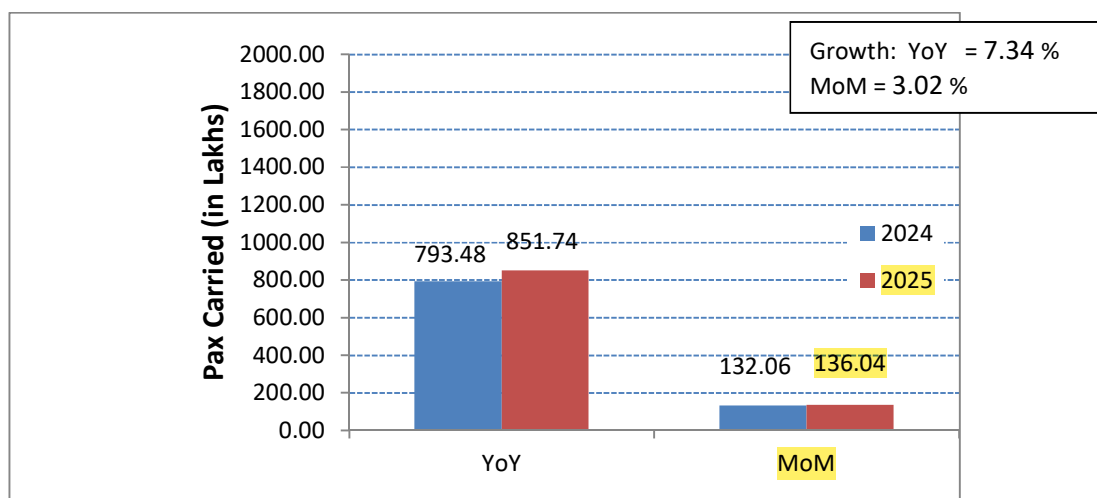


Subject: Performance of domestic airlines for the year 2025.

Traffic data submitted by various domestic airlines has been analysed for the month of June 2025.

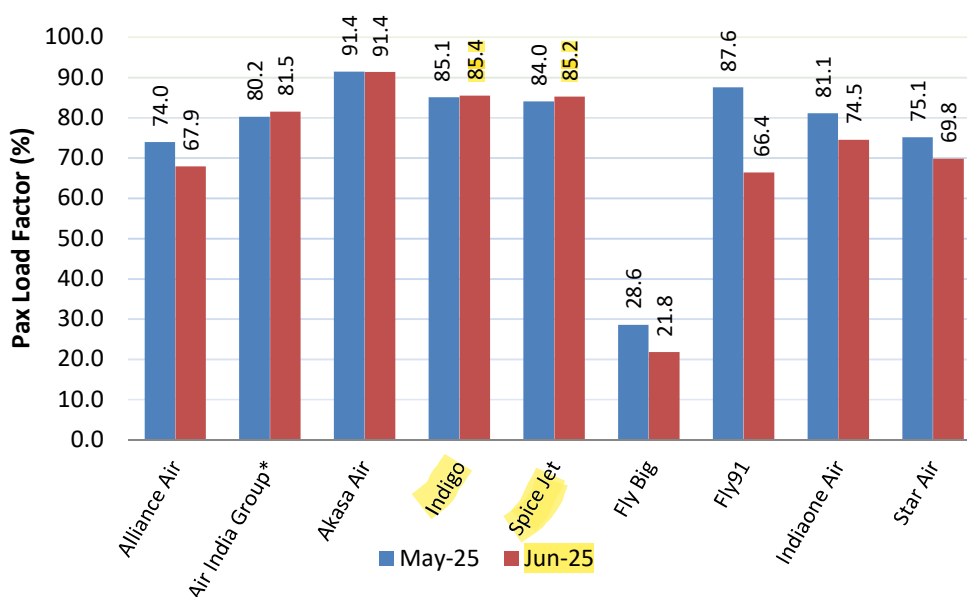
Passenger Growth

Passengers carried by domestic airlines during January-June 2025 were **851.74 lakhs** as against **793.48 lakhs** during the corresponding period of the previous year thereby registering an annual growth of **7.34 %** and monthly growth of **3.02 %**.



Passenger Load Factor

The passenger load factors of various scheduled domestic airlines in June 2025 are as follows (Ref Table 1):

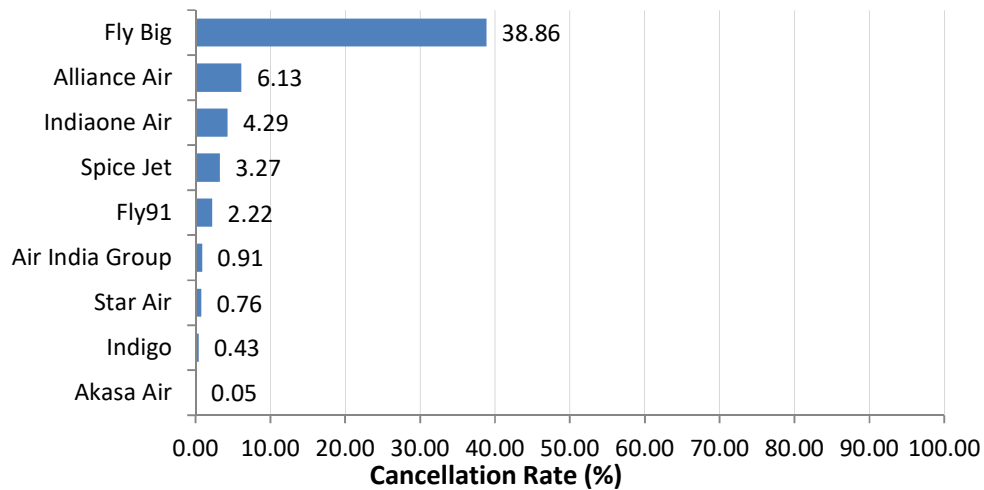


* Air India Group includes Air India & Air India Express.

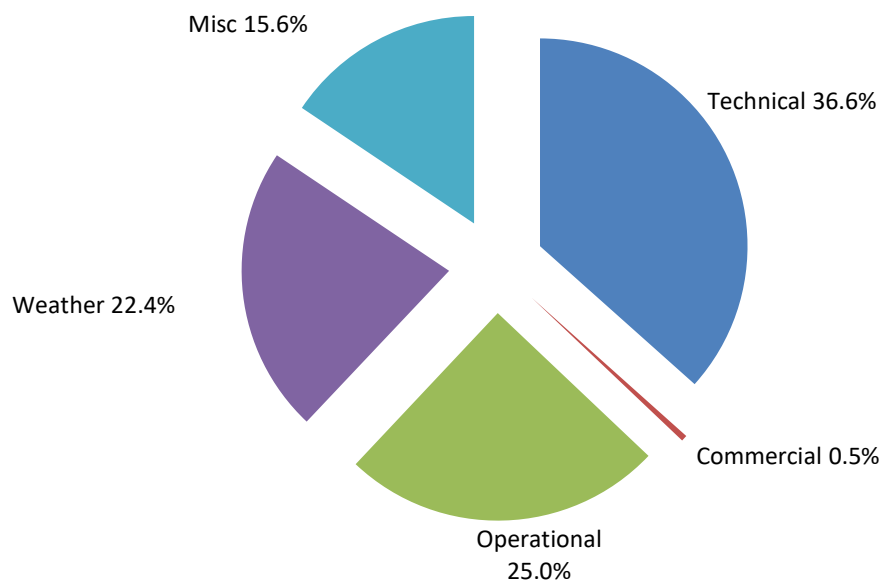
The Traffic report is being prepared based on information received from scheduled domestic airlines.

Cancellations

The overall cancellation rate of scheduled domestic airlines for the month of June 2025 has been 0.93 %. Airline-wise details of cancellations are as follows:



Various reasons of cancellations are indicated below:



The Traffic report is being prepared based on information received from scheduled domestic airlines.

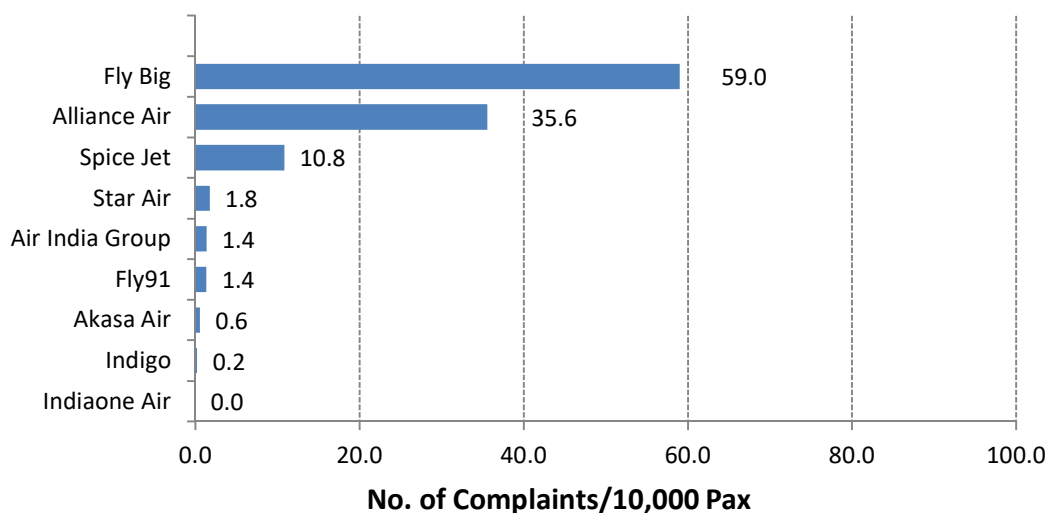
MARKET SHARE OF SCHEDULED DOMESTIC AIRLINES (YEAR 2025)

Month		Passengers Carried (in Lakhs)/Market Share (%)								
		Alliance Air	Air India Group	Akasa Air	Indigo	Spice Jet	Fly Big	Fly91	Indiaone Air	Star Air
Jan	Pax Carried	0.91	37.58	6.87	95.22	4.66	0.01	0.21	0.03	0.63
	Market Share	0.6	25.7	4.7	65.2	3.2	0.0	0.1	0.0	0.4
Feb	Pax Carried	0.86	38.30	6.59	89.40	4.54	0.01	0.12	0.03	0.60
	Market Share	0.6	27.3	4.7	63.7	3.2	0.0	0.1	0.0	0.4
Mar	Pax Carried	0.78	38.78	7.20	93.09	4.80	0.01	0.12	0.03	0.61
	Market Share	0.5	26.7	5.0	64.0	3.3	0.0	0.1	0.0	0.4
IstQtr	Pax Carried	2.55	114.66	20.66	277.71	13.99	0.03	0.45	0.09	1.84
	Market Share	0.6	26.5	4.8	64.3	3.2	0.0	0.1	0.0	0.4
Apr	Pax Carried	0.76	38.90	7.13	91.72	3.79	0.01	0.20	0.03	0.62
	Market Share	0.5	27.2	5.0	64.1	2.6	0.0	0.1	0.0	0.4
May	Pax Carried	0.62	37.22	7.48	90.80	3.40	0.02	0.24	0.03	0.75
	Market Share	0.4	26.5	5.3	64.6	2.4	0.0	0.2	0.0	0.5
Jun	Pax Carried	0.66	36.92	7.22	87.74	2.61	0.01	0.22	0.03	0.63
	Market Share	0.5	27.1	5.3	64.5	1.9	0.0	0.2	0.0	0.5
IIIndQtr	Pax Carried	2.04	113.04	21.83	270.25	9.80	0.04	0.67	0.09	2.00
	Market Share	0.5	26.9	5.2	64.4	2.3	0.0	0.2	0.0	0.5
Jul	Pax Carried									
	Market Share									
Aug	Pax Carried									
	Market Share									
Sep	Pax Carried									
	Market Share									
IIIrdQtr	Pax Carried									
	Market Share									
Oct	Pax Carried									
	Market Share									
Nov	Pax Carried									
	Market Share									
Dec	Pax Carried									
	Market Share									
IVthQtr	Pax Carried									
	Market Share									
TOTAL	Pax Carried	4.59	227.71	42.50	547.96	23.79	0.07	1.12	0.17	3.83
	Market Share	0.5	26.7	5.0	64.3	2.8	0.0	0.1	0.0	0.5

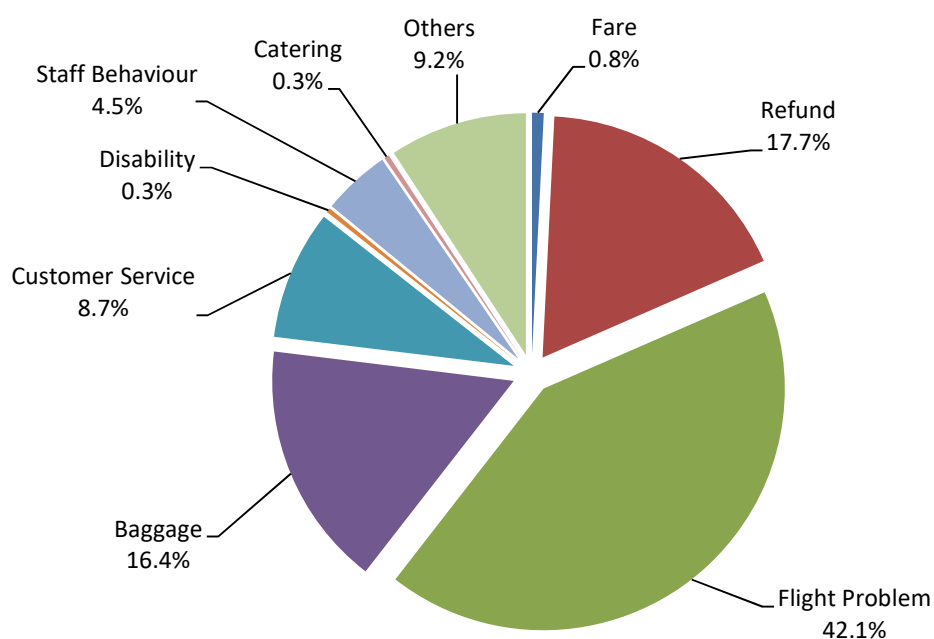
The Traffic report is being prepared based on information received from scheduled domestic airlines.

Passenger Complaints during the month

During June 2025, a total of 1279 passenger-related complaints had been received by the scheduled domestic airlines. The number of complaints per 10,000 passengers carried for the month of June 2025 has been around 0.94. The airline-wise details are as follows:



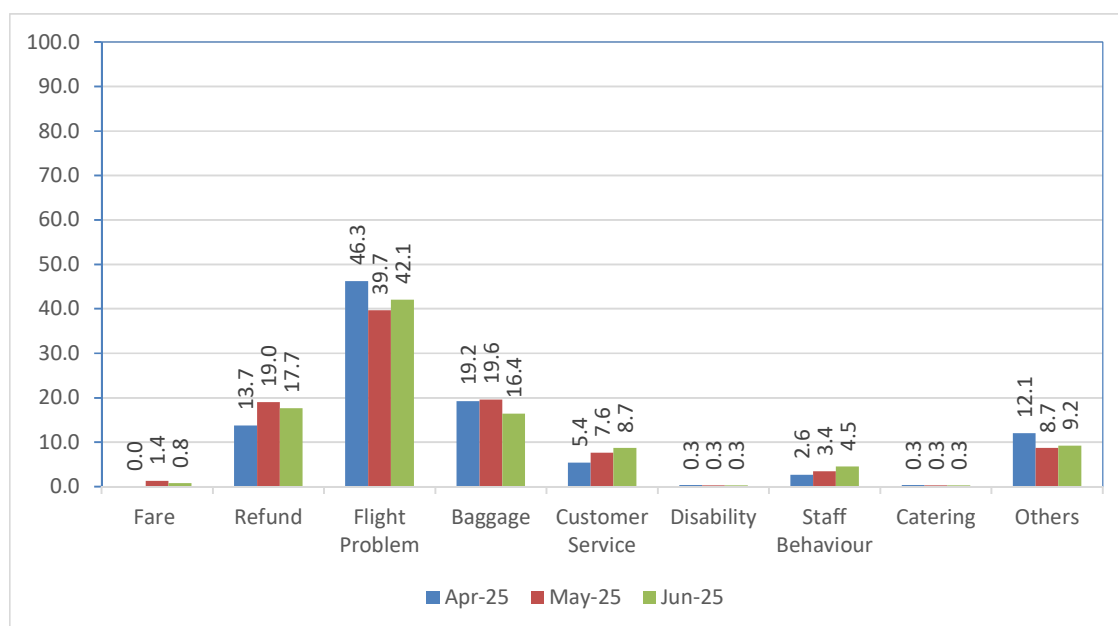
Various reasons of passenger complaints are indicated below:



Note –The major reasons for complaints is flight problem. Airlines have received a total of 1279 complaints, out of which 1278 (99.9 %) have been addressed.

The Traffic report is being prepared based on information received from scheduled domestic airlines.

The reason for complaint as percentage compared to the previous month is as follows:



Airline-wise status of redressal of complaints is given at Table – 2.

Compliance of Route Dispersal Guidelines

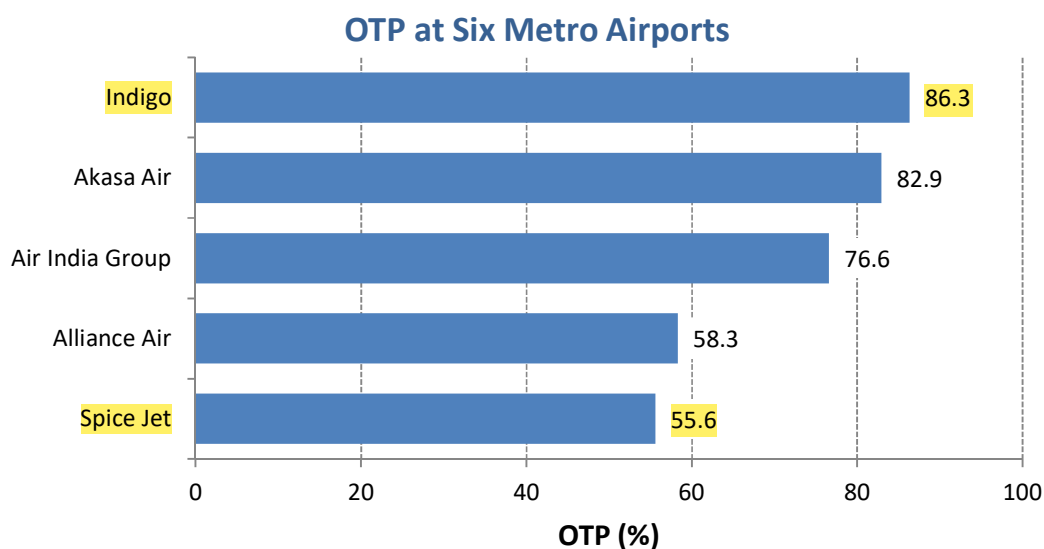
Airline-wise Compliance of Route Dispersal Guidelines during the month of June 2025 is given in the following table.

Airline	ASKM Deployment (%) of Category I		
	Cat III	Cat IIA	Cat II
Alliance Air	19494.7	3780.30	9333.6
Air India Group	105.3	1.32	35.1
Akasa Air	70.5	1.02	47.5
Indigo	200.0	1.15	44.3
SpiceJet	118.5	2.07	105.4
Minimum Capacity Requirement in accordance with RDG (As % of Capacity Deployed in Category I)			
<ul style="list-style-type: none"> Category II - 10% Category IIA - 1% Category III - 35% 			

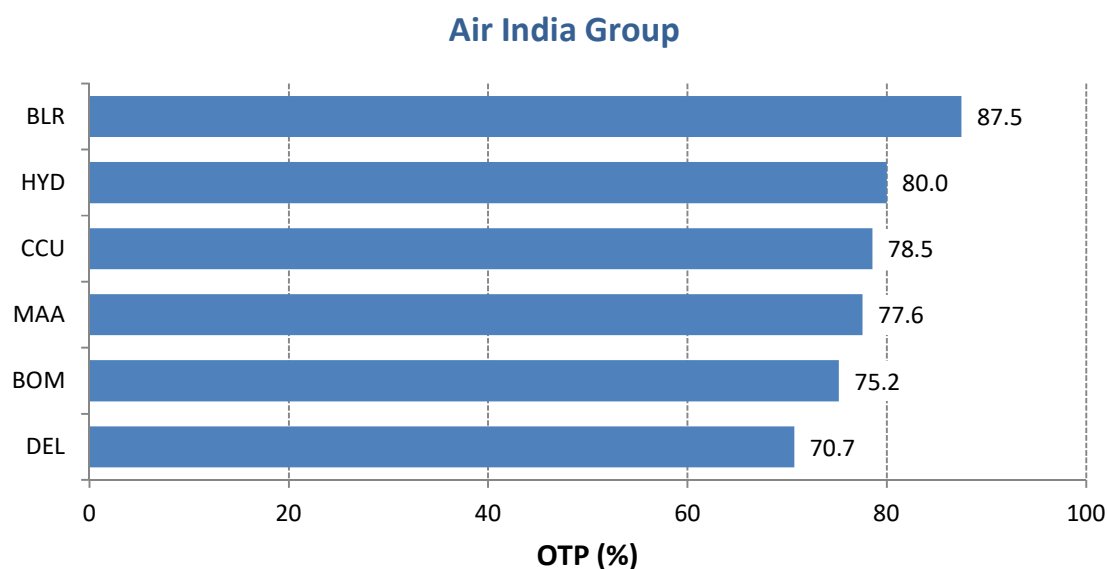
The Traffic report is being prepared based on information received from scheduled domestic airlines.

On-Time Performance (Scheduled Domestic Airlines)

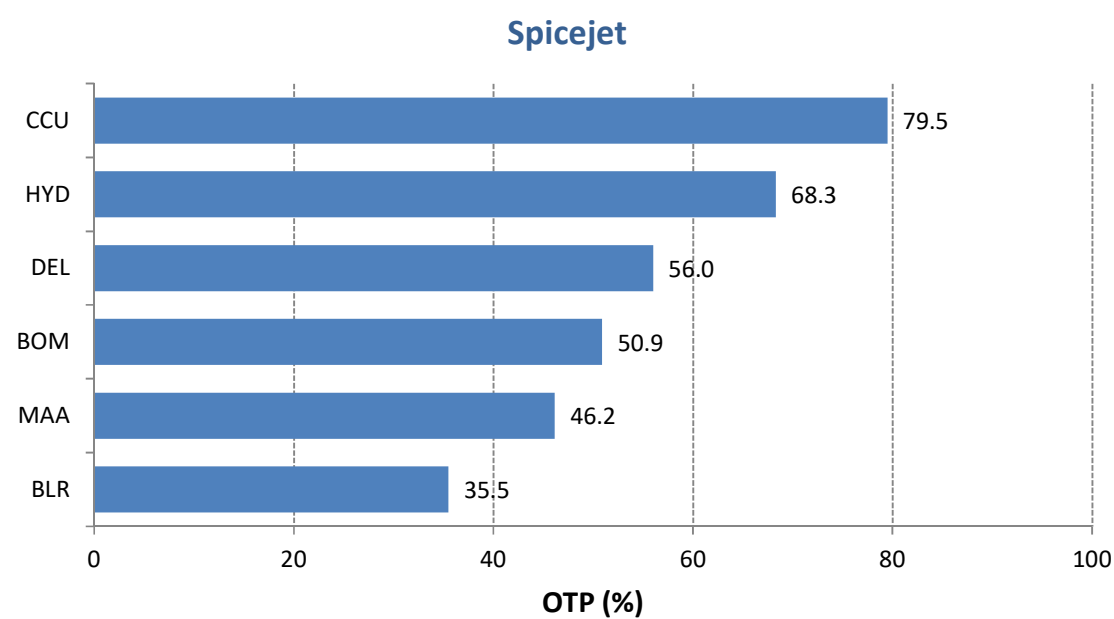
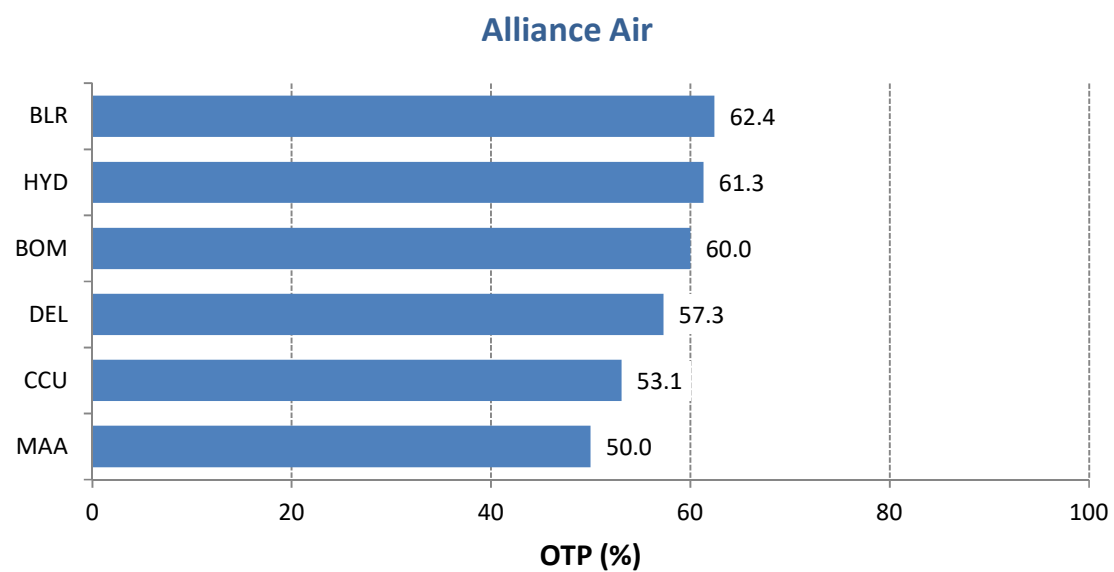
On-Time Performance (OTP) of scheduled domestic airlines has been computed for six metro airports viz. Bangalore, Delhi, Hyderabad, Mumbai, Chennai, and Kolkata. Airline-wise OTP at six metro airports for the month of June 2025 is as follows:



Airport-wise On-Time Performance of scheduled domestic airlines complying with Route Dispersal Guidelines is as follows:

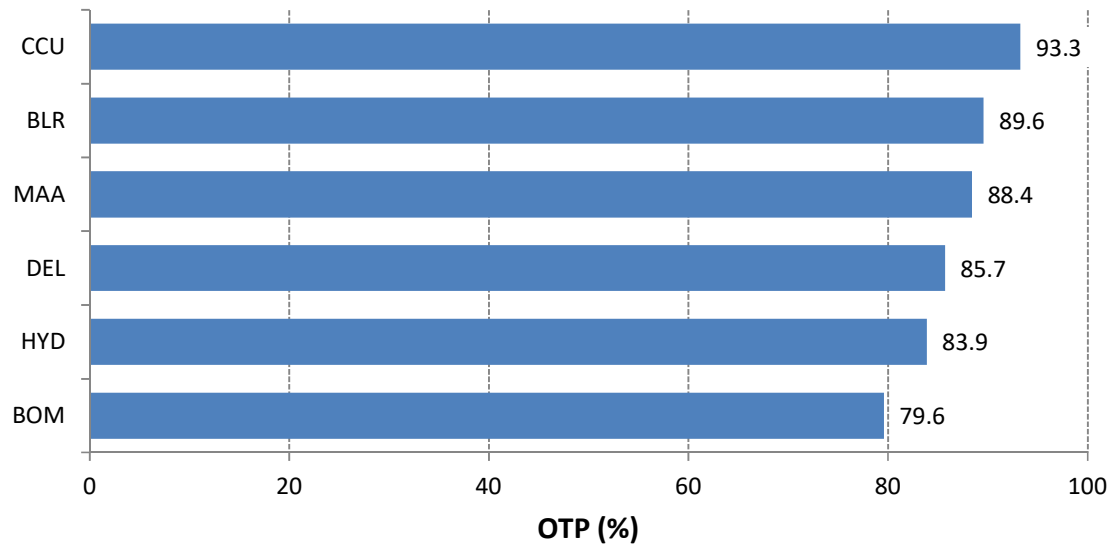


The Traffic report is being prepared based on information received from scheduled domestic airlines.

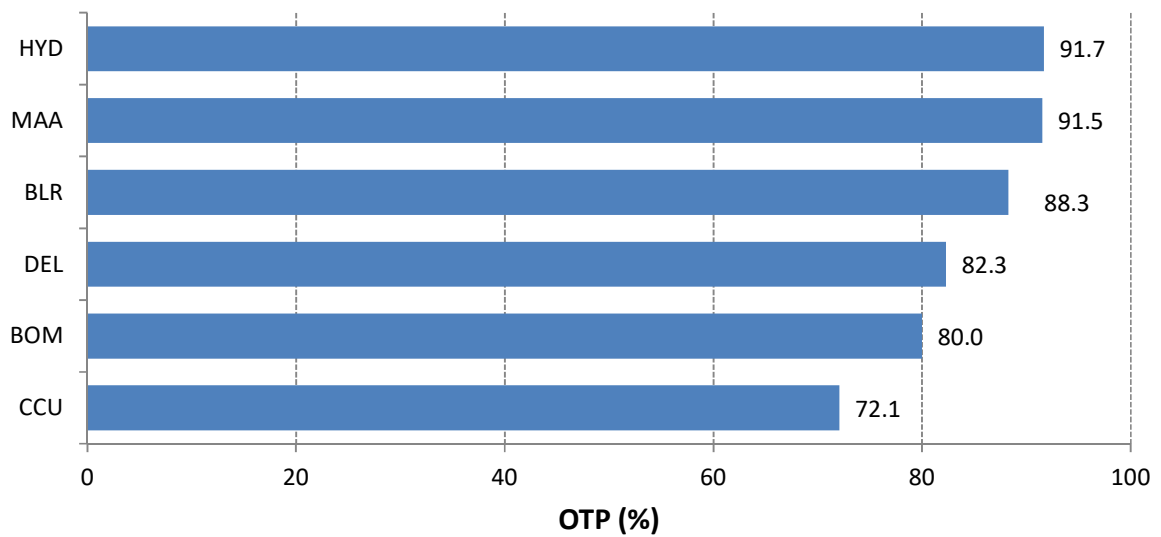


The Traffic report is being prepared based on information received from scheduled domestic airlines.

IndiGo

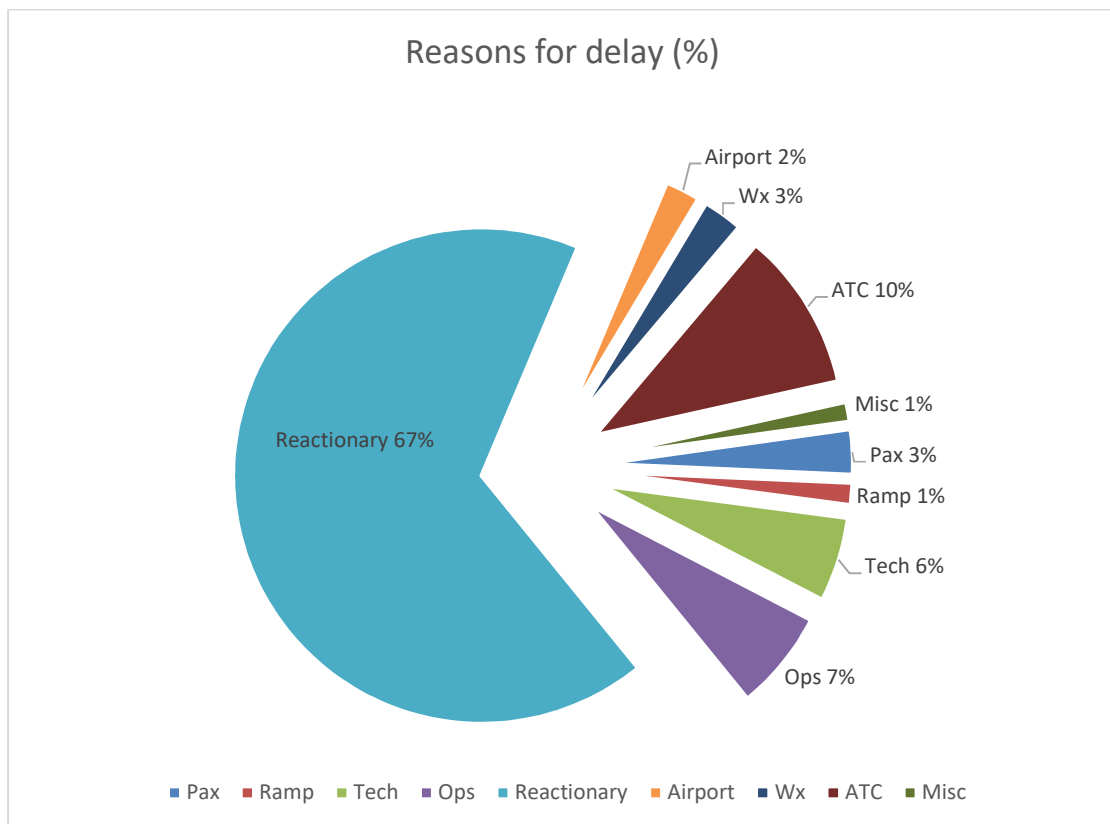


Akasa Air



The Traffic report is being prepared based on information received from scheduled domestic airlines.

Reasons for delay have been analysed, which are presented below. It has been found that the majority of delays have been attributed to 'Reactionary'.

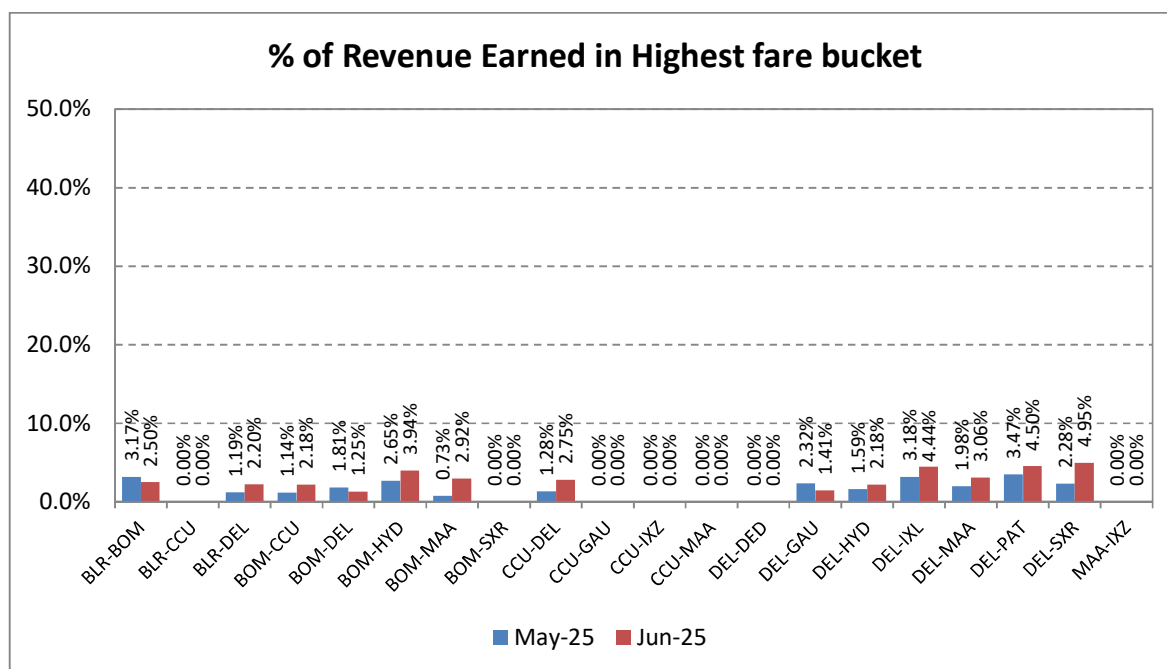
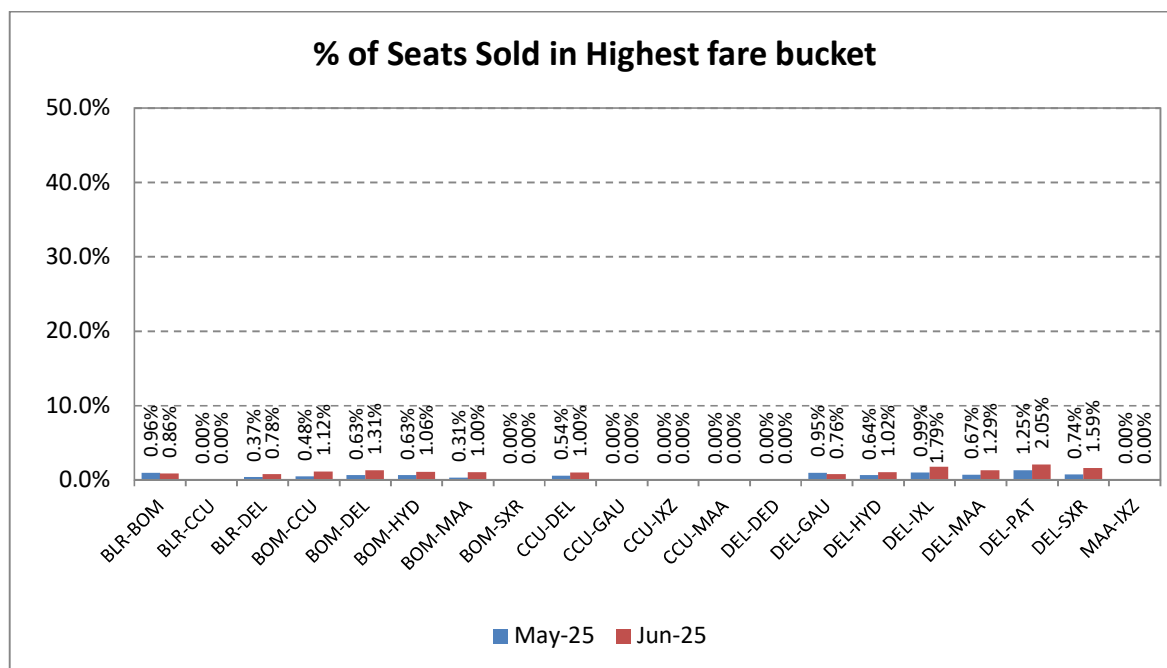


The Traffic report is being prepared based on information received from scheduled domestic airlines.

Revenue Earned & Seats Sold in Highest Fare Bucket

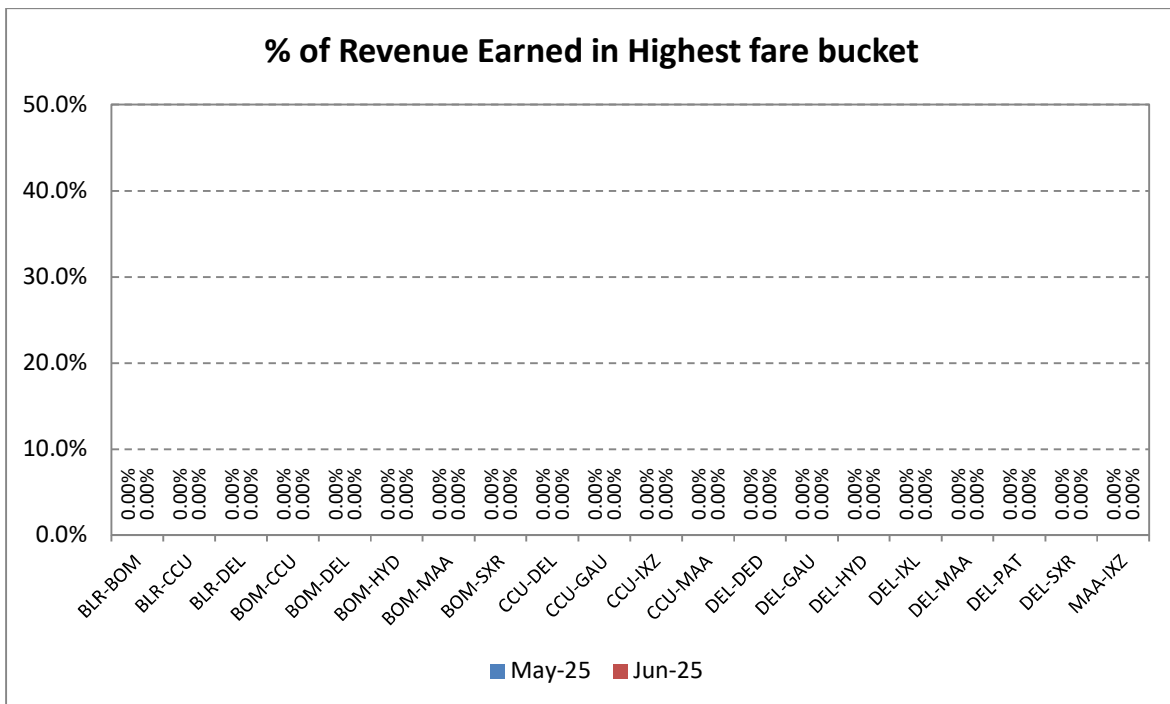
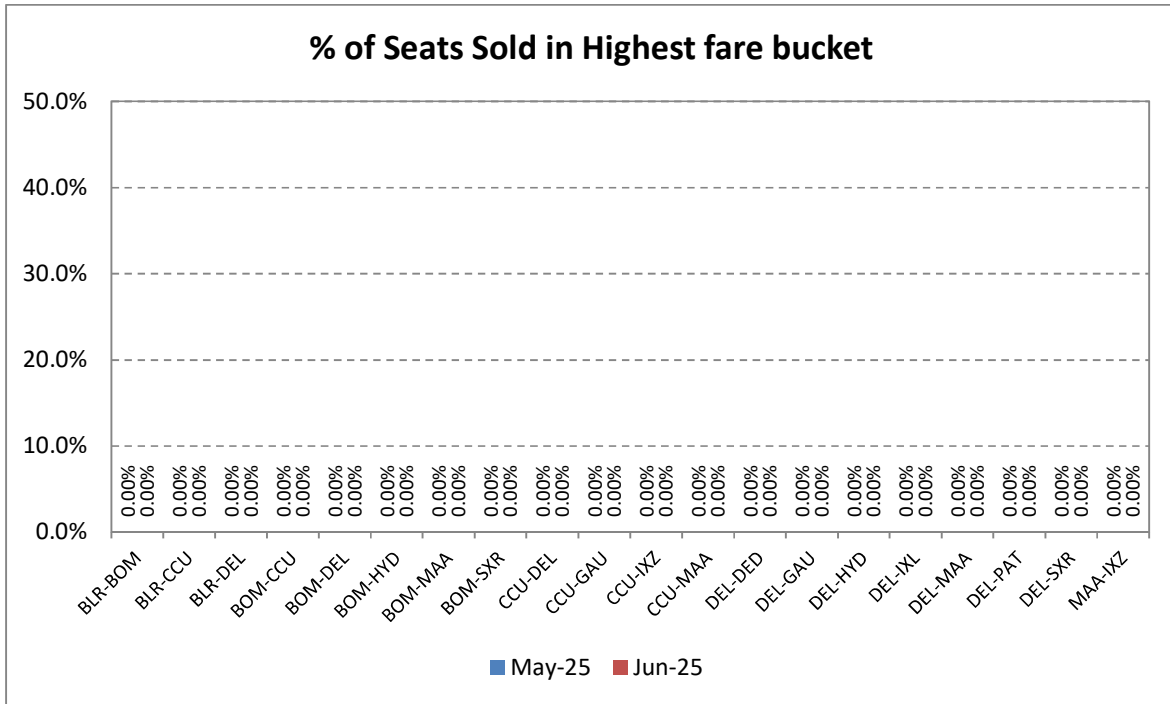
The revenue earned and the number of seats sold by scheduled airlines in the highest fare bucket on selected 20 sectors is as follows:

Air India Group



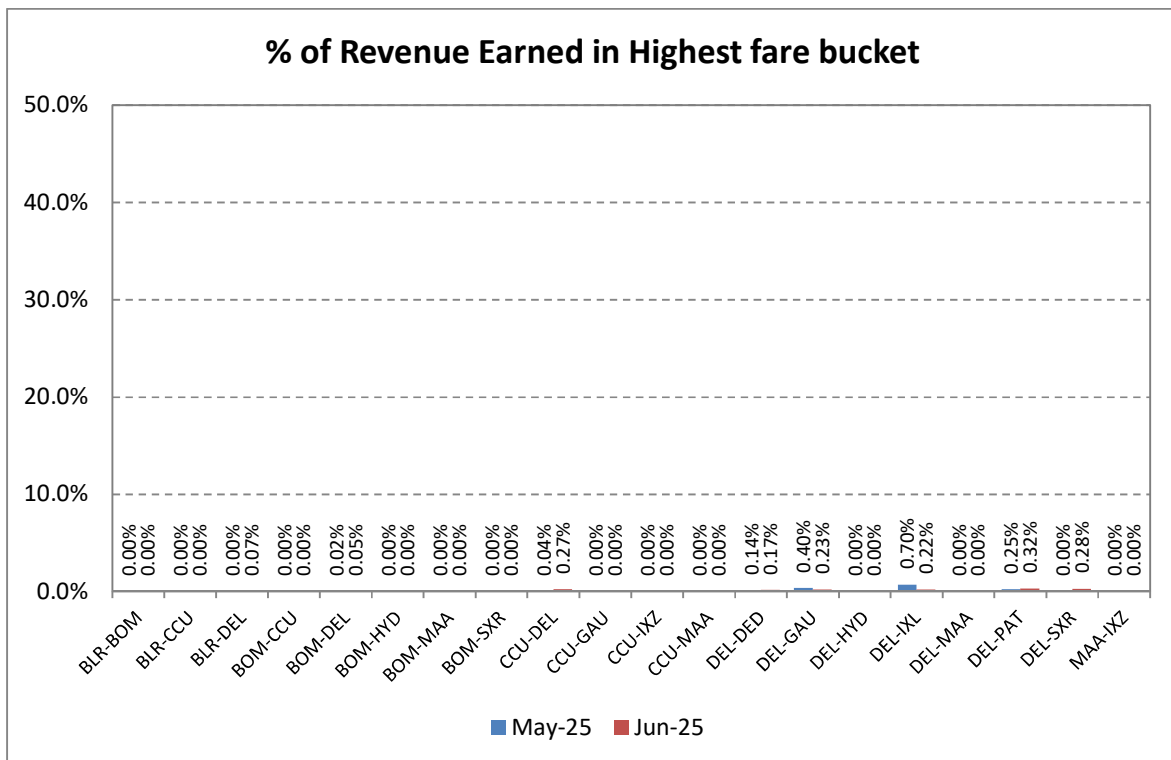
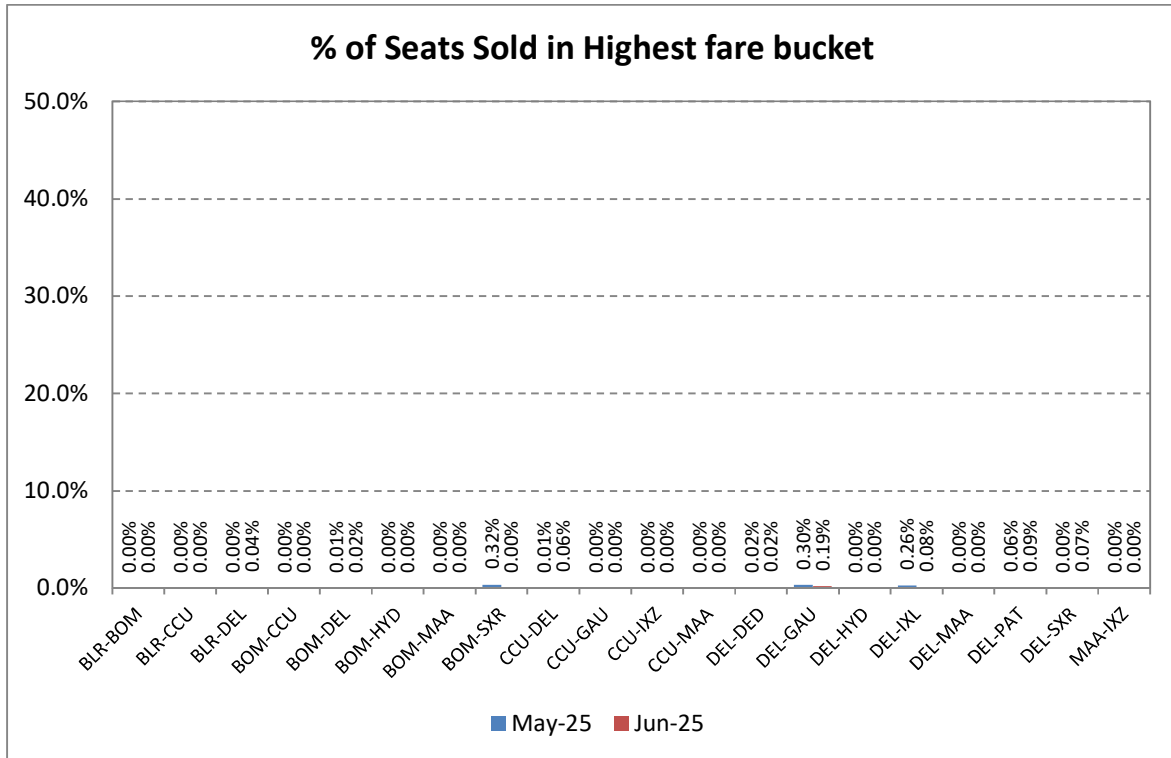
The Traffic report is being prepared based on information received from scheduled domestic airlines.

Indigo



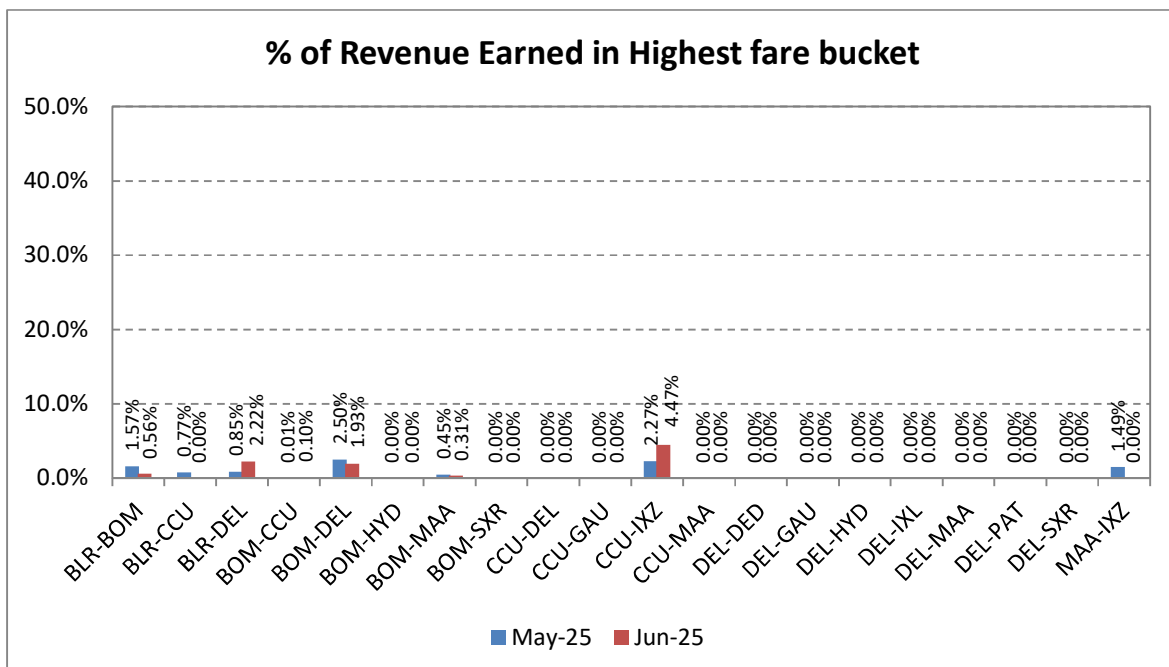
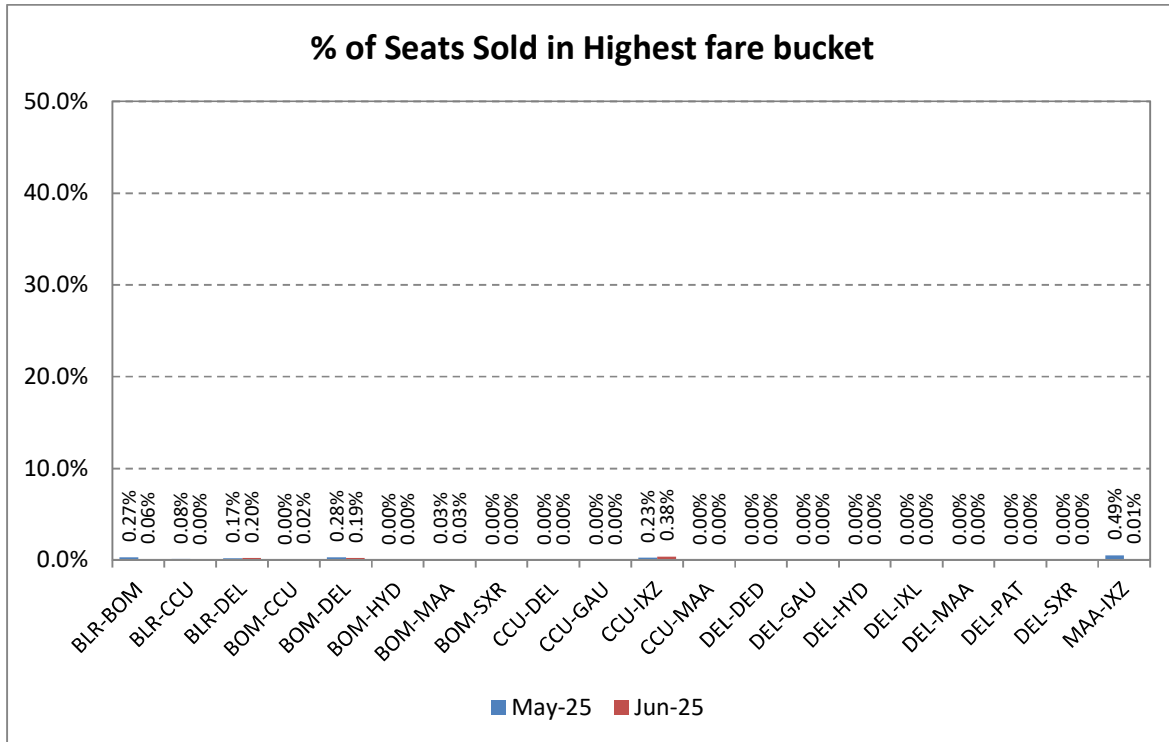
The Traffic report is being prepared based on information received from scheduled domestic airlines.

Spicejet



The Traffic report is being prepared based on information received from scheduled domestic airlines.

Akasa Air



The Traffic report is being prepared based on information received from scheduled domestic airlines.

Compliance of CAR Section 3, Series M, Part IV

In accordance with the Civil Aviation Requirement Section 3, Series M, Part IV, airline are required to submit data on number of cases of denied boarding, cancellations and delays along with the status on a monthly basis.

Airline	Denied Boarding		Cancellations		Delays Beyond 2 Hrs	
	No. of Pax Affected	Status of Facilities & Compensation	No. of Pax Affected	Status of Facilities & Compensation	No. of Pax Affected	Status of Facilities
Alliance Air	NIL	NIL	8919	<ul style="list-style-type: none"> Refund/ Rebooking Amount spent on facilitation of Rs.0.30 lakhs. 	1966	<ul style="list-style-type: none"> Refreshments Refund/Rebooking Amount spent on facilitation of Rs.1.60 lakhs
Air India Group	903	<ul style="list-style-type: none"> Alternate flights Accommodation Refreshments/ Meals Rs.92.08 Lakhs spends on facilitation/ compensation. 	6761	<ul style="list-style-type: none"> Refreshments Accommodation Moved to alternate flights Refund Amount spent on facilitation of Rs.36.68 lakhs 	74815	<ul style="list-style-type: none"> Refreshments/Lunch Transfer to OAL Amount spent on facilitation of Rs.104.89 lakhs
Akasa Air	17	<ul style="list-style-type: none"> Alternate flight Rs.1.82Lakhs spends on facilitation/ compensation. 	784	<ul style="list-style-type: none"> Full Refund Amount spent on facilitation of Rs.15.82 lakhs 	5080	<ul style="list-style-type: none"> Refreshments Amount spent on facilitation of Rs 9.84 lakhs
Indigo	65	<ul style="list-style-type: none"> Alternate flight and travel vouchers Rs.5.44 Lakhs spends on facilitation/ compensation. 	10751	<ul style="list-style-type: none"> Alternate flights 	11822	<ul style="list-style-type: none"> Refreshments
SpiceJet	37	<ul style="list-style-type: none"> Alternate SG flights Rs.0.22 Lakhs spends on facilitation/ compensation. 	5198	<ul style="list-style-type: none"> Refreshments Accommodation Alternate SG flights Amount spent on facilitation of Rs 16.91 lakhs 	24447	<ul style="list-style-type: none"> Refreshments. Alternate SG flights Amount spent on facilitation of Rs 51.59 lakhs
Fly Big	NIL	NIL	287	<ul style="list-style-type: none"> Alternate Flight Refund 	NIL	NIL
Fly91	NIL	NIL	75	<ul style="list-style-type: none"> Refreshments Accommodation Transport Amount spent on facilitation of Rs 1.17 lakhs 	468	<ul style="list-style-type: none"> Refreshments. Amount spent on facilitation of Rs 0.90 lakhs
Indiaone Air	NIL	NIL	58	<ul style="list-style-type: none"> Refund/ Reschedule Amount spent on facilitation of Rs 1.51 lakhs 	NIL	NIL
Star Air	NIL	NIL	500	<ul style="list-style-type: none"> Refund/Re-accommodation 	1425	<ul style="list-style-type: none"> Refund/ Re-accommodation

The Traffic report is being prepared based on information received from scheduled domestic airlines.

SUMMARY

Denied Boarding		Cancellations		Delays	
No. of Pax Affected	Facilities & Compensation	No. of Pax Affected	Facilities & Compensation	No. of Pax Affected	Facilities
1022	Rs 99.57 lakhs compensation and facilities	33333	Rs. 72.40 lakhs compensation and facilities	120023	Rs. 168.82 lakhs towards facilitation

The Traffic report is being prepared based on information received from scheduled domestic airlines.

Table 1

MONTH-WISE SEAT FACTOR OF SCHEDULED OPERATORS IN 2025
(PASSENGER LOAD FACTOR IN PERCENTAGE)

Month	Alliance Air	Air India Group	Akasa Air	Indigo	Spice Jet	Fly Big	Fly91	Indiaone Air	Star Air
Jan	77.6	84.4	93.7	89.8	87.1	22.7	82.0	80.9	79.6
Feb	83.0	87.2	95.1	91.7	91.2	27.2	82.9	82.8	83.1
Mar	75.9	80.6	92.5	84.6	84.8	26.4	76.4	82.0	73.8
Apr	75.8	83.3	93.0	86.9	86.0	30.2	82.6	81.3	79.7
May	74.0	80.2	91.4	85.1	84.0	28.6	87.6	81.1	75.1
Jun	67.9	81.5	91.4	85.4	85.2	21.8	66.4	74.5	69.8
Jul									
Aug									
Sep									
Oct									
Nov									
Dec									

The Traffic report is being prepared based on information received from scheduled domestic airlines.

Table 2

Airline	Complaints		Redressal Status	
	Total	Per 10,000 Passengers Carried	Closed	Open
Alliance Air	236	35.6	236	0
Air India Group	508	1.4	508	0
Akasa Air	41	0.6	41	0
Indigo	190	0.2	190	0
Spice Jet	283	10.8	283	0
Fly Big	7	59.0	6	1
Fly91	3	1.4	3	0
Indiaone Air	0	0.0	0	0
Star Air	11	1.8	11	0
Total	1279	0.94	1278	1

The Traffic report is being prepared based on information received from scheduled domestic airlines.