



Ref. No.: SIL/CHD/2025-26/02082025

Date: August 02, 2025

To,

The Manager
Listing Department
BSE Limited (BSE)
Corporate Relation Department
Phiroze Jeejeebhoy Towers, 25th Floor
Dalal Street, Mumbai – 400001

The Manager
Listing Department
National Stock Exchange of India Ltd (NSE)
Exchange Plaza, C-1 Block G, Bandra Kurla
Complex, Bandra, Mumbai – 400051

BSE Scrip Code: 526951

Trading Symbol : STYLAMIND

Subject: Disclosure under Regulation 30 of the SEBI (Listing Obligations and Disclosure Requirements) Regulations, 2015.

Dear Sir/Madam,

Pursuant to Regulation 30 of the SEBI (Listing Obligations and Disclosure Requirements) Regulations, 2015, we are enclosing herewith a copy of the Investor Presentation on Unaudited Financial Results of the Company for the First Quarter (Q1) ended June 30, 2025.

You are requested to kindly take the aforesaid information on record.

Thanking you,

Yours sincerely,

For **Stylam Industries Limited**

Dhiraj Kheriwal
Company Secretary & Compliance Officer

Encl: As above

Stylam Industries Limited

Regd. Office: SCO 14, Sector 7C, Madhya Marg, Chandigarh (INDIA)-160019, **T:**+91-172-5021555/5021666, **F:** +91-172-5021495

Works I: Plot No. 192-193, Industrial Area Phase-1, Panchkula (Haryana) INDIA - 134109, **T:**+91-172-2563907/2565387

Works II: Village Manak Tabra towards Raipur Rani, Mattewala Chowk, Distt. Panchkula (Haryana)

W: www.stylam.com, **CIN:** L20211CH1991PLC011732 (Govt. of India recognised Star Export House)

Investor Presentation
June 2025

Precision Performance Possibility



Table of Contents

Company Overview

Key milestones

Vision and Mission

Stylam's Footprint

Awards and certifications

Product Portfolio

Stylam Supremacy

Manufacturing Infrastructure

Quality Control

Social Compliance

Future Outlook

Financial Performance

Marketing Initiatives

Takeaway



Legacy of **excellence.** Innovating for a brighter **tomorrow.**

As we move forward, the vision is clear — to shape a world where every surface speaks of quality, creativity, and durability. We invite you to be part of this evolving story, as we continue to build the future of surface design, together.

A **34+ year journey** is more than just a number — it's a story of vision, innovation, resilience, and constant evolution. From our humble beginnings in 1991 to becoming a globally recognized name in the laminates and surface solutions industry,

we, at Stylam Industries, have redefined spaces with world-class surface products, earning the trust of architects, designers, and consumers across the globe.

Stylam has embraced change by pioneering high-pressure laminates, compact panels, acrylic solid surfaces, and modern exterior cladding solutions. The company prioritizes sustainability, design innovation, and quality, expanding its reach to over 80 countries while delivering value through advanced technology and eco-friendly manufacturing with a customer-first approach.



Stylam Laminates.

Used across generations.

Lasts for *generations*.

Trusted by

Generations

Stylam Industries' remarkable journey in the global surface solutions industry is built on a foundation of trust nurtured with its stakeholders over decades.

This enduring trust stands at the core of Stylam's success, empowering strong collaborations and driving sustained growth and leadership.



The Legacy of Trust

**we have cultivated
among our stakeholders
over the years has
fueled Stylam
Industries' journey
in the global surface
solutions industry.**

This trust has led us to continuously innovate, set benchmarks, create new categories, and lead segments — reflected in our strong relationships with architects, designers, dealers, and partners, many of whom have been with us for decades.

It empowers us to introduce surface solutions that define modern infrastructure and inspire spaces across the globe, while attracting, nurturing, and retaining top talent that drives our vision forward.

This trust has helped us scale our capacity with state-of-the-art manufacturing facilities and bigger laminate plants, propelling our growth beyond national borders and establishing our leadership in over 80 countries worldwide.

It has forged long-term collaborations with global brands and partners, built on mutual excellence, and driven our investments in technology, design innovation, and sustainability initiatives.

Above all, this trust has allowed us to consistently deliver value and strong returns to our shareholders, year after year.

A legacy of trust translating into sustained leadership

- 👍 One of the top three laminate brands in India.
- 👍 Introduced the world's first hot coating press machine.
- 👍 First ever Indian Manufacturer to introduce HPL Exterior Cladding
- 👍 We use a unique press with a capacity of 28 daylight, measuring 1860x4320 mm.



Stepping In. Standing Out. Leading On.

Having established ourselves in the industrial and commercial surfaces segment, we ventured boldly into decorative laminates in the early 1990s.

It wasn't always smooth sailing — but through fierce competition and early challenges, we found our footing with relentless product innovation and design excellence.

We were pioneers in introducing new textures, finishes, and large-format laminates that changed how spaces were envisioned.

Taking the First Step

We launched our first premium laminate collections, blending aesthetics with performance, and leveraging new opportunities in the interiors segment. This helped Stylam gain strong traction, but we knew leadership required more.

Our team tackled two key questions:

- Why should customers and designers prefer our surfaces?
- How could we make our offerings indispensable in their projects?

Our strategy was clear:

— Leverage cutting-edge manufacturing and design innovation to create surfaces that were not just beautiful, But solved real-world problems in application, durability, and maintenance.

Simultaneously, we built a strong network of dealers and architects across India and global markets.

The Game Changer

In 2012, Stylam transformed the industry again with the launch of our new laminate manufacturing plant, featuring fully automated, state-of-the-art technology. This plant empowered us to produce a wider range of products — including super mattes, high gloss, anti-fingerprint laminates, and customized solutions for diverse needs.

We solved the industry's long-standing pain points:

longer delivery times,
limited customization, and
inconsistent quality.

By investing in technology and design R&D, we ensured our partners had access to trend-setting, **reliable products faster and at scale.**

Within a few years, we expanded into over 80+ countries, supported by aggressive sales strategies and a relentless commitment to quality and innovation.



Around the World. Today and Tomorrow.

Our journey of success is built on milestones. Celebrate our past, embrace the present, and envision our future.



Small Steps,
Big Impact.

Core Vision

To be a Global Leader in every area of our work by delivering aesthetically pleasing and durable solutions that provide long-lasting value.



Core Mission

We are a global family with a proud Indian heritage, dedicated to providing innovative and aesthetically-driven building material solutions that emphasize durability and excellence worldwide.





Product Portfolio



Stylam laminates have set benchmarks in the past because of the unique design range and consistently high quality.



FASCIA brings a unique façade system, manufactured using special quality resins, providing effective weather protection.



Modular restroom and locker cubicle systems. It has been crafted with the finest materials and highest quality of fixtures and fittings.



It is an extremely versatile product - tough, durable, non-porous and repairable, that can be customized to integrate seamlessly.



It blends royalty and modernity in innovative interior and exterior designs, providing high-quality, durable, and artistic products through advanced manufacturing techniques.



Anti-Fingerprint Laminates are designed for demanding interior applications, utilizing unique manufacturing technology to make finger marks nearly invisible.



High Gloss Laminates are made using advanced German technology, ensuring long-lasting brilliance without wear over the years.



Stylam presents STELLA TILES, a lightweight and durable architectural material that offers beauty, versatility, and resistance, enhancing projects with decorative and sophisticated designs.



Product Portfolio

UNICORE LAMINATES

What distinguishes UNICORE is the uniformity of color between its decorative surface and the core layers.

DiGi *delight* DIGITAL LAMINATES

Digital laminates provide high-quality options with customizable designs, catering to diverse consumer needs and enhancing creative possibilities.

SYNCHRO LAMINATES

Stylam Synchro Laminates authentically replicate the texture of wood and offer an elegant, natural appearance, all while encompassing the benefits inherent to laminate materials.

PLUSGUARD LabMATE **CHEMICAL RESISTANT LAMINATES**

Plus Guard Stylam Laminate offers an exceptionally durable surface suitable for laboratory conditions, featuring superior abrasion and scratch resistance.

POST FORMING LAMINATES

Post Forming Laminates enhance the decorative property of the edges of any regular laminate by ensuring no seams around the corners and a smooth, evenly laminated surface.

MAGNETIC LAMINATES

Magnetic Laminates have a strong magnetic effect and can be written on with chalks or special board markers. They are ideal for a wide variety of applications.

MIRROR SHIELD LAMINATES

Mirror laminates are considered ideal for adding flair to light duty, horizontal or vertical applications. They can be used on walls, furniture, retail fixtures, signages, exhibits and display areas.

SMART BOARD WHITE CHALK BOARD

Chalkboard laminate serves as an ideal solution for any environment or application requiring a durable and cost-effective writing surface.



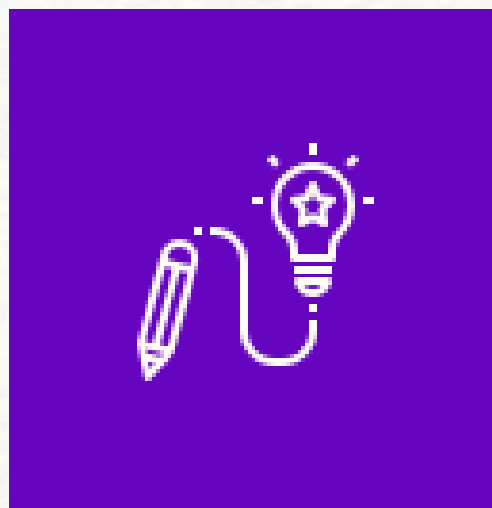
Why Stylam

Leads The Way

At Stylam, excellence is not just a goal—it's a commitment. Our strengths across innovation, manufacturing, service, and partnerships drive the success of every project we touch

Design and Innovation

Leading in design trends and technological advancements.



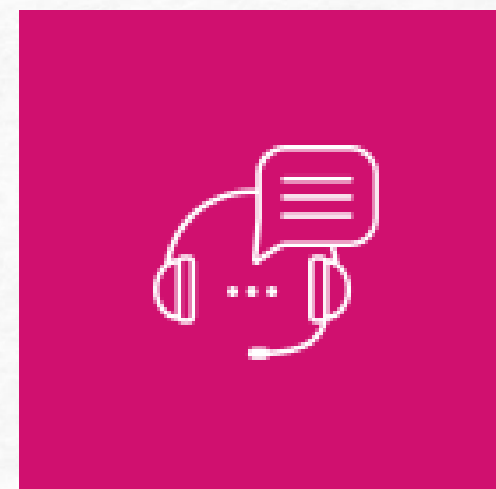
Proudly Made in India

Supporting local industry with high-quality Indian manufacturing.



Robust Post-Sales Service

Dedicated professional team ensuring efficient support.



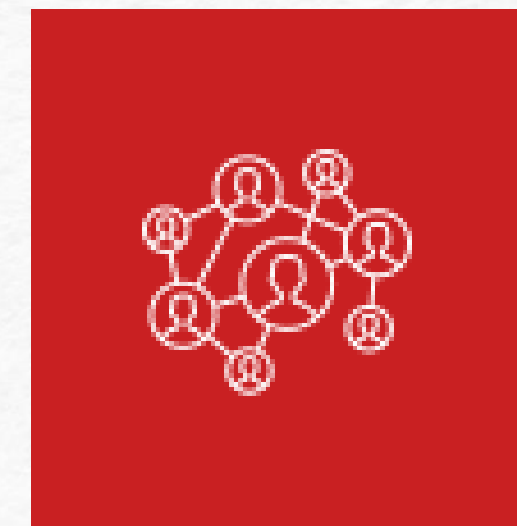
Robust Supply Chain

Our supply chain has 7 RDCs in India, boosting supply capabilities and customer service.



Strong Partner Network

Extensive reach through channel partners and industry influencers.





Leading

Laminate Manufacturing
Company in India

34+ Years

Rich Legacy

1000+ Employees

Strong Workforce Driving
Success

Largest

One of the Largest
Laminate facility in
India

Capacity Expansion

Achieved 74% utilization in
the laminates division.

A + Stable

Care

Our Legacy of **Innovation & Excellence**

- Stylam operates one of the largest single location laminate manufacturing plants in Asia, spread across 80 acres having an annual capacity of 16 million sheets.
- We are a Global Pioneer for the 'Hot Coating Process' of PU+ Lacquer coating on thin laminates. This one-of-a-kind Hot Coating Process machine is made with a patented technology by KLEIBERIT and BARBERAN.
- We are also a Pioneer in India for Solid Acrylic Surfaces, setting up the first production line to manufacture these products in India.
- We had received a Certification from NSF International, USA for our Solid Acrylic Surface products.
- Over 2,500 Team mates devote themselves to Stylam and its vision with a smile daily.
- Stylam is setting up a new plant for the manufacturing of laminate sheet adjoining to its existing plant in Manak Tabra , Panchkula Haryana.





Capacity Utilization & Expansion

- Annual production of approximately 20 million laminate sheets.
- Equipped with the largest single press (28 daylight) measuring 1860 × 4320 mm.
- Hot Coating Press production capacity: 1 million sheets per year.
- Acrylic Solid Surface production capacity: 300,000 panels annually.

Stylam Industries is strengthening its leadership with the expansion of a new manufacturing facility in Panchkula, Haryana.

This marks our third laminate plant, strategically located next to our existing facility at Manak Tabra.

The groundwork for the new plant is underway, enhancing our ability to meet rising global demand with greater speed and scale.

NEW SIZES

2440x1220mm, 2465x1245mm,
2800x1300mm, 3050x1300mm,
3100x1325mm

3660x1400mm, 3660x1600mm,
3660x1900mm, 4320x1400mm,
4320x1600mm, 4320x1900mm

2800x1860mm, 2800x2260mm,
3050x1550mm, 3050x1570mm,
3050x1860mm, 3100x1550mm,
3100x1570mm, 3100x2200mm

Certifications & Accreditation

At Stylam Industries Limited, we uphold the highest standards of *quality* and *innovation*. Our products are certified by leading industry bodies, ensuring compliance with international benchmarks for safety, sustainability, and performance.





Leading the Way

Globally & Locally



Europe

- Netherlands
- Italy
- Germany
- Belgium
- France
- Denmark
- Turkey
- Finland
- Estonia
- Switzerland
- Cyprus
- Poland
- Bulgaria
- Spain
- Czech Republic

The Far East

- Indonesia
- Malaysia
- Singapore
- Thailand
- Cambodia
- Philippines
- Taiwan
- Vietnam
- South Korea

The Middle East

- Saudi Arabia
- Kuwait
- Yemen
- Qatar
- Jordan
- Lebanon
- Bahrain
- Iraq
- UAE-Dubai

North America

- USA
- Canada
- Mexico
- Puerto Rico
- Nicaragua
- Dominican Republic

South America

- Colombia
- Venezuela

Global presence in over 80+ countries across Europe, Middle & Far East, the Americas (North and South), Asia, Africa and other geographies.

Increasing domestic presence across the country.

Profit and Loss



(₹ CRORE)

	Q1FY26	Q4FY25	Q1FY25	FY25
NET REVENUE	283	265	243	1025
MATERIAL CONSUMPTION	157	149	135	557
CONTRIBUTION	126	116	108	468
CONTRIBUTION MARGIN (%)	44.52	43.77	44.44	45.66
EMPLOYEE EXPENSES	22	23	19	84
OTHER EXPENSES	51	50	47	199
EBITDA	53	43	42	185
EBITDA MARGIN (%)	18.71	16.19	17.26	18.06
OTHER INCOME	1	1	3	7
FINANCE COSTS	8	0	1	4
DEPRECIATION AND AMORTIZATION	5	6	6	24
PBT	41	38	38	165
PBT MARGIN (%)	14.58	14.22	15.60	16.08
TAX EXPENSE	13	9	9	43
PAT	28	29	28	121
PAT MARGIN (%)	9.92	10.96	11.69	11.81
LAMINATES SHEETS SOLD (# MN)	2.74	3.04	2.81	11.70

Stylam Footprints in

Domestic Market Incharge

Mr. Manav Gupta, Whole Time Director of Stylam Industries, has over 13 year of experience in the laminates industry. He completed his engineering degree from Thapar University in Patiala. He heads the domestic market division of the Company.

Stylam Footprints in

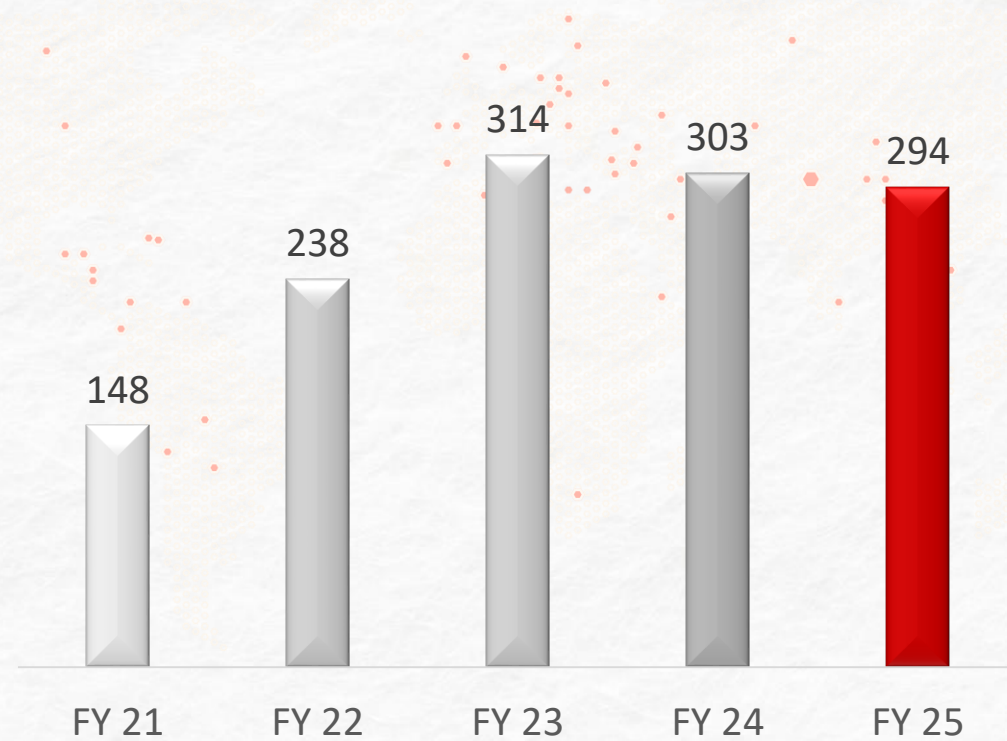
International Market Incharge

Mr. Manit Gupta, Whole Time Director of Stylam Industries, has over 11 year of experience in the laminates industry. He is a chemical engineer and holds as MBA Degree. He heads the international marketing division of the Company. Boasting over a decade of professional experience, he has consistently showcased a remarkable aptitude for driving revenue expansion, forging strategic alliances and adeptly navigating intricate global markets.

Sales Performance

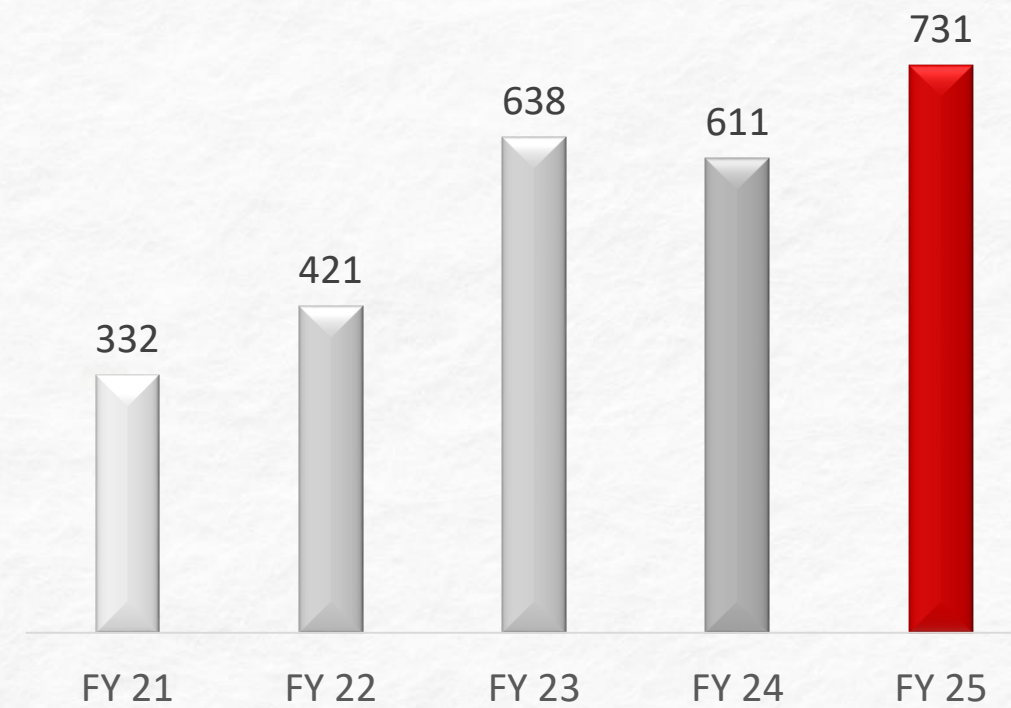
DOMESTIC

(Figures in ₹
Crore)



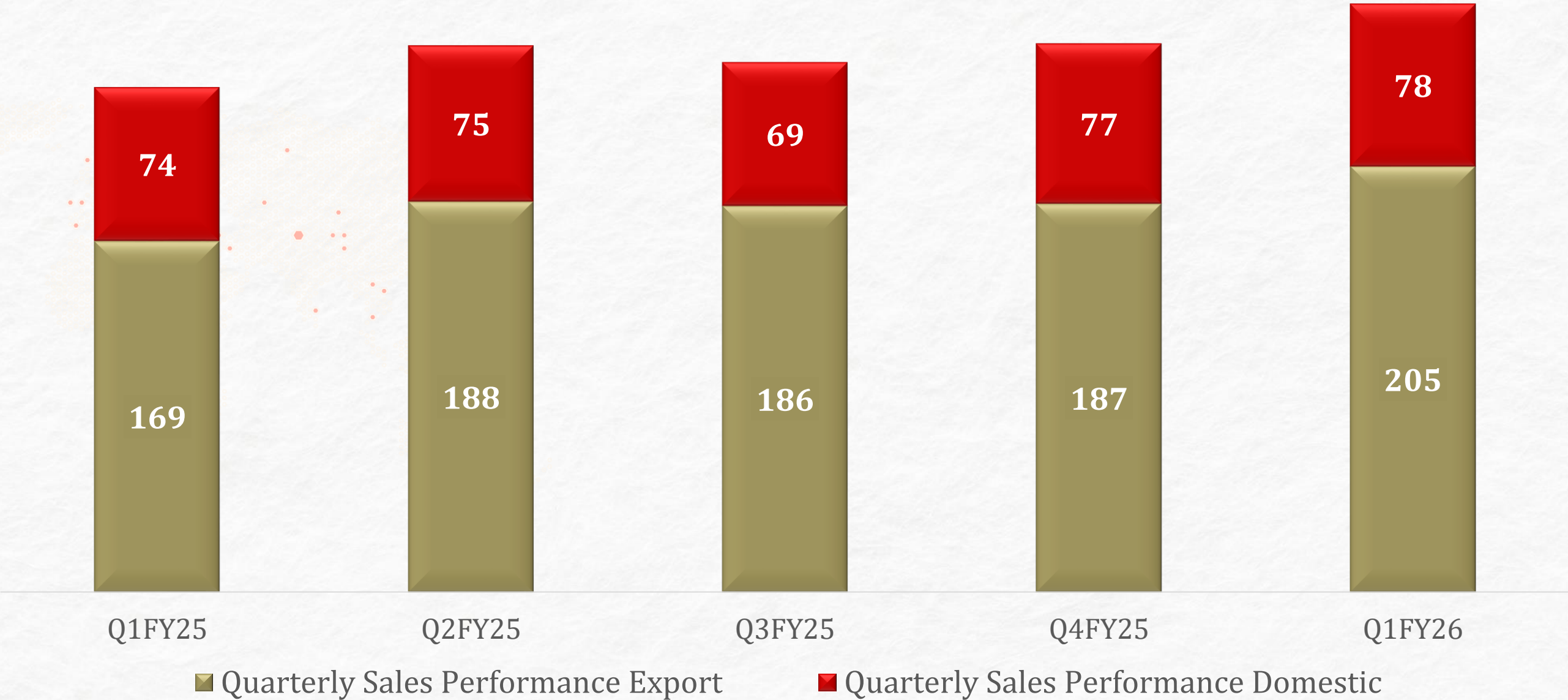
EXPORTS

(Figures in ₹
Crore)



Quarterly Sales Performance

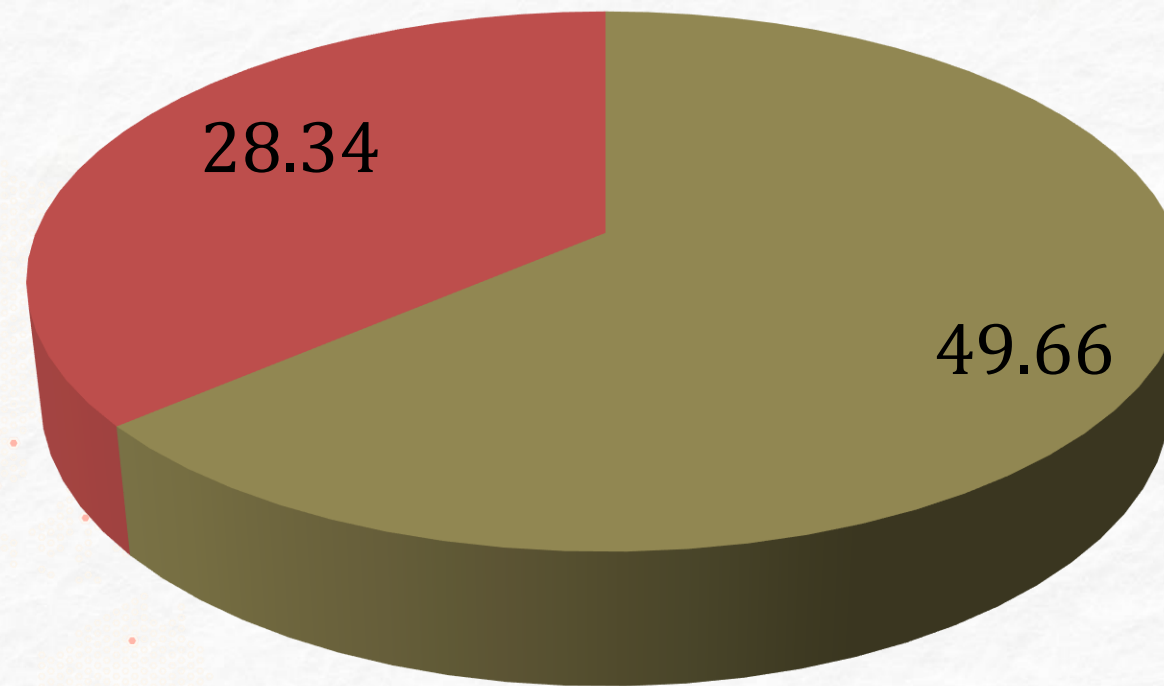
(Figures in ₹ Crore)



Q1FY26

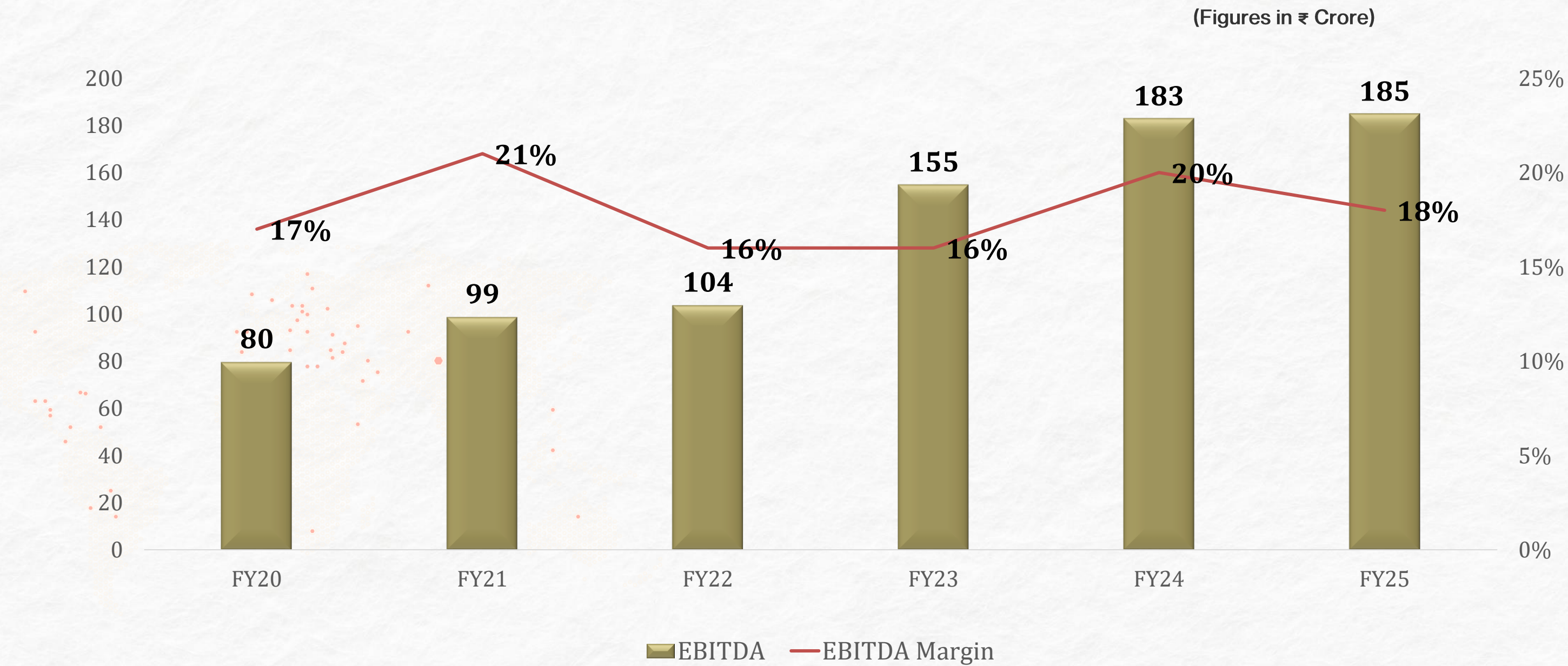
Domestic Sales Performance

(Figures in ₹ Crore)

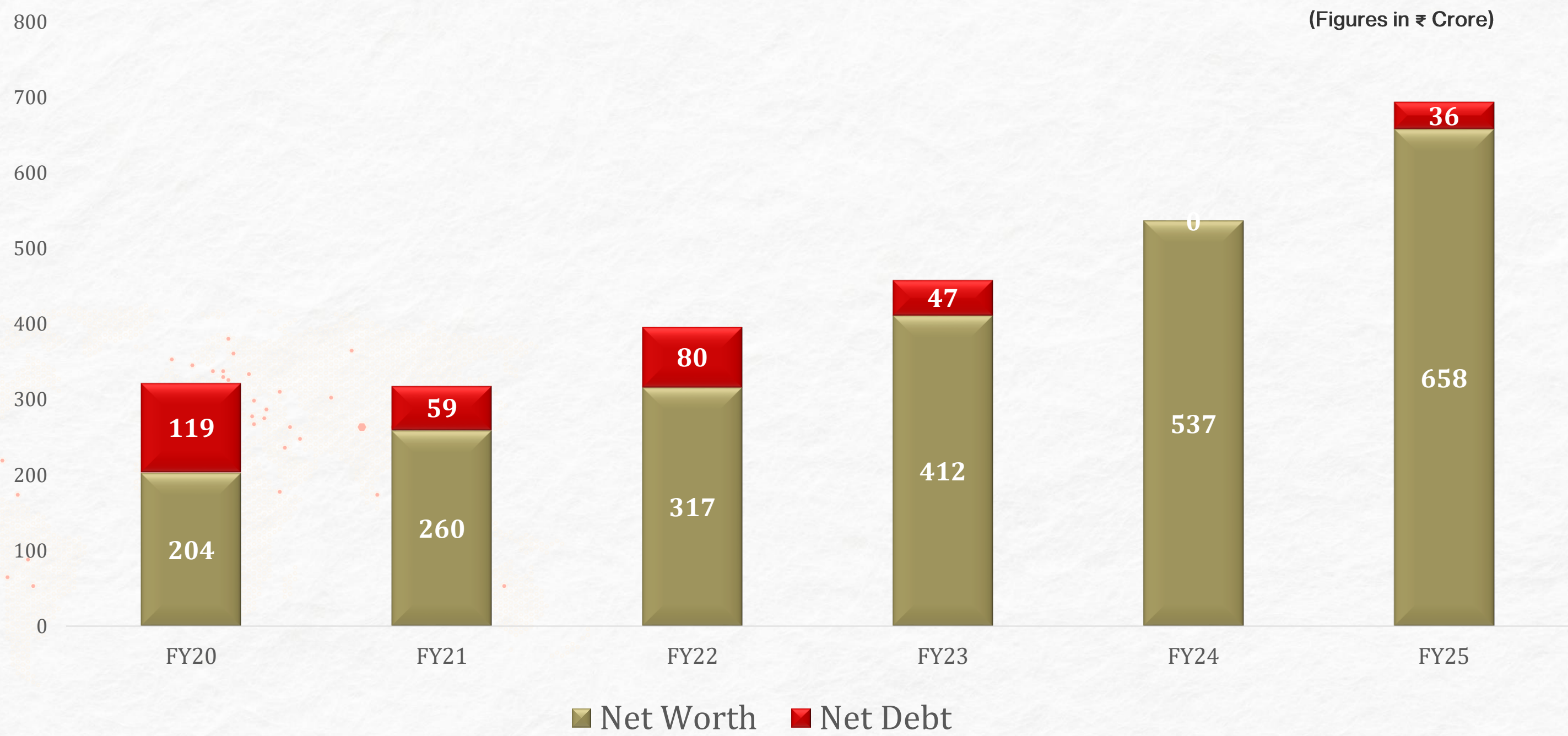


■ HPL Sheet Sales ■ Others Sales

Margin Profile



Balance Sheet Transformation



Sales Performance Overview



- In Q1 of fiscal year 2026, Stylam Industries Ltd. recorded a **17% increase in revenue** compared to the same period last year.
- Stylam maintains its status as a **zero-debt entity**, reflecting strong financial health and effective capital management.
- The construction of the **new expansion plant** is progressing well.
- The rapid advancement in expansion highlights Stylam's commitment to **enhancing production capacity** and meeting increasing market demand.
- Stylam is confident in achieving its financial guidance, indicating sustained momentum for growth.
- **Company has sold 2.74 Mn Laminates Sheets during the Q1 FY 26** (Domestic – 1.22 Mn & Export 1.52 Mn) as compared to 2.81 Mn Laminates Sheets in Q1 FY 25 (Domestic 1.14 Mn & Export 1.67 Mn).

Over the Past Two Years

Progress & Achievements

The company reached approximately 74% capacity utilization in the laminates division following modular expansions at existing facilities, increasing overall capacity.

Became a net debt-free company and maintained this status, even after establishing a new plant.

Enhanced the share of value-added products in the product mix, expanded the product range, and improved net gross margins.

Strengthened domestic presence with deeper market reach and created a strong brand.

Expanded coverage into new regions while increasing business with existing partners.

Nurturing Possibilities for

Tomorrow & Beyond



Revolutionize the Industry
with Smart & Sustainable
Surfaces.

To evolve into the first
choice in our industry.

To evolve into the first
choice in our industry.



Indiawood Expo Bangalore

Stylam actively participates in domestic exhibitions to showcase its product range and latest innovations.



Exhibition Worldwide

We take part in international exhibitions in key locations such as Dubai, Germany, Atlanta, and Bogota to display our products, connect with potential clients, and seek out new market opportunities.





International Trips



Skill Development Program

Stylam, as a member of the Furniture & Fittings Skill Council (FFSC), aims to bridge the skills gap by creating formal training programs. Collaborating with FFSC, they provide customized training to certify the workforce and develop new talent, promoting employment, entrepreneurship, and industry growth.





Dealer Certificates

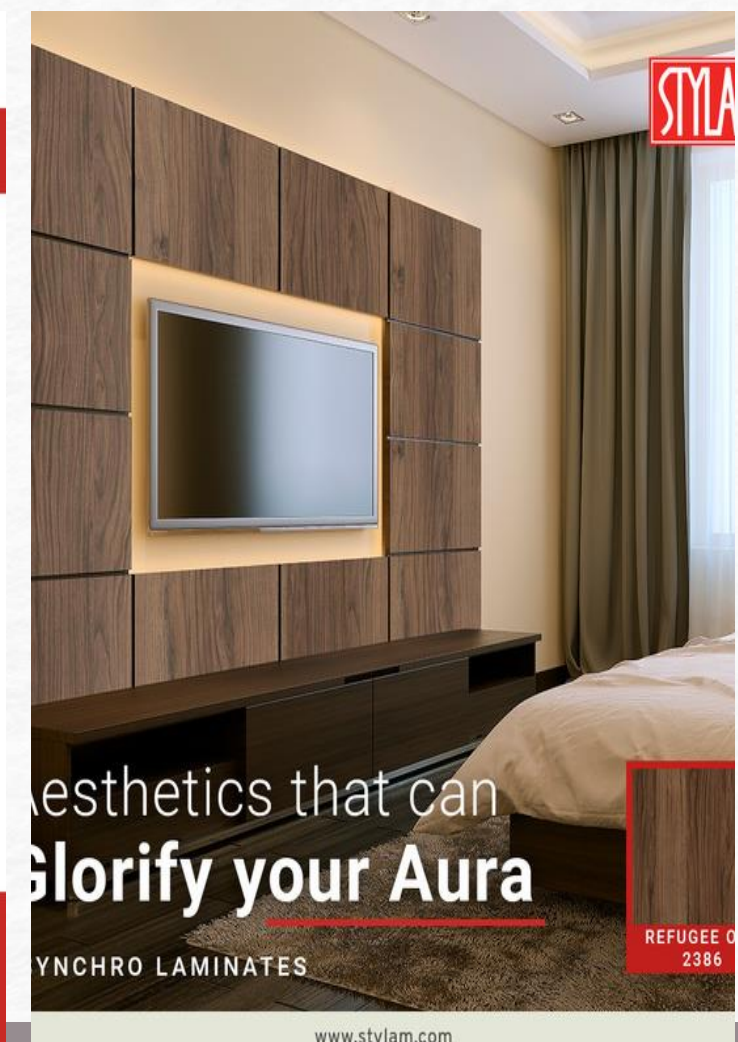
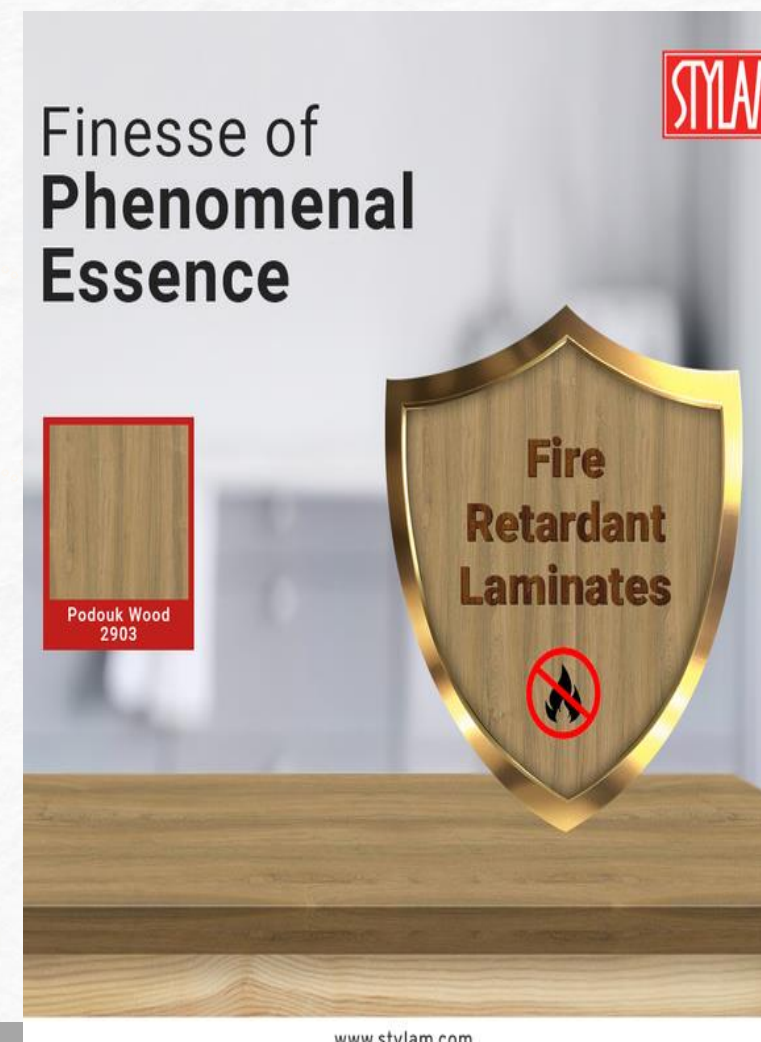
Stylam actively engages in exhibitions across the globe to establish a robust international presence and showcase its diverse range of products to a wide audience.





Digital Marketing

Our digital marketing campaign is designed to connect, engage, and inspire our target audience with impactful storytelling and innovative strategies. Leveraging data-driven insights, we aim to deliver personalized content across multiple platforms, creating meaningful interactions that resonate with architects, designers, and customers alike.





Message from

Board of Director

“Stylam Industries is a leader in decorative laminates and building materials, operating in over 80 countries. Committed to Vision 2030, the company offers innovative solutions that create value for customers. Their diverse product range and adaptability help them thrive amid economic uncertainties. Stylam focuses on value-driven products and operational excellence, aiming to build trust and transform spaces.”

Safe Harbor Statement



This presentation and the accompanying slides (the “Presentation”), which have been prepared by Stylam Industries Limited (the “Company”), have been prepared solely for information purposes and DOES not constitute any offer, recommendation or invitation to purchase or subscribe for any securities, and shall not form the basis of or be relied on in connection with any contract or binding commitment whatsoever. The Presentation is not intended to form the basis of any investment decision by a prospective investor. No offering of securities of the Company will be made except by means of a statutory offering document containing detailed information about the Company.

This Presentation has been prepared by the Company based on information and data which the Company considers reliable, but the Company makes no representation or warranty, express or implied, whatsoever, and no reliance shall be placed on, the truth, accuracy, reliability or fairness of the contents of this Presentation. This Presentation may not be all inclusive and may not contain all of the information that you may consider material. Any liability in respect of the contents of or any omission from, this Presentation is expressly excluded. In particular, but without prejudice to the generality of the foregoing, no representation or warranty whatsoever is given in relation to the reasonableness or achievability of the projections contained in the Presentation or in relation to the bases and assumptions underlying such projections and you must satisfy yourself in relation to the reasonableness, achievability and accuracy thereof.

Certain matters discussed in this Presentation may contain statements regarding the Company’s market opportunity and business prospects that are individually and collectively forward-looking statements. Such forward-looking statements are not guarantees of future performance and are subject to known and unknown risks, uncertainties and assumptions that are difficult to predict. These risks and uncertainties include, but are not limited to, the performance of the Indian economy and of the economies of various international markets, the performance of the wind power industry in India and world-wide, the Company’s ability to successfully implement its strategy, the Company’s future levels of growth and expansion, technological implementation, changes and advancements, changes in revenue, income or cash flows, the Company’s market preferences and its exposure to market risks, as well as other risks. The Company’s actual results, levels of activity, performance or achievements could differ materially and adversely from results expressed in or implied by this Presentation. The Company assumes no obligation to update any forward-looking information contained in this Presentation. Any forward-looking statements and projections made by third parties included in this Presentation are not adopted by the Company and the Company is not responsible for such third-party statements and projections.

No responsibility or liability is accepted for any loss or damage howsoever arising that you may suffer as a result of this Presentation and any and all responsibility and liability is expressly disclaimed by the Management, the Shareholders and the Company or any of them or any of their respective directors, officers, affiliates, employees, advisers or agents.



Contact Us

Get in Touch

Thank You!



SCO 14, Sector 7-C, Madhya
Marg, Chandigarh - 160019
(INDIA)



+91-172-5021555, 5021666



www.stylam.com