

**Government of India**  
**Ministry of Petroleum and Natural Gas**  
**Economic & Statistics Division**

\*\*\*\*\*

New Delhi  
26<sup>th</sup> March, 2024

**Monthly Production Report**  
**February 2024**

**1. Production of Crude Oil**

**Crude oil production<sup>1</sup>** during February 2024 was 2331.68 TMT, which is 1.70% lower than target for the month and 7.88% higher than the production of February 2023. Cumulative crude oil production during April-February, 2024 was 26852.78 TMT, which is 2.26% lower than target for the period and 0.48% higher than production during corresponding period of last year respectively. Unit-wise and State-wise crude oil production is given at **Annexure-I**. Unit-wise crude oil production for the month of February 2024 and cumulatively for April - February 2023-24 vis-a-vis same period of last year has been shown in Table-1 and month - wise in Figure-1.

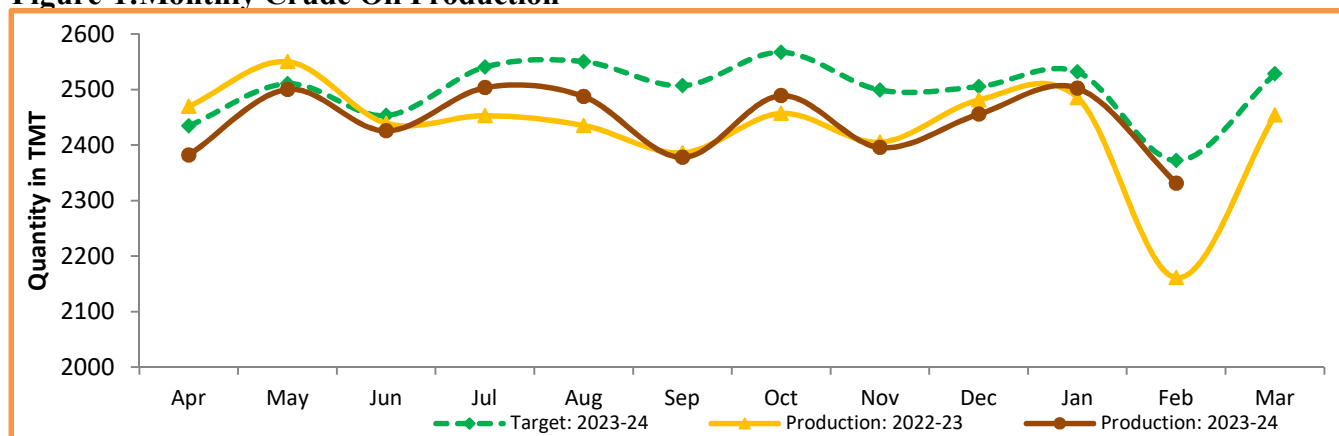
**Table-1: Crude Oil Production (in TMT)**

Oil Company	Target	February (Month)				April-February (Cumulative)			
		2024		2023	% Variation over last year	2023-24		2022-23	% Variation over last year
		Target*	Prod.*	Prod.		Target*	Prod.*	Prod.	
ONGC (Nomination Block)	19227.54	1499.66	1527.26	1442.63	5.87	17622.19	17575.23	17836.95	-1.47
OIL (Nomination Block)	3371.00	272.46	264.05	245.86	7.40	3079.63	3052.38	2879.41	6.01
Pvt/JVs (PSC/RSC Regime)	7404.07	599.97	540.37	472.88	14.27	6772.17	6225.16	6007.85	3.62
<b>Total</b>	<b>30002.60</b>	<b>2372.09</b>	<b>2331.68</b>	<b>2161.37</b>	<b>7.88</b>	<b>27474.00</b>	<b>26852.78</b>	<b>26724.21</b>	<b>0.48</b>

Note: Totals may not tally due to rounding off.\*: Provisional # : Data Awaited

<sup>1</sup>Inclusive Condensate

**Figure-1: Monthly Crude Oil Production**



Unit-wise production details with reasons for shortfall are as under:

**1.1** Crude oil production by **ONGC** (Oil and Natural Gas Corporation) in nomination block during February 2024 was 1527.26 TMT, which is 1.84% higher than target of the month and 5.87% higher when compared with production of February 2023. Cumulative crude oil production by ONGC during April-February, 2024 was 17575.23 TMT, which is 0.27% lower than target for the period and 1.47% lower than production during corresponding period of last year respectively. Reasons for shortfall in production are as under:

- Less than planned Production from WO-16.
- Only 4 oil wells of KG-DWN-98/2 Cluster-II are put on production due to delay in project. Losses due to operational issues like unplanned Power shut down, Flowing Well Falling Sick, abandonment of high producing OP's and critical Air injectors, water cut increase in Balol & Santhal, delay in initiation of Linch Polymer flood scheme and liquid decline & water cut increase in Lanwa, Jotana in Mehsana Asset.
- Losses due to less number of new inputs in Asset along with other operational issues like unplanned Power shut down, Flowing Well Falling Sick, liquid decline & water cut increase in Nawagam & less than envisaged production in Jhalora field in Ahmedabad Asset.
- Water cut increase and potential decline in Gandhar, Ankleshwar and Jambusar fields in Ankleshwar Asset.
- Reservoir issues like high water cut & less influx in Geleki, Laplingaon, Lakwa/Lakhmani fields & stoppage of G/L compressor in Laiplingaon due to local issues in Assam Asset. Higher rate of base decline in Lakwa and Geleki fields.
- Closure of wells for reservoir management and to reduce flaring, EC/FC & DAB issue, and Liquid decline & W/C increase in Khoraghat field in Jorhat Asset. Less gains from development wells.

**1.2** Crude oil production by **OIL** (Oil India Ltd) in the nomination block during February 2024 was 264.05 TMT, which is 3.09% lower than the target of the month but 7.40% higher when compared with production of February, 2023. Cumulative crude oil production by OIL during April-February, 2024 was 3052.38 TMT, which is 0.88% lower than target for the period but 6.01% higher when compared production during corresponding period of last year. Reasons for shortfall in production are as under:

- Less than planned contribution from workover wells and drilling wells.
- Less than planned contribution from drilling wells/old wells.
- Less than planned contribution from workover wells.
- Less production due to low customer Demand, Operation Related Loss.

**1.3** Crude oil production by **Pvt / JVs** companies in the PSC / RSC regime during February 2024 was 540.36 TMT, which is 9.94% lower than the target of the reporting month and 14.27% higher than the month production of February, 2023. Cumulative crude oil production by Pvt / JVs companies during April-February 2024 was 6225.16 TMT, which is 8.08% lower but 3.61% higher than target for the period and production during corresponding period of last year respectively. Reasons for shortfall in production are as under :

- RJ-ON-90/1(Vedanta):
  1. BHAGYAM: Well failures and unplanned downtime.
  2. AISHWARYA: Delay in surface facilities for polymer injection in Aishwarya Upper Fatehgarh.
  3. NE: NE-01 and NE-03 well failure.
  4. SARASWATI: Shut-in of Saraswati-5 due to tubing integrity issues.

- CB-ONN-2003/1(SUN): Partial shutdown of production facility for maintenance activities from 16.01.2024.
- CB-OS/2(Vedanta): Well GA-5 shut-in due to sand ingresson.
- PY-3(HARDY): -Production commencement delayed due to the unavailability of subsea equipment.
- KG-DWN-98/3(RIL): - Closure of 01 well in MJ & 01 well in Satellite Cluster Fields for pressure build-up study.

## 2. Production of Natural Gas

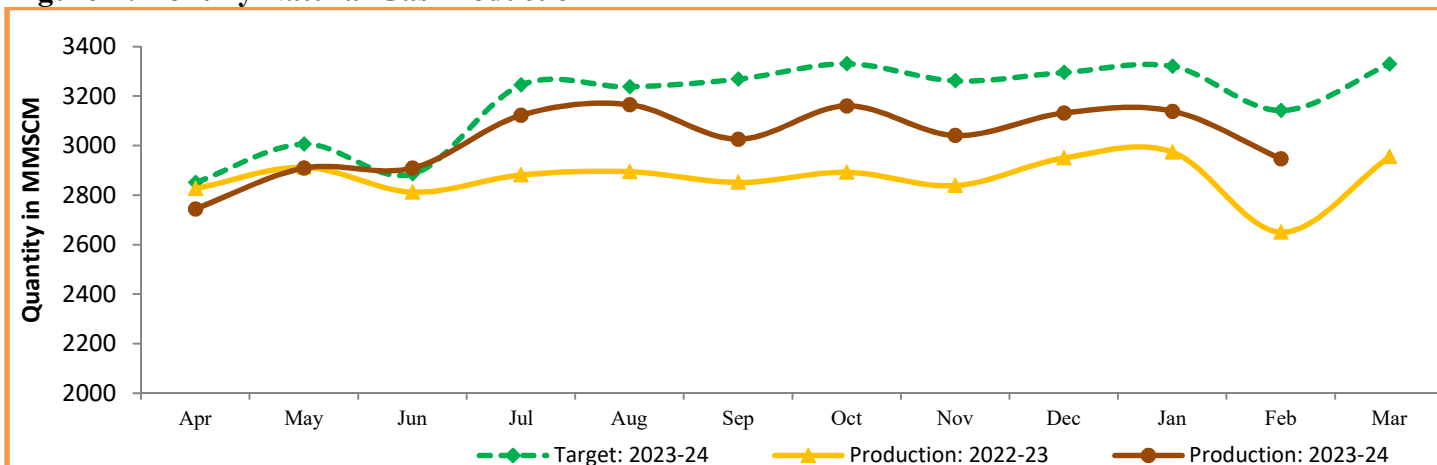
**Natural gas production** during February 2024 was 2946.72 MMSCM, which is 6.24% lower than the monthly target but 11.14% higher than the production of February 2023. Cumulative natural gas production during April-February 2024 was 33299.39 MMSCM, which is 4.45% lower when compared with target for the period but 5.73% higher than production during corresponding period of last year. Unit-wise and state-wise natural gas production is given at **Annexure-II**. Unit-wise natural gas production for the month of February 2024 and cumulatively for April-February 2023-24 vis-a-vis same period of last year has been shown in Table-2 and month-wise in Figure-2

**Table-2:Natural Gas Production (in MMSCM)**

Oil Company	Target	February (Month)				April-February (Cumulative)			
	2023-24 (Apr-Mar)*	2024		2023	% Variation over last year	2023-24		2022-23	% Variation over last year
		Target*	Prod.*	Prod.		Target*	Prod.*	Prod.	
ONGC (Nomination Block)	20559.06	1634.20	1509.67	1512.16	-0.16	18827.89	17699.13	18273.21	-3.14
OIL (Nomination Block)	3154.99	250.73	246.05	232.59	5.78	2886.97	2813.18	2780.12	1.19
Pvt/JVs (PSC/RSC Regime)	14466.50	1257.94	1191.00	906.63	31.36	13136.14	12787.09	10440.88	22.47
<b>Total</b>	<b>38180.54</b>	<b>3142.86</b>	<b>2946.72</b>	<b>2651.39</b>	<b>11.14</b>	<b>34851.00</b>	<b>33299.39</b>	<b>31494.22</b>	<b>5.73</b>

Note: Totals may not tally due to rounding off.\*: Provisional # : Data Awaited

**Figure-1:Monthly Natural Gas Production**



**2.1** Natural gas production by **ONGC** (Oil and Natural Gas Corporation) in the nomination blocks during February 2024 was 1509.67 MMSCM, which is 7.62% lower target for the month and 0.16% lower than the production of February 2023. Cumulative natural gas production by ONGC during April-February, 2024 was 17699.13 MMSCM, which is 6.00% lower and 3.14% lower than target for the period and production during corresponding period of last year respectively. Reasons for shortfall in production are as under:

- KG-98/2 Cluster-2: Wells are producing less than estimated profile. Also associated gas of oil wells couldnt be realized fully as only 4 oil wells were put on production due to delay in project.
- Less than planned gas production from WO-16.
- Less than anticipated production from Daman fields.
- Less gas production from Vashishtafield.
- Decline in Gandhar, Jambusar & Olpad fields in Ankleshwar Asset.
- Delay in drilling of new wells due to pending EC/FC in Gojalia, Tichna, Baramura fields & linelaying for connection of wells in Gojalia&Baramura fields due to ROU issues in Tripura Asset. Closure of high producer wells in Agartala Dome, Rokhia&Sundalbari fields.
- Closure of wells for reservoir management and to reduce flaring, consumer issues, EC/FC & DAB issue and in Jorhat Asset.
- Rajahmundry Asset: Delay in commencement of production from Bantumilli South field. Decline in Kesavadasupalem& Kesanapalli West field. Consumer issues, delay in HF in Mandapeta & Water Loading in LP wells, decrease in FTTHP in HP wells.
- Less gas offtake by consumer and restriction on new drilling due to non-availability of Environment Clearance in Cauvery Asset in the state of Tamilnadu.
- ProductionDeclineinfreegaswells ofLaipalingaonfields and less associated gas due to decline in oil and GOR in Assam Asset.

**2.2** Natural gas production by **OIL** (Oil India Ltd) in the nomination block during February 2024 was 246.05 MMSCM which is 1.87% lower than the target for the month of current year but 5.78% higher than production of corresponding month of last year. Cumulative natural gas production by OIL during April-February 2024 was 2813.18 MMSCM, which is 2.56% lower than target for the period but 1.19% higher than production during corresponding period of last year. Reasons for shortfall in production are as under:

- Loss due to Operational reasons.
- Less than planned contribution from Drilling and workover wells.
- Low offtake by major consumers

**2.3** Natural gas production by Pvt / JVs companies in the PSC / RSC / CBM regime during February 2024 was 1191.0 MMSCM, which is 5.32% lower than the target for the month but 31.36% higher when compared the production of February 2023. Cumulative natural gas production by Pvt / JVs during April-February, 2024 was 12787.09 MMSCM, which is 2.66% lower than target for the period but 22.47% higher than production during corresponding period of last year. Reasons for shortfall in production are as under:

- KG-DWN-98/2(ONGC): Wells in U-field are producing less than estimated profile. Associated gas Production from M Field with 4 wells started from 07th Jan 24 due to delay in project.
- RJ-ON-90/1(VEDANTA): Natural decline in existing wells and delay in ongoing ramp-up in infillwells of RDG Field.

- RJ-ON/6(FEL): Natural decline from wells and low consumer demand.
- AMGURI(OILMAX): Low consumer demand of natural gas.
- AAP-ON-94/1(HOEC): Low consumer demand of natural gas.

### 3. Crude Oil Processed (Crude Throughput)

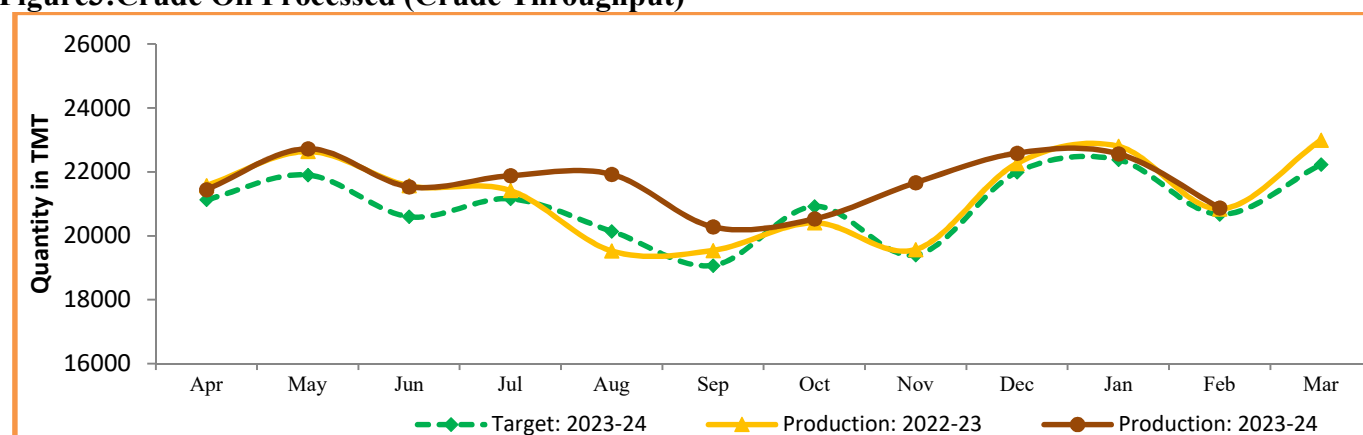
**Crude Oil Processed** during February 2024 was 20877.12 TMT, which is 0.97% higher than target for the month but 0.14% higher than the February 2023. Cumulative crude processed during April-February, 2024 was 238042.36 TMT, which is 3.75% higher than target for the period and 2.50% higher than production during corresponding period of last year respectively. Refinery-wise details of the crude throughput and capacity utilization during the month of February 2024 vis-a-vis February 2023 are given at **Annexure-III** and **Annexure-IV**. Company-wise crude throughput for the month of February 2024 and cumulatively for the period April - February 2024 vis-a-vis same period of last year has been shown in Table-3 and month wise in Figure-3.

**Table3: Crude Oil Processed (Crude Throughput) (in TMT)**

Oil Company	Target	February (Month)				April-February (Cumulative)			
	2023-24 (Apr-Mar)*	2024		2023	% Variation over last year	2023-24		2022-23	% Variation over last year
		Target*	Prod.*	Prod.		Target*	Prod.*	Prod.	
CPSE	159219.11	13312.76	13483.02	13415.61	0.50	145053.45	150792.18	146673.52	2.81
IOCL	71950.45	5979.84	5630.93	5938.40	-5.18	65765.39	66748.79	65711.72	1.58
BPCL	37300.00	3070.00	3174.59	3356.68	-5.42	33970.00	35848.58	34767.66	3.11
HPCL	21005.62	1777.67	1933.65	1549.49	24.79	19042.55	20329.50	17343.10	17.22
CPCL	10200.00	870.00	1013.93	927.88	9.27	9270.00	10569.82	10282.09	2.80
NRL	2800.00	260.00	261.60	244.06	7.18	2523.00	2223.90	2886.34	-22.95
MRPL	15900.00	1350.00	1462.33	1392.99	4.98	14425.00	15011.26	15614.03	-3.86
ONGC	63.04	5.26	6.01	6.12	-1.78	57.51	60.33	68.58	-12.03
Pvt/JVs	92449.37	7362.84	7394.09	7432.18	-0.51	84379.35	87250.18	85555.65	1.98
HMEL	11451.69	938.68	884.58	1008.02	-12.25	10448.62	11544.52	11624.92	-0.69
RIL	62305.23	4855.94	4887.22	4855.94	0.64	56945.48	57111.32	56945.48	0.29
NEL	18692.45	1568.22	1622.29	1568.22	3.45	16985.25	18594.34	16985.25	9.47
<b>TOTAL</b>	<b>251668.48</b>	<b>20675.60</b>	<b>20877.12</b>	<b>20847.79</b>	<b>0.14</b>	<b>229432.80</b>	<b>238042.36</b>	<b>232229.17</b>	<b>2.50</b>

Note: Totals may not tally due to rounding off.\*: Provisional # : Data Awaited

**Figure3:Crude Oil Processed (Crude Throughput)**



**3.1 CPSE Refineries' crude oil processed** during February 2024 was 13483.02 TMT, which is 1.28% higher than target for the month and 0.50% higher than the production of February 2023. Cumulative crude throughput during April-February, 2024 was 150792.18 TMT which is 3.96% higher than target for the period and 2.81% higher than production during corresponding period of last year respectively. Reasons for shortfall in production are as under:

- **BPCL-Kochi:** Due to extended plant shutdown of DHDT unit, on account of unexpected unplanned maintenance activities identified during the shutdown.
- **HPCL - Mumbai:** Crude Throughput and production of petroleum products is lower than the target due to water shortage.

**3.2 Private & JVs Refineries' crude oil processed** during February 2024 was 7394.09 TMT, which is 0.42% higher than the target for the month but 0.51% lower than the production of February, 2023. Cumulative crude throughput during April-February, 2024 was 87250.18 TMT, which is 3.40% higher and 1.98% higher than target for the period and production during corresponding period of last year respectively.

#### 4. Production of Petroleum Products

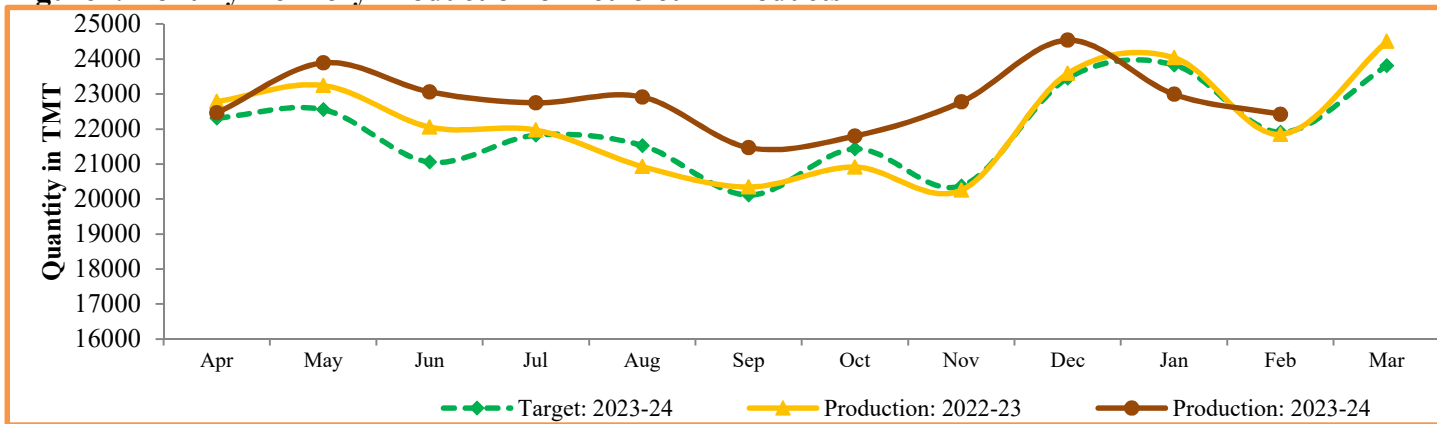
**Production of Petroleum Products** during February 2024 was 22428.79 TMT, which is 2.35% higher than the target for the month and 2.63% higher than the production of February 2023. Cumulative production during April-February, 2024 was 251155.80 TMT, which is 4.46% higher and 3.77% higher than target for the period and production during corresponding period of last year respectively. Unit-wise production of petroleum products is given at **Annexure-V**. Company-wise production for the month of February 2024 and cumulatively for April-February 2024 vis-a-vis same period of last year has been shown in Table-4 and month-wise in Figure-4.

**Table4: Production of Petroleum Products (TMT)**

Oil Company	Target	February (Month)				April-February (Cumulative)			
	2023-24 (Apr-Mar)*	2024		2023	% Variation over last year	2023-24		2022-23	% Variation over last year
		Target*	Prod.*	Prod.		Target*	Prod.*	Prod.	
<b>CPSE</b>	<b>150382.88</b>	<b>12635.66</b>	<b>12799.54</b>	<b>12628.59</b>	<b>1.35</b>	<b>136995.91</b>	<b>142911.68</b>	<b>137521.67</b>	<b>3.92</b>
IOCL	70025.95	5889.85	5502.33	5748.79	-4.29	63983.53	64641.74	62705.51	3.09
BPCL	34386.56	2829.80	2926.63	3147.64	-7.02	31315.89	33743.91	32456.67	3.97
HPCL	19299.67	1630.19	1762.37	1343.60	31.17	17501.41	18952.50	15970.04	18.68
CPCL	9504.18	812.19	987.13	908.03	8.71	8637.95	9948.14	9571.70	3.93
NRL	2747.12	253.68	270.32	233.51	15.77	2476.09	2211.34	2875.31	-23.09
MRPL	14359.38	1214.96	1345.49	1241.01	8.42	13026.28	13355.82	13876.84	-3.75
ONGC	60.02	5.00	5.27	6.01	-12.36	54.75	58.23	65.61	-11.24
<b>Pvt/JVs</b>	<b>110298.14</b>	<b>9001.33</b>	<b>9356.34</b>	<b>8991.83</b>	<b>4.05</b>	<b>100165.25</b>	<b>105067.82</b>	<b>101325.25</b>	<b>3.69</b>
HMEL	10279.28	873.95	865.24	864.45	0.09	9351.32	11107.96	10511.32	5.68
RIL	82086.59	6582.18	6877.51	6582.18	4.49	74516.80	75969.57	74516.80	1.95
NEL	17932.27	1545.20	1613.59	1545.20	4.43	16297.13	17990.29	16297.13	10.39
<b>Total Refinery</b>	<b>260681.02</b>	<b>21637.00</b>	<b>22155.88</b>	<b>21620.42</b>	<b>2.48</b>	<b>237161.16</b>	<b>247979.50</b>	<b>238846.92</b>	<b>3.82</b>
Fractionators	3576.16	276.91	272.92	233.21	17.02	3278.40	3176.30	3186.90	-0.33
<b>TOTAL</b>	<b>264257.17</b>	<b>21913.91</b>	<b>22428.79</b>	<b>21853.63</b>	<b>2.63</b>	<b>240439.56</b>	<b>251155.80</b>	<b>242033.82</b>	<b>3.77</b>

Note: Totals may not tally due to rounding off. \*: Provisional #: Data Awaited

**Figure4:Monthly Refinery Production of Petroleum Products**



**4.2** Production of petroleum Products by **Oil's Refineries** during February 2024 was 22155.88 TMT, which is 2.40% higher than target for the month and 2.48% higher than the production of February 2023. Cumulative production during April-February, 2024 was 247979.50 TMT, which is 4.56% higher and 3.82% higher than target for the period and production during corresponding period of last year respectively.

**4.3** Production of petroleum Products by **Fractionators** during February 2024 was 272.92 TMT, which is 1.44% lower than the target for the month and 17.02% higher than production of February 2023. Cumulative production during April-February, 2024 was 3176.30 TMT, which is 3.11% lower than target for the period and 0.33% lower production during corresponding period of last year.

**Note:** Report (MPR) is generated through API from Pariyojana Portal as on 10/03/2024

## Crude Oil Production during the month of February, 2024 and cumulatively for the period April-February, 2023-24 vis-à-vis April-February, 2022-23

(Figures in Thousand Metric Tons)										
Name of Undertaking/Unit/State	Target production during the month*	Production during the			Cumulative Production			% variation over last year		% variation during the month under review over Target production
		Month under review *	Corresponding month of last year	Preceding month of current year **	(April-February)			During the month under review	Upto the end of the period	
Target production during current year	Actual production during current year *				Actual production during corresponding period of last year					
(1)	(2)	(3)	(4)	(5)	(6)	(7)	(8)	(9)	(10)	(11)
<b>1. ONGC</b>	<b>1499.66</b>	<b>1527.26</b>	<b>1442.63</b>	<b>1633.62</b>	<b>17622.19</b>	<b>17575.23</b>	<b>17836.95</b>	<b>5.87</b>	<b>-1.47</b>	<b>1.84</b>
<b>Onshore</b>	<b>491.77</b>	<b>485.06</b>	<b>459.58</b>	<b>515.46</b>	<b>5638.39</b>	<b>5484.59</b>	<b>5444.26</b>	<b>5.54</b>	<b>0.74</b>	<b>-1.37</b>
Andhra Pradesh	14.57	19.23	15.84	18.49	171.09	181.40	185.48	21.40	-2.20	31.94
Assam	88.09	83.83	78.33	89.43	997.18	955.09	918.10	7.02	4.03	-4.84
Gujarat	372.19	363.08	345.95	387.69	4258.08	4140.32	4102.68	4.95	0.92	-2.45
Tamil Nadu	16.78	18.72	19.20	19.66	210.28	205.88	235.54	-2.51	-12.59	11.59
Tripura	0.14	0.20	0.27	0.19	1.76	1.90	2.45	-23.37	-22.32	44.23
<b>Offshore</b>	<b>1007.89</b>	<b>1042.21</b>	<b>983.05</b>	<b>1118.16</b>	<b>11983.80</b>	<b>12090.64</b>	<b>12392.69</b>	<b>6.02</b>	<b>-2.44</b>	<b>3.41</b>
Eastern Offshore	1.25	0.87	0.73	0.82	15.40	8.39	16.08	19.98	-47.79	-30.57
Western Offshore	1006.63	1041.34	982.32	1117.34	11968.40	12082.25	12376.61	6.01	-2.38	3.45
<b>2. OIL (Onshore)</b>	<b>272.46</b>	<b>264.05</b>	<b>245.86</b>	<b>288.36</b>	<b>3079.63</b>	<b>3052.38</b>	<b>2879.41</b>	<b>7.40</b>	<b>6.01</b>	<b>-3.09</b>
Assam	266.34	258.65	241.66	282.59	3016.23	3001.01	2843.12	7.03	5.55	-2.89
Arunachal Pradesh	2.35	2.88	2.48	2.89	27.48	28.87	21.61	16.04	33.57	22.45
Rajsthan (heavy oil)	3.77	2.53	1.72	2.88	35.92	22.50	14.67	47.26	53.37	-32.92
<b>3. Private / JVC</b>	<b>599.97</b>	<b>540.37</b>	<b>472.88</b>	<b>580.67</b>	<b>6772.17</b>	<b>6225.16</b>	<b>6007.85</b>	<b>14.27</b>	<b>3.62</b>	<b>-9.94</b>
<b>Onshore</b>	<b>404.83</b>	<b>350.34</b>	<b>396.87</b>	<b>396.58</b>	<b>4926.44</b>	<b>4603.29</b>	<b>5157.93</b>	<b>-11.73</b>	<b>-10.75</b>	<b>-13.46</b>
Andhra Pradesh	8.33	4.48	2.42	5.96	66.12	43.65	31.05	85.19	40.60	-46.23
Arunachal Pradesh	2.15	1.82	1.72	1.92	23.28	18.37	21.37	5.49	-14.05	-15.43
Assam	4.10	2.20	2.73	1.58	46.95	25.44	39.41	-19.22	-35.44	-46.33
Gujarat	43.74	21.54	31.76	32.05	482.34	396.28	330.11	-32.16	20.04	-50.75
Rajasthan	341.61	314.81	352.74	349.12	4248.95	4057.14	4671.00	-10.75	-13.14	-7.84
Tamil Nadu	4.90	5.48	5.51	5.95	58.80	62.40	64.98	-0.52	-3.96	11.89
West Bengal	0.00	0.00	0.00	0.00	0.00	0.00	0.01	-	-	-
<b>Offshore</b>	<b>195.14</b>	<b>190.03</b>	<b>76.01</b>	<b>184.08</b>	<b>1845.74</b>	<b>1621.87</b>	<b>849.92</b>	<b>150.01</b>	<b>90.83</b>	<b>-2.62</b>
Eastern Offshore	160.35	166.53	46.09	158.01	1449.43	1276.92	486.10	261.35	162.68	3.86
Gujarat Offshore	30.15	20.11	25.48	22.20	342.65	306.55	344.51	-21.09	-11.02	-33.30
Western Offshore	4.65	3.39	4.44	3.87	53.66	38.41	19.31	-	98.89	-27.10
<b>GRAND TOTAL (1+2+3)</b>	<b>2372.09</b>	<b>2331.68</b>	<b>2161.37</b>	<b>2502.64</b>	<b>27474.00</b>	<b>26852.78</b>	<b>26724.21</b>	<b>7.88</b>	<b>0.48</b>	<b>-1.70</b>
Onshore	1169.06	1099.44	1102.31	1200.40	13644.46	13140.26	13481.59	-0.26	-2.53	-5.96
Offshore	1203.03	1232.24	1059.06	1302.24	13829.54	13712.52	13242.61	16.35	3.55	2.43

Note: Totals may not tally due to rounding off figures.

\*: Provisional. \*\*:Revised

Source: Oil &amp; Gas Companies and DGH

Reasons for shortfall are indicated in the note.



## Natural Gas Production during the month of February, 2024 and cumulatively for the period April-February, 2023-24 vis-à-vis April-February, 2022-23

(Figures in Million Cubic Meters)

Name of Undertaking/Unit/State	Target production during the month*	Production during the			Cumulative Production			% variation over last year		% variation during the month under review over Target production
		Month under review *	Corresponding month of last year	Preceding month of current year **	(April-February)			During the month under review	Upto the end of the period	
(1)	(2)	(3)	(4)	(5)	(6)	(7)	(8)	(9)	(10)	(11)
<b>1. ONGC</b>	<b>1634.20</b>	<b>1509.67</b>	<b>1512.16</b>	<b>1639.09</b>	<b>18827.89</b>	<b>17699.13</b>	<b>18273.21</b>	<b>-0.16</b>	<b>-3.14</b>	<b>-7.62</b>
<b>Onshore</b>	<b>407.69</b>	<b>317.91</b>	<b>364.83</b>	<b>352.37</b>	<b>4574.35</b>	<b>3988.26</b>	<b>4255.31</b>	<b>-12.86</b>	<b>-6.28</b>	<b>-22.02</b>
Andhra Pradesh	85.24	58.35	52.00	65.95	863.45	639.61	643.99	12.19	-0.68	-31.55
Assam	37.65	25.78	26.69	28.17	430.98	308.08	324.60	-3.38	-5.09	-31.53
Gujarat	63.60	62.13	64.23	63.68	745.79	719.20	768.29	-3.27	-6.39	-2.31
Rajasthan	4.20	0.00	0.00	0.00	50.10	0.00	0.00	0.00	0.00	0.00
Tamil Nadu	86.30	61.00	83.24	72.18	1013.48	912.45	990.54	-26.72	-7.88	-29.32
Tripura	130.70	110.65	138.67	122.38	1470.54	1408.93	1527.89	-20.21	-7.79	-15.34
<b>Offshore</b>	<b>1226.50</b>	<b>1191.77</b>	<b>1147.33</b>	<b>1286.73</b>	<b>14253.55</b>	<b>13710.87</b>	<b>14017.90</b>	<b>3.87</b>	<b>-2.19</b>	<b>-2.83</b>
Eastern Offshore	60.30	18.30	15.04	17.47	438.04	194.72	191.58	21.68	1.64	-69.64
Western Offshore	1166.20	1173.46	1132.29	1269.26	13815.51	13516.15	13826.32	3.64	-2.24	0.62
<b>2. OIL</b>	<b>250.73</b>	<b>246.05</b>	<b>232.59</b>	<b>256.20</b>	<b>2886.97</b>	<b>2813.18</b>	<b>2780.12</b>	<b>5.78</b>	<b>1.19</b>	<b>-1.87</b>
Assam	226.49	229.00	215.59	237.59	2623.62	2622.49	2568.97	6.22	2.08	1.11
Arunachal Pradesh	5.22	2.31	3.57	2.49	43.68	31.92	44.42	-35.42	-28.15	-55.79
Rajasthan	19.02	14.74	13.43	16.11	219.67	158.77	166.73	9.73	-4.77	-22.51
<b>3. Private / JVC</b>	<b>1257.94</b>	<b>1191.00</b>	<b>906.63</b>	<b>1243.91</b>	<b>13136.14</b>	<b>12787.09</b>	<b>10440.88</b>	<b>31.36</b>	<b>22.47</b>	<b>-5.32</b>
<b>Onshore</b>	<b>242.43</b>	<b>186.10</b>	<b>208.73</b>	<b>192.49</b>	<b>2711.04</b>	<b>2297.53</b>	<b>2455.81</b>	<b>-10.84</b>	<b>-6.45</b>	<b>-23.23</b>
Andhra Pradesh	3.96	1.54	1.10	2.37	30.25	18.22	13.21	40.26	37.94	-61.15
Arunachal Pradesh	0.46	0.37	0.41	0.39	4.98	4.55	4.56	-9.79	-0.27	-20.21
Assam	44.55	24.26	26.05	16.33	404.74	246.19	359.85	-6.87	-31.58	-45.56
Gujarat	7.65	14.00	7.17	14.76	87.39	120.41	78.06	95.42	54.25	82.92
Rajasthan	176.41	143.61	171.79	156.15	2114.73	1883.08	1974.27	-16.40	-4.62	-18.59
Tamil Nadu	9.39	2.32	2.23	2.48	68.95	25.07	25.85	4.09	-3.02	-75.26
<b>CBM</b>	<b>63.38</b>	<b>52.73</b>	<b>50.27</b>	<b>54.78</b>	<b>647.99</b>	<b>593.65</b>	<b>617.68</b>	<b>4.88</b>	<b>-3.89</b>	<b>-16.81</b>
Jharkhand (CBM)	5.33	0.27	0.68	0.24	21.03	5.11	8.35	-60.48	-38.84	-94.95
Madhya Pradesh (CBM)	17.40	18.86	19.48	19.11	214.13	213.51	242.60	-3.21	-11.99	8.38
West Bengal (CBM)	40.65	33.60	30.11	35.43	412.83	375.03	366.73	11.60	2.26	-17.35
<b>Offshore</b>	<b>952.13</b>	<b>952.17</b>	<b>647.63</b>	<b>996.64</b>	<b>9777.11</b>	<b>9895.91</b>	<b>7367.39</b>	<b>47.02</b>	<b>34.32</b>	<b>0.00</b>
Eastern Offshore	921.55	932.35	622.75	976.73	9448.10	9630.33	7105.28	49.72	35.54	1.17
Gujarat Offshore	19.09	16.25	15.55	16.01	196.21	197.95	213.59	4.47	-7.32	-14.89
Western Offshore	11.50	3.57	9.33	3.89	132.81	67.63	48.51	-61.72	39.41	-68.94
<b>TOTAL (1+2+3)</b>	<b>3142.86</b>	<b>2946.72</b>	<b>2651.39</b>	<b>3139.19</b>	<b>34851.00</b>	<b>33299.39</b>	<b>31494.22</b>	<b>11.14</b>	<b>5.73</b>	<b>-6.24</b>
CBM	63.38	52.73	50.27	54.78	647.99	593.65	617.68	4.88	-3.89	-16.81
Onshore	900.85	750.05	806.16	801.05	10172.36	9098.97	9491.25	-6.96	-4.13	-16.74
Offshore	2178.64	2143.94	1794.96	2283.36	24030.65	23606.77	21385.29	19.44	10.39	-1.59

Note: Totals may not tally due to rounding off figures.

\*: Provisional.

\*\*: Revised

Source: Oil &amp; Gas Companies and DGH

Reasons for shortfall are indicated in the note.

## Crude Oil Processed during the month of February, 2024 and cumulatively for the period April-February, 2023-24 vis-à-vis April-February, 2022-23

(Figures in Thousand Metric Tons)										
Name of Undertaking/Unit	Target production during the month*	Production during the			Cumulative Production			% variation		% variation during the month under review over Target production
		Month under review *	Corresponding month of last year	Preceding month of current year **	(April-February)			During the month under review	Upto the end of the period	
					Target production during current year**	Actual production during current year *	Actual production during corresponding period of last year			
(1)	(2)	(3)	(4)	(5)	(6)	(7)	(8)	(9)	(10)	(11)
<b>A. CPSEs Refineries</b>	<b>13312.76</b>	<b>13483.02</b>	<b>13415.61</b>	<b>14398.74</b>	<b>145053.45</b>	<b>150792.18</b>	<b>146673.52</b>	<b>0.50</b>	<b>2.81</b>	<b>1.28</b>
1. IOC, Guwahati	86.74	99.03	86.09	95.74	907.42	886.97	982.86	15.02	-9.76	14.17
2. IOC, Barauni	533.17	541.97	542.97	517.57	6060.06	6011.88	6205.41	-0.18	-3.12	1.65
3. IOC, Gujarat	1235.30	1249.94	1212.84	1191.57	13114.80	13831.77	14220.83	3.06	-2.74	1.19
4. IOC, Haldia	677.90	678.34	665.21	742.02	6895.34	7323.87	7763.97	1.97	-5.67	0.07
5. IOC, Mathura	683.38	793.51	740.61	646.13	8344.70	8289.56	8675.13	7.14	-4.44	16.12
6. IOC, Digboi	58.00	64.69	57.15	68.88	628.00	641.44	653.52	13.21	-1.85	11.54
7. IOC, Panipat	1262.71	693.25	1208.35	1213.87	13336.97	13199.65	12512.18	-42.63	5.49	-45.10
8. IOC, Bongaigaon	204.03	238.90	233.22	251.93	2502.03	2755.89	2517.31	2.43	9.48	17.09
9. IOC, Paradip	1238.62	1271.30	1191.96	1363.85	13976.07	13807.76	12180.49	6.66	13.36	2.64
<b>Total IOC</b>	<b>5979.84</b>	<b>5630.93</b>	<b>5938.40</b>	<b>6091.56</b>	<b>65765.39</b>	<b>66748.79</b>	<b>65711.72</b>	<b>-5.18</b>	<b>1.58</b>	<b>-5.83</b>
10. BPCL, Mumbai	1200.00	1307.15	1293.12	1156.90	13200.00	13590.12	13187.81	1.09	3.05	8.93
11. BPCL, Kochi	1250.00	1203.80	1406.51	1588.22	14435.00	15757.47	14474.88	-14.41	8.86	-3.70
12. BORL, Bina	620.00	663.63	657.05	731.36	6335.00	6500.99	7104.98	1.00	-8.50	7.04
<b>Total BPCL</b>	<b>3070.00</b>	<b>3174.59</b>	<b>3356.68</b>	<b>3476.48</b>	<b>33970.00</b>	<b>35848.58</b>	<b>34767.66</b>	<b>-5.42</b>	<b>3.11</b>	<b>3.41</b>
13. HPCL, Mumbai	753.88	679.65	803.65	853.95	8196.50	9095.19	8930.49	-15.43	1.84	-9.85
14. HPCL, Visakh	1023.78	1254.00	745.84	1180.36	10846.05	11234.31	8412.61	68.13	33.54	22.49
<b>Total HPCL</b>	<b>1777.67</b>	<b>1933.65</b>	<b>1549.49</b>	<b>2034.31</b>	<b>19042.55</b>	<b>20329.50</b>	<b>17343.10</b>	<b>24.79</b>	<b>17.22</b>	<b>8.77</b>
15. CPCL, Manali	870.00	1013.93	927.88	1001.24	9270.00	10569.82	10282.09	9.27	2.80	16.54
16. NRL, Numaligarh	260.00	261.60	244.06	261.67	2523.00	2223.90	2886.34	7.18	-22.95	0.61
17. MRPL, Mangalore	1350.00	1462.33	1392.99	1527.48	14425.00	15011.26	15614.03	4.98	-3.86	8.32
18. ONGC, Tatipaka	5.26	6.01	6.12	6.01	57.51	60.33	68.58	-1.78	-12.03	14.23
<b>B. Private &amp; JVs Refineries</b>	<b>7362.84</b>	<b>7394.09</b>	<b>7432.18</b>	<b>8167.31</b>	<b>84379.35</b>	<b>87250.18</b>	<b>85555.65</b>	<b>-0.51</b>	<b>1.98</b>	<b>0.42</b>
19. HMEL, GGSr, Bhatinda	938.68	884.58	1008.02	851.85	10448.62	11544.52	11624.92	-12.25	-0.69	-5.76
20. RIL, Jamnagar	2575.91	2695.09	2575.91	2966.81	31611.31	31373.79	31611.31	4.63	-0.75	4.63
21. RIL, SEZ	2280.04	2192.13	2280.04	2615.91	25334.17	25737.53	25334.17	-3.86	1.59	-3.86
<b>Total RIL</b>	<b>4855.94</b>	<b>4887.22</b>	<b>4855.94</b>	<b>5582.72</b>	<b>56945.48</b>	<b>57111.32</b>	<b>56945.48</b>	<b>0.64</b>	<b>0.29</b>	<b>0.64</b>
22. NEL, Vadinar	1568.22	1622.29	1568.22	1732.75	16985.25	18594.34	16985.25	3.45	9.47	3.45
<b>Total (A+B)</b>	<b>20675.60</b>	<b>20877.12</b>	<b>20847.79</b>	<b>22566.05</b>	<b>229432.80</b>	<b>238042.36</b>	<b>232229.17</b>	<b>0.14</b>	<b>2.50</b>	<b>0.97</b>

Note: Totals may not tally due to rounding off figures.

\*: Provisional. \*\*: Revised

Reasons for shortfall are indicated in the note.

^: CPCL CBR refinery is under shutdown due to limitation in meeting required Product specifications with the existing configuration.

Source: Oil &amp; Gas Companies

## Refinery-wise Capacity Utilisation during the month of February, 2024 and cumulatively for the period April-February, 2023-24 vis-à-vis April-February, 2022-23

(Figures in Thousand Metric Tons)

Name of Undertaking/Unit	February, 2023			February, 2022			April-February, 2023-24			April-February, 2022-23		
	Prorated Installed Capacity	Actual Crude T'put *	% Utilisation of Installed Capacity	Prorated Installed Capacity	Actual Crude T'put	% Utilisation of Installed Capacity	Prorated Installed Capacity	Actual Crude T'put *	% Utilisation of Installed Capacity	Prorated Installed Capacity	Actual Crude T'put	% Utilisation of Installed Capacity
(1)	(2)	(3)	(4)	(5)	(6)	(7)	(8)	(9)	(10)	(11)	(12)	(13)
<b>A. CPSEs Refineries</b>	<b>12235.00</b>	<b>13483.02</b>	<b>110.20</b>	<b>11638.00</b>	<b>13415.61</b>	<b>115.27</b>	<b>141337.00</b>	<b>150792.18</b>	<b>106.69</b>	<b>138831.00</b>	<b>146673.52</b>	<b>105.65</b>
1. IOC, Guwahati	79.00	99.03	125.35	77.00	86.09	111.81	915.00	886.97	96.94	915.00	982.86	107.42
2. IOC, Barauni	475.00	541.97	114.10	460.00	542.97	118.04	5492.00	6011.88	109.47	5490.00	6205.41	113.03
3. IOC, Gujarat	1086.00	1249.94	115.10	1051.00	1212.84	115.40	12540.00	13831.77	110.30	12536.00	14220.83	113.44
4. IOC, Haldia	634.00	678.34	106.99	614.00	665.21	108.34	7322.00	7323.87	100.03	7321.00	7763.97	106.05
5. IOC, Mathura	634.00	793.51	125.16	614.00	740.61	120.62	7322.00	8289.56	113.21	7321.00	8675.13	118.50
6. IOC, Digboi	52.00	64.69	124.41	50.00	57.15	114.29	595.00	641.44	107.80	595.00	653.52	109.84
7. IOC, Panipat	1189.00	693.25	58.31	1151.00	1208.35	104.98	13730.00	13199.65	96.14	13726.00	12512.18	91.16
8. IOC, Bongaigaon	214.00	238.90	111.63	207.00	233.22	112.67	2471.00	2755.89	111.53	2471.00	2517.31	101.87
9. IOC, Paradip	1189.00	1271.30	106.92	1151.00	1191.96	103.56	13730.00	13807.76	100.57	13726.00	12180.49	88.74
<b>Total IOC</b>	<b>5550.00</b>	<b>5630.93</b>	<b>101.46</b>	<b>5374.00</b>	<b>5938.40</b>	<b>110.50</b>	<b>64117.00</b>	<b>66748.79</b>	<b>104.10</b>	<b>64101.00</b>	<b>65711.72</b>	<b>102.51</b>
10. BPCL, Mumbai	951.00	1307.15	137.45	921.00	1293.12	140.40	10984.00	13590.12	123.73	10981.00	13187.81	120.10
11. BPCL, Kochi	1228.00	1203.80	98.03	1189.00	1406.51	118.29	14187.00	15757.47	111.07	14184.00	14474.88	102.05
12. BORL, Bina	618.00	663.63	107.38	598.00	657.05	109.87	7139.00	6500.99	91.06	7138.00	7104.98	99.54
<b>Total BPCL</b>	<b>2797.00</b>	<b>3174.59</b>	<b>113.50</b>	<b>2708.00</b>	<b>3356.68</b>	<b>123.95</b>	<b>32310.00</b>	<b>35848.58</b>	<b>110.95</b>	<b>32302.00</b>	<b>34767.66</b>	<b>107.63</b>
13. HPCL, Mumbai	753.00	679.65	90.26	729.00	803.65	110.24	8695.00	9095.19	104.60	8693.00	8930.49	102.73
14. HPCL, Visakh	872.00	1254.00	143.81	637.00	745.84	117.09	10068.00	11234.31	111.58	7595.00	8412.61	110.77
<b>Total HPCL</b>	<b>1624.00</b>	<b>1933.65</b>	<b>119.07</b>	<b>1365.00</b>	<b>1549.49</b>	<b>113.52</b>	<b>18764.00</b>	<b>20329.50</b>	<b>108.34</b>	<b>16288.00</b>	<b>17343.10</b>	<b>106.48</b>
15. CPCL, Manali	832.00	1013.93	121.87	805.00	927.88	115.26	9611.00	10569.82	0.00	9608.00	10282.09	107.02
16. NRL, Numaligarh	238.00	261.60	109.91	230.00	244.06	106.11	2746.00	2223.90	80.99	2745.00	2886.34	105.15
17. MRPL, Mangalore	1189.00	1462.33	122.99	1151.00	1392.99	121.02	13730.00	15011.26	109.33	13726.00	15614.03	113.76
18. ONGC, Tatipaka	5.00	6.01	120.18	5.00	6.12	122.36	60.00	60.33	100.55	60.00	68.58	114.30
<b>B. Private &amp; JVs Refineries</b>	<b>7884.00</b>	<b>7394.09</b>	<b>93.79</b>	<b>7633.00</b>	<b>7432.18</b>	<b>97.37</b>	<b>91072.00</b>	<b>87250.18</b>	<b>95.80</b>	<b>91049.00</b>	<b>85555.65</b>	<b>93.97</b>
19. HMEL, GGSR, Bhatinda	895.00	884.58	98.84	867.00	1008.02	116.26	10343.00	11544.52	111.62	10340.00	11624.92	112.43
20. RIL, Jamnagar	2615.00	2695.09	103.06	2532.00	2575.91	101.73	30205.00	31373.79	103.87	30197.00	31611.31	104.68
21. RIL, SEZ	2789.00	2192.13	78.60	2700.00	2280.04	84.45	32219.00	25737.53	79.88	32210.00	25334.17	78.65
<b>Total RIL</b>	<b>5404.00</b>	<b>4887.22</b>	<b>90.44</b>	<b>5232.00</b>	<b>4855.94</b>	<b>92.81</b>	<b>62423.00</b>	<b>57111.32</b>	<b>91.49</b>	<b>62408.00</b>	<b>56945.48</b>	<b>91.25</b>
22. NEL, Vadinar	1585.00	1622.29	102.35	1534.00	1568.22	102.23	18306.00	18594.34	101.58	18301.00	16985.25	92.81
<b>Total (A+B)</b>	<b>20119.00</b>	<b>20877.12</b>	<b>103.77</b>	<b>19271.00</b>	<b>20847.79</b>	<b>108.18</b>	<b>232409.00</b>	<b>238042.36</b>	<b>102.42</b>	<b>229880.00</b>	<b>232229.17</b>	<b>101.02</b>

Note: Crude throughput in terms of crude oil processed. \*: Provisional. \*\*: Revised ^: CPCL CBR refinery is under shutdown due to limitation in meeting required Product specifications with the existing configuration.

Source: Oil & Gas Companies