



CAPITAL MARKETS DAY

Hindustan Zinc

March 2015

Cautionary Statement and Disclaimer



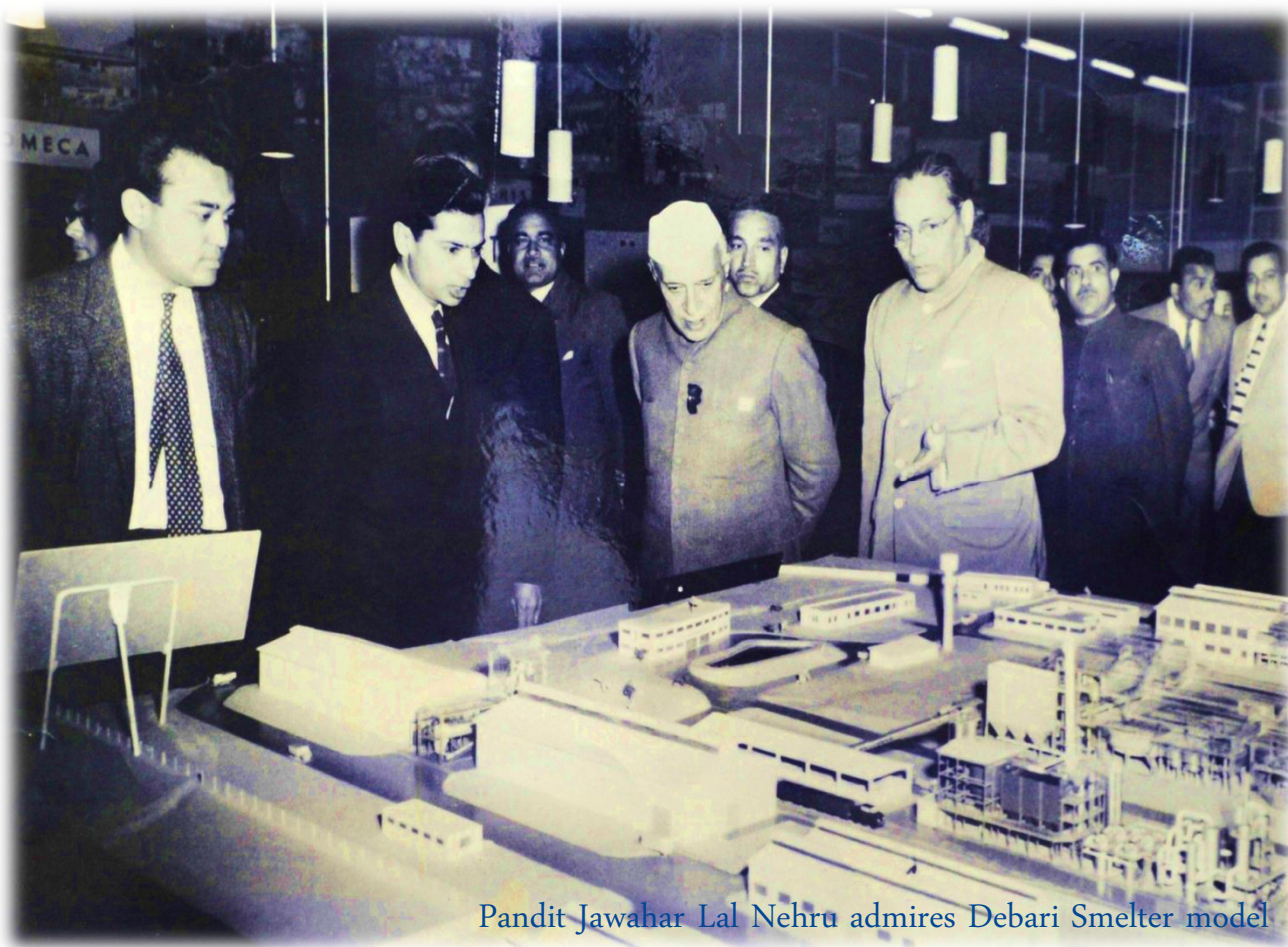
The views expressed here may contain information derived from publicly available sources that have not been independently verified.

No representation or warranty is made as to the accuracy, completeness, reasonableness or reliability of this information. Any forward looking information in this presentation including, without limitation, any tables, charts and/or graphs, has been prepared on the basis of a number of assumptions which may prove to be incorrect. This presentation should not be relied upon as a recommendation or forecast by Vedanta Resources plc ("Vedanta"). Past performance of Vedanta cannot be relied upon as a guide to future performance.

This presentation contains 'forward-looking statements' – that is, statements related to future, not past, events. In this context, forward-looking statements often address our expected future business and financial performance, and often contain words such as 'expects,' 'anticipates,' 'intends,' 'plans,' 'believes,' 'seeks,' or 'will.' Forward-looking statements by their nature address matters that are, to different degrees, uncertain. For us, uncertainties arise from the behaviour of financial and metals markets including the London Metal Exchange, fluctuations in interest and or exchange rates and metal prices; from future integration of acquired businesses; and from numerous other matters of national, regional and global scale, including those of a environmental, climatic, natural, political, economic, business, competitive or regulatory nature. These uncertainties may cause our actual future results to be materially different that those expressed in our forward-looking statements. We do not undertake to update our forward-looking statements.

This presentation is not intended, and does not, constitute or form part of any offer, invitation or the solicitation of an offer to purchase, otherwise acquire, subscribe for, sell or otherwise dispose of, any securities in Vedanta or any of its subsidiary undertakings or any other invitation or inducement to engage in investment activities, nor shall this presentation (or any part of it) nor the fact of its distribution form the basis of, or be relied on in connection with, any contract or investment decision.

Hindustan Zinc - A Sustainable Enterprise



Pandit Jawahar Lal Nehru admires Debari Smelter model

Rampura Agucha: **Largest** zinc mine globally

2nd Largest zinc-lead miner globally with **10 million+ MT** of ore production capacity

4th Largest zinc-lead smelter globally: **1 million+ MT** of production capacity

R&R base of **365.1 million MT**: mine life of **25+ years**

A **Journey** towards **Excellence** - **15 million MT** Ore Production Capacity & **1.2 million MT** MIC production capacity from **Underground Mines**

Rankings calculated from Wood Mackenzie LTO Q4 2014

Safety

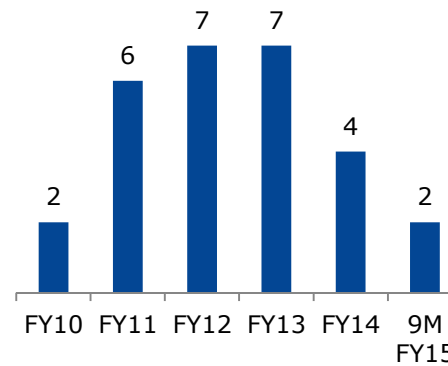
Zero harm to people, host communities and environment

- Safety cultural transformation journey from reactive to interdependent; engagement with “Dupont”
- Integrated safety organisation structure
- Promoting behaviour based safety
- Focus on hazard identification & near misses

Sustainability Initiatives

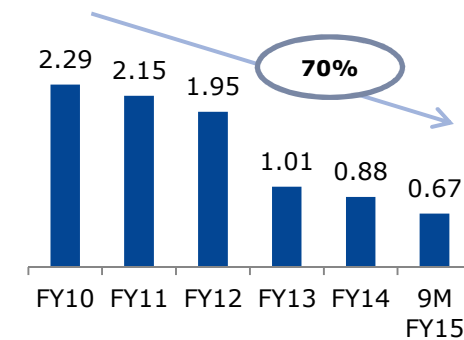
- Zero water discharge
- Adiabatic cooling towers
- Sewage treatment plant as sustainable water source
- Green energy of 309MW
- Bio-diversity conservation

Fatalities



LTIFR

(per million man-hours worked)



Safety Pledge during mine safety week



Portfolio of Tier - 1 Assets



Rampura Agucha Mine

Reserves : 57.5mt
 Resources : 51.9mt
 Reserve Grade : Zn 13.7%, Pb 1.8%
 Current Ore Capacity : 6.15 mtpa

Kayad Mine

Reserves : 6.2mt
 Resources : 1.5mt
 Reserve Grade : Zn 10.4%, Pb 1.5%
 Current Ore Capacity : 0.35 mtpa

Sindesar Khurd Mine

Reserves : 20.4mt
 Resources : 78.7mt
 Reserve Grade : Zn 4.6%, Pb 2.6%
 Current Ore Capacity : 2.0 mtpa

Rajpura Dariba Mine

Reserves : 10.0mt
 Resources : 44.3mt
 Reserve Grade : Zn 6.4%, Pb 1.6%
 Current Ore Capacity : 0.90 mtpa

Zawar Mining Complex

Reserves : 9.9mt
 Resources : 68.5mt
 Reserve Grade : Zn 3.8%, Pb 1.9%
 Current Ore Capacity : 1.2 mtpa
 CPP : 80MW

Chanderiya Smelting Complex

Pyrometallurgical Lead Zinc Smelter: 105,000 tpa Zinc and 35,000 tpa Lead
 Hydrometallurgical Zinc Smelter: 420,000 tpa Zinc
 Ausmelt™ Lead Smelter: 50,000 tpa Lead
 Captive Power Plant: 234MW

Dariba Smelting Complex

Hydrometallurgical Zinc Smelter: 210,000 tpa Zinc
 Lead Smelter: 100,000 tpa Lead
 Captive Power Plant: 160MW

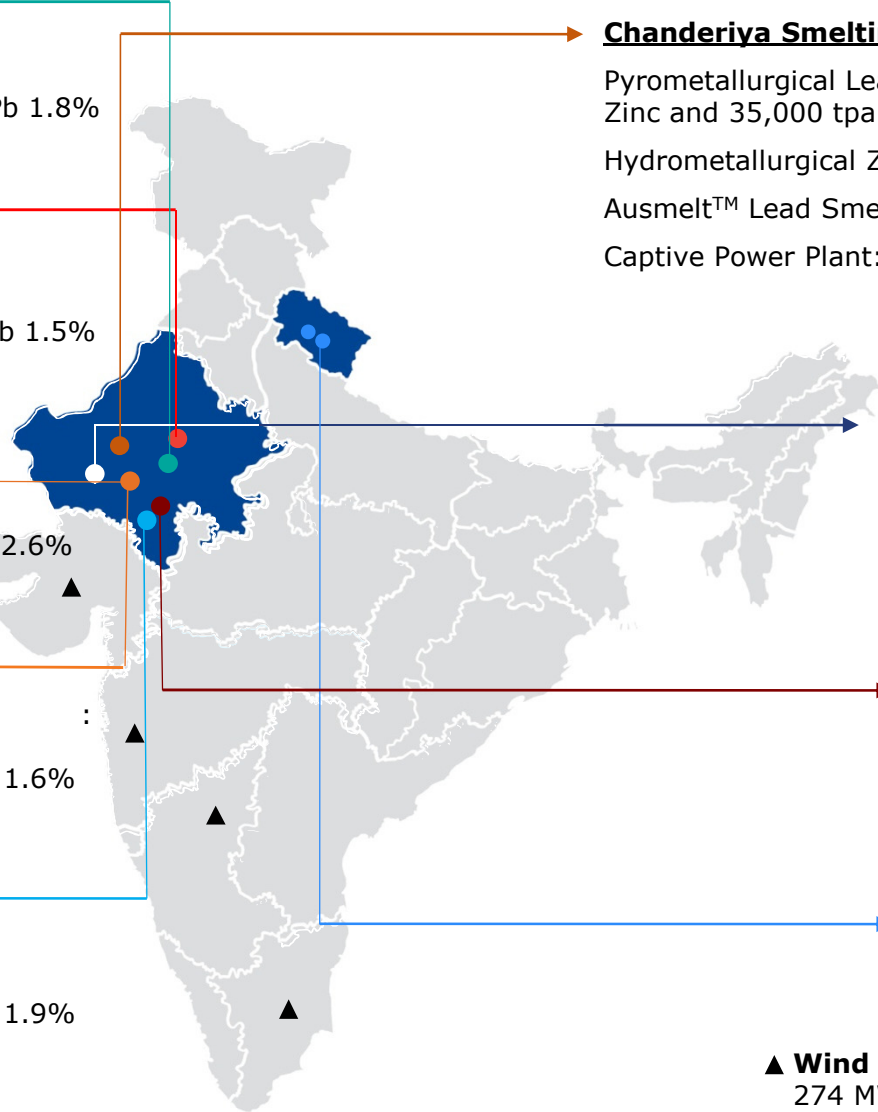
Zinc Smelter Debari

Hydrometallurgical Zinc Smelter: 88,000 tpa Zinc

Pantnagar & Haridwar

Processing & Refining of Zinc, Lead & Silver

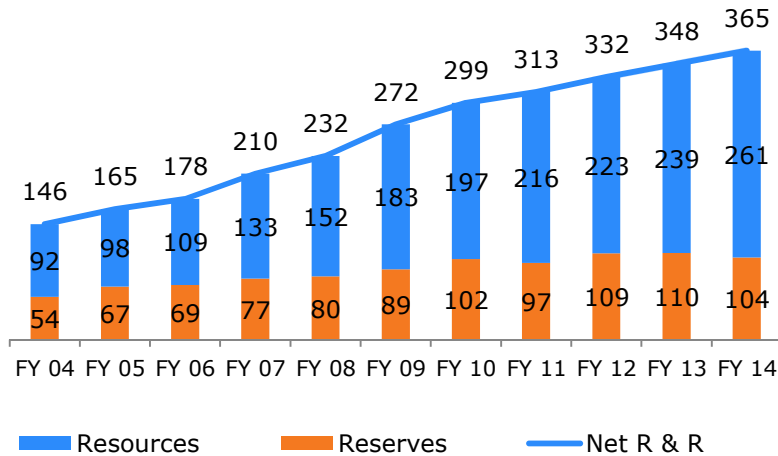
▲ **Wind Power** Generation Capacity of 274 MW



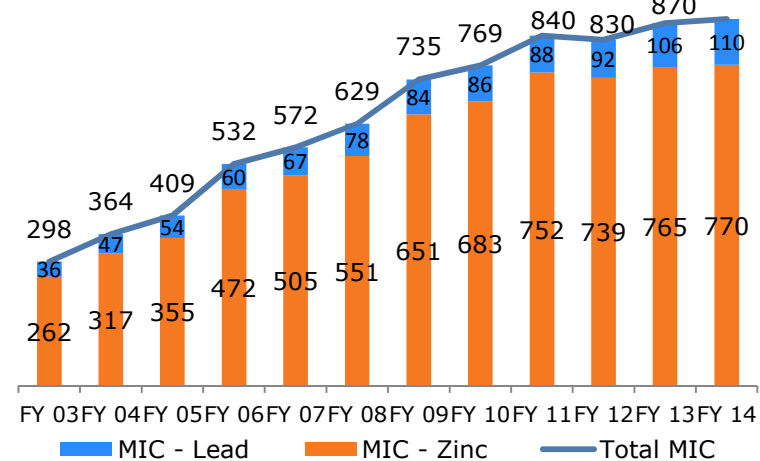
Strong Track Record of Growth



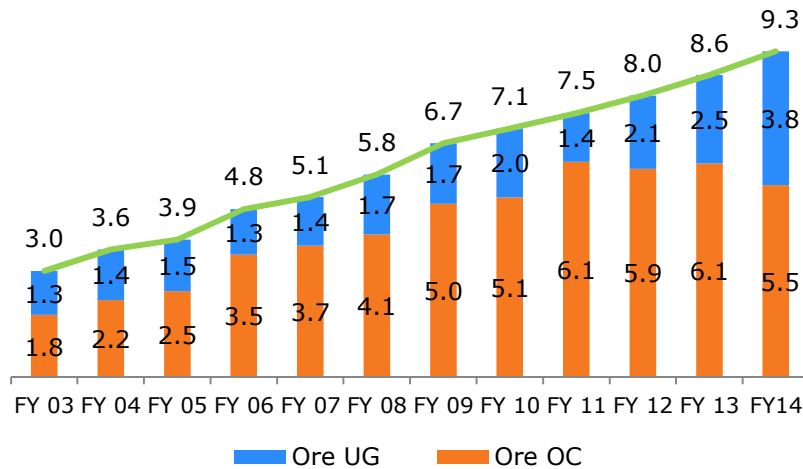
Reserves & Resources (mt) – 2.5X Growth



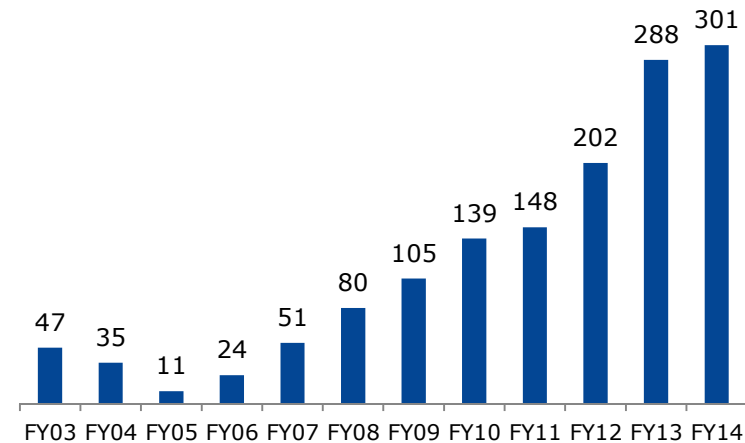
Mined metal (kt) – 3X Growth



Ore Production (mt) – 3X Growth



Silver Metal – Integrated Saleable (MT) – 6X Growth

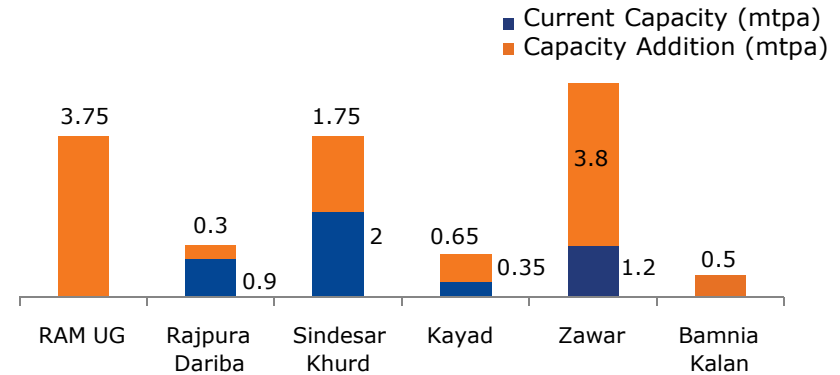


Expansion Projects

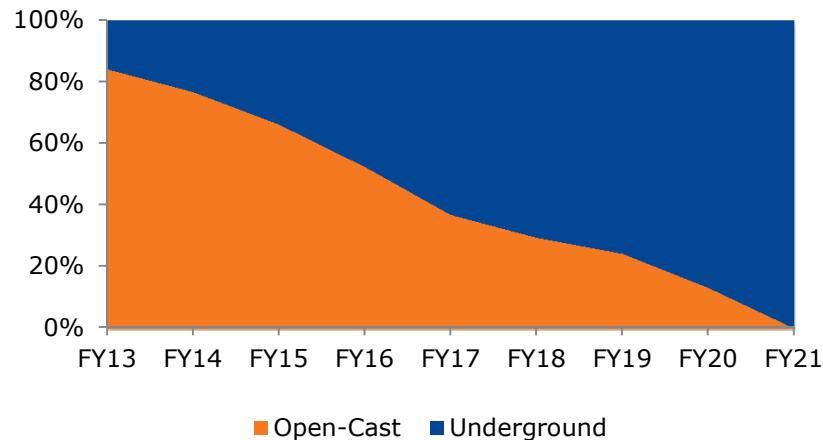


- Resource driven growth
- Six major projects to increase mined metal capacity by 20% to 1.2 mtpa, including replacement from RAM OC
- Total capex of \$1.5 billion, out of which ~\$0.5 bn is spent
- Expansion of mines in sync with increasing R&R
- Extension of RAM OC mine life to FY20 to smoothen transition to UG

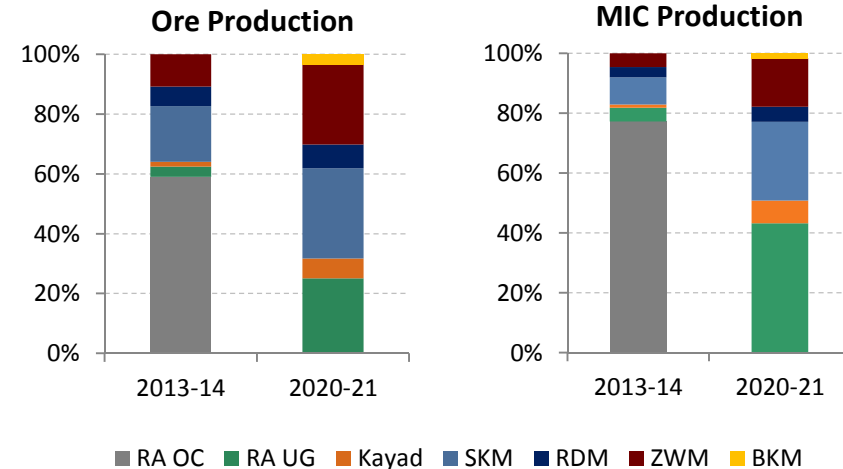
Projects



Transition to underground mining (% share in MIC)



Future mine production profile



Rampura Agucha Mine



Open Pit

Ultimate Pit Depth: 420 meters from surface

Mine Life: FY 2019-20

UG Mine

Production Capacity: 3.75 mtpa

Mine Life: +20 years

R&R: 44.7 mn MT & 51.9 mn MT

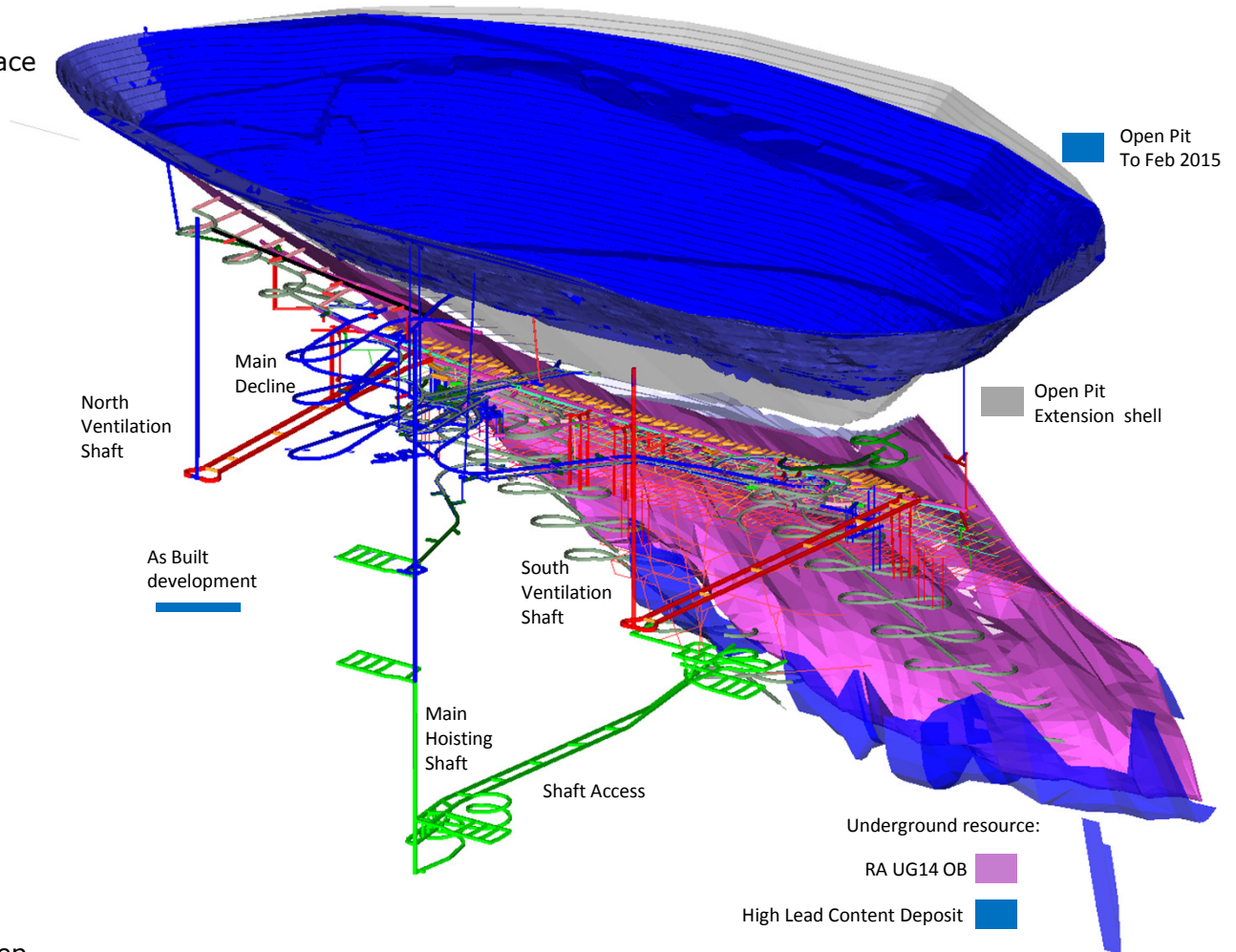
Mining Method: LHS with paste fill

Major Activities:

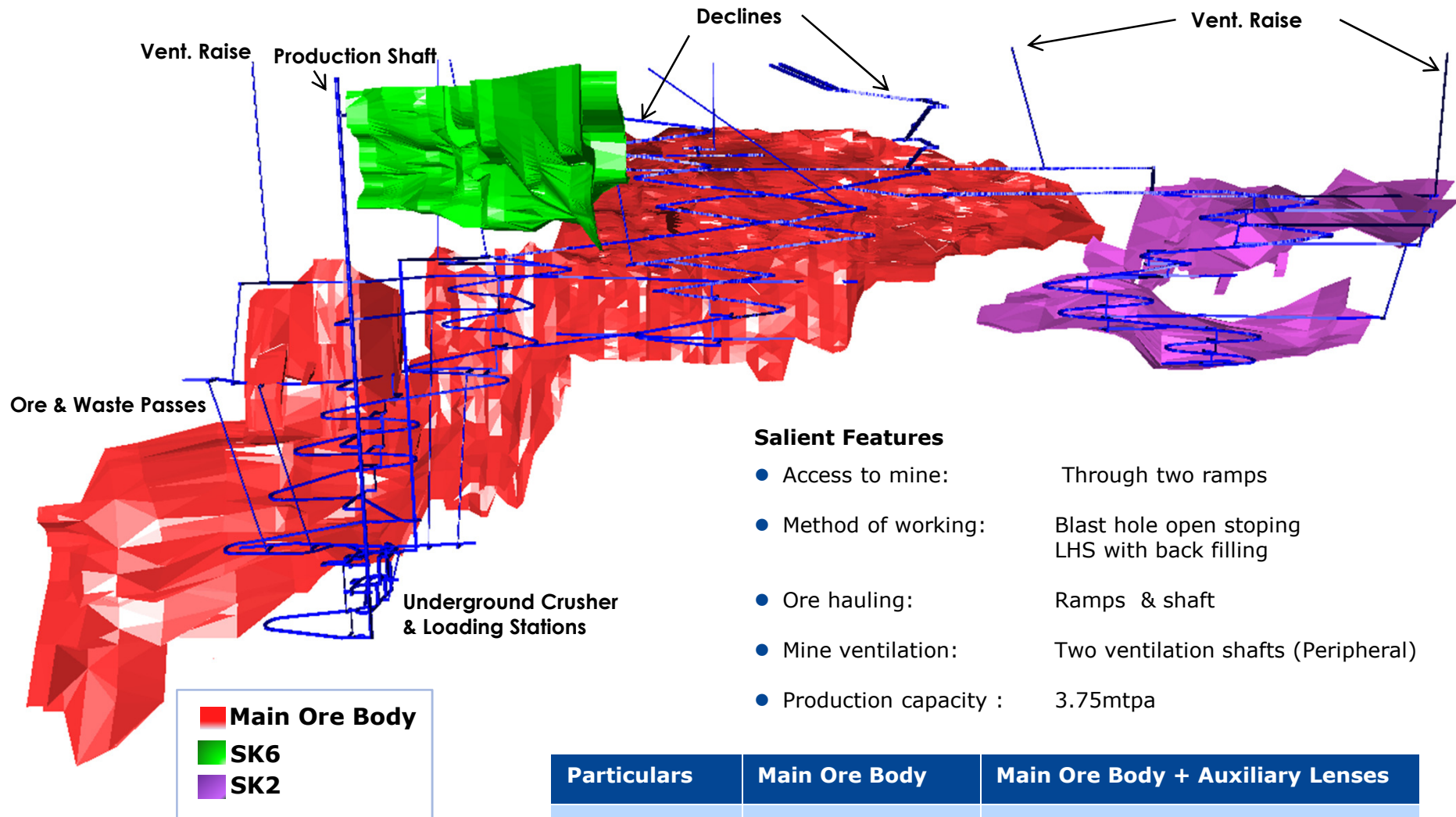
- Decline and ancillary development
- Production shaft & crusher system
- Raise boring
- Paste fill plant
- Surface infrastructures

Shaft

- Hoisting Capacity: 3.75 mtpa
- Shaft Dimension: 7.5 m Dia., 950m deep



Sindesar Khurd Mine



Salient Features

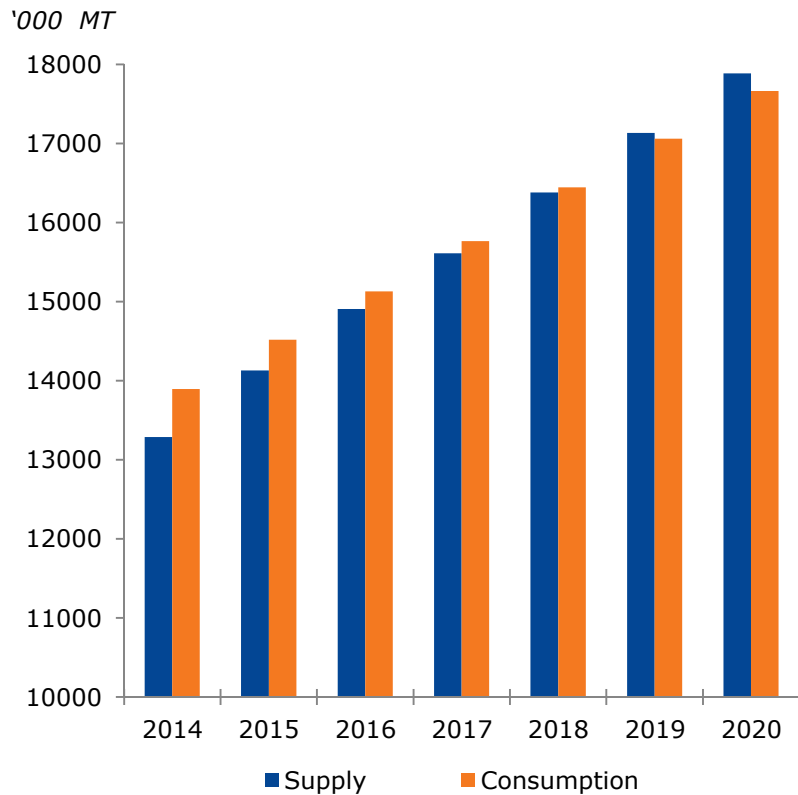
- Access to mine: Through two ramps
- Method of working: Blast hole open stoping LHS with back filling
- Ore hauling: Ramps & shaft
- Mine ventilation: Two ventilation shafts (Peripheral)
- Production capacity : 3.75mtpa

Particulars	Main Ore Body	Main Ore Body + Auxiliary Lenses
R&R	37 mn tonnes	99 mn tonnes
Capacity	2 mtpa	3.75 mtpa

Global Refined Zinc Market Overview



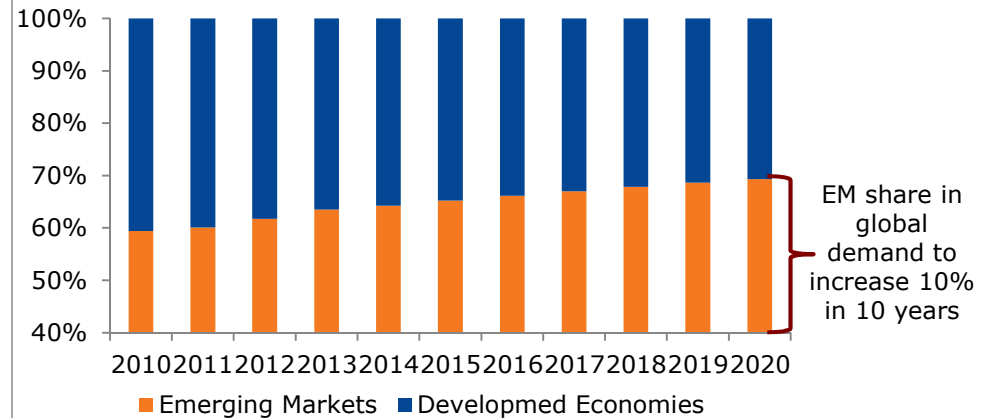
Refined Market Balance



Source: Wood Mackenzie LTO Q4 2014

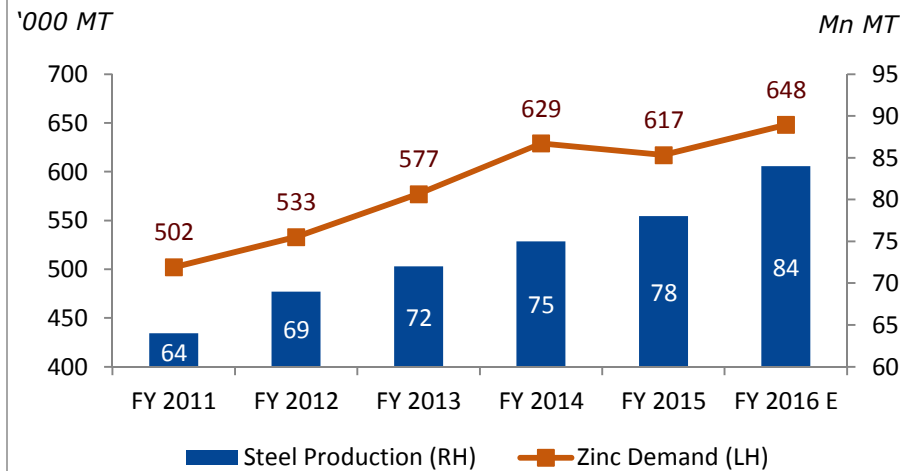
World - Steady demand growth at 4-5%
China - CAGR (2013-2020) 6.2%
India - CAGR (2013-2020) 5.7%

Emerging Markets Driving Demand



Source: Wood Mackenzie LTO Q4 2014

India Steel Production and Zinc Demand

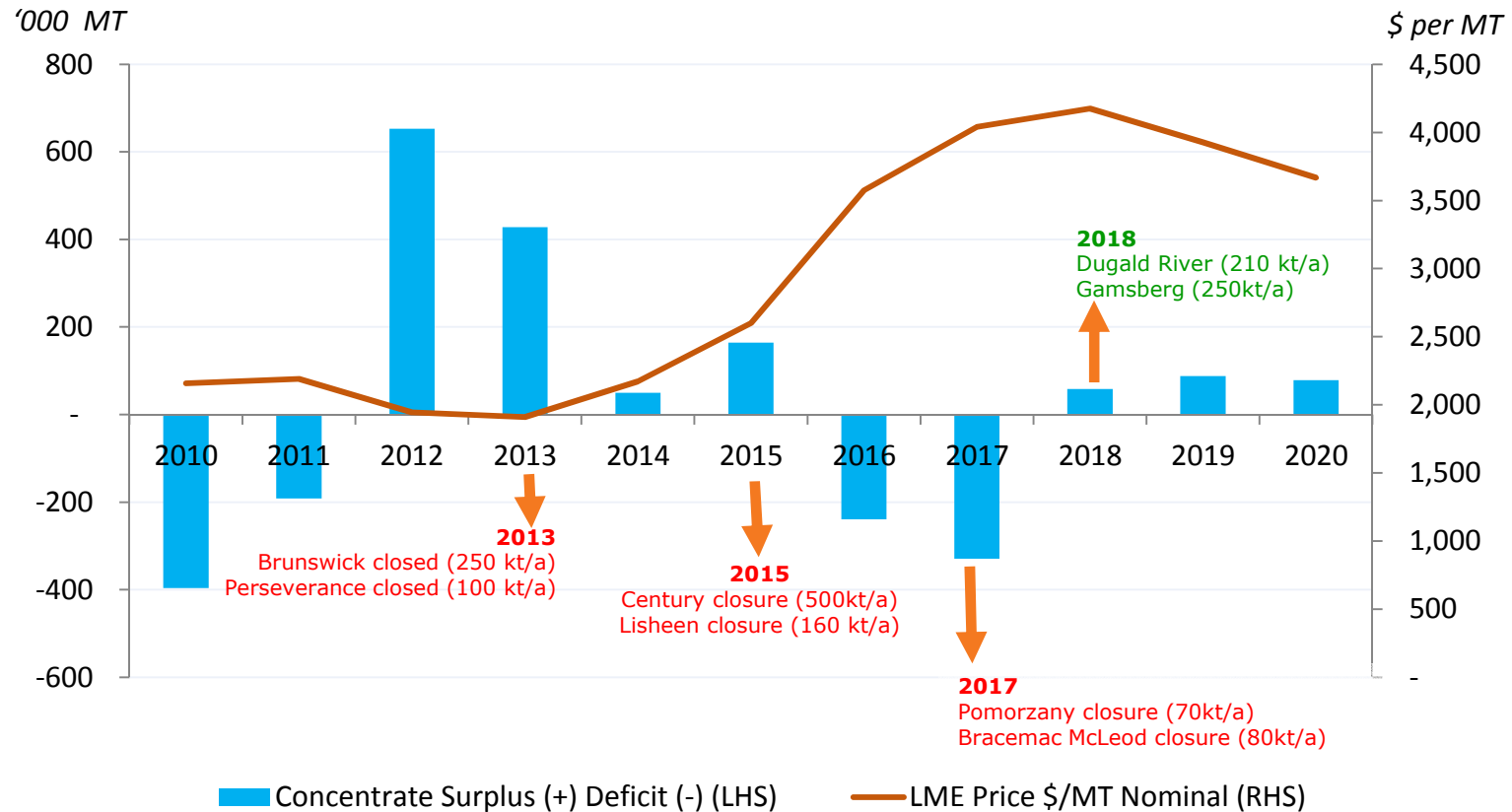


Source: Feedback Consulting & HZL

Mine Production Outlook



Concentrate Deficit to Support Price



Source: Wood Mackenzie LTO Q4 2014

Leading the way with fully integrated operations

Core Strengths

- 1

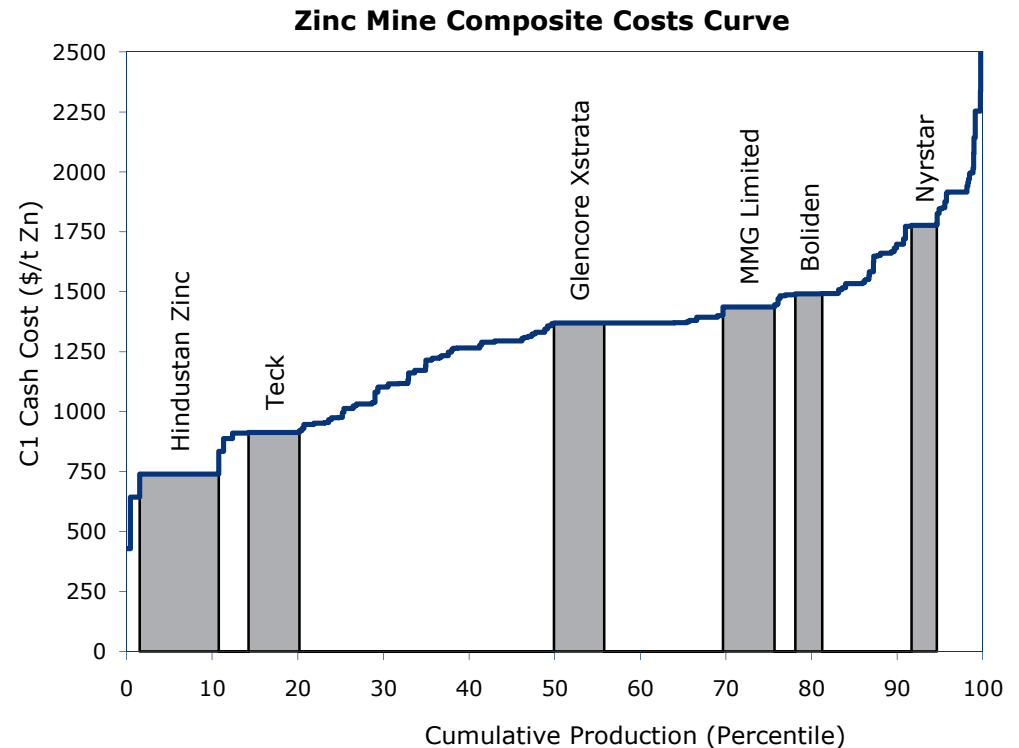
Captive mines with R&R base of 365.1 million MT ensuring mine life of 25 years
- 2

Integrated metal production supported by captive power plants
- 3

Low cost of operations driven by quality assets and waste recovery
- 4

Market leadership in India with strong presence in emerging economies of Asia

Among the lowest cost producers of zinc



Source: Wood Mackenzie Research



 **Thank You** 