



K.P. ENERGY LIMITED

CIN: L40100GJ2010PLC059169



KPEL/INV/PPT/Q1FY26/575

Date: August 5, 2025

BSE Limited

Phiroze Jeejeebhoy Towers,
Dalal Street,
Mumbai - 400001

National Stock Exchange of India Limited

Exchange Plaza,
Bandra Kurla Complex,
Bandra (E), Mumbai – 400051

Scrip Code: 539686

Symbol: KPEL

Sub: Investor Presentation for the quarter ended June 30, 2025

Dear Sir,

Apropos the captioned subject, please find attached herewith the Investor Presentation for the quarter ended June 30, 2025.

The aforementioned presentation is also made available on website of the company at www.kpenergy.in

This is for your information and records.

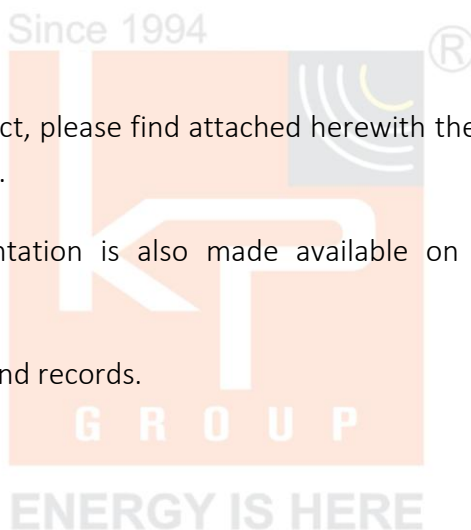
Thanking You,

Yours faithfully,

For K.P. Energy Limited

Affan Faruk Patel
Whole Time Director
DIN: 08576337

Encl.: a/a



Reg. Office:

'KP House', Near KP Circle, Opp. Ishwar Farm Junction BRTS,
Canal Road, Bhatar, Surat-395017, Gujarat

Phone: +91-261-2234757, Fax: +91-261-2234757

E-mail: info@kpenergy.in, Website: www.kpenergy.in

ISO 14001:2015, ISO 9001:2015 and ISO 45001: 2018 Certified Company

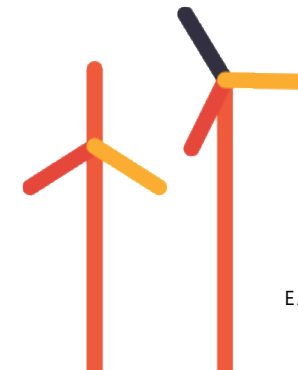
NSE BSE Listed Company



KP Energy Limited

Earnings Presentation

Q1 FY2026



Inside the Presentation

Highlights

| | |
|----------------------------------|----|
| Company Snapshot | 03 |
| Wide Client Coverage | 04 |
| FY25 Financial Highlights | 05 |
| FY25 Financial Highlights (US\$) | 06 |
| Income Statement Summary | 07 |

Growth Strategy

| | |
|--|----|
| Growth Avenues | 08 |
| Inhouse Wind Resource Assessment Capabilities | 09 |
| Network Operations Centre | 10 |
| Future Areas of Growth: Offshore wind | 11 |
| Recent Highlights and Recognition | 12 |

Management

| | |
|--------------------|----|
| Board of Directors | 13 |
| Key Personnel | 14 |

Company Overview

| | |
|------------------------|----|
| Company Overview | 15 |
| Business Model | 16 |
| EPCC Scope of Services | 17 |
| Market Statistics | 18 |

About KP Group

| | |
|--|----|
| KP Group Key Entities | 19 |
| About KP Group | 20 |
| Humanitarian Services – Driven by Passion, Not Obligation | 21 |
| Vision | 24 |
| Contact Us | 25 |
| Disclaimer | 26 |

Company Snapshot

KP Energy Limited is a prominent balance of plant solution provider in renewable energy industry engaged, from conceptualization till the commissioning of wind energy & wind-solar hybrid power projects.

 **Matalpar Wind Site**



3.26+ GW

Total renewable portfolio

2.22+ GW

Projects in Hand

1.05+ GW

Capacity installed till date including CTU and STU projects*

48.5 MW

Our own operational IPP assets

595+ MW

Total O&M Portfolio

10+ GW

Ambitious Group target by 2030

KP Energy OMS

O&M services for BOP infrastructure are managed under wholly-owned subsidiary KP Energy OMS Limited ensuring the optimal performance and minimal down time

Technology Resilient

Working with major OEMs in India for Wind Turbine Generator (WTG) of various capacities currently up to 4.2 MW each

₹ 3,381 CR

Market Capitalization as of Aug 4, 2025

Listed

BSE Scrip Code: 539686
NSE Symbol: KPEL



Wide Client Coverage



Repeat Business Potential

With more than a decade of execution experience, building trust, winning repeat contracts and bundling capacities across sites.



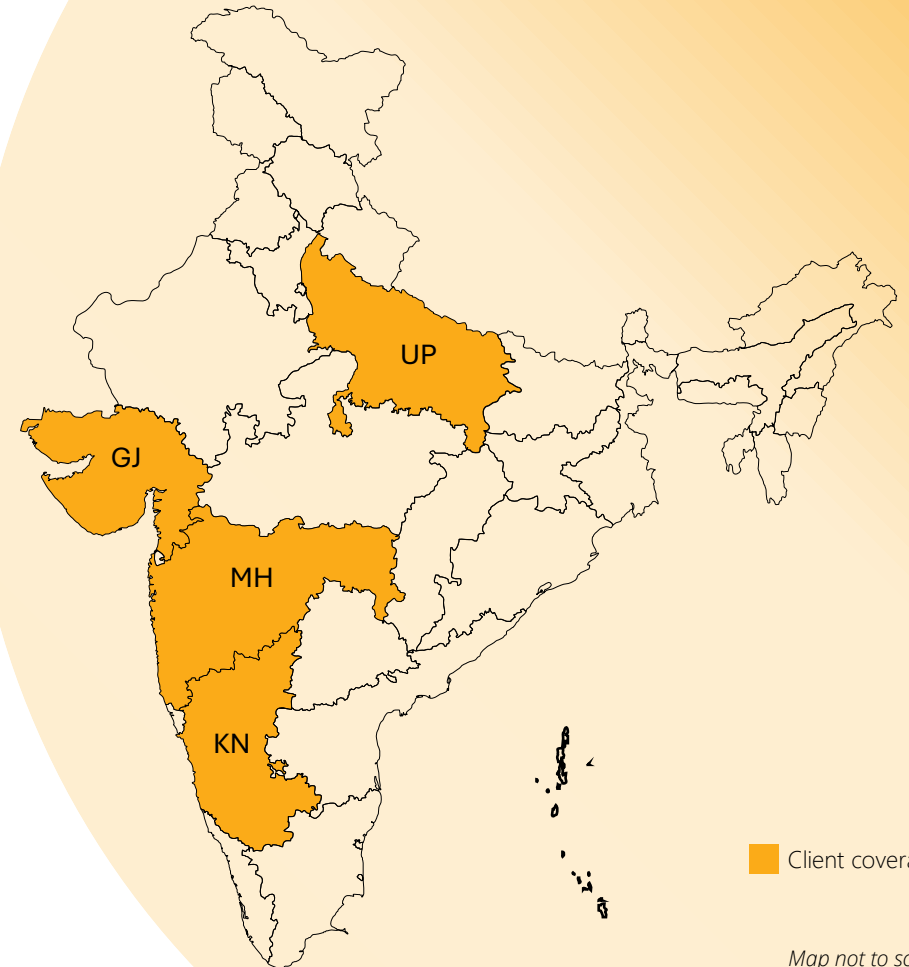
Operational Efficiency

Centralized wind farms benefit from economies of scale while reducing downtime and increasing performance.



Pan India Expansion

Strategic acquisition of ISTS and STU connectivity to initiate scalable projects across India



Client coverage

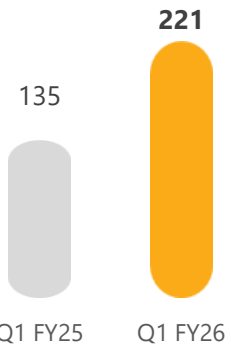
Map not to scale

Q1 FY 2026 Financial Highlights (in ₹)

Total Income

(₹ IN CRORES)

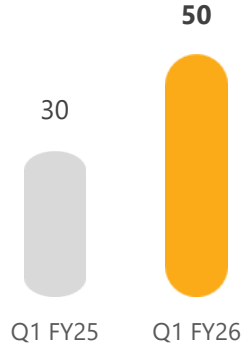
+63% YOY



EBITDA

(₹ IN CRORES)

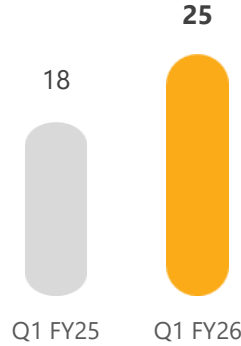
+63% YOY



PAT

(₹ IN CRORES)

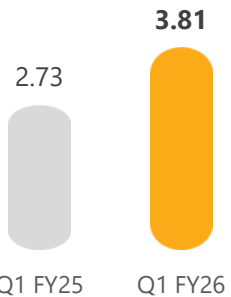
+40% YOY



EPS

(₹ / SHARE)

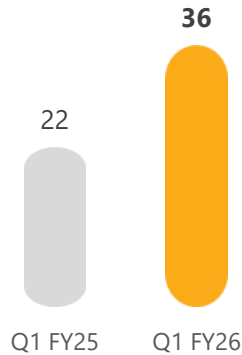
+39% YOY



Cash Profit

(₹ IN CRORES)

+60% YOY



Note: The figures for Revenue, EBITDA, PAT and Cash Profit have been rounded to the nearest integer. Percentage growth has been calculated based on absolute values.



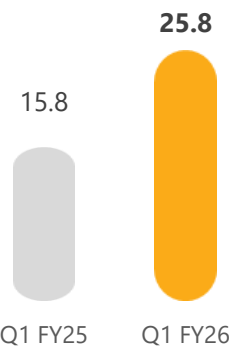
**Bhungar
Hybrid Site**

Q1 FY26 Financial Highlights (in US \$)

Total Income

(in MM US \$)

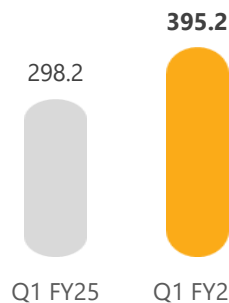
+63% YOY



Market Cap

(in MM US \$)

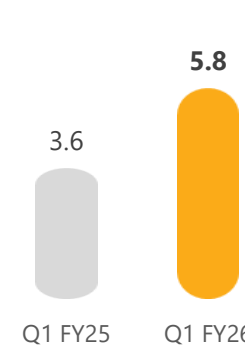
+33% YOY



EBITDA

(in MM US \$)

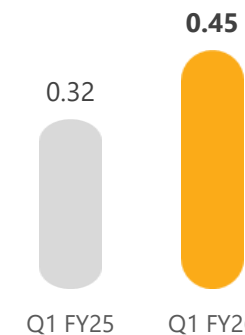
+63% YOY



EPS

(US \$ / SHARE)

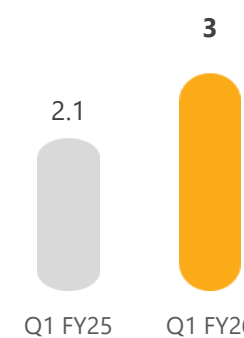
+39% YOY



PAT

(in MM US \$)

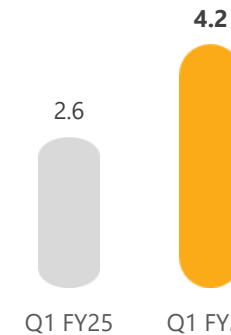
+40% YOY



Cash Profit

(in MM US \$)

+60% YOY



Note:

1. All figures are converted from INR to USD at a rate of 1 USD = INR 85.5439, as taken on 30 June 2025
2. Market cap taken on 14 August 2024 (Q1 FY25) and 4 August 2025 (Q1 FY26)
3. The figures for Revenue, EBITDA, PAT, Market Cap and Cash Profit have been rounded to 1 decimal point. Percentage growth has been calculated based on absolute values.

 Dwarka Wind Site

Income Statement Summary

(Consolidated)

| Particulars (₹ Crores) | Q1 FY26 | Q1 FY25 | YoY % Change |
|-------------------------------|-------------|-------------|-----------------|
| Revenue From Operations | 219 | 127 | 73% |
| Total Income | 221 | 135 | 63% |
| Total Operating Expenses | 171 | 105 | 63% |
| EBITDA | 50 | 30 | 63% |
| Interest Cost | 9 | 5 | 93% |
| Depreciation And Amortisation | 6 | 2 | 126% |
| Profit Before Taxes | 35 | 23 | 50% |
| Profit After Taxes | 25 | 18 | 40% |
| Basic EPS (₹) | 3.81 | 2.73 | 39% |

Note: All figures, except EPS, have been rounded to the nearest integer. Percentage growth has been calculated based on absolute values.

73%



Q1 FY26 Revenue from Operations at **₹219 Crore** as compared to **₹127 Crore** in Q1 FY25

63%



Q1 FY26 EBITDA at **₹50 Crore** as compared to **₹30 Crore** in Q1 FY25

50%



Q1 FY26 PBT at **₹35 Crore** as compared to **₹23 Crore** in Q1 FY25

Growth Avenues

Resource Creation & Pipeline



- With over 2GW of multi-year orders in pipeline, it allows us to focus in high growth and innovative sectors.
- BOP initiative undertaken to explore offshore wind to the tune of 1-2 GW in Gujarat/Tamil Nadu in terms of BOP participation
- Received in-principle approval for 100MW ISTS Connectivity, enabling interstate sales; exploring further ISTS and STU connectivity

Grid Reach & Site Quality



- Expertise across STU and CTU networks diversifies evacuation pathways and broadens customer reach for renewable power contracts.
- Through internal Wind Resource Assessment capabilities, expertise in early detection of high wind land resources speeds up project development
- Better technology initiatives/higher PLF achievability through 4.x and 5.x MW WTGs

Operational Excellence



- 24x7 Network Operations Center uses AI alerts and SCADA dashboards to deploy preventive maintenance teams, reducing downtime and ensuring generation reliability.
- Integrated O&M covers growth avenues through performance optimisation, predictive maintenance and lifecycle extension of critical infrastructure.

Inhouse Wind Resource Assessment Capabilities

Our in-house Wind Resource Assessment capabilities deliver accurate, high-resolution wind data analysis using advanced modeling tools, on-site measurements, and GIS mapping. We optimize site selection, energy yield estimation, and project bankability. Our expert team ensures reliable insights to support efficient wind farm design and maximize renewable energy generation potential.

Features and benefits of Inhouse WRA team include:

- High-Resolution Data Collection
- Enhanced Site Suitability Analysis
- Faster turnaround time for analysis
- Robust Power Curve Measurements
- Advanced Data Analytics
- Versatile Wind Data Exploration

Key Assets for Wind Resource Assessment Team:

- Expert Team for Wind and land resource analysis
- Wind Masts installed across the region
- LiDAR wind cube
- Cutting edge software for wind mapping
- Member of Indian Wind Power Association



Network Operation Centre

Key Capabilities of KP Group's Network Operations Centre (NOC)



Live Equipment Health Monitoring

Integrated through SCADA – enables Real-time tracking of key equipment like Inverters, WTGs and Weather Monitoring Systems (WMS). Ensures maximum uptime and immediate fault detection.



Custom Alert Systems and Auto Reporting

Automated alerts for critical deviations and performance issues. Generates daily, weekly, and exception reports for actionable insights.



Powered by IBM Maximo Renewables

Our NOC platform is built on IBM Maximo for Renewables. IBM has published a global case study recognizing KP Group's NOC as a benchmark for digital operations in renewable energy.

A centralised command hub for real-time monitoring, diagnostics, and control of KP Group's solar and wind assets.



200+

Clients

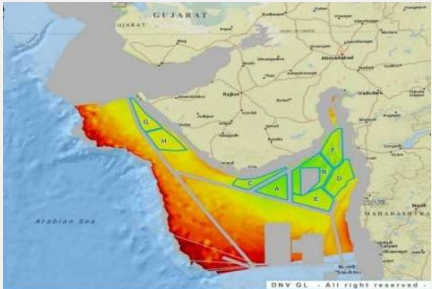
100%

O&M Contractual Compliance

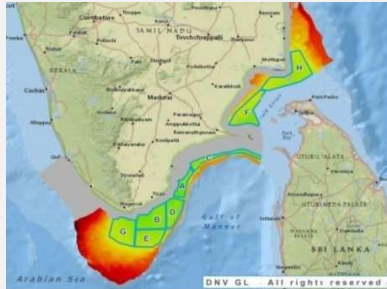
Future Areas of Growth : Offshore wind

Potential Locations for Offshore Wind

National Institute of Wind Energy (NIWE), has identified four regions in the two states.



Gujarat



Tamil Nadu

Government Incentives

- VGF of up to INR 7,453 Crs for 1 GW
- Allocation of offshore wind sites under a lease with site exclusivity over seabed during study/survey period and project
- Tenders released in Gujarat and Tamil Nadu

Why Offshore Wind in India?

Vast Untapped Potential

70 GW offshore wind energy potential in India

Higher PLF & Consistent winds

45-50% PLF as compared to 30-35% of onshore wind

Min. Land Required

Compared to onshore, minimal land required for offshore wind

RTC Power

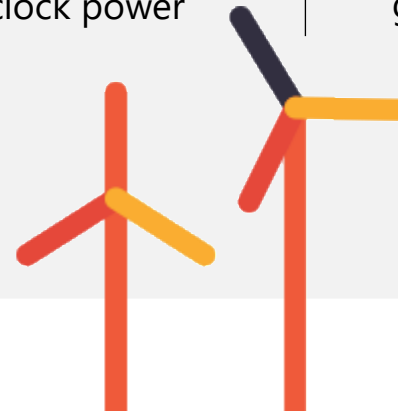
Offshore wind is a key component for Round-the-clock power

Global Opportunities

73 GW + offshore wind installed globally

Near-Shore Wind

Near-shore wind can serve as a potential new market



Recent Highlights and Recognition



KP Group continues its partnership with IIM Ahmedabad for Leadership Excellence Program

KP Group was invited for the Madhya Pradesh Government's Roadshow in Surat, Gujarat

- KP Energy was listed on the main board of National Stock Exchange (NSE)
- KP Energy Limited has been awarded as an Outstanding company in Renewable Energy EPC by EPC World Media Group, in New Delhi
- KP Group's third consecutive recognition as the 'Best Brand of 2024' reflects its commitment to excellence and innovation
- Mr. Affan Faruk Patel Named among 50 most powerful Business Leaders
- KP Energy Limited is proudly awarded as Business Excellence Awards - Company of the Year: EPC Solutions in Wind at by India Wind Energy Forum Leadership Awards 2024



Porbandar
Wind Site

Board of Directors



Dr. Faruk G. Patel

MANAGING DIRECTOR



Mr. Affan Patel

WHOLE-TIME DIRECTOR



Mr. Amit Khandelwal

WHOLE-TIME DIRECTOR



Adv. Bhadrabala Joshi

NON-EXECUTIVE DIRECTOR



**Dr. Neethimani
Karunamoorthy**

INDEPENDENT DIRECTOR



**Mr. Dukhabandhu
Rath**

INDEPENDENT DIRECTOR



Ms. Venu Birappa
NON-EXECUTIVE DIRECTOR
(EX-GETCO OFFICER)



CA Rajendra Desai
INDEPENDENT DIRECTOR



Mr. Bhupendra Shah
NON-EXECUTIVE DIRECTOR

Key Personnel



Dr. Alok Das

GROUP CEO



Mr. Manoj Mishra

HEAD - CORPORATE
AFFAIRS



CA Shabana Bajari

CHIEF FINANCIAL OFFICER



CS Karmit Sheth

COMPANY SECRETARY &
COMPLIANCE OFFICER



Mr. AK Rao

GENERAL MANAGER



Ms. Nilam Desai

GENERAL MANAGER
PROJECTS



Dr. Janak Modi

HEAD – OPERATIONS



Major Unmesh Bhatt

VP PROJECTS



Jatinder Singh Bedi

AIR COMMODORE
(IAF VETERAN)

Company Overview

As the leading end-to-end Wind energy solutions provider since 2010, we are constantly working to reshape the energy landscape. We provide a smooth and all-inclusive solution that covers utility-scale renewable energy project development from concept to completion.

Being one of the few specialized companies in wind and hybrid renewable energy industry, we offer a unique blend of experience, creativity, and knowledge to every project. We are one of the few businesses that are prepared to lead in wind and hybrid renewable energy, offering state-of-the-art solutions in a rapidly evolving sector.



 **Bhavnagar
Switch Yard**

Business Model

EPCC

KPEL offers a unique value proposition that has been designed to address all the issues that WTG manufacturers, IPPs, and CPPs face when setting up a wind farm. We provide end-to-end BOP solutions for Wind Farm & Wind-Solar Hybrid Projects, from concept to commissioning.

Value Delivered

KPEL acts as a one-stop solution provider for its clients, the entire responsibility and accountability for execution of utility-scale Wind Farm & Wind-Solar Hybrid Projects undertaken by the Company.

Outcome

Projects are executed on-time and with optimal resources.

IPP

The Company has its own IPP portfolio of 48.5 MW which includes 37 MW wind generation assets, 11.5 MW DC solar power projects.

Value Delivered

Recurring, annuity revenue stream for the Company.

Outcome

Complementing stable cash flows from our annuity revenue stream of IPP strengthens the resilience of our overall business model.

(In Crore | Units = kWh)
2.65

0.98

Q1 FY25

Q1 FY26

Units Generated from IPP

O&M

For the BOP section of the project, KPEL through its wholly owned subsidiary KP Energy OMS Limited provides comprehensive operations and maintenance services.

Value Delivered

KPEL undertakes O&M services for the BOP portion, to optimize performance and minimise the downtime

Outcome

Energised wind assets are maintained for smooth functioning over their lifecycle.

EPCC Scope of Services



SITE IDENTIFICATION & ACQUISITION

Our key competence is identifying and acquiring feasible high wind sites for utility scale hybrid projects.

Setting up of met masts and LiDAR for site assessment and WTG placement through inhouse Wind Resource Assessment team.

SITE PREPARATION & ENGINEERING

We construct access roads and fetch ROWs in challenging situations along with conducting Soil Bearing Capacity (SBC) tests, Re-Engineering design amongst others points



CONSTRUCTION, ERECTION & COMMISSIONING

WTG civil foundation, 33 kV USS & internal network as well as logistics, installation, erection of Wind Farms and Wind-Solar Hybrid Power projects until commissioning of project

POWER EVACUATION

We undertake EPCC of 33/66, 33/220 & 33/400 kv windfarm pooling substation and EHV lines. Our work spans both CTU & STU connectivity



PERMITS & APPROVALS

We liaison and obtain all requisite permits (for STU and CTU) & approvals from government authorities for the project execution and its operational life thereof

OPERATIONS & MAINTENANCE

O&M services for the entire BOP portion of wind farm for its operational life



Market Statistics

SHAREHOLDING SUMMARY FOR KP ENERGY LIMITED



● **44.88%**
Promoter

● **55.12%**
Public

Shareholding Data as
on 30 June 2025

₹ 675

52 WEEK HIGH

₹ 3,381 Cr

MARKET CAPITALIZATION

₹ 6.69 Cr

SHARES OUTSTANDING

539686

BSE SCIP CODE

KPEL

NSE SYMBOL

BSE

NSE



Scan QR Code for more
information on BSE and NSE
webpage of KP Energy Ltd.

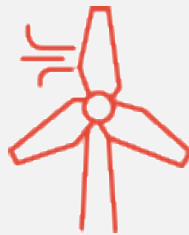
Market Cap. Data as
on 04 August 2025

KP Group Key Entities

KP ENERGY LIMITED

NSE, BSE Listed Company

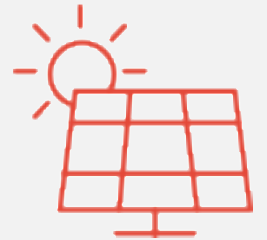
KP Energy Limited is India's top wind project developer, specializing in Balance of Plant (BoP) turnkey solutions, and owning/operating wind and hybrid assets across India with a robust project execution track record



KPI Green Energy Limited

NSE, BSE Listed Company

A leading Indian renewable energy firm, KPI Green develops, owns, and operates large-scale solar and hybrid power plants, supplying clean electricity to commercial and government clients via its IPP and captive project models.



KPI GREEN HYDROGEN AND AMMONIA PRIVATE LIMITED

This company develops and plan to operate green hydrogen and ammonia plants, using renewable energy (solar, wind) for zero-emission fuel, supporting India's clean energy transition and industrial decarbonization.



KP Green Engineering Limited

(Formerly known as K P Buildcon Pvt. Ltd.)

A COMPANY TO SOLVE THE DIFFICULTIES

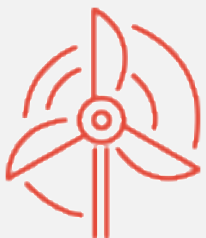
BSE SME Listed Company

KP Group's flagship fabrication arm, manufacturing galvanized steel structures, PEB's and 20+ products for renewable energy, heavy infrastructure and power transmission. The company's upcoming plant at Matar will house Asia's largest kettle for galvanizing.



About KP Group

KP Energy is the leading Wind and Hybrid Renewable Energy Solution Provider



One of the Leading Conglomerates in Renewable Energy Market

The Group is one of the fast-growing companies in India by Turnover and Profits.

The Group aims and is contributing to nation's renewable energy sector.



History of Wealth Creation of KP Group

KP Energy: Listed on BSE SME in 2016, migrating to the Main Board by 2018, Listed on NSE in 2024.

KPI Green Energy: Listed on BSE SME in 2019, advancing to BSE Main Board and NSE in 2021.

KP Green Engineering: Flagship KP Green Engineering, founded 2001, listed on BSE SME in 2024.



Renewable Energy Portfolio Size

1.9+ GW Cumulative Green Energy installed.

Ambitious Target of 10+ GW by Year 2030.

Total CO₂ emissions saved till date amounts over 53 Lakh MT.



First Generation Entrepreneur

Dr. Faruk G. Patel, CMD is the driving force behind the success of KP Group since 1994.

Humanitarian Services – Driven by Passion, Not Obligation



PP Savani University MOU signing for teaching sustainability program to 160 students through KP Human Development Foundation.



Three Anganwadis were redeveloped at Sudi & Samni villages, Bharuch



10,000 Books Distributed Across Seven Adopted Schools



Adopted 8 schools (including 5 Government Schools), 2 private schools and 1 private college (Prabhu BCA College for disabled)

Annual distribution of books & notebooks to adopted schools

3 Anganwadis redeveloped in rural areas to promote education

Developed Hostels for students in Surat belonging to rural areas

33+ Institutions Associated

13,000+ students directly/indirectly benefitted from sponsored scholarships

MoU signed with various universities including SVNIT (under Unnat Bharat Abhiyan) to promote education in renewable energy

Promote empowerment through skill-based programs for women

EDUCATION



35 KW Solar Donation At Shree Modheshvari Hitvadhak Charitable Trust - Old Age Home



KP Human organized a major tree plantation awareness and plants sowing drive across Surat Dist.



Started the campaign to plant more than 1000 trees under the "Vriksharopan Maha-Abhiyan" campaign



KP Human donates 300 plants to Shree Pachhatar Taluka Shala, Dwarka.

Planted over 500,000 trees including mangroves across Gujarat for environmental sustainability

Developed two Amrit Sarovars (Man made Ponds) in water scarce region of Saurashtra

Donated 1 tractor, 2 trailers & 1 Tempo to Tankaria village under Swachh Bharat Abhiyan

ENVIRONMENT

Humanitarian Services – Driven by Passion, Not Obligation



KP Group held blood donation camp at our Talaja Site



Organized a blood group screening camp at Nagar Prathmik Shikshan Samiti Schools, Surat

Helped Thalassemia effected Kids through blood donation drive

Launched free Bhojan Seva at New Civil Hospital, Surat, serving meals to patients and relatives

Partnered with Prashanti Charitable Trust to support cataract surgeries annually through Sathya Sai Seva Samiti

Empowering deaf-mute individuals with financial aid annually

KP Human donates BiPAP machines and oxygen concentrators regularly

HEALTH



Hon. CM of Gujarat & KP Group CMD laid the foundation stone of World's first old-age home for physically challenged. 80% work of 1st Phase already completed



The KP Human Development Foundation, in collaboration with Chhaydo, distributes more than 75,000 meals each year.

Provides nutritious meals to inmates during the sacred months of Shravan and Ramadan

Hosts multiple celebratory banquets for differently-abled students and senior citizens

Purchased all prisoner-created paintings to channel proceeds toward inmate welfare

Supplies BiPAP machines to elder-care homes

Contributed helmets to the Surat Traffic Police's free-distribution drive

Delivered relief meals to flood-stricken communities in Dwarka

HELPING HANDS

Humanitarian Services – Driven by Passion, Not Obligation



Honors the Martyrs at Kargil Vijay Diwas at Samarpan Gaurav Samaroh



Dr. Faruk G. Patel, blesses orphan girls during mass wedding at Surat



Sponsored the visit of 16 orphan daughters and their husband to holy visit (Umrah) at Mecca and Medina



Organized a Char Dham Yatra for approximately 300 women, including mothers and mothers-in-law of underprivileged orphaned girls



Encouraged two-wheeler riders to prioritize safety by distributing free helmets & roses with Surat City Police

Hosted the “Tiranga Samman Yatra”.

Constructed and inaugurated the new Kora Police outpost.

Boosted the city’s CCTV-surveillance campaign by supplying public-awareness signboards.

Provided umbrellas and crowd-control barricades to the Traffic Police.

OTHERS



KP Group proudly participated in a Guinness World Records event, showcasing its commitment to excellence and large-scale impact initiatives in sports promotion. KP Group sponsors a multi-record-holding athlete, funds state-level powerlifting and other championships, and advances Kudo through tournament support - efforts that have earned notable public recognition. Also participated in “Say No To Drugs” Marathon

SPORTS & CULTURE





Vision

Powering INDIA by
the power of
Nature



Values

Ethical

Equal Opportunity to all

Respect for the individual

Transparent

Respect for Diversity

Environmentalism

Mission

Accelerate the adoption of renewable technology across India to conserve our environment and provide an environment friendly and sustainable source of energy through economical and sustainable, renewable energy generating models for our customers and thereby transit them from fossil fuel energy to renewable energy



Contact Us

KP ENERGY LIMITED

OFFICE ADDRESS:

'KP House', Near KP Circle, Opp Ishwar Farm Junction BRTS,
Canal Road, Bhatar, Surat - 395 017, Gujarat, India

+91 261 2234757 / www.kpenergy.in

Investor Enquiries

ir.kpenergy@kpgroup.co/
secretarial@kpgroup.co



Disclaimer

No representation or warranty, express or implied, is made as to, and no reliance should be placed on, the fairness, accuracy, completeness or correctness of the information or opinions contained in this presentation. Such information and opinions are in all events not current after the date of this presentation. Certain statements made in this presentation may not be based on historical information or facts and may be “forward looking statements” based on the currently held beliefs and assumptions of the management of KP Energy Limited (“Company” or “KP Energy”), which are expressed in good faith and in their opinion reasonable, including those relating to the Company’s general business plans and strategy, its future financial condition and growth prospects and future developments in its industry and its competitive and regulatory environment. Forward-looking statements involve known and unknown risks, uncertainties and other factors, which may cause the actual results, financial condition, performance or achievements of the Company or industry results to differ materially from the results, financial condition, performance or achievements expressed or implied by such forward-looking statements, including future changes or developments in the Company’s business, its competitive environment and political, economic, legal and social conditions. Further, past performance is not necessarily indicative of future results. Given these risks, uncertainties and other factors, viewers of this presentation are cautioned not to place undue reliance on these forward- looking statements. The Company disclaims any obligation to update these forward-looking statements to reflect future events or developments. This presentation is for general information purposes only, without regard to any specific objectives, financial situations or informational needs of any particular person. This presentation does not constitute an offer or invitation to purchase or subscribe for any securities in any jurisdiction. No part of it should form the basis of or be relied upon in connection with any investment decision or any contract or commitment to purchase or subscribe for any securities. This presentation may not be copied or disseminated, in whole or in part, and in any manner.