

एन एम डी सी



NMDC

# एन एम डी सी लिमिटेड NMDC Limited

(भारत सरकार का उद्यम) (A GOVT. OF INDIA ENTERPRISE)

पंजीकृत कार्यालय : 'खनिज भवन', 10-3-311/ए, कैसल हिल्स, मासाब टैंक, हैदराबाद - 500 028.  
Regd. Office : 'Khanij Bhavan' 10-3-311/A, Castle Hills, Masab Tank, Hyderabad - 500 028.  
नैगम पहचान संख्या / Corporate Identity Number : L13100TG1958 GOI 001674

No. 18(1)/2008- Sectt

16<sup>th</sup> June 2020

1. The BSE Limited Phiroze Jeejeebhoy Towers, Dalal Street, Mumbai- 400001	2. National Stock Exchange of India Ltd., Exchange Plaza, C-1, Block G, Bandra Kurla Complex, Bandra (E), Mumbai – 400 051
3. The Calcutta Stock Exchange Limited, 7, Lyons Range, Kolkata – 700001	

Dear Sir / Madam,

**Sub: Corporate Investors Presentation on Company's Performance in the FY 2019-2020  
- Reg**

**Ref: Regulation 30 of SEBI (Listing Obligations and Disclosure Requirements)  
Regulations, 2015; Security ID: NMDC**

Reference the captioned subject, kindly note that Corporate Investors Presentation on Company's Performance in the FY 2019-2020 has been uploaded on NMDC website, a copy of which is enclosed herewith for kind reference.

Please take note of the above information.

Thanking you

Yours faithfully,  
For **NMDC Limited**

  
**A S Pardha Saradhi**  
Company Secretary

Encl: As above



## Disclaimer

This presentation is issued by NMDC Limited (the "Company") for general information purposes only, without regard to specific objectives, suitability, financial situations and needs of any particular person and does not constitute any recommendation or form part of any offer or invitation or inducement to sell or issue, or any solicitation of any offer to purchase or subscribe for, any securities of the Company, nor shall it or any part of it or the fact of its distribution form the basis of, or be relied on in connection with, any contract or commitment therefor. This presentation does not solicit any action based on the material contained herein. Nothing in this presentation is intended by the Company to be construed as legal, accounting or tax advice.

This presentation has been prepared by the Company based upon information available in the public domain. This presentation has not been approved and will not or may not be reviewed or approved by any statutory or regulatory authority in India or by any Stock Exchange in India. This presentation may include statements which may constitute forward-looking statements. The actual results could differ materially from those projected in any such forward-looking statements because of various factors. The Company assumes no responsibility to publicly amend, modify or revise any forward-looking statements, on the basis of any subsequent developments, information or events, or otherwise.

This presentation contains certain forward-looking statements relating to the business, financial performance, strategy and results of the Company and/or the industry in which it operates. Forward-looking statements are statements concerning future circumstances and results, and any other statements that are not historical facts, sometimes identified by the words "believes", "expects", "predicts", "intends", "projects", "plans", "estimates", "aims", "foresees", "anticipates", "targets", and similar expressions. The forward-looking statements, including those cited from third party sources, contained in this presentation are based on numerous assumptions and are uncertain and subject to risks. A multitude of factors including, but not limited to, changes in demand, competition and technology, can cause actual events, performance or results to differ significantly from any anticipated development. Neither the Company nor its affiliates or advisors or representatives nor any of its or their parent or subsidiary undertakings or any such person's officers or employees guarantees that the assumptions underlying such forward-looking statements are free from errors nor does either accept any responsibility for the future accuracy of the forward-looking statements contained in this Presentation or the actual occurrence of the forecasted developments. Forward-looking statements speak only as of the date of this presentation. As a result, the Company expressly disclaims any obligation or undertaking to release any update or revisions to any forward-looking statements in this presentation as a result of any change in expectations or any change in events, conditions, assumptions or circumstances on which these forward looking statements are based.

The information contained in these materials has not been independently verified. None of the Company, its Directors, Promoter or affiliates, nor any of its or their respective employees, advisers or representatives or any other person accepts any responsibility or liability whatsoever, whether arising in tort, contract or otherwise, for any errors, omissions or inaccuracies in such information or opinions or for any loss, cost or damage suffered or incurred howsoever arising, directly or indirectly, from any use of this document or its contents or otherwise in connection with this document, and makes no representation or warranty, express or implied, for the contents of this document including its accuracy, fairness, completeness or verification or for any other statement made or purported to be made by any of them, or on behalf of them, and nothing in this document or at this presentation shall be relied upon as a promise or representation in this respect, whether as to the past or the future. Past performance is not a guide for future performance. The information contained in this presentation is current, and if not stated otherwise, made as of the date of this presentation. The Company undertake no obligation to update or revise any information in this presentation as a result of new information, future events or otherwise. Any person/ party intending to provide finance/ invest in the shares/ businesses of the Company shall do so after seeking their own professional advice and after carrying out their own due diligence procedure to ensure that they are making an informed decision.

This presentation is strictly confidential and may not be copied or disseminated, in whole or in part, and in any manner or for any purpose. No person is authorized to give any information or to make any representation not contained in or inconsistent with this presentation and if given or made, such information or representation must not be relied upon as having been authorized by any person. Failure to comply with this restriction may constitute a violation of the applicable securities laws. This presentation is not intended for distribution or publication in the United States. Neither this document nor any part or copy of it may be distributed, directly or indirectly, in the United States. The distribution of this document in certain jurisdictions may be restricted by law and persons in to whose possession this presentation comes should inform themselves about and observe any such restrictions. By reviewing this presentation, you agree to be bound by the foregoing limitations. You further represent and agree that (i) you are located outside the United States and you are permitted under the laws of your jurisdiction to receive this presentation or (ii) you are located in the United States and are a "qualified institutional buyer" (as defined in Rule 144A under the Securities Act of 1933, as amended (the "Securities Act").

This presentation is not an offer to sell or a solicitation of any offer to buy the securities of the Company in the United States or in any other jurisdiction where such offer or sale would be unlawful. Securities may not be offered, sold, resold, pledged, delivered, distributed or transferred, directly or indirectly, in to or within the United States absent registration under the Securities Act, except pursuant to an exemption from, or in a transaction not subject to, the registration requirements of the Securities Act and in compliance with any applicable securities laws of any state or other jurisdiction of the United States. The Company's securities have not been and will not be registered under the Securities Act.

## Extra-ordinary measures during extra-ordinary times



Sanitization of Township and office areas



Anna Daan initiative by NMDC for deprived



Ispati Irada



Social distancing at work place, co operative stores, banks etc within NMDC's township



Thermal Scanning of NMDC's Employees



Free of cost face mask for needy

## FY20 : Financial Snapshot

Stable Performance despite non operation of DIOM

### Volumes

Production **314.89 LT**

↓ **3%** from CPLY of 323.61 LT

Sales **315.14 LT**

↓ **3%** from CPLY of 323.56 LT

### Revenue

Rs. **11699 cr** ↓ **4%**

@ Avg. Realisation of Rs. 3671 per ton for iron ore

from CPLY of Rs. 12153 crore, @ Avg. Realisation of Rs. 3708 per ton

### Profitability

PBT Rs. **6122 cr**

↓ **15%** from CPLY of Rs. 7198 cr

PAT Rs. **3610 cr**

↓ **22%** from CPLY of Rs. 4642 cr

### EBITDA

Rs. **6427 cr**

Margin of 55%

↓ **15%** from CPLY of Rs. 7518 crore  
Margin of 62%

### Value Creation

Rs. **11.79** (Rs. 14.70)

Earning Per Share

Rs. **89.9** (Rs. 84.8)

Book Value Per Share

### ROCE & ROE

**48%** (61%)

Return on Capital Employed

**13%** (18%)

Return on Equity

### Impact of Covid – 19 on the Performance of the Company

- There has been a loss of around 10.0 LT of Production and 5.50 LT of Sale of Iron ore during FY 2019-20 (in March 20).
- This has resulted in a estimated loss in sales revenue of Rs 220 Crore and PBT of Rs 120 crore.

## Performance of FY 20 on FY 19

Particulars	2019-20	2018-19	Variance	(%)
Iron Ore Production (LT)	314.89	323.61	(8.72)	(3)
Iron Ore Sales (LT)	315.14	323.56	(8.42)	(3)
- Export Sales (LT)	24.40	11.78	12.62	107
- Domestic Sales (LT)	290.74	311.78	(21.04)	(7)
Average Domestic Realisation (Rs./Ton)	3,438	3,673	(235)	(6)
Average Sales Realisation (Rs./Ton)	3,671	3,708	(37)	(1)
<b>Financials (Rs. Crore)</b>				
Iron ore Sales	11,569	11,998	(429)	(4)
<b>Revenue from Operations</b>	<b>11,699</b>	<b>12,153</b>	<b>(454)</b>	<b>(4)</b>
Interest Income	330	409	(79)	(19)
Other Income	184	179	5	3
Total Income	12,213	12,741	(528)	(4)
Total Expenses	5,995	5,543	452	8
EBITDA	6,427	7,518	(1,091)	(15)
EBITDA Margin (%)	55%	62%		
<b>Profit Before Tax</b>	<b>6,122</b>	<b>7,198</b>	<b>(1,076)</b>	<b>(15)</b>
<b>Profit After Tax</b>	<b>3,610</b>	<b>4,642</b>	<b>(1,032)</b>	<b>(22)</b>

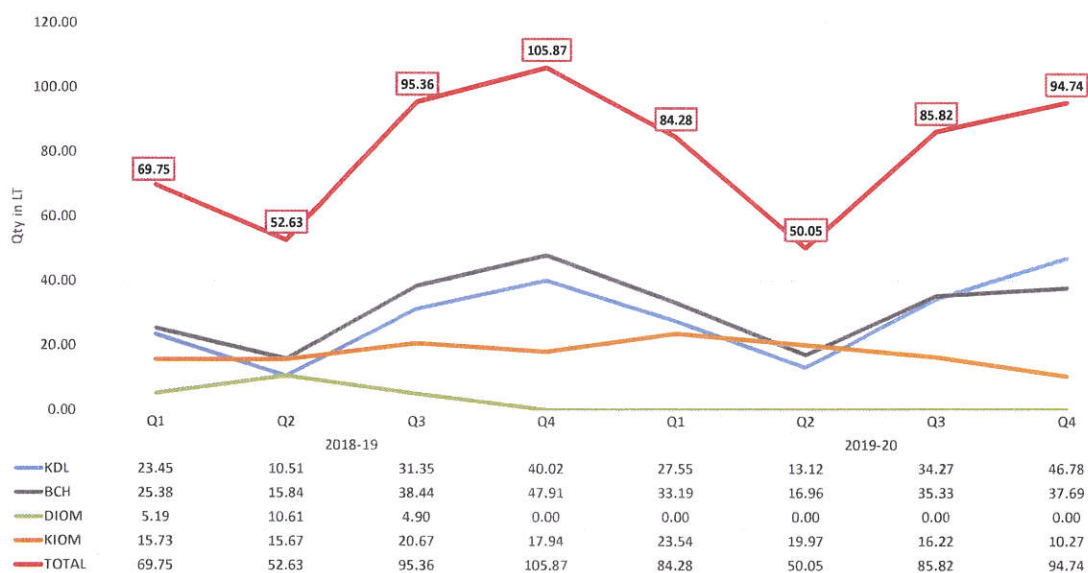
## Performance of Q4 (FY 20) on Q4 (FY 19)

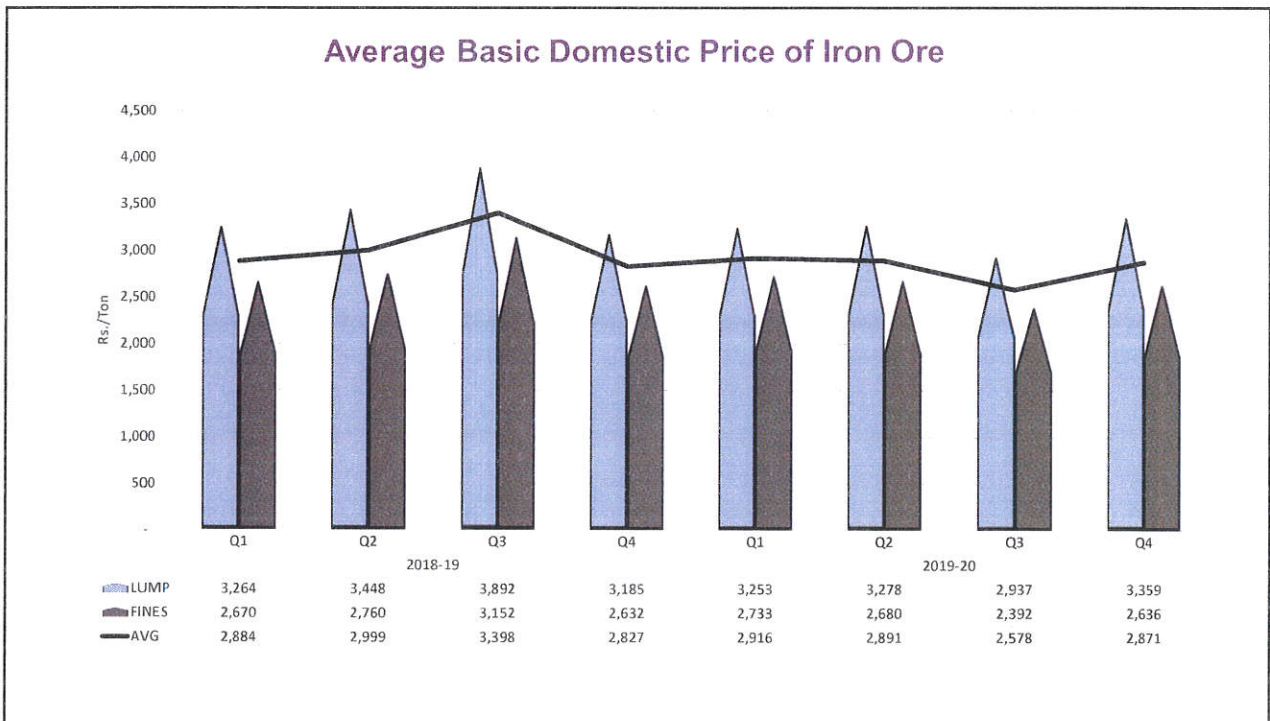
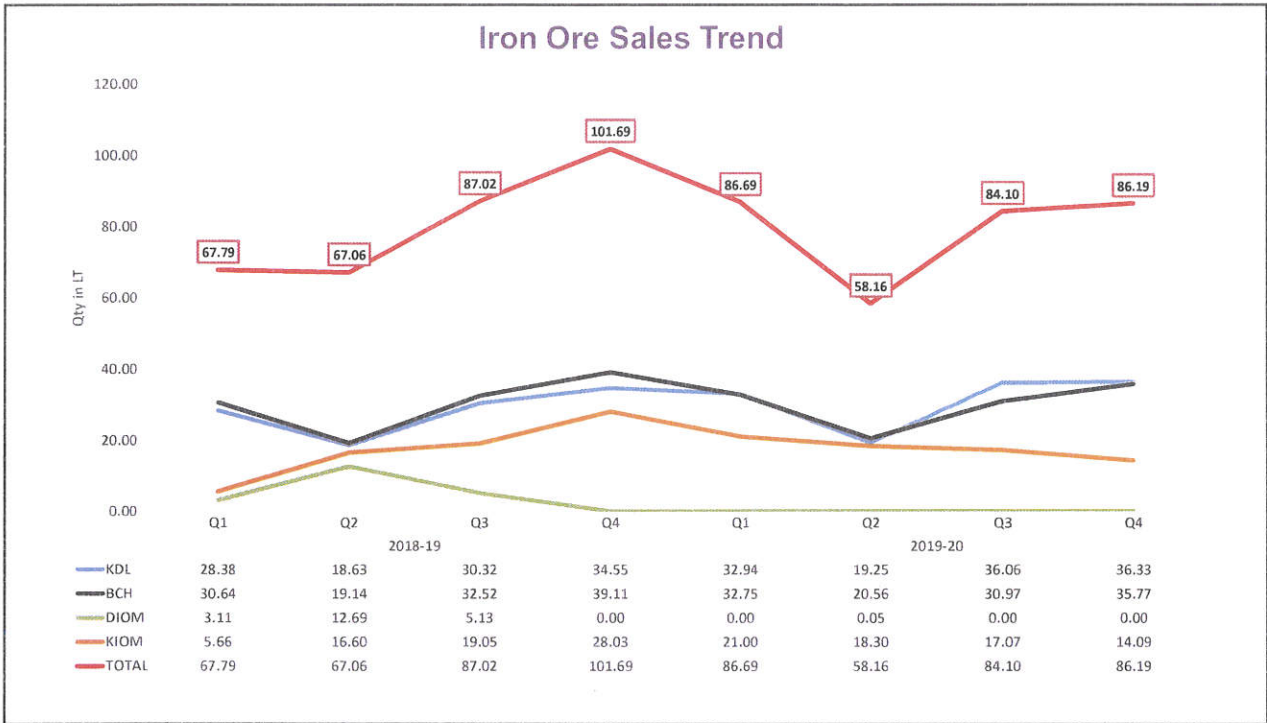
Particulars	2019-20 (Q4)	2018-19 (Q4)	Variance	(%)
Iron Ore Production (LT)	94.74	105.87	(11.13)	(11)
Iron Ore Sales (LT)	86.19	101.69	(15.50)	(15)
- Export Sales (LT)	6.69	5.19	1.50	29
- Domestic Sales (LT)	79.50	96.50	(17.00)	(18)
Average Domestic Realisation (Rs./Ton)	3,473	3,443	30	1
Average Sales Realisation (Rs./Ton)	3,674	3,525	149	4
<b>Financials (Rs. Crore)</b>				
Iron ore Sales	3,167	3,585	(418)	(12)
<b>Revenue from Operations</b>	<b>3,187</b>	<b>3,643</b>	<b>(456)</b>	<b>(13)</b>
Interest Income	63	104	(41)	(39)
Other Income	70	92	(22)	(24)
Total Income	3,320	3,839	(519)	(14)
Total Expenses	1,742	1,642	100	6
EBITDA	1,528	2,288	(760)	(33)
EBITDA Margin (%)	(48%)	(63%)		
<b>Profit Before Tax</b>	<b>1,482</b>	<b>2,197</b>	<b>(715)</b>	<b>(33)</b>
<b>Profit After Tax</b>	<b>351</b>	<b>1,454</b>	<b>(1103)</b>	<b>(76)</b>

## Performance of Q4 (FY 20) on Q3 (FY 20)

Particulars	2019-20 (Q4)	2019-20 (Q3)	Variance	(%)
Iron Ore Production (LT)	94.74	85.82	8.92	10
Iron Ore Sales (LT)	86.19	84.10	2.09	2
- Export Sales (LT)	6.69	6.52	0.17	3
- Domestic Sales (LT)	79.50	77.58	1.92	2
Average Domestic Realisation (Rs./Ton)	3,473	3,253	220	7
Average Sales Realisation (Rs./Ton)	3,674	3,557	117	3
<b>Financials (Rs. Crore)</b>				
Iron ore Sales	3,167	2,992	175	6
<b>Revenue from Operations</b>	<b>3,187</b>	<b>3,006</b>	<b>181</b>	<b>6</b>
Interest Income	63	90	(27)	(30)
Other Income	70	40	30	75
Total Income	3,320	3,136	184	6
Total Expenses	1,742	1,489	253	17
EBITDA	1,528	1,721	(193)	(11)
EBITDA Margin (%)	(48%)	(57%)		
<b>Profit Before Tax</b>	<b>1,482</b>	<b>1,647</b>	<b>(165)</b>	<b>(10)</b>
<b>Profit After Tax</b>	<b>351</b>	<b>1,376</b>	<b>(1,025)</b>	<b>(74)</b>

## Iron Ore Production Trend





### Corporate Social Responsibility (“CSR”) initiatives

Spend Rs. 200 crore as CSR Expenditure for FY 20.

#### Propagating Healthcare



Providing medical facilities at interior regions through “Hospital on Wheels” initiative.

#### NMDC: Eco Friendly Miner



Five Mines of NMDC have received 5-Star rating w.r.t. Sustainability from Govt. of India

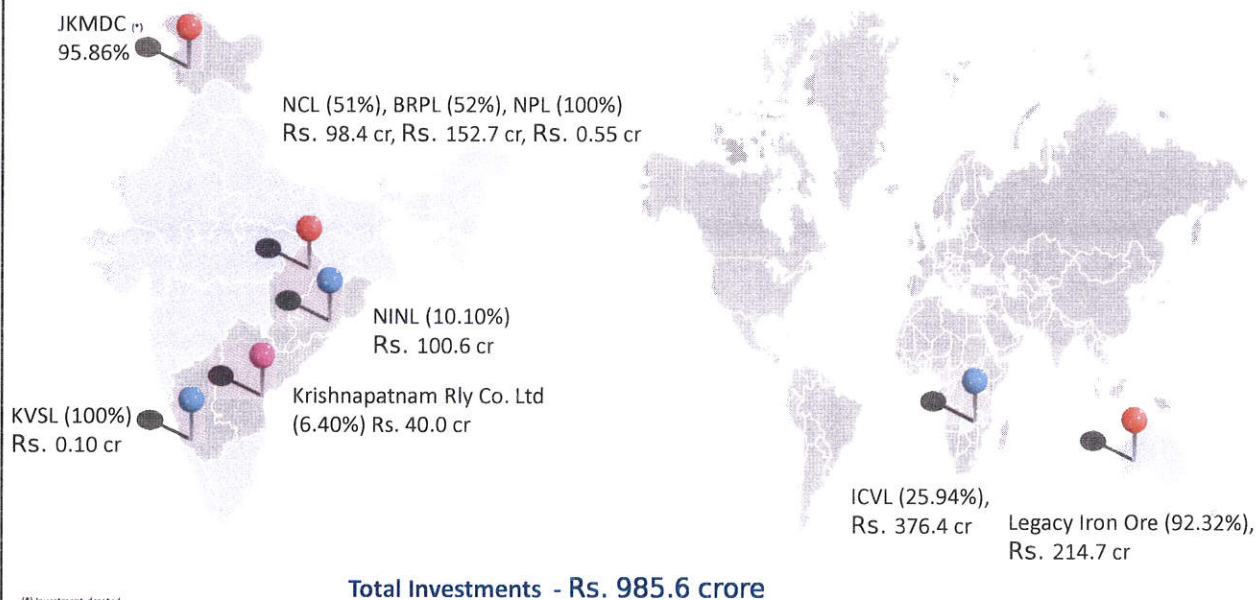
#### Women Empowerment



Empowering through Education, Healthcare & Skill Development

Also contributed Rs. 150 crore towards PM Cares Fund

### Major Investment in Subsidiaries, JVs & Associates



### Details of Top 25 Shareholders as on 12-06-2020

Sl. No.	Shareholder	No. of Shares	% Holding
1	PRESIDENT OF INDIA	2132453593	69.7
2	LIFE INSURANCE CORPORATION OF INDIA	394591074	12.9
3	RELIANCE CAPITAL TRUSTEE CO LTD-A/C NIPPON INDIA ETF JUNIOR BEES	73572586	2.4
4	LIFE INSURANCE CORPORATION OF INDIA P & GS FUND	20294358	0.66
5	ICICI PRUDENTIAL LIFE INSURANCE COMPANY LIMITED	17964848	0.59
6	ADITYA BIRLA SUN LIFE TRUSTEE PRIVATE LIMITED A/C ADITYA BIRLA SUN LIFE NIFTY NEXT 50 ETF	17784892	0.58
7	EDGBASTON ASIAN EQUITY TRUST	16520823	0.54
8	VANGUARD TOTAL INTERNATIONAL STOCK INDEX FUND	13305868	0.43
9	STATE BANK OF INDIA	11680466	0.38
10	CANARA BANK-MUMBAI	11069767	0.36
11	VANGUARD EMERGING MARKETS STOCK INDEX FUND, SERIES OF VANGUARD INTERNATIONAL EQUITY INDEX FUNDS	10501737	0.34
12	ICICI PRUDENTIAL S&P BSE 500 ETF	9070157	0.3
13	NPS TRUST- A/C SBI PENSION FUND SCHEME - CENTRAL GOVT	8746686	0.29
14	THE NEW INDIA ASSURANCE COMPANY LIMITED	8266508	0.27
15	LSV EMERGING MARKETS EQUITY FUND LP	8184300	0.27
16	STICHTING DEPOSITARY APG EMERGING MARKETS EQUITY POOL	6806523	0.22
17	THE EDGBASTON ASIAN EQUITY (JERSEY) TRUST	6656014	0.22
18	UNITED INDIA INSURANCE COMPANY LIMITED	6566033	0.21
19	BANK OF INDIA	4898396	0.16
20	HSBC POOLED INVESTMENT FUND - HSBC POOLED VC ASIA PACIFIC EX JAPAN EQUITY FUND	4465910	0.15
21	NATIONAL INSURANCE COMPANY LTD	4200721	0.14
22	KOTAK EQUITY ARBITRAGE FUND	4068000	0.13
23	THE ORIENTAL INSURANCE COMPANY LIMITED	3768000	0.12
24	CITY OF NEW YORK GROUP TRUST	3430284	0.11
25	WISDOMTREE INDIA INVESTMENT PORTFOLIO, INC.	3340183	0.11
	<b>TOTAL</b>	<b>2802207727</b>	<b>91.6</b>



NMDC committed to Support the Nation in Aatma-Nirbhar Bharat Mission

# Thank You

**Harr ek Kaam Desh ke Naam!**