



Investor Presentation

Q4 FY 2025

14 May 2025



Disclaimer

This presentation has been prepared by Synergy Green Industries Ltd (SGIL) solely for informational purposes. The information contained herein does not constitute or form part of any offer or invitation to sell, or any solicitation of an offer to purchase or subscribe for, any securities of the Company, nor shall it or any part of it form the basis of, or be relied upon in connection with, any contract or commitment whatsoever.

The information contained in this presentation is provided as of the date hereof and is subject to change without notice. **This presentation contains statements that constitute forward-looking statements.** These statements include descriptions regarding the intent, belief, or current expectations of the Company or its officers and may involve risks and uncertainties. **Such forward-looking statements are not guarantees of future performance, and actual results may differ materially from those projected.** Factors that could cause actual results to differ materially from those indicated in such forward-looking statements include, but are not limited to, changes in global and national economic conditions, changes in market conditions, competitive developments, regulatory changes, and other unforeseen events.

No representation or warranty, express or implied, is made as to, and no reliance should be placed on, the fairness, accuracy, completeness, or correctness of the information or opinions contained in this presentation. Neither the Company nor any of its affiliates, advisers, or representatives shall have any liability whatsoever (in negligence or otherwise) for any loss howsoever arising from any use of this presentation or its contents or otherwise arising in connection with this presentation.

This presentation should not be construed as legal, tax, investment, or other advice. Each recipient should conduct its own investigation and analysis of the Company and the information contained herein, and is advised to seek its own professional advice on the legal, tax, regulatory, financial, and accounting implications of any investment decision.

The distribution of this presentation in certain jurisdictions may be restricted by law, and recipients of this presentation should inform themselves about, and observe any such restrictions. Any failure to comply with these restrictions may constitute a violation of the laws of any such jurisdiction.

By attending or receiving this presentation, you agree to be bound by the foregoing limitations.

- 
- 01 Industry Overview**
 - 02 Company Profile
 - 03 Business Performance

Climate urgency. Geopolitical disruptions. Fragile supply chains.
The World Is Rewiring...

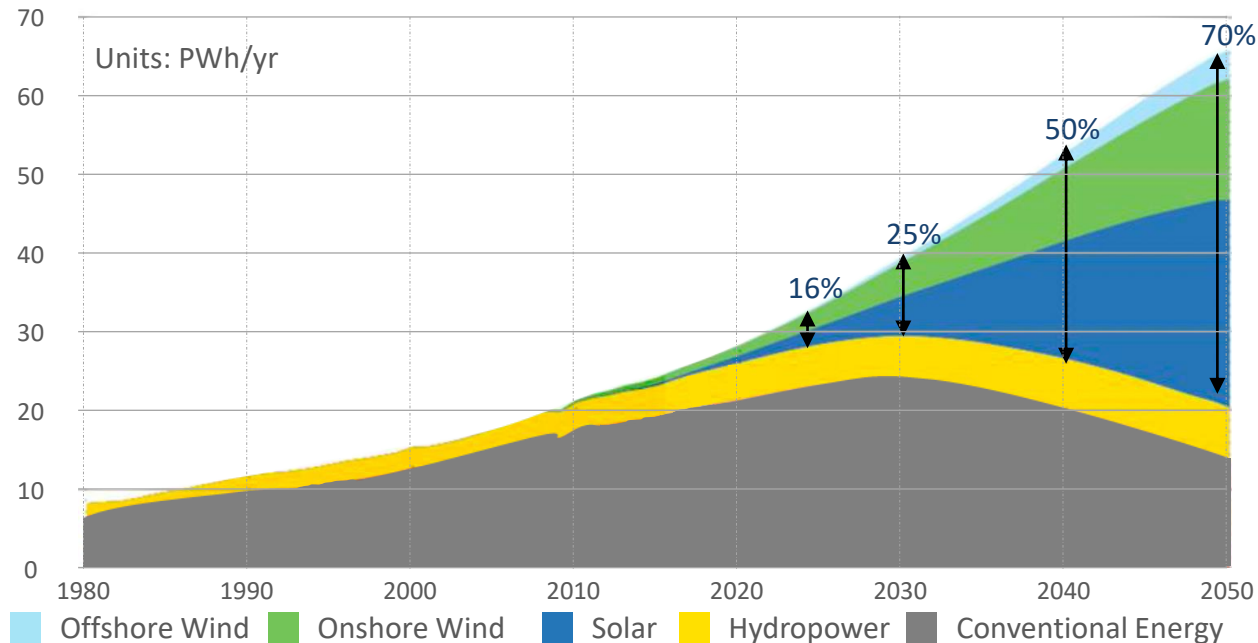


...Towards Renewables, Resilience, and Sustainable Manufacturing

Energy transition to Renewables

Global Economy	\$112 Tn (by 2025)	Energy Share	7%
----------------	------------------------------	--------------	-----------

World Electricity Generation by Power Sources (1980-2050)



Source: Global Data / DNV.GL, 09/2018

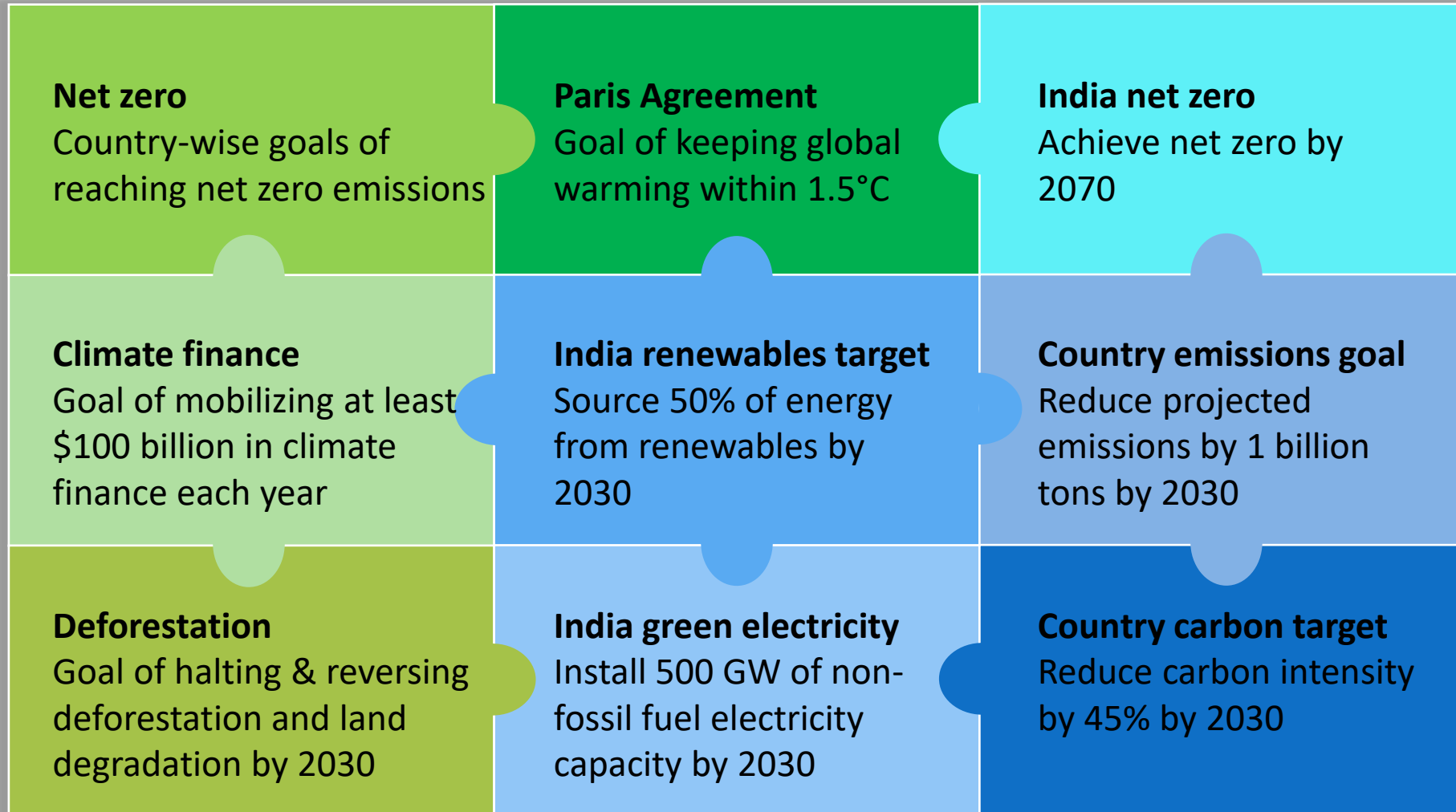
Renewables will be 70% by 2050

Renewable Growth Drivers

- Fights against climate Change
- Competitive Energy Cost over Conventional fuels
- Energy without depletion of Natural Resources
- Reduces Oil & Coal imports and Saves Foreign exchange

The World is betting on Renewables

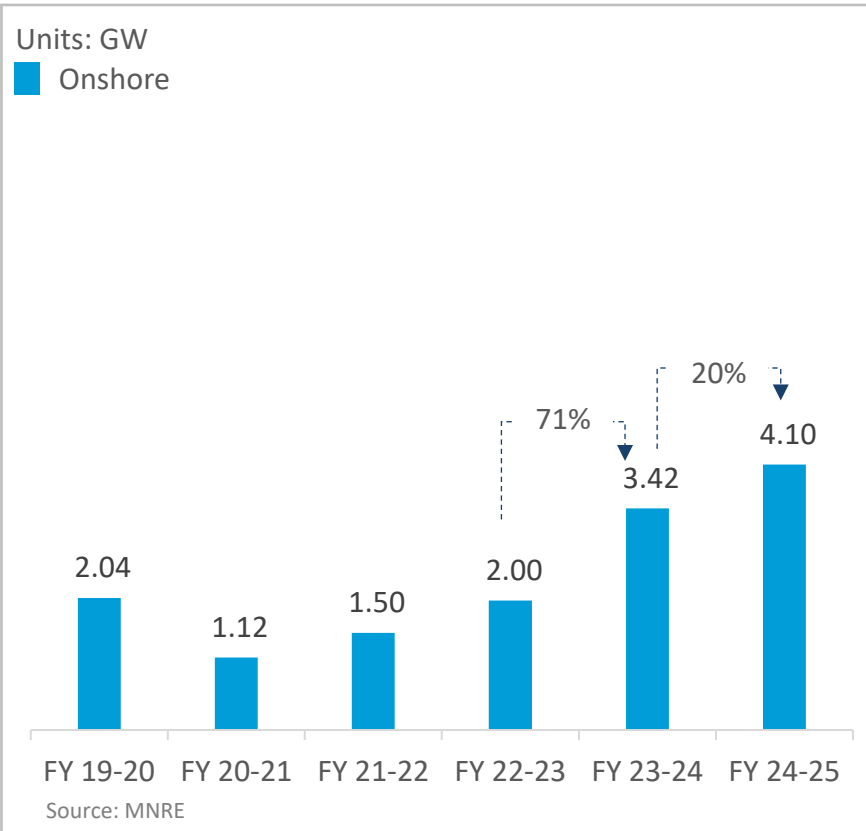
GLOBAL



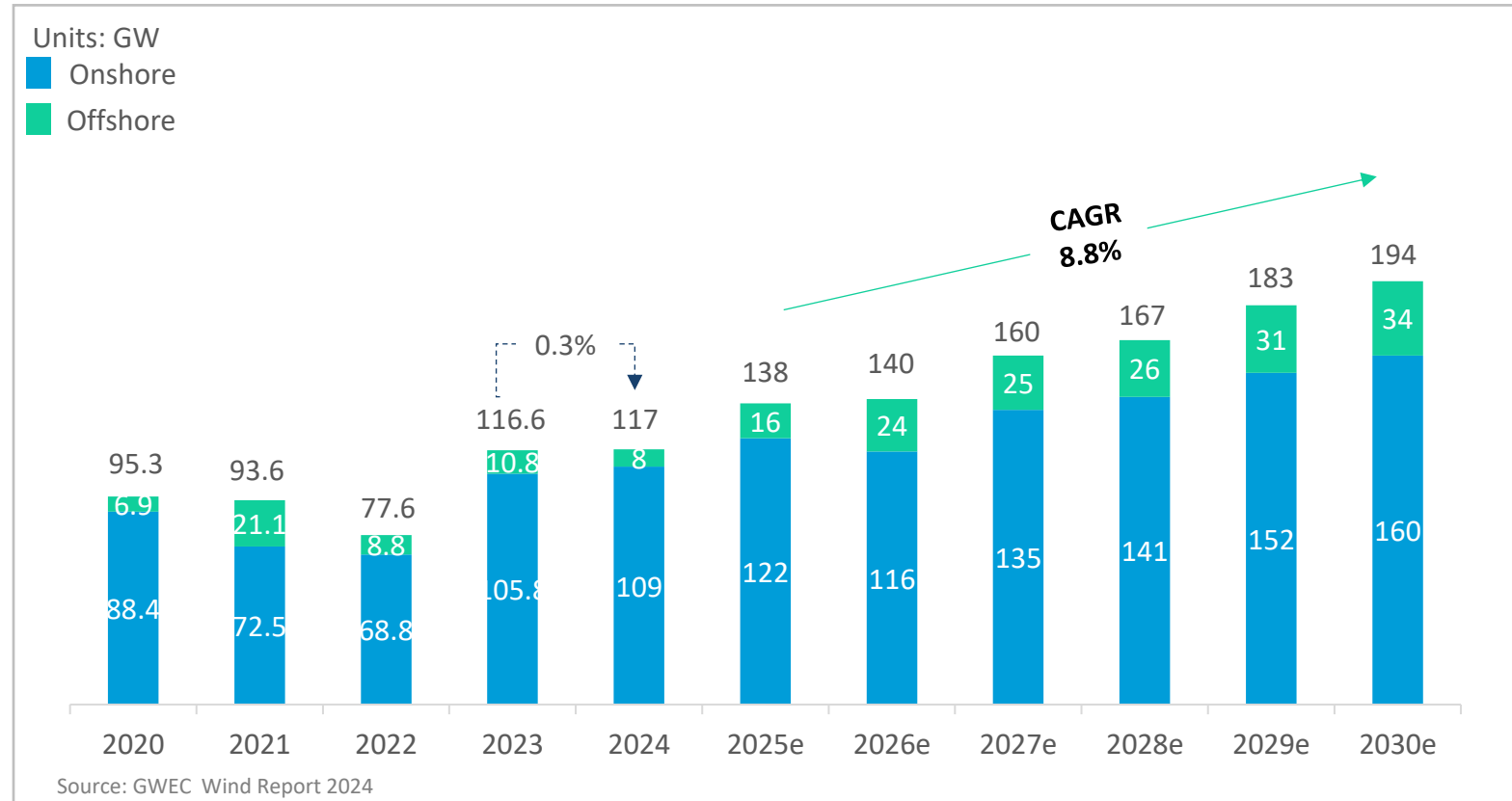
INDIA "PANCHAMRIT" at COP26

India and Global Wind Installations

India Wind Installations



Global Wind Installations



Growth Drivers

Domestic

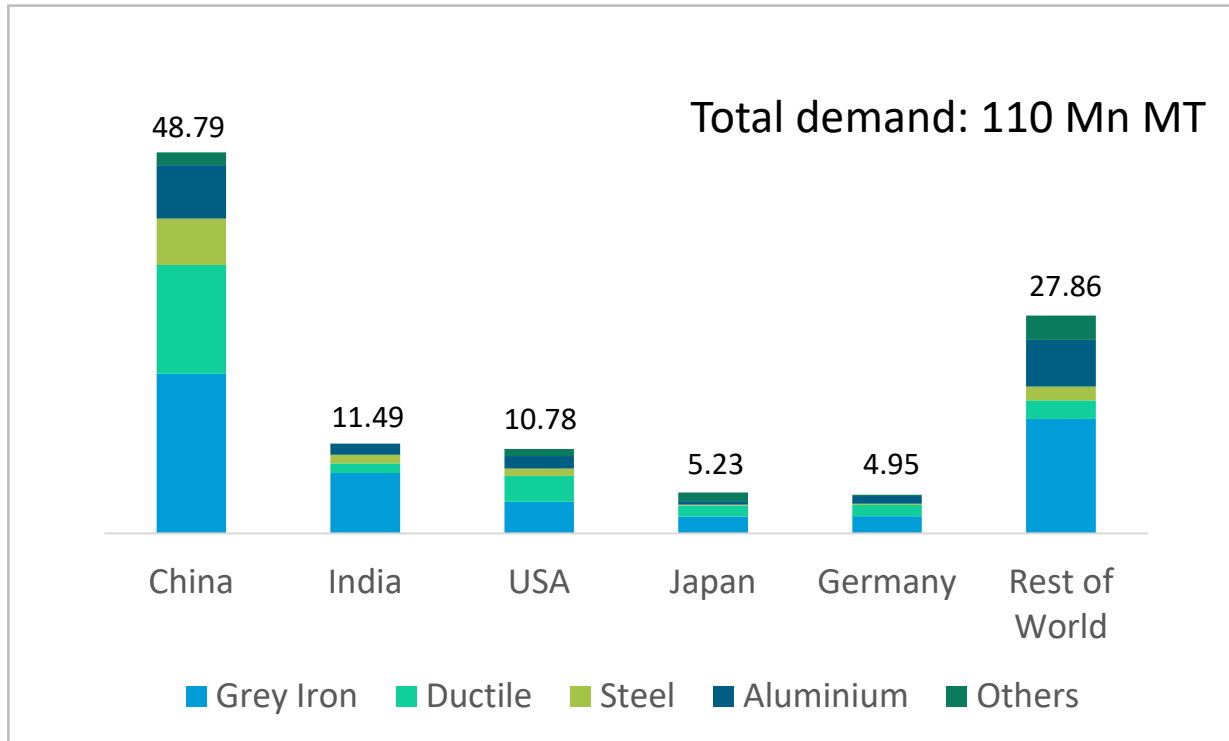
- **10 GW** of annual wind bids & Wind RPO up to **2030**
- **Minimum** Renewable **mandate** to DISCOM
- Increase in wind from **48 GW to 140 GW** by **2030**; renewables forming 50% mix, **Carbon Neutral by 2070**

Global

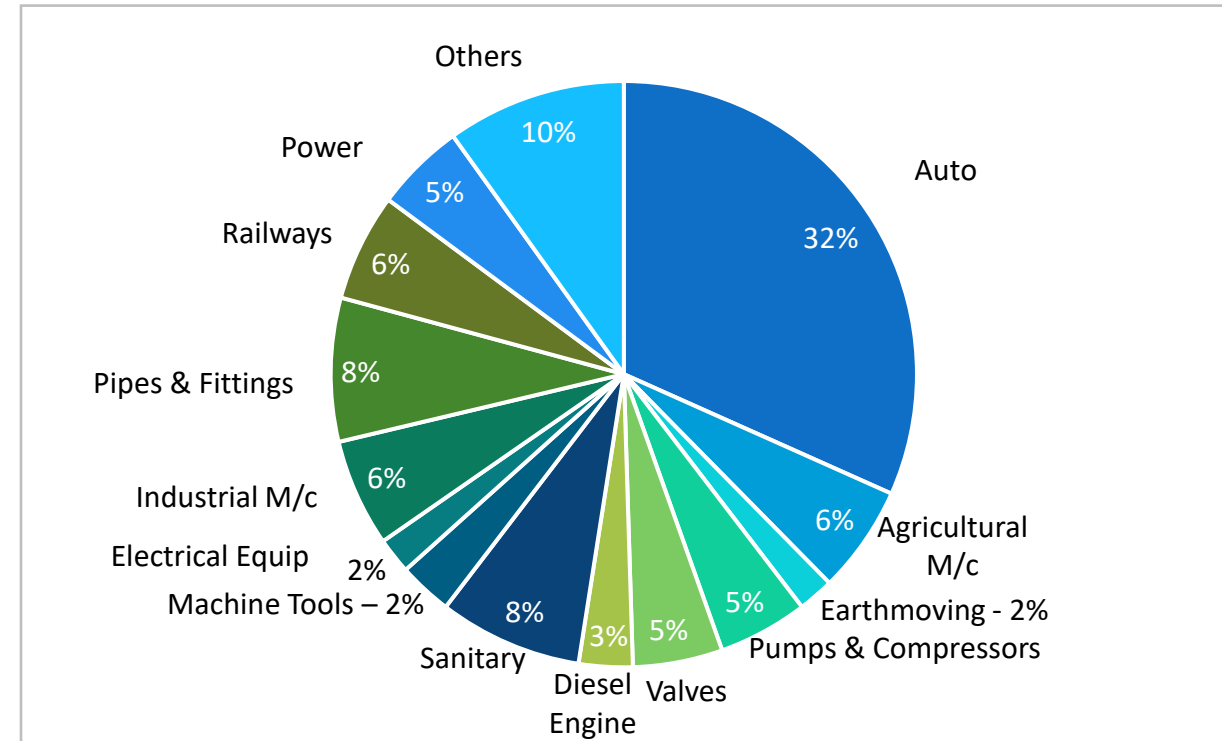
- **COP28 target** needs triple annual wind installations from **117 GW to ~350 GW up to 2030**
- GWEC projections for wind to **add nearly 1 TW capacity** up to 2030 (current global capacity: 1.1 TW)

We are diversified to cater to broader castings market

Country wise Total Castings Demand



Sector wise Major Consumers of Castings



Sources: Indian Institute of Foundrymen reporting, Foundry Planet

Casting Market Size & Growth Forecast

Casting market 2023

Global: \$ 155 bn

India: \$ 19.5 bn

Next 10 years growth

Global: \$ 378 bn @ 8.7%

India: @ 10.3%

Wind demand is 1.5 Mn MT (1.4%) and estimated to cross 2.3 Mn MT in next 5 years

Large castings market is estimated to be over 8 Mn MT (7%)

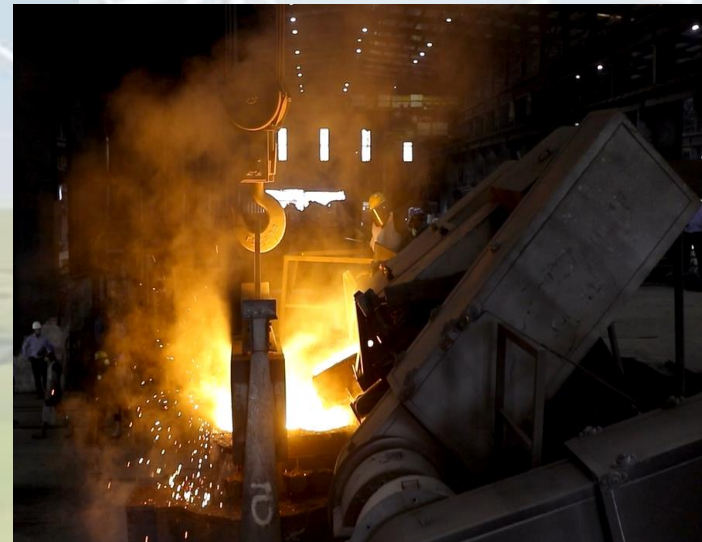
- 
- 01 Industry Overview
 - 02 Company Profile**
 - 03 Business Performance

Brief overview

SGIL is one of India's leading manufacturers of large-size critical castings for wind and general engineering products.

Product Profile –

- *Weight Range: 3 MT to 30 MT*
- *Materials: SG Iron, Cast Iron and Steel*
- *Capacity: 30,000 TPA (45,000 TPA in Progress)*



We have state of the art facilities

FACILITIES

All the Equipment from leading Brands in the world



Production Line

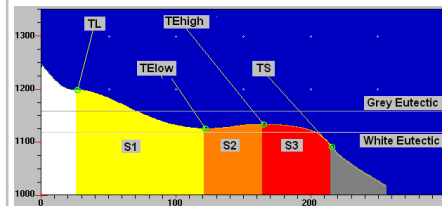


SOFTWARE

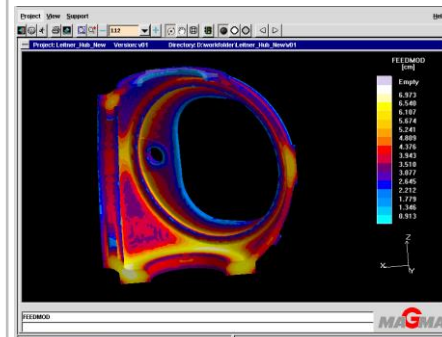
Best in Class IT



ATAS



Simulation



QUALITY

NABL Certified Quality Testing facilities



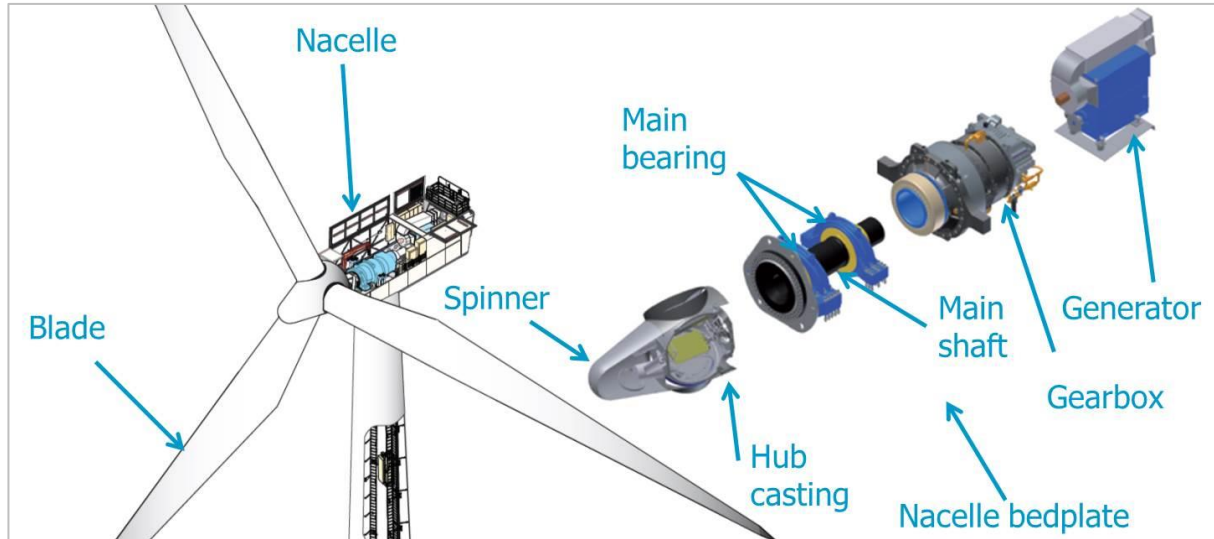
Quality Certifications



ISO 9001
ISO 14001
ISO 18001
TPG Certification
ISO 27001
ISO 50001

Our Products

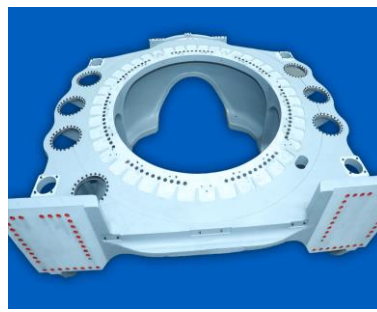
Wind Castings



Wind Castings (70%) + Gear Box Castings (15%)



Rotor Hub



Main Frame

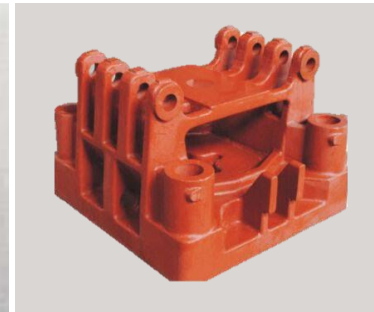


Gear Box PLC

Non-Wind Castings



Mining



**Plastic Injection
Machines**

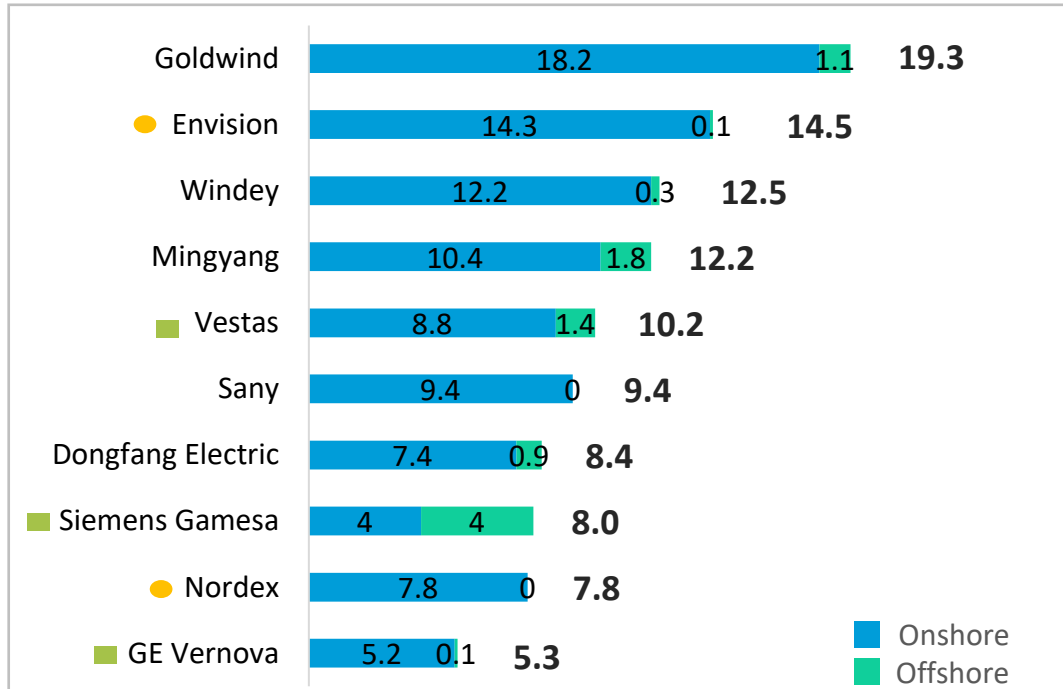


Pumps

Our Customers

Trusted by 50% of the World's Top 10 Wind OEMs

Leading Wind OEMs in 2024



● Clients Onboarding In Progress ■ Clients Onboarded

Our Customers



Wind

Non Wind



SWOT Analysis

STRENGTH

- Ability to Produce **large castings** up to 30 MT
- Established products with **Top Global OEMs**
- Ability to build large capacities **with capital efficiency**

OPPORTUNITY

- Excellent **growth** opportunities in **Renewable's** with **high entry barriers**
- **India** is being converted as manufacturing Hub offers **growing** casting **demand**
- Trade wars/Global Sentiments **favors** India's demand



WEAKNESS

- **Limited Capacity** compared to peers (scaling up from 30,000 TPA to 45,000 TPA)
- Currently 100% **machining is outsourced** (~20,000 TPA in-house machining planned)

THREAT

- **80% of business** from **wind industry** (facilities can produce large castings to any other industries)
- Volatile **Commodity prices** can impact profitability (Key commodities are hedged with customers on quarterly basis)

- 
- 01 Industry Overview
 - 02 Company Profile
 - 03 Business Performance**

Summary of audited financial results Q4 FY25

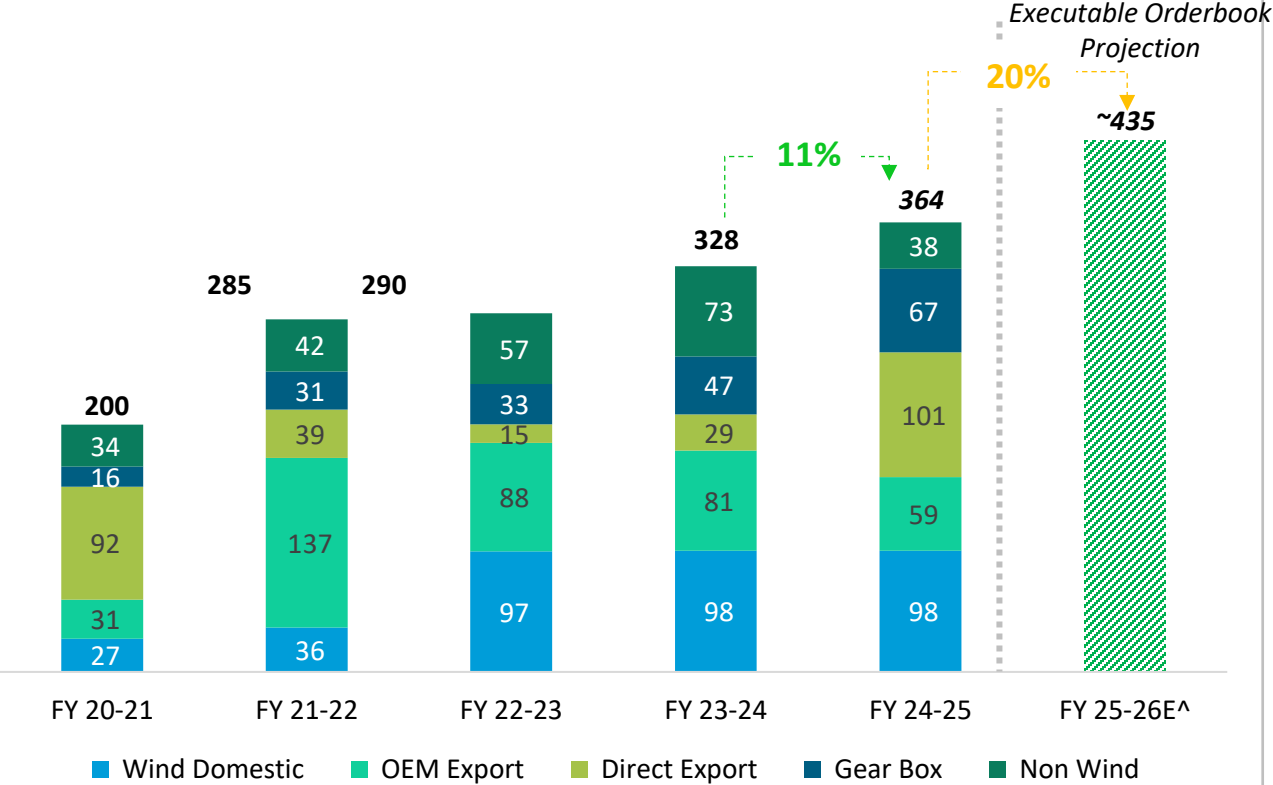
All figures in Rs Crore

Particulars	Quarter Ended (3 Months)			Year Ended (12 Months)	
Period	31.03.25	31.12.24	31.03.24	31.03.25	31.03.24
Total Income	97.91	97.84	83.32	363.68	328.05
Profit before Depreciation, Interest and Tax (PBDIT)	15.31	14.65	10.58	53.70	41.10
PBDIT Margin	15.64%	14.98%	12.70%	14.77%	12.53%
Depreciation & Amortization Expenses	3.15	3.60	3.23	13.02	12.09
Finance Costs	4.49	4.04	3.32	15.69	13.35
Profit/(Loss) before Tax	7.67	7.01	4.03	24.99	15.66
Tax Expenses and Deferred Tax Liability	3.83	1.07	0.78	8.10	4.09
Profit/(Loss) after Tax	3.84	5.95	3.25	16.89	11.56

Disclaimer: The aforesaid information is based on prudent estimates of the Company Management based on four quarter audited results and present business conditions. Investors and stakeholders are advised to exercise their own judgment and seek independent advice before making any investment decisions.

Brief overview of financials

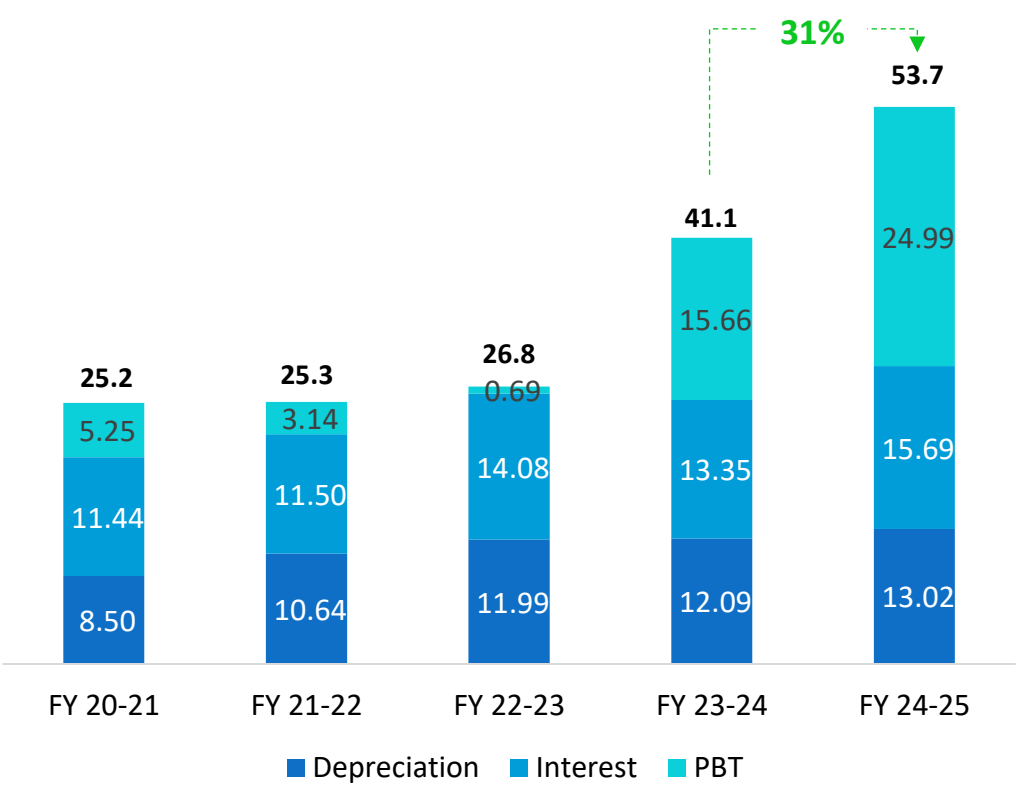
Revenue streams (in Rs Cr) and Estimate



Year End Results of FY 24 25 are audited
 ^ Executable Orderbook Projection is based on Orderbook Projections/Schedules available with management on the date of publishing and may be subject to change based on market conditions.

Year ended FY25 recorded a revenue growth of 11% over corresponding period of the previous year.


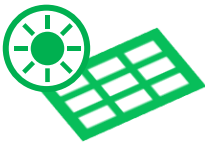

PBDIT over the period (in Rs Cr)



During FY25, PBDIT margins expanded by 224 bps from 12.53% to 14.77%.

Cost structure and CAPEX plans

Capex and margin expansion plan ~Rs 187 Cr

Area	CAPEX	Target
Foundry 	Rs. 60 Crore	Capacity expansion 30,000 to 45,000 MT Operational: Q2 FY 26
Captive renewable power 	Rs. 30 Crore	Increase from 2 MW to 10 MW solar project Operational: Q1 FY 26
In-house machining* 	Phase 1: Rs. 67 Crore Phase 2: Rs. 30 Crore	In-house machining facility operational by: Phase 1: 10,000 TPA (by Q3 FY 26) Phase 2: 10,000 TPA (by Q4 FY 26)

Initiatives to triple bottom line (Planet, People, Profit)

Carbon Footprint (Renewables)



Reduce **carbon footprint** through renewables and achieve 50% green production by 2030

Technology Leadership

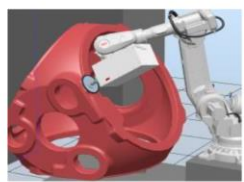
Casting Name - V Hub

Size - 3-4 tons 2.5 m diameter
Manual Grinding Time - 4500min

RAG Time - 400min
Reduced Manual Grinding time - 800min



Process Automation
& Digitization



Waste Management



- Thermal reclamation to improve **Sand Recycling from 92% to 98%**
- Material recycling and waste management

Energy Optimization

- 14 MW Dedicated Express feeder
- Equipment balancing like 15 MT Furnace
- Centralized Energy Monitoring System



Environment goes hand-in-hand with Economics

The Path Ahead

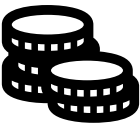
FY 2025-26 Performance Outlook



~20% revenue growth expected for the coming year, supported by robust orderbook projections from major OEMs in the country and benefits of capacity expansion.

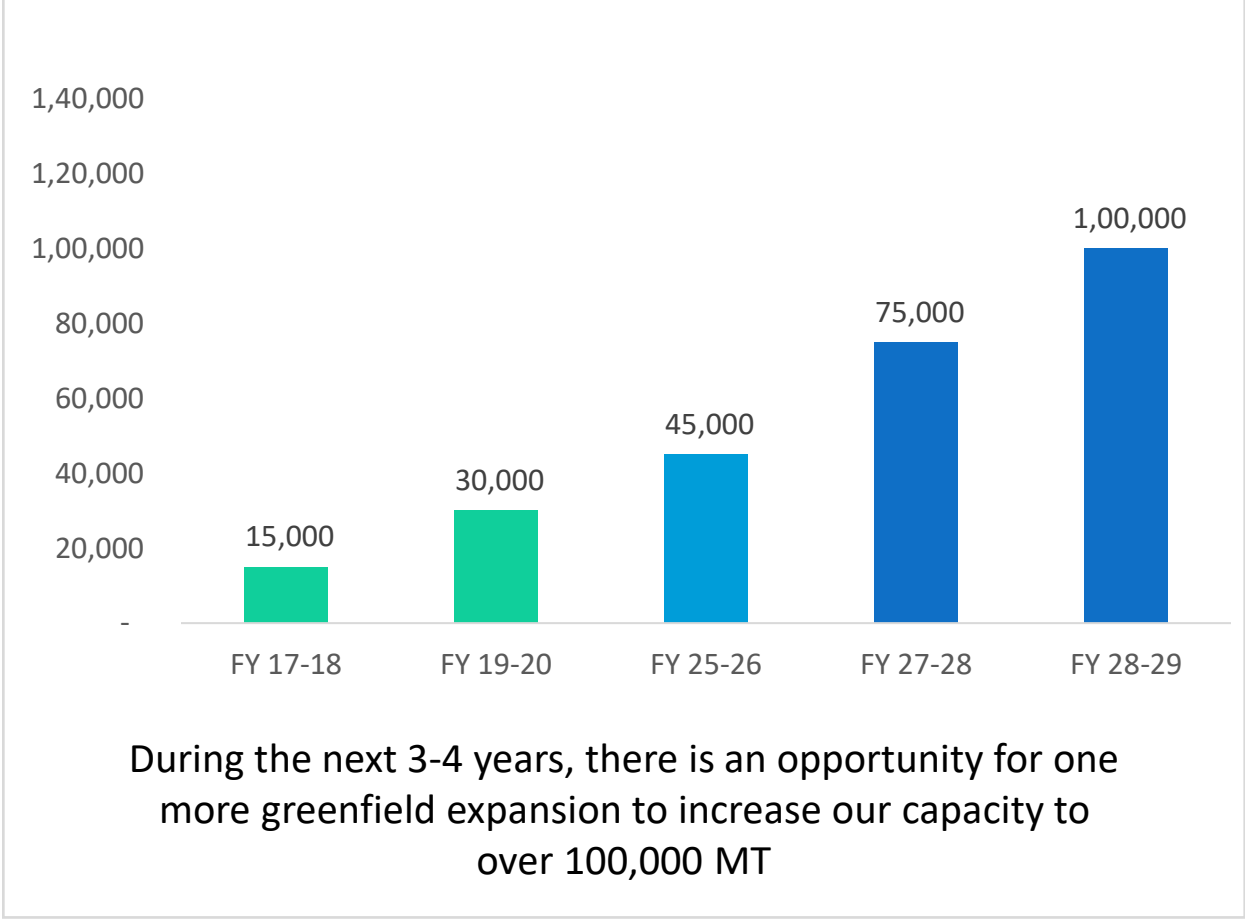


Export revenues are projected to remain stable, close to the previous year



PBDIT margins expected to expand by over another 100 bps from previous year, supported by partial contributions from strategic ongoing investments.

Medium Term Capacities (MT/Annum)



Thank You!