

8th August, 2025

To,
Department of Corporate Services
BSE Limited
P J Towers, Dalal Street,
Mumbai – 400 001

Security Code : 542460
Security ID : ANUP

To,
Listing Department
National Stock Exchange of India Limited
Exchange Plaza, 5th Floor, Plot No. C/1,
G. Block, Bandra-Kurla Complex
Bandra, Mumbai – 400 051

Symbol : ANUP

Dear Sir/Madam,

Sub: Investor Presentation for Institutional Investor/Analyst Meet to be held on 11th and 12th August, 2025 for Ambit Singapore Conference

Ref.: Regulation 30 of the SEBI (Listing Obligations and Disclosure Requirements) Regulations, 2015

Pursuant to Regulations 30 of the SEBI (Listing Obligations and Disclosure Requirements) Regulations, 2015, we enclose herewith Investor Presentation issued by the Company in respect of Institutional Investor/Analyst Meet to be held on 11th and 12th August, 2025 for Ambit Singapore Conference at Singapore. The copy of Investor Presentation will also be made available on Company's website i.e. <https://www.anupengg.com/quarterly-report/>.

Kindly take the same on your records.

Thanking You,

Yours faithfully,
For, The Anup Engineering Limited

Lay Desai
Company Secretary
Membership No.: A57117





The Anup Engineering Ltd.

Investor Presentation

11-12th August 2025 | Singapore





SAFE HARBOR

Certain statements contained in this document may be statements of future expectations and other forward looking statements that are based on management's current view and assumptions and involve known and unknown risks and uncertainties that could cause actual results, performance or events to differ materially from those expressed or implied in such statements. None of The Anup Engineering Limited or any of its affiliates, advisors or representatives shall have any liability whatsoever (in negligence or otherwise) for any loss howsoever arising from any use of this document or its content or otherwise arising in connection with this document.

This document does not constitute an offer or invitation to purchase or subscribe for any shares and neither it nor any part of it shall form the basis of or be relied upon in connection with any contract or commitment whatsoever.



CONTENTS

1. Introduction
2. Our Capabilities
3. Our Critical Executions
4. Environment, Health and Safety
5. Financial Performance
6. Annexures: Q1 FY26 Result



01 INTRODUCTION



ABOUT THE GROUP

Arvind Limited is the flagship and foundation of a \$1.7B group with four listed entities.



\$987 Mn
in revenues

- Denim, Woven and Knitted fabrics
- Garments
- Advanced Materials (including Composites)
- Water and waste water solutions
- Telecom



\$547 Mn
in revenues

- Branded Apparel
- Accessories
- Speciality Retail



\$87 Mn
in revenues

- Engineered Heavy Process Equipment
- Heat Exchangers, Pressure Vessels etc.
- Serving Oil & Gas, Fertilizers, Petrochem and other industries



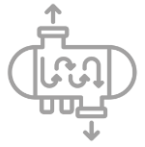
\$85 Mn
in revenues

- World class residential real-estate incl. apartments and weekend homes
- Commercial real estate such as factory sheds, warehouses and office spaces



62 YEARS OF EXPERIENCE (ESTABLISHED IN 1962)

Established in 1962 Anup Engineering is engaged in manufacturing an extensive product range, which includes:



Heat
Exchangers



Industrial
Centrifuges



Reactors &
Separators



Silos



Pressure Vessels
& Drums



Piping spools
and Custom
Fabrication



Columns &
Towers

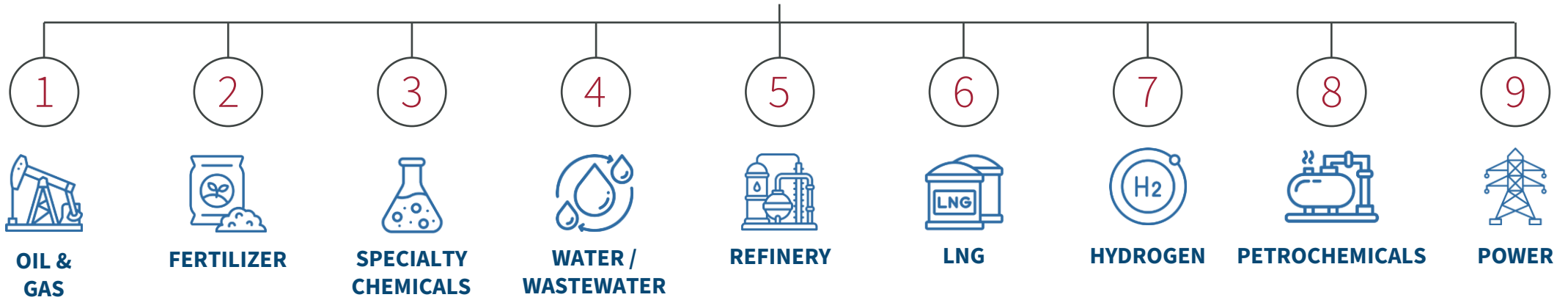
Listed company on Indian Stock
Exchanges (BSE & NSE)

Annual Sales in FY25

\$87 Mn



INDUSTRIES WE SERVE





OUR MANUFACTURING LOCATIONS

MANUFACTURING PLANTS ●

GUJARAT

- Ahmedabad
- Kheda

TAMIL NADU

- Chennai (Mabel Engineering, a 100% subsidiary of TAEI)

PORTS ●

WESTERN REGION PORTS

Distances to sea ports from Gujarat Location

KANDLA PORT - 350 km / 220 miles

MUNDRA PORT - 400 km / 250 miles

NHAVA SHEVA PORT - 550 km / 340 miles

EASTERN REGION PORTS

Distance to sea ports from Mabel

CHENNAI PORT - 50 Km / 30 miles

ENGINEERING CENTRE ●

GUJARAT

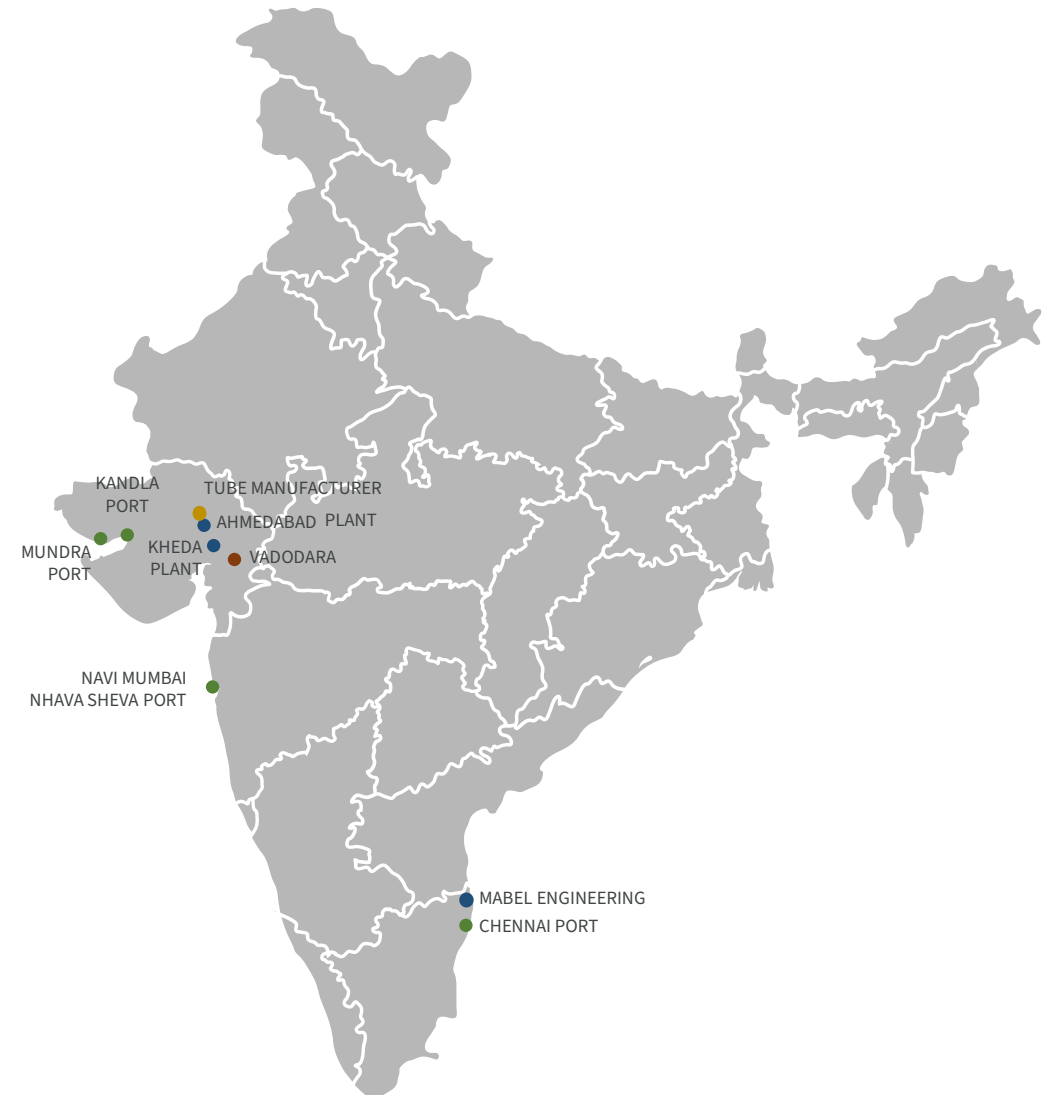
- Vadodara

TUBE MANUFACTURER ●

STRATEGIC LOCATION

CONNECTING TO ALL MAJOR
TUBE MANUFACTURERS

- 40 km / 25 miles (approximate)





MANUFACTURING PLANT: AHMEDABAD

HIGHLIGHTS

- Total shop area: 45,000 m²
- Covered area (under the hook): 23,000 m²
- Under the hook height: up to 15 m
- Maximum diameter: 5.5 m (Transportation Limitation)
- Production length: up to 50 m
- Weight capacity: up to 500 MT for single-piece equipment



ISO 8 Class Clean Room for
Exotic Material Fabrication (500 m² Area)



MANUFACTURING PLANT: KHEDA

HIGHLIGHTS

- Total shop area: 125,000 m²
- Covered area (under the hook): 10,000 m² PHASE 1+
- Under the hook height: up to 17 m
- Maximum diameter: 8.5 m (Transportation Limitation)
- Production length: up to 100 m
- Weight capacity: up to 1000 MT for single-piece equipment
- Operational from June 2023

Phase 1 (2 bays) - commissioned in June 2023

Phase 2A (2 bays) – Construction started on 1st Oct 2024

Phase 3 (3 bays) – Future Plan





MANUFACTURING PLANT: MABEL

HIGHLIGHTS

- Total shop area: 20,000 m²
- Covered area (under the hook): 5,100 m²
- Under the hook height: up to 10 m
- Maximum diameter: 5.0 m (Larger dimensions Site fab)
- Weight capacity: up to 75 MT
- U Stamp Certified
- Manufactures and qualified under EIL for SILOS.
- Has Site fabrication capabilities





OUR 02 CAPABILITIES



OUR ENGINEERING CAPABILITIES

At The Anup Engineering Limited, we pride ourselves on **our commitment to excellence and adherence to global standards**. As a leading engineering solutions provider, we recognize the importance of compliance with internationally recognized codes and standards. **Our expertise spans a wide range of regulatory frameworks**, ensuring that our designs and solutions meet the stringent requirements of various countries and industries. By staying up-to-date with the latest codes and standards, we deliver world-class engineering solutions that prioritize safety, quality, and reliability.

CODES AND STANDARDS

- ASME Sec I
- ASME Sec VIII Div. I & II
- EN 13445 / PED
- GOST R / TRCU
- IBR
- TEMA / API
- AD-2000 Merkblatt HP0
- CRN (Canada)
- ARH (Algeria)
- SAS (South Africa)
- NR 13 (Brazil)
- AS (Australia)
- DOSH (Malaysia)





OUR DESIGNING CAPABILITIES

Our team of experts boasts **specialized skills in Thermal & Mechanical Design, Vibration Analysis, Finite Element Analysis (FEA), and 3D Modelling**. This diverse range of expertise enables us to tackle complex engineering challenges with ease, providing our clients with comprehensive solutions that address their specific needs. Whether it's optimizing thermal performance, analyzing vibrational dynamics, or creating intricate 3D models, our team of specialists is dedicated to delivering precise engineering solutions that meet the highest standards of quality and accuracy.

SOFTWARE

- HTRI (Xist & X Vib; Version 8 SP3)
- ANSYS 18 & NozzlePRO
- PVElite
- Autopipe (Microprotol)
- PDS (Inventor)
- 3D PV
- AutoCAD





MANUFACTURING CAPABILITY: ROLLING AND CUTTING



200 mm thk Plate Rolling Machine



CNC Plasma Cutting – upto 300 mm CS



MANUFACTURING CAPABILITY: DRILLING AND MACHINING



100 mm thk CNC VTL



1500 mm thk CNC Deep Hole Drilling



MANUFACTURING CAPABILITY: WELDING



ESSC Strip Cladding



Orbital TTJ welding



Narrow Gap Welding (J-Groove)

MANUFACTURING CAPABILITY: HEAT TREATMENT AND SURFACE PENETRATION



Shot Blasting Booth

- 7.0 m x 7.0 m x 20.5 m
- 7.0 m x 10.0 m x 12.5 m



Painting Booth

- 8.0 m x 8.0 m x 25 m
- 7.0 m x 7.0 m x 10.50 m
- Humidity Controlled Painting Booth



Extendable Gas / Oil Fired Furnace

- 8.0 x 8.0 x 25.0 m
- 6.1 x 6.1 x 20.0 m (Extendable up to 40 m)
- **Normalizing Furnaces:** 1 No.
- **Temperature:** Up to 1050 °C / 1922 °F



QUALITY ASSURANCE: NABL APPROVED LAB AND NDT



Boroscope



Helium Leak Testing



TOFD - PAUT



EXCELLENCE IN METALLURGIES: MATERIALS WE CAN EXECUTE

We specialize in delivering superior quality fabrication and manufacturing solutions across a wide range of **metallurgies**, meeting the most demanding industrial requirements. Our expertise spans from Carbon and Low Alloy Steels to high-performance Stainless Steels and Special Grades, ensuring versatility, durability, and precision in every project.

LOW ALLOY STEEL

- 2.25 Cr 1Mo
- 9 Cr 1.0 Mo / V
- 1.25 Cr 0.5Mo
- 5 Cr 0.5Mo
- C 0.5 Mo
- 3.5% Ni

CARBON STEEL

- SA299 Gr B
- SA302 Gr B
- SA 516 Gr 60/65/70
- HIC / NACE
- SA387 Cl 1 & 2

STAINLESS STEEL

Austenitic

- 304/L
- 316/L/H/Ti
- 321 /347 /H

Super Austenitic

- 317/L
- 310/L

Duplex/Super Duplex

- 32750
- 31803/32205
- 32304 (LDX)

Martensitic

- 405/410 S

Ferrite

- 439

SPECIAL GRADES

- Cobalt Alloy
- Ti Gr. 1/2/7/16
- 2RE69 (25-22-2)
- 6% Mo (254SMo, N08367)
- Alloy 625 , 601, 693, 600
- Alloy 825, 800
- SS 904/904L
- Hastelloy C22/276
- Alloy 28
- Copper Nickel 70:30/90:10
- Monel 400
- BiMetallic



COLLABORATION AND LICENSES

LICENSES

POLYMERIZATION REACTORS
(Licensee), Germany



HELIXCHANGERS
(Licensee), Netherlands



EM BAFFLE HEAT EXCHANGERS
(Licensee), Italy

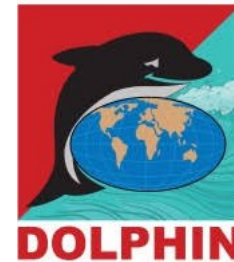


COLLABORATIONS

HEAT EXCHANGERS & PRESSURE VESSELS
(Manufacturing Collaboration), USA



ACHE, PLATE TYPE HEAT EXCHANGERS
(Marketing Collaboration), UAE





OUR CRITICAL 03 EXECUTIONS



HIGHEST THICKNESS HEAT EXCHANGER – 180 mm

HIGHLIGHTS

- Client: Nayara Energy Ltd (Essar Oil)
- Licensor: UOP Honeywell
- Hydro test pressure (kg/cm²) Shell side 170 / Tube side 136
- Shell side MOC: LAS Gr.22
- Tube side MOC: LAS Gr.22 + Inconel 625 WOL
- Thickness: Shell 85 mm / Channel 180 + 7 mm



HIGHEST PRESSURE EQUIPMENT 516 kg/cm²

HIGHLIGHTS

- Client & End User: ISRO
- ASME Sec VIII Div-2 Cl.2 with U2 stamp
- Cyclic service-Fatigue Analysis
- Shell thickness: 160+4.5mm
- MOC: CS+SS304 LWOL
- Hydro test at 516 kg/cm²





LONGEST EQUIPMENT 46 mtrs

HIGHLIGHTS

- Client: KT SPA, Italy
- Project: Luanda Refinery, Angola
- Column Length: 46.0m
- MOC: CS



BIGGEST DIAMETER SHOP EQUIPMENT 6.7 mtrs

HIGHLIGHTS

- Client: IFFCO Phulpur & Aonla
- Licensor: Casale
- Package of 4 nos. of CS + SS Clad vessels including internals
- Diameter: 6.7meter
- Length: 44meter
- Weight (max.): ~250MTeach
- ODC consignment supply and in-situ joint at site





HIGHER METALLURGY EQUIPMENT

SUPER DUPLEX CONDENSORS

- Client: Koerting
- Licensor: CLG
- Project: HPCL RUF
- Tube: SA789 S32750 seamless
- Kettle type shell with oval construction





HYDROGEN SERVICE EQUIPMENT

EQUIPMENT

- Pre-reformers & Reactors
- Heat Exchangers
- Pressure Vessels

PLANT TYPE

- Green H2 & Blue H2
- SAF (Sustainable Aviation Fuel) & Terminals

EXECUTED MULTIPLE ORDERS FOR HYDROGEN / SAF PLANTS

- NRL, IOCL Barauni, IOCL Panipat etc. in India
- World Energy Project, California, USA
- Edmonton Canada
- NEOM Saudi Arabia
- Darrow Blue Louisiana, USA

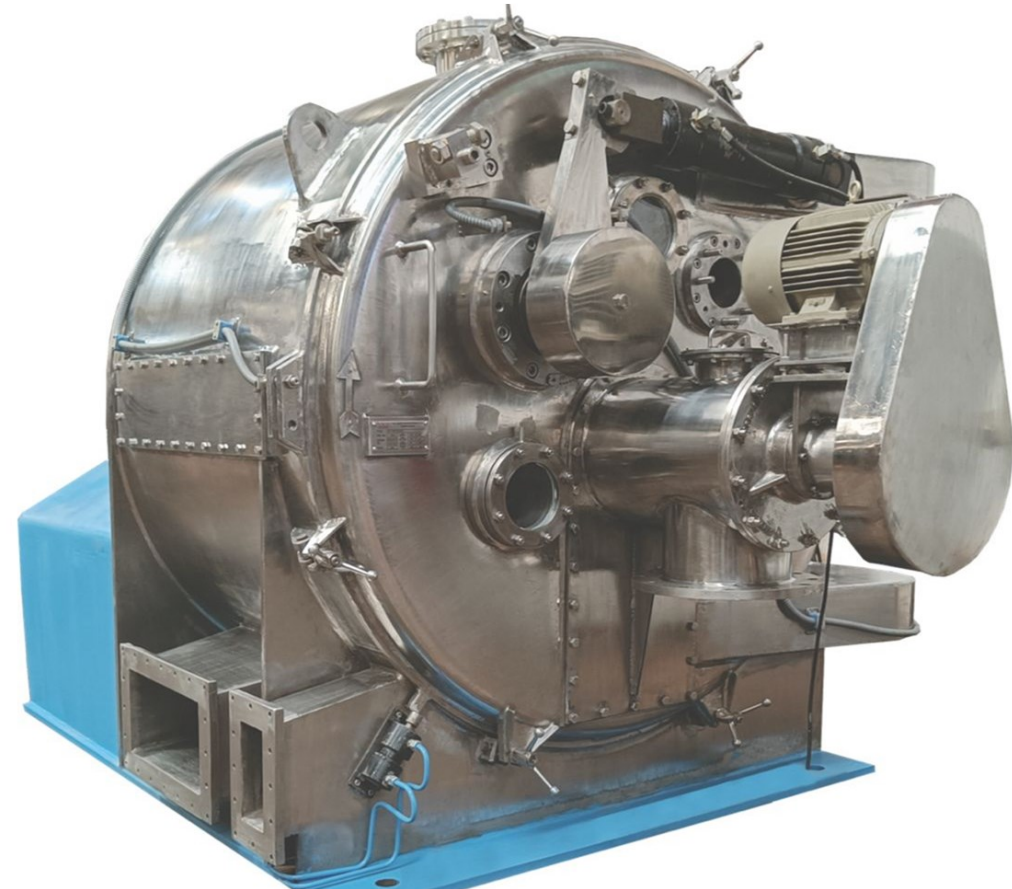




CENTRIFUGE

CENTRIFUGE FOR SPECIALITY CHEMICALS, STARCH, AGROCHEMICALS, SALT

- Clients: Solvay, Bluekraft, Sumitomo, Atul, Roquette, etc.
- Models : Peeler, Peeler with Siphon, Top Discharge, Bottom Discharge
- Customized Option for CIP, Nitrogen Purging available
- Size: Large Industrial Sizes
- More than 200 + Installations for over 4 decades



SILOS (TANKAGES)

SILOS FOR PVC , PET, SULPHUR, SUGAR STORAGE

- Clients: IOCL, BPCL etc.
- Stainless steel Silos
- 6 Nos. 550 m3 Silos with structure
- Option of Fully Built / Site Assembled





OUR GEOGRAPHICAL 04 SPREAD



GLOBAL INSTALLATIONS IN +30 COUNTRIES, WORLDWIDE





KEY LICENSORS





KEY END USERS / CUSTOMERS





KEY EPC COMPANIES





ENVIRONMENT, HEALTH AND 05 SAFETY



COMMITMENT TO HSE

HIGHLIGHTS

- ISO 45001:2018 Certification
- All employees incl. workers are covered by appropriate medical policies and insurance coverage
- In-house Occupational Health Centre with MBBS Doctor
- 24x7 Ambulance
- 1MW Roof Top Solar Power Plant
- 750 kW Wind Mill
- In-house STP & ETP Plants



30% renewable power used

through Solar and Wind Mills

Target to reach 60% renewable power by Q2 FY26

Zero waste water discharge



FINANCIAL 06 PERFORMANCE



FINANCIAL PERFORMANCE

PROFIT AND LOSS

In Mn USD

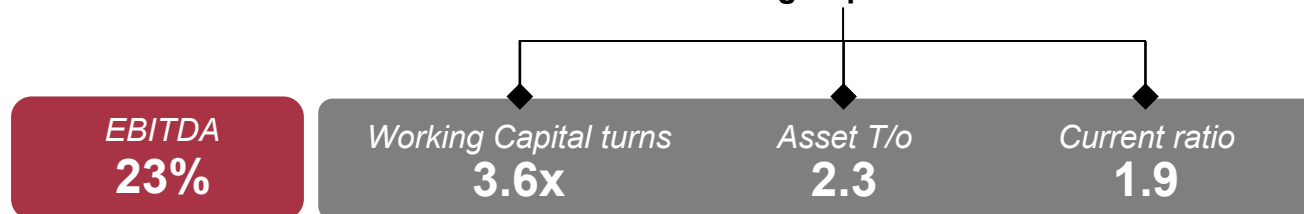
Particulars	FY21	FY22	FY23	FY24	FY25
Revenue	38	39	55	74	101
EBITDA	9	9	11	17	23
EBITDA [%]	25%	24%	20%	23%	23%
PAT	7	8	7	14	17
PAT[%]	19%	22%	12%	19%	17%

BALANCE SHEET

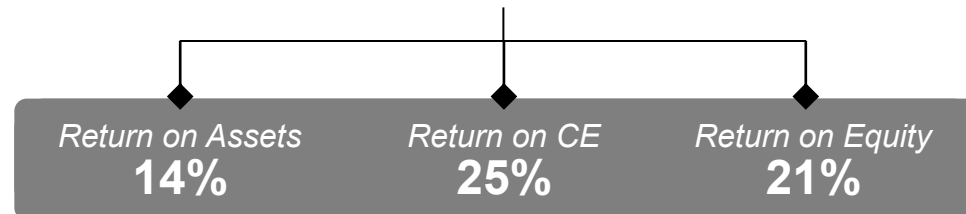
In Mn USD

Particulars	FY21	FY22	FY23	FY24	FY25
Liabilities					
Shareholders Fund	46	54	60	72	83
Borrowings	-	-	5	3	4
Other Liability	13	18	23	36	39
Total Liability	59	72	88	110	126
Assets					
PPE, ROU, Intangibles and CWIP	29	32	41	45	51
Cash and Cash Equivalents	3	7	4	3	2
Other Assets	26	33	42	62	73
Total Assets	59	72	88	119	126

Working Capital Ratios



Return Ratios





ANNEXURE:

07 Q1 FY26 RESULT



CONSOLIDATED SECTORIAL REVENUE SHARE IN Q1 FY26

% Shows share in Business



44%

Oil & Gas



3%

Hydrogen



6%

Fertilizer



32%

Petrochemicals



15%

**Chemicals (includes Paper & Pulp)
& Centrifuge & Silos**



FINANCIAL INDICATORS – CONSOLIDATED

INR in Crore

Particulars	Q1FY26	Q1FY25	Change	FY25
Revenue from operation	175.2	146.0	20.0%	732.8
EBIDTA	40.4	33.0	22.4%	165.2
EBIDTA %	23.0%	22.6%		22.5%
PBT	35.3	29.1	21.3%	143.2
PBT %	20.1%	19.9%		19.5%
PAT	26.3	24.0	9.6%	118.3
PAT %	15.0%	16.5%		16.1%
PAT W/O tax reversal	26.3	21.7	21.2%	114.8
PAT W/O tax reversal %	15.0%	14.7%		15.7%



FINANCIAL INDICATORS – STANDALONE

INR in Crore

Particulars	Q1FY26	Q1FY25	Change	FY25
Revenue from operation	169.4	144.3	17.4%	708.5
EBIDTA	39.4	32.7	20.5%	162.4
EBIDTA %	23.2%	22.7%		22.9%
PBT	34.4	28.9	19.0%	140.8
PBT %	20.3%	20.0%		19.9%
PAT	25.5	23.8	7.1%	116.7
PAT %	15.1%	16.5%		16.5%
PAT W/O tax reversal	25.5	21.5	18.6%	113.3
PAT W/O tax reversal %	15.1%	14.9%		16.0%



CONSOLIDATED REVENUE BIFURCATION

Product	Q1 FY26	
	INR in Crs	in %
Heat Exchangers	82.1	46.9%
Vessels	67.7	38.6%
Towers & Reactors	9.0	5.1%
Tank & Silos	5.8	3.3%
Centrifuge & Others	10.6	6.1%
Total	175.2	100.0%

Market	Q1 FY26	
	INR in Crs	in %
Domestic	49.5	28.3%
Exports	123.8	70.7%
DE/SEZ	1.9	1.0%
Total	175.2	100.0%



ORDERBOOK AND MARKET OUTLOOK

Product Category	INR in Crs	in %
Heat Exchangers	334.6	55.4%
Vessels	173.4	28.7%
Towers & Reactors	47.2	7.8%
Storage Tank & Silos	41.9	7.0%
Centrifuge & Others	6.50	1.1%
Total	603.6	100.0%

Market	INR in Crs	in %
Domestic	315.9	52.4%
Exports	269.5	44.6%
DE/SEZ	18.2	3.0%
Total	603.6	100.0%

HIGHLIGHTS

- Consolidated Orderbook as on 31 July 2025 is INR 604 Crore, which is available for billing in FY26.
- Current Inquiry pipeline of INR 1,020 Crore, which is expected to be closed in next 3 months.
- Now Phase-2(A) construction at Kheda is in progress with capex of INR 50 Crore, which will have TWO Bays (1 complete bay and 1 open bay) and likely to commission in Q2 FY26.
- Working capital usage has been at level of 2.90 times.



THANK YOU

www.anupengg.com

The Anup Engineering Limited

Behind 66 KV Electric Sub station, Odhav Road,
Ahmedabad – 382415, Gujarat India

Investor Relations Team:

Mr. Satya Prakash Mishra

Head of Investor Relations

Email: satyaprakash.mishra@arvind.in

M: +91 7036228882

T: +91 79 4025 8900

Email: investorconnect@anupengg.com

Website: www.anupengg.com