



# *Jindal Steel and Power Ltd*

## *Investor Presentation*

3Q FY16 (Feb' 16)



<i>S No.</i>	<i>Content</i>	<i>Slides</i>
<b>1</b>	<b><i>Company Structure &amp; Management</i></b>	<b>3-12</b>
<b>2</b>	<b><i>Key Focus Areas for FY16</i></b>	<b>13-16</b>
<b>3</b>	<b><i>Overview &amp; Business Segments</i></b>	<b>17-27</b>
<b>4</b>	<b><i>Power Business</i></b>	<b>27-36</b>
<b>5</b>	<b><i>Global Ventures</i></b>	<b>37-47</b>
<b>6</b>	<b><i>Financials &amp; Operational Highlights</i></b>	<b>48-53</b>
<b>7</b>	<b><i>Key Initiatives &amp; Projects Update</i></b>	<b>54-58</b>
<b>8</b>	<b><i>Facilities at a glance</i></b>	<b>59-72</b>
<b>9</b>	<b><i>CSR Initiatives</i></b>	<b>73-80</b>
<b>10</b>	<b><i>Contact us</i></b>	<b>81</b>

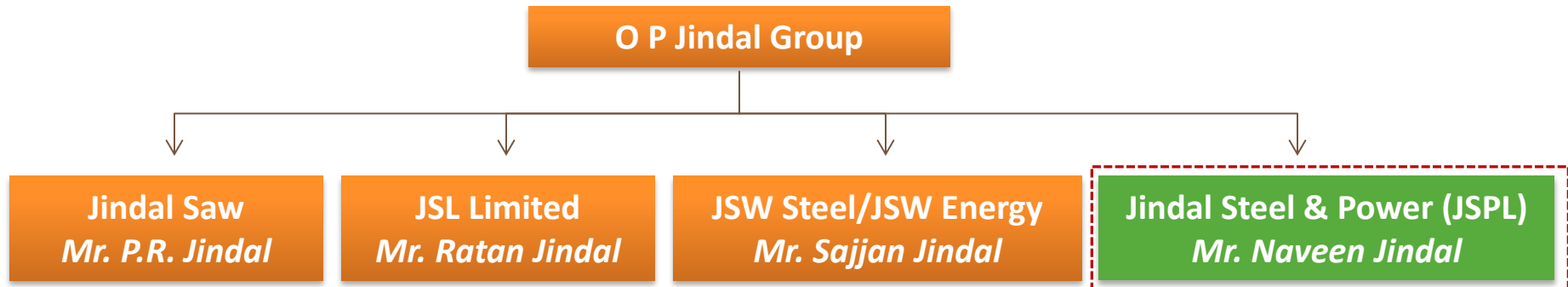
# *Jindal Steel & Power Limited*

## *Building the Nation of Our Dreams*

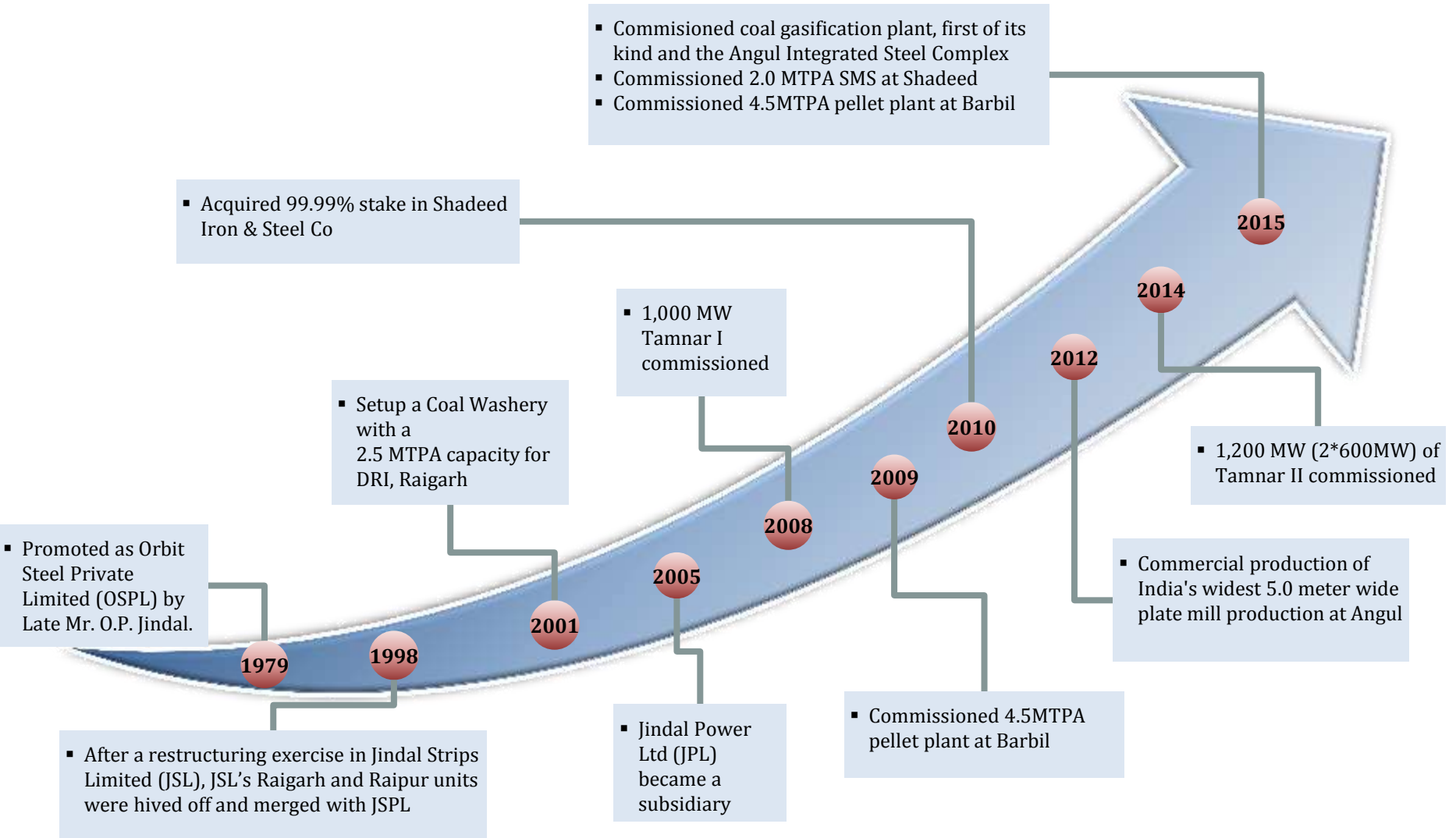




# Ownership Structure - O P Jindal Group



# Key Milestones during our journey





✓ Capex cycle completed – on path to achieve multifold earnings growth



✓ Projects at strategic locations – in proximity to raw materials, end markets and evacuation infrastructure



✓ A comprehensive diversified long products portfolio with several unique high value added products



✓ Amongst the lowest cost producers of steel and power in India

✓ 3,400 MW IPPs set up at extremely competitive project cost

## *What differentiates us...*

### Technological innovation

- Coal gasification plant – first time in India
- Conversion of EAF into BoF
- Hot Charge DRI and Slab

### Project execution track record

- Projects set up within record timeline and cost
  - 3<sup>rd</sup> Unit of 4x600 power plant synchronized in record time of 16 months
  - Barbil pellet plant of 4.5 MTPA in 23 months
  - Oman 1.5 MTPA DRI project commissioned 4 months before schedule
  - Oman 2.0 MTPA SMS commissioned in 23 months

Superior asset quality and business model

# *What differentiates us...*

## Lowest cost producer

- Low cost of steel manufacturing on account of
  - Captive power supply and
  - Low logistics overhead due to strategic plant locations
- Power projects set up at extremely competitive project cost

## Integrated operations

- Presence across the entire steel making value chain
- Own railway siding at each of the plants

Superior asset quality and business model





**Ravi Uppal**  
*MD & Group CEO*

- Experience: >36 years
- Qualification: MBA (IIM – A)



**Ratan Jindal**  
*Non Executive Director*

- Vice Chairman & MD (Jindal Stainless Limited)
- Qualification: MBA (Wharton School of Management)




**Naveen Jindal**  
*Chairman*

- Experience: 21 years
- Qualification: MBA (University of Texas)



**Shalu Jindal**  
*Non Executive Director*

- Director of Jindal Power Limited



**R.V. Shahi**  
*Independent Director*

- Experience: >33 years
- Qualification: MBA
- Former Power Secretary



**Arun Kumar Purwar**  
*Independent Director*

- Experience: >30 years
- Qualification: M.Com
- Former CMD, SBI



**Arun Kumar**  
*Independent Director*

- Experience: 38 years
- Qualification: MSc



**Haigreve Khaitan**  
*Independent Director*

- Experience: >18 years
- Qualification: LLB




**Hardip Singh Wirk**  
*Independent Director*

- Experience: >11 years
- Qualification: LLB



**Chandan Roy**  
*Independent director*

- Experience: 40 years
- Qualification: Mechanical Engineering



**Rajeev Bhadauria**  
*Whole time director*

- Experience: 28
- Qualification: LLB



**Dinesh Kumar Saraogi**  
*Wholetime Director*

- Experience: 32 years
- Qualification: Mechanical Engineering



**Shalil Mukund Awale**  
*Nominee director*

- Experience: 18 years
- Qualification: Chemical Engineering



**Sudershan Kumar Garg**  
*Independent Director*

- Experience: 39 years
- Qualification: Bcom & CA



**Anand Goel**  
*Chief Advisor*

- Experience:  
>36 years



**K. Rajagopal**  
*Group CFO*

- Experience:  
>30 years



**Rajesh Bhatia**  
*CEO-Global  
business*

- Experience:  
>25 years



**VK Mehta**  
*Director, S&M*

- Experience:  
>36 years)



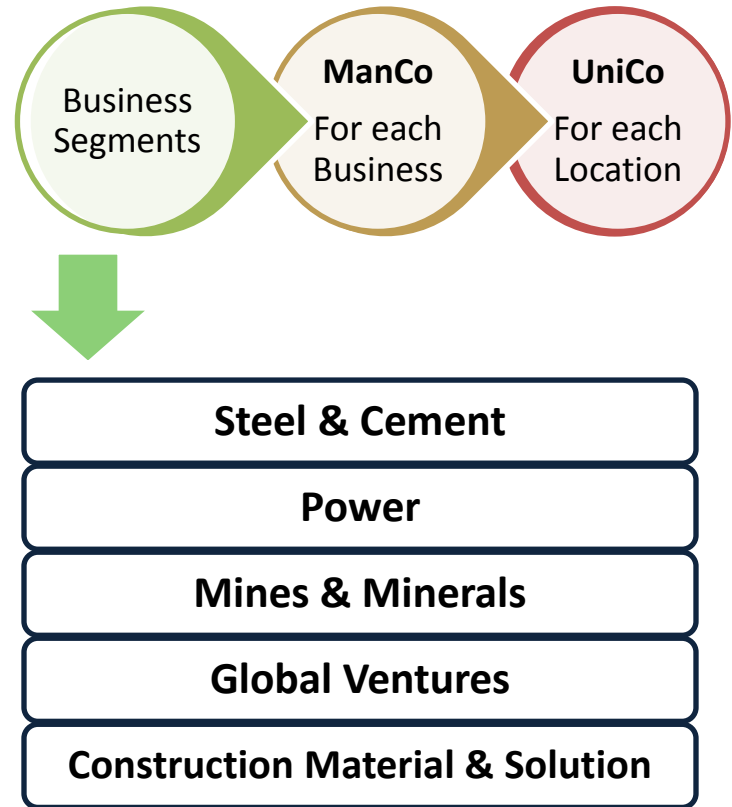
**N.A. Ansari**  
*CEO, Oman*

- Experience:  
>38 years.

## Strategic Governance Structure



## Operational Governance Structure



## Implementation of Strategic & Operational Governance Structure

	31-Mar-13	31-Mar-14	31-Mar-15	30-Jun-15	30-Sep-15	31-Dec-15
Promoters	59.13%	60.41%	61.29%	61.34%	61.89%	61.89%
Institutional Investors*	27.45%	26.45%	22.66%	21.91%	19.53%	22.35%*
Public and other share holding	13.42%	13.14%	16.05%	16.75%	18.58%	15.76%
<b>Total</b>	<b>100.00%</b>	<b>100.00%</b>	<b>100.00%</b>	<b>100.00%</b>	<b>100.00%</b>	<b>77.65%</b>
Number of share holders	1,32,311	1,35,593	1,66,370	1,75,291	1,85,993	1,76,047





# *Key Initiatives for FY16*

**Capacity Utilization**

**Operational Efficiency**

**Financial Prudence**

## Focus Area

### Steel Business

- Ensure full capacity utilization
- Increase operational efficiency of all processes
- Focus on “Value added” products
- Reduction of Product costs
- Thrust on Heavy Fabrication business
- Realign machinery division business and business alliances for augmentation of capability
- Commission Rebar mill in Angul

### Power

- Securing Raw Material – Coal Mines / Linkages Auctions , Spot E-auctions
- Ensuring High availability of plants – Minimize Operational risks
- Maximizing Capacity Utilization
- Securing Power tie-ups , particularly those requiring immediate supply of power

## Focus Area

### Mines & Minerals

- Two pronged sourcing of iron ore – From own mines as well as local miners through long term alliance
- Sourcing of Thermal coal from own overseas mines; coal linkage and e-auction.
- Reduce logistics cost for inward movement of Coal & Iron ore fines
- Import Coking coal from the most economical sources

### General

- Reduce Working capital – Receivables & Inventories
- Exploring options to reduce interest costs
- Skill Enhancement to enable multiskilling & productivity improvements

## India will continue to grow & Consume More Steel

- India's per capita steel consumption at 59.4 Kg below World average of 217 Kg (2014)\*
- Consumption of steel products is bound to increase with economic growth.
- Key initiatives being undertaken by Government would propel Steel demand:
  - Housing for all by 2022
  - “Make in India” lead to localization of manufacturing
  - 24x7 Power for All initiative by 2019
  - 100 Smart Cities by 2022
  - AMRUT, Bullet Trains & Metro Rails, Railway Corridors, Dedicated Freight Corridors
  - 175,000 MW Clean-Energy initiative by 2022



Steel

Power

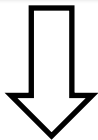
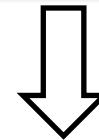
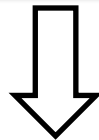
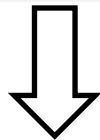
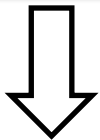
Mines & Minerals

Global Ventures

Construction Material & Solution



## Current Capacities – Domestic & Global



4.75 MTPA Steel\*

IPP – 3400\*\* MW  
 CPP – 1649 MW  
 Renewable – 24 MW

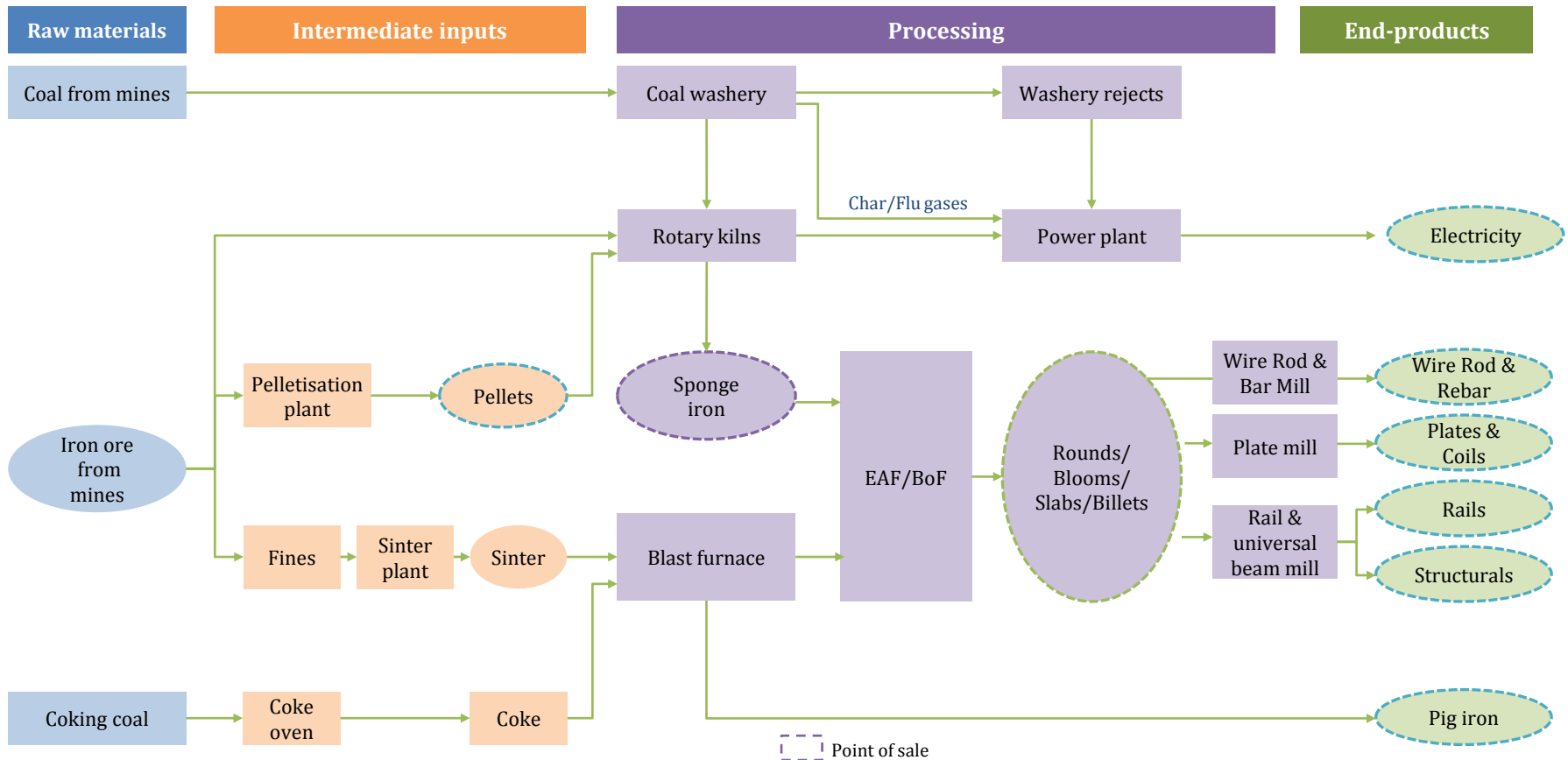
3.11 MTPA\*

2 MTPA Steel  
 6.25 MTPA Mines

Cement  
 Road solutions  
 LGS

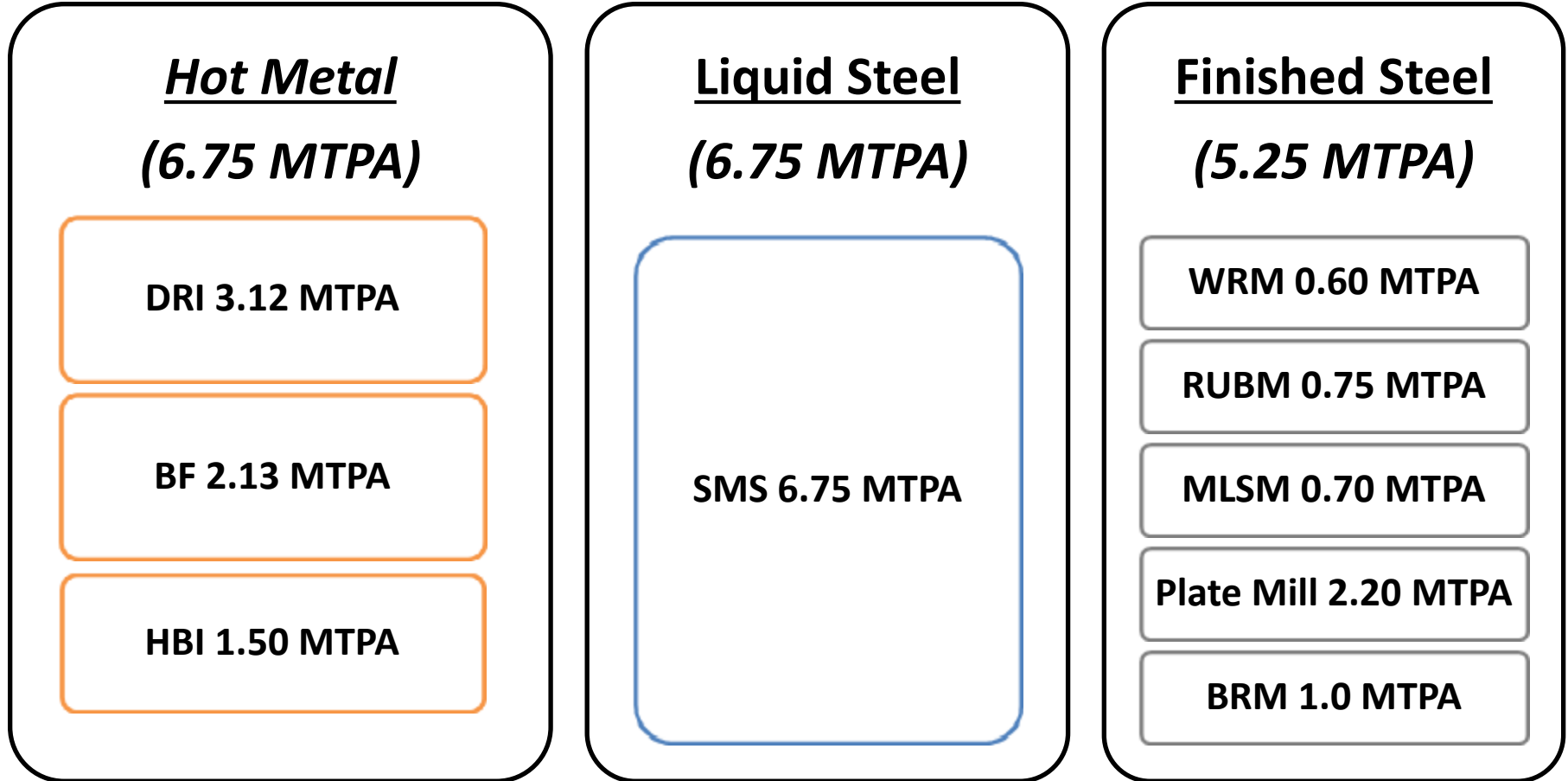
• Domestic  
 \*\*Includes 600 MW - synchronized & will be commissioned in FY16

## Integrated Operations with multiple point of sale

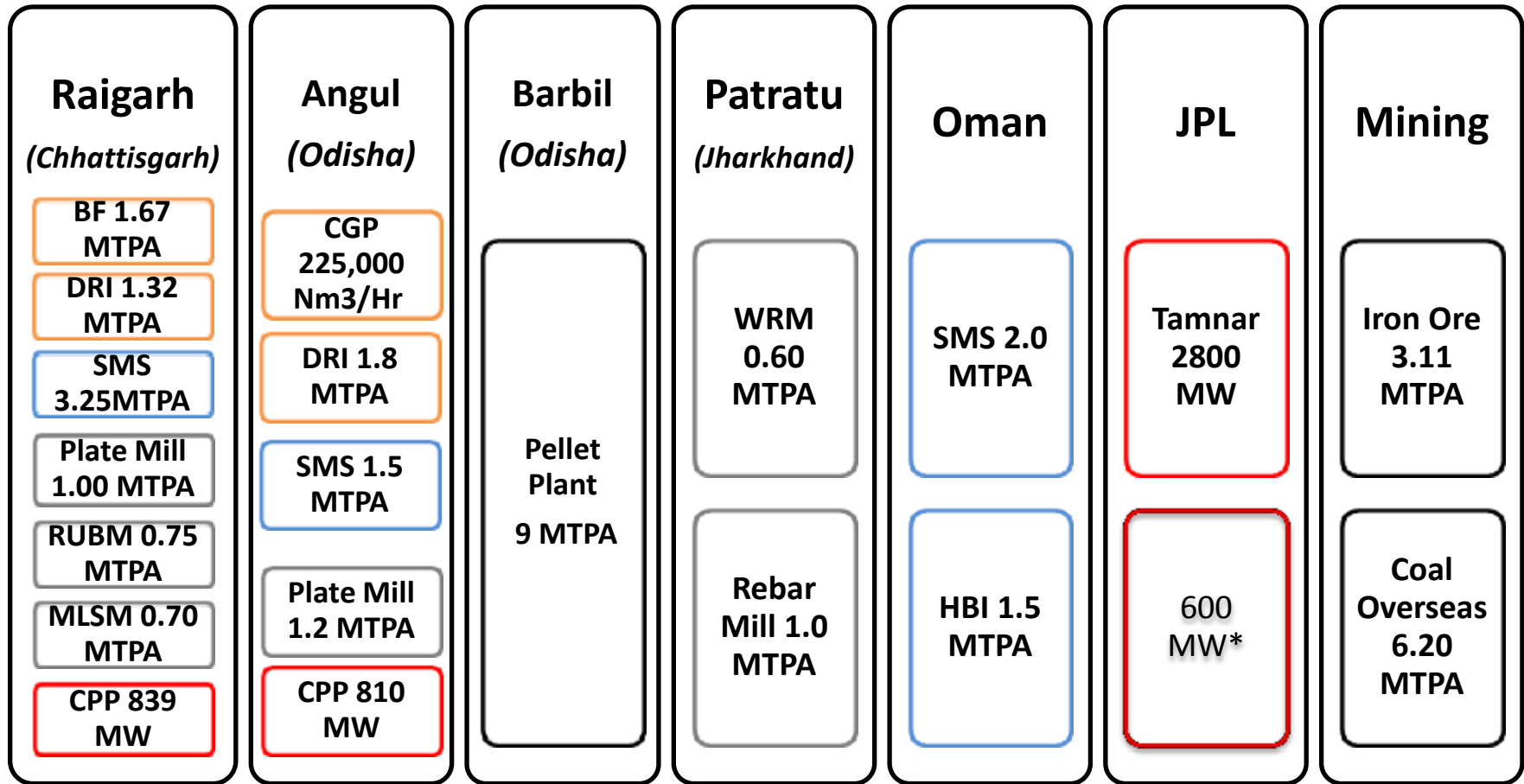


Multiple sale points across steel value chain

# Steel Capacities across Life Cycle



**BRM 2.8\* - Will be commissioned by 1QFY17 → Effective Finished Steel 8.05 MTPA**



Power   
  Hot Metal   
  Liquid Steel   
  Finished Steel

\*\* To be commissioned



# JSPL Product Range



*Angles and Channels*



*Fabricated Structures*



*Hot Rolled Plates and Coils*



*Parallel Flange Beams*



*Rails*



*TMT Rebars*



*Wire Rods*



*Power*

# Value Added Products – help in higher Turnover & EBITDA margins



Cement



Cut & Bend



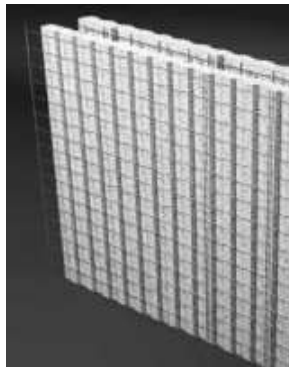
Welded Mesh



Speed Floor



LGS



EPS Panels



Road Stabilizer



Bricks & Pavers

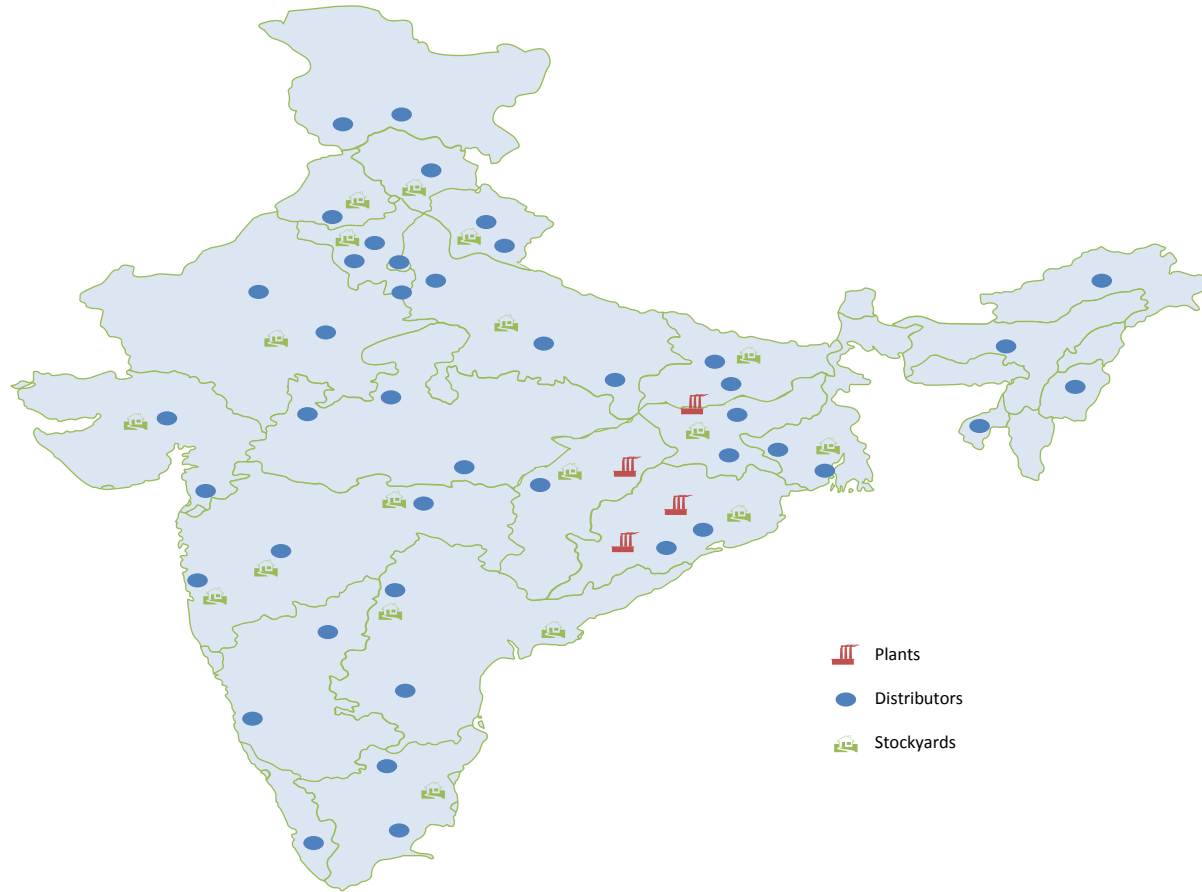


LWA

# *THE PANTHER ADVANTAGE*

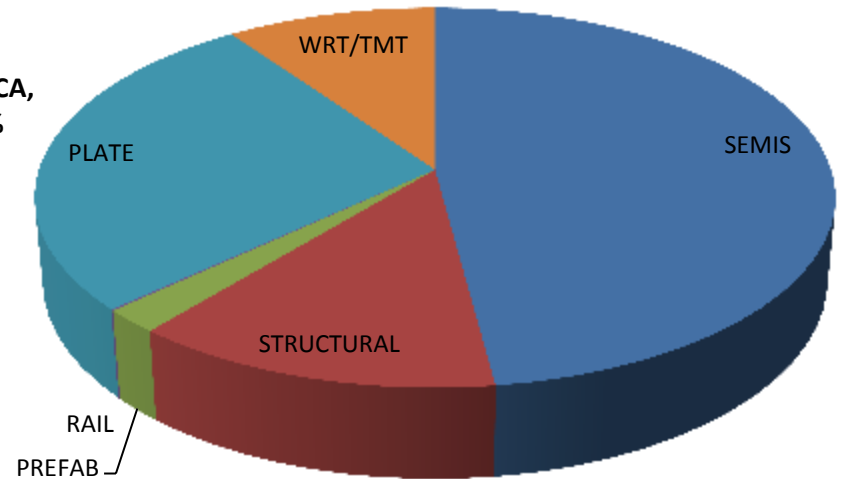
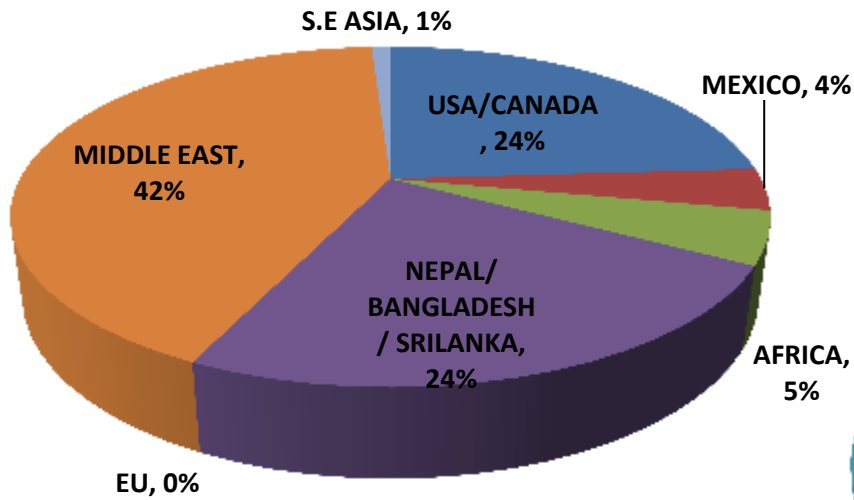
## *Construction TMT Rebars*

- ✓ Compelling Brand Recall
- ✓ Customer centric B2C Model
- ✓ Panther epitomizes strength & agility – the brand promise
- ✓ Jindal Panther – USP
  - ✓ Excellent bonding with cement
  - ✓ Uniform Parallel Rib Pattern
  - ✓ Earthquake Resistant
  - ✓ Corrosion Resistant
  - ✓ Greater Resistance to Fire



Pan India presence with multiple customer touch points

# COUNTRY / PRODUCT WISE PERFORMANCE 2014 -15






Customer base comprising large public and private sector clients

# *POWER BUSINESS*



# Power Capacities at a glance



## Independent Power Projects (IPP)

Project	Capacity (MW)	Fuel	Configuration	Status
Tamnar 1 <sup>(a)</sup>	1,000	Coal	4x250 MW	Operational
Tamnar 2 <sup>(a)</sup>	2,400	Coal	4x600 MW	1,800 MW operational, balance 600 MW synchronized
Satara <sup>(b)</sup>	24	Wind	18x1.5 MW	Operational

## Captive power projects (within JSPL)

Project	Capacity (MW)	Fuel	Configuration	Status
DCPP, Raigarh	540	Coal	4x135 MW	Operational
J SPL, Raigarh	299	Coal & waste heat	2x25 MW & 40 MW (Waste heat) 2x55 MW 3x25 MW 24 MW	Operational
Angul, Odisha	810	Coal	6 x135 MW	Operational

One of the largest thermal portfolios in India



**96.43% subsidiary of JSPL**



**EUP - I**

**1000MW (4 X 250)**

**EUP - II**

**1200MW (2 X 600)**

**EUP - III**

**1200MW (2 X 600\*)**

**\*600 MW Synchronized, Await Commissioning**

# Key Contractual Arrangements for JPL

		Tamnar-I, 1,000 MW (EUP I)	Tamnar-II - 1,200 MW (EUP II)	Tamnar-II - 1,200 MW (EUP III)
FSA		<ul style="list-style-type: none"> <li>Awaiting clarity on Tara Coal Block</li> <li>In the interim, coal sourced through – market purchase and e-auction</li> </ul>	<ul style="list-style-type: none"> <li>Long term linkage from Mahanadi Coal Limited (MCL) and South Eastern Coalfields Limited (SECL)</li> </ul>	<ul style="list-style-type: none"> <li>Awaiting clarity on Gare Palma IV/2 &amp; 3 Coal mine</li> <li>Market purchase and e-auction</li> </ul>
PPA		<ul style="list-style-type: none"> <li>Bilateral/short term/merchant</li> </ul>	<ul style="list-style-type: none"> <li>TNEB – 400MW</li> <li>CSEB – 60MW</li> <li>KSEB – 200MW</li> <li>KSEB – 150MW</li> </ul>	<ul style="list-style-type: none"> <li>CSEB – 60MW</li> </ul>
Evacuation		<ul style="list-style-type: none"> <li>258km transmission line from plant to national grid</li> </ul>	<ul style="list-style-type: none"> <li>TNEB, PPA full open access for 400MW from Oct 2015 post commissioning of 765KV Aurangabad Solapur line</li> </ul>	<ul style="list-style-type: none"> <li>Open access to be finalised against PPAs</li> </ul>

Raw materials, transmission & PPAs in place for achieving higher PLF



## PPA Arrangements

Project	Buyer	Type	Period		Quantum (MW)
			From	To	
Tamnar II (Phase 1)	Tamil Nadu	Long Term	Feb-14	Sep-28	400
Tamnar II (Phase 1)	KSEB	Long Term	Jun-16	May-41	200
Tamnar II (Phase 1)		Long Term	Oct-17	Sep-42	150
Tamnar II (Phase 1)	Chhattisgarh	Long Term	After commercial operation of Unit and for complete life of plant		60
Tamnar II (Phase 2)		Long Term	After commercial operation of Unit and for complete life of plant		60

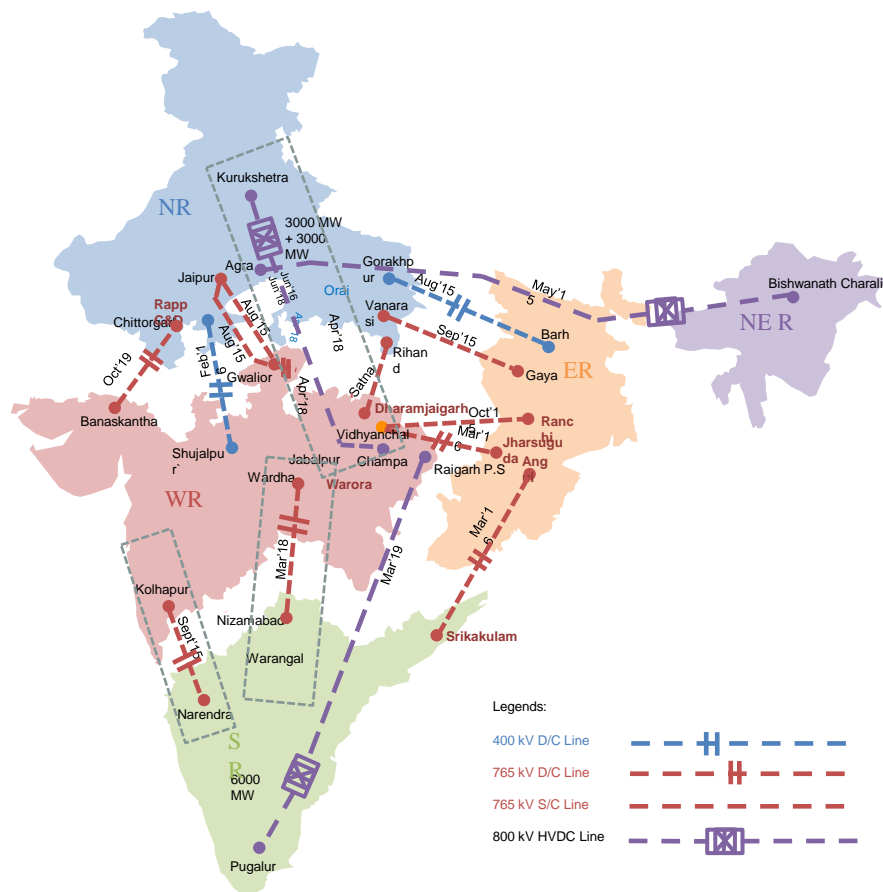
**Around 30% of total commissioned capacity tied up \***

## Upcoming PPAs

Procurer	Type	Quantum (MW)	Schedule delivery	Tenure (years)
Uttar Pradesh	Long Term	2,800	Oct-16	15
Bihar	Long Term	500	3 year after submission of RFP	NA
Uttar Pradesh	Long Term	1,000	Oct-16	15

**JPL - Well placed on account of low capital cost base**

# Upcoming Transmission Infrastructure



- Tamnar II (Phase 1):
  - ✓ 350 MW KSEB PPA, transmission corridor is expected from Jun-16
- Long term access from WR to NR granted for 557 MW is expected to be available by Jun-16 upon commissioning of Champa – Kurukshetra HVDC link (3,000 MW). This will be useful for power sale to UP
- No constraint in power evacuation to Western and Eastern Region entities including Bangladesh, where we have participated for 250 MW power supply

Transmission constraints expected to be resolved in the near term

Particulars	Net Sales (Million USD)	PAT (Million USD)	Generation (MU)	PLF
Year 2014-15	3,228	(171)	10636	93% (EUP 1)
Year 2013-14	2,457	1,107	8282	92%
Year 2012-13	2,510	1,113	7973	91%
Year 2011-12	3,040	1,765	8589	98%



## *JPL- Snapshot of Key Financials*

Particulars	2015-16		2014-15
	Q3	Q2	Q3
Turnover	815	889	825
EBITDA	186	168	414
<i>EBITDA%</i>	<i>23%</i>	<i>19%</i>	<i>50%</i>
PBT	51	61	(798)
PAT	38	45	(758)
Depreciation + Amortization	130	130	131
Cash Profit	171	178	-532
Generation (million units)	2,580	2,728	2699
PLF (%) - 4X250 MW	70%	60%	96%
PLF (%) - 3X600 MW	26%	35%	20%

***Inspite of merchant prices being soft, EBITDA improves due to operational efficiency & reduced coal cost in 3QFY16***



## JPL- Snapshot of Key Financials

Particulars	9 Months	
	2015-16	2014-15
Turnover	2,314	2,454
EBITDA	533	1,339
<i>EBITDA%</i>	<i>23%</i>	<i>55%</i>
PBT	148	(176)
PAT	109	(250)
Depreciation + Amortization	389	390
Cash Profit	506	155
Generation (million units)	7,184	7,944
PLF (%) - 4X250 MW	58%	96%
PLF (%) - 3X600 MW	28%	13%

# *GLOBAL VENTURES*



## Botswana, Africa

- Acquired CIC Energy in 2012 for 120 mn USD
- Coal Mine with Resource of over 3 bn MT (high grade thermal coal)

## Shadeed, Oman

- 1.5 MT HBI & 2 MT SMS Plant – plans to make it an Integrated Steel Plant

## Indonesia, Asia

- Medium to large size deposits of prime hard coking and low ash – low sulphur thermal coal for open-cast operation

## Mozambique, Africa

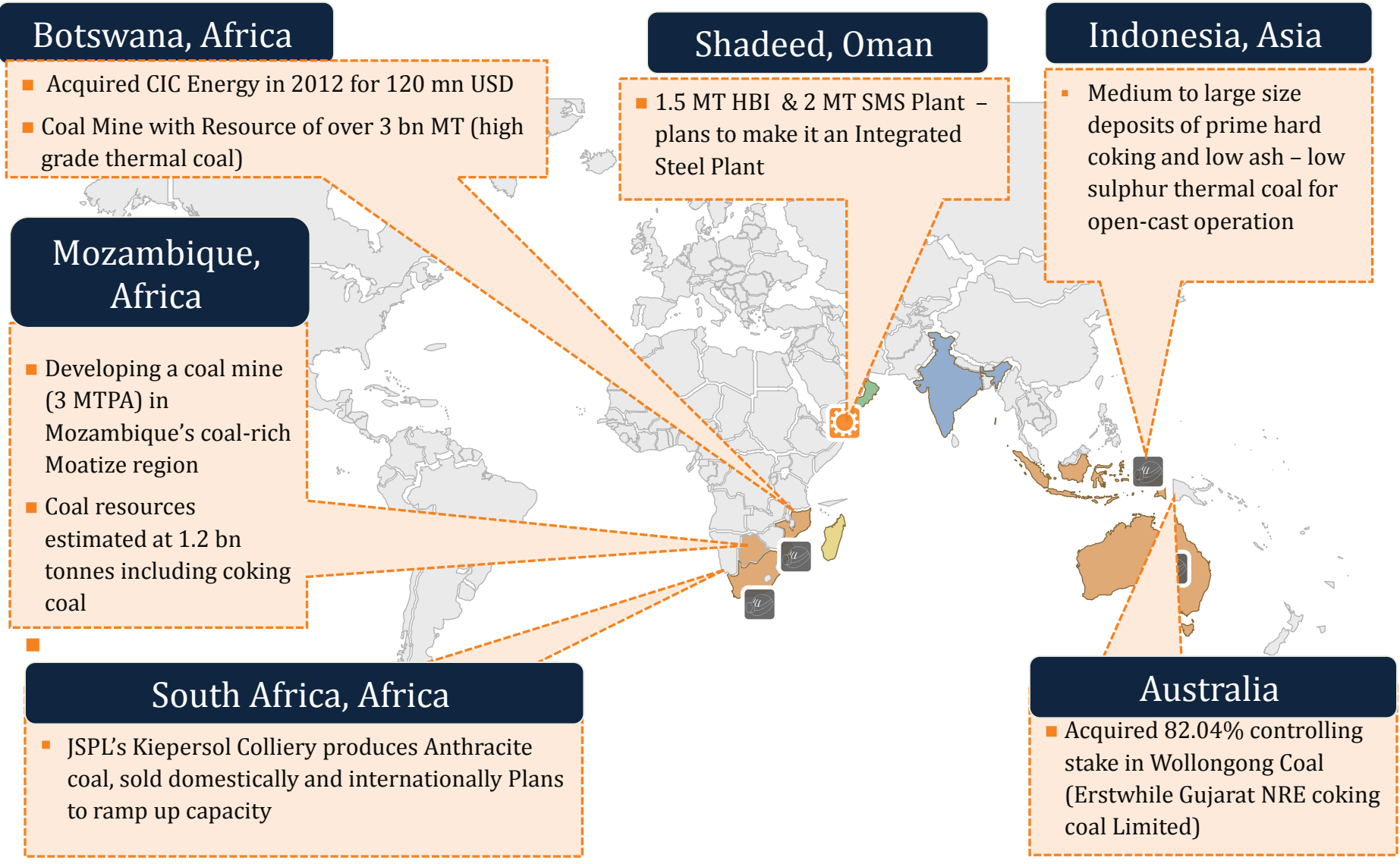
- Developing a coal mine (3 MTPA) in Mozambique’s coal-rich Moatize region
- Coal resources estimated at 1.2 bn tonnes including coking coal

## South Africa, Africa

- JSPL’s Kiepersol Colliery produces Anthracite coal, sold domestically and internationally Plans to ramp up capacity

## Australia

- Acquired 82.04% controlling stake in Wollongong Coal (Erstwhile Gujarat NRE coking coal Limited)



## *Holding structure for global operations*

**Jindal Steel & Power Ltd**

Listed Operating Entity in India

**Jindal Steel & Power (Mauritius) Ltd**

Holding company for overseas business

Oman

2 MTPA Steel plant

Australia

Coking Coal

South Africa

Anthracite Coal

Mozambique

Thermal/ Coking Coal

## Marching towards becoming a Fully Integrated Steel Plant



**1.5 HBI**



**2 MTPA SMS**



**1.4 MTPA Rolling Mill  
(By 4QFY16)**



## Oman - Salient Features

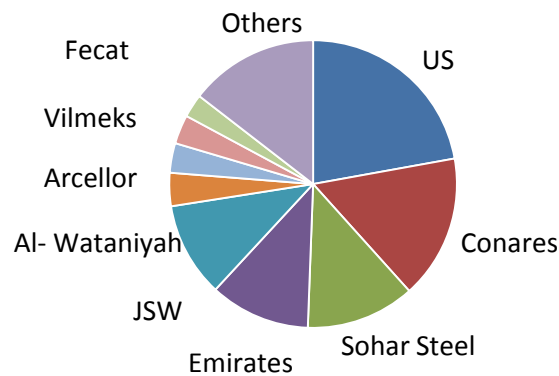
- First & Largest Integrated steel plant of Oman
- Third largest in Arabian Peninsula
- Port based steel plant
- Largest Arc furnace in Arabian Peninsula, with contracted natural gas
- Worlds Best Performing Midrex plant (category 1.5MTPA)
- Products : HBI, Blooms & Billets

## Sourcing of Raw Materials - Oman Plant

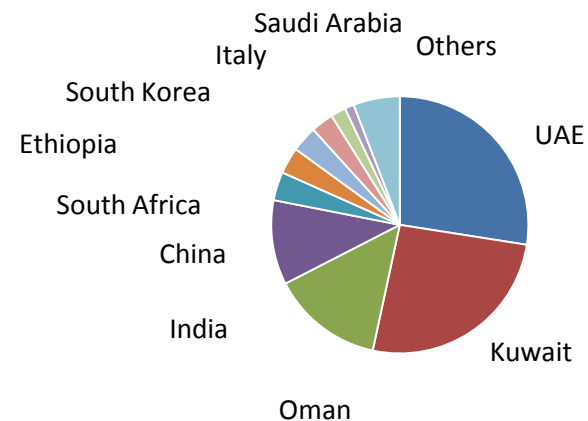
- Iron Ore Pellets from **Vale** (*Next door neighbour*)
- Natural Gas from Oman Government through long term contract (*at concessional prices*)
- Scrap from External Purchase

## Key Markets

Sales break up by customer (FY-15)



Sales break up by geography (FY-15)



## An Underground Anthracite and Lean Bituminous Coal mine



- **Location:** Piet Retief in Mpumalanga province, South Africa
- **Resources :** Up to 40 MT
- **Reserves:** 22 MT
- **Products :** Anthracite coal
- **Mining Capacity :** Can be expanded to 1.2 MTPA capacity annually

## Open Cut Coking & Thermal Coal Mine



- **Location:** Chirodzi, Mozambique (105 kms from Tete)
- **Resources :** 2,000 MT
- **Reserves:** 132 MT
- **Products :** Semi Hard coking coal , High Grade Thermal Coal
- **Mining Capacity :** 3 MTPA



# Mozambique - Salient Features



## Coking Coal Asset

Exploration License over 100 square kms.  
in Central Kalimantan

Medium to large size deposits of prime  
hard coking

## Thermal Coal Asset

- Large size deposit of low ash – low sulphur thermal coal for open cast operation
  - MoU signed with Bupati Barito to develop road for coal hauling
- Return load for 200,000 MT tonnages secured resulting in decrease of logistics costs
- Infrastructure developed in Moatize for storage and loading of coal into trains

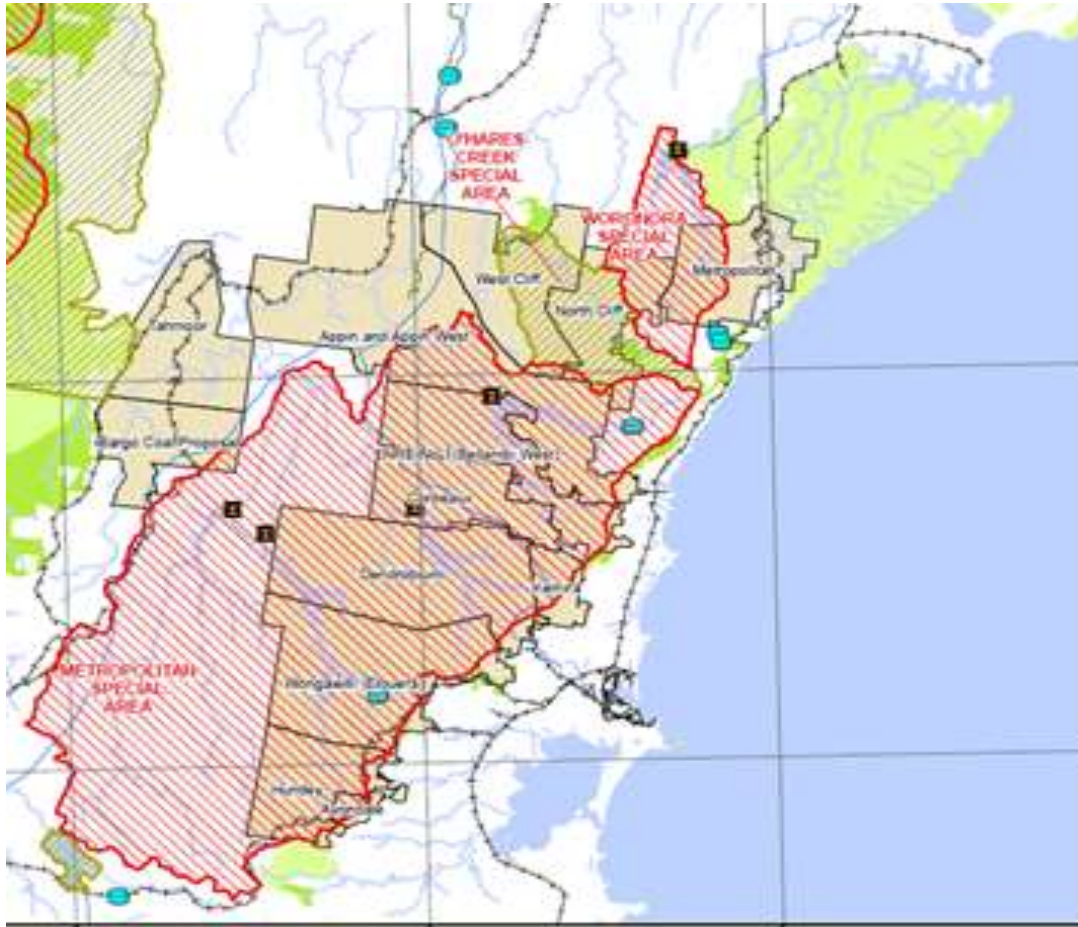


## Two Mines with Unique unmatched location & strategic advantages



- **Location:** Russell Vale & Wongawilli (Wollongong - 80 kms. South of Sydney)
- **Reserves :** 175 MT
- **Products :** High Quality Coking Coal
- **Mining Capacity :** Targeting 2 MTPA
- **Logistics :** Port Kembla - Less than 20 kms

# Australia - Salient Features



## ➤ Unique Geographic Location

- Wollongong  
(80 kms. South of Sydney)
- Experienced mining community available
- Port Kembla:  
Less than 20 kms with sufficient coal handling and Cape size capacity
- Easy and reliable connectivity through Rail and Road

**Unique unmatched location with significant strategic advantages**



# *JSPL – Financials & Operational Highlights*



	<i>FY10</i>	<i>FY11</i>	<i>FY12</i>	<i>FY13</i>	<i>FY14</i>	<i>FY15</i>
<b>INCOME STATEMENT</b>						
Revenue	11,152	13,194	18,351	19,807	19,286	19,401
EBITDA	5,232	6,398	6,935	6,669	5,776	5,483
PAT (Before Exceptionals)	3,635	3,804	4,002	2,912	1,894	457
PAT	3,635	3,804	4,002	2,912	1,894	-1,278
Cash Profit	4,760	5,115	5,575	4,593	3,876	2,064
<b>BALANCE SHEET</b>						
Gross Block	21,109	29,317	35,802	45,912	63,056	70,301
Net Worth	10,387	14,088	17,931	21,150	21,191	19,306
Net Debt	8,436	12,854	15,616	24,430	35,419	42,929
<b>SIGNIFICANT RATIOS</b>						
EBITDA Margin (%)	47	48	38	34	30	28
Net Profit to Sales ( <i>Before Exceptionals</i> )(%)	33%	29%	22%	15%	10%	2%
Net Profit to Sales ( <i>After Exceptionals</i> )(%)	33%	29%	22%	15%	10%	-7%
Return on Net Worth ( <i>Before Exceptionals</i> ) (%)	35%	27%	22%	14%	9%	2%
Return on Net Worth ( <i>After Exceptionals</i> ) (%)	35%	27%	22%	14%	9%	-7%
Long Term Debt Equity Ratio	0.59	0.7	0.61	0.77	1.29	1.83
EPS (INR/Share) ( <i>Before Exceptional</i> ) (a) (b)	39.1	40.8	42.4	31.1	20.5	5.0
EPS (INR/Share) (a) (b) ( <i>After Exceptional</i> )	39.1	40.8	42.4	31.1	20.5	-14.0

## Standalone 3Q FY 16 - Snapshot of Key Financials

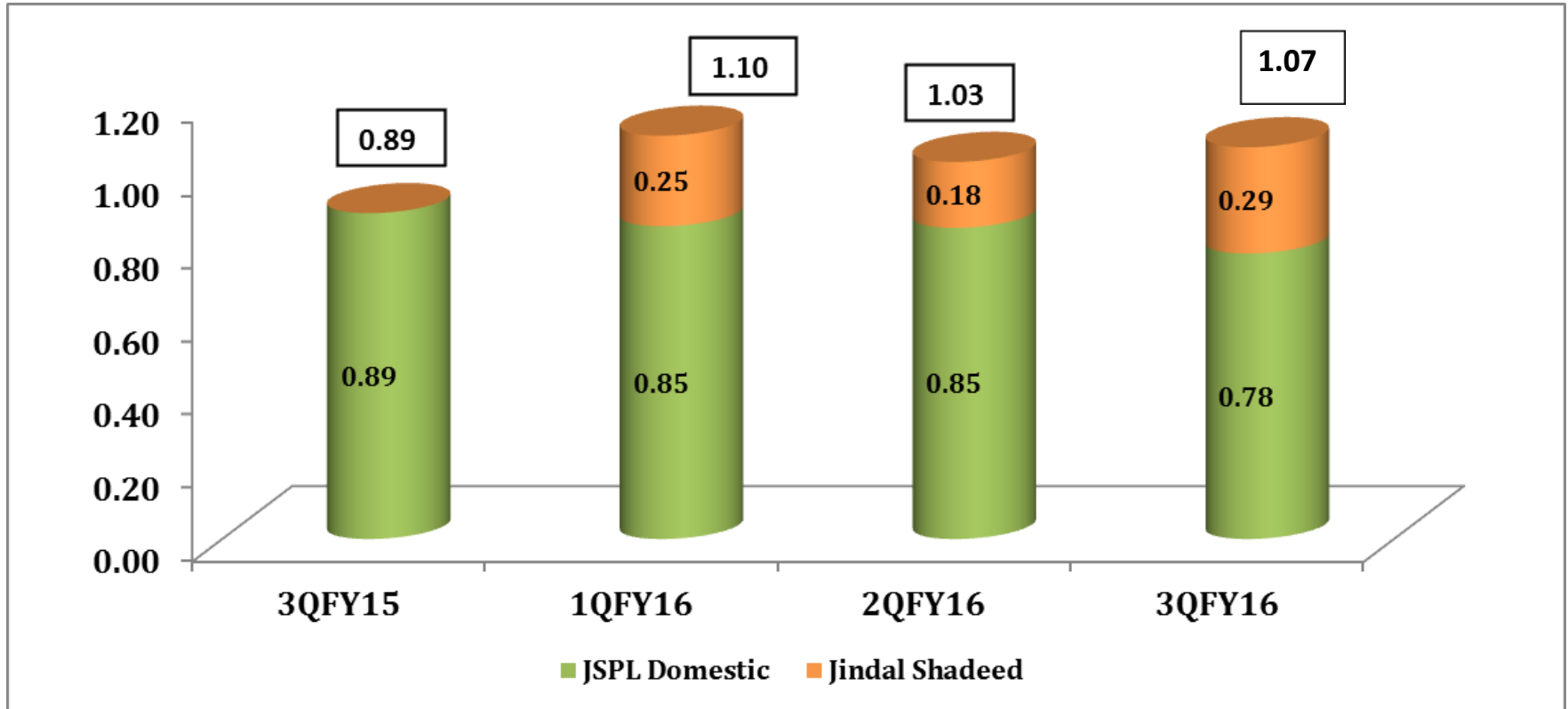
Particulars (Rupees in Crores)	For the Quarter ending			
	31.12.2015	30.09.2015	30.06.2015	31.12.2014
Total Revenue	2,944	3,181	3,148	3,549
EBITDA	422	641	724	1,034
EBITDA %	14%	20%	23%	29%
Depreciation	394	249	501	459
Finance costs	658	676	691	555
Profit/(loss) before Tax (PBT)	(629)	(282)	(428)	(767)
Tax	(226)	(79)	(160)	(97)
Profit/(loss) after Tax (PAT)	(403)	(204)	(267)	(670)



## Consolidated 3Q FY 16 - Snapshot of Key Financials

Particulars (Rupees in Crores)	For the Quarter ending			
	31.12.2015	30.09.2015	30.06.2015	31.12.2014
Total Revenue	4,362	4,719	4,458	5,073
EBITDA	550	988	1,048	1,453
EBITDA %	13%	21%	24%	29%
Depreciation	638	500	747	715
Finance costs	806	765	851	702
Profit/(loss) before tax & exceptional item	(889)	(253)	(506)	42
Exceptional item	(91)	439	-	1,855
Profit/(loss) before Tax (PBT)	(798)	(693)	(506)	(1,813)
Tax	(212)	2	(150)	(138)
Profit/(loss) after Tax (PAT)	(586)	(695)	(355)	(1,675)

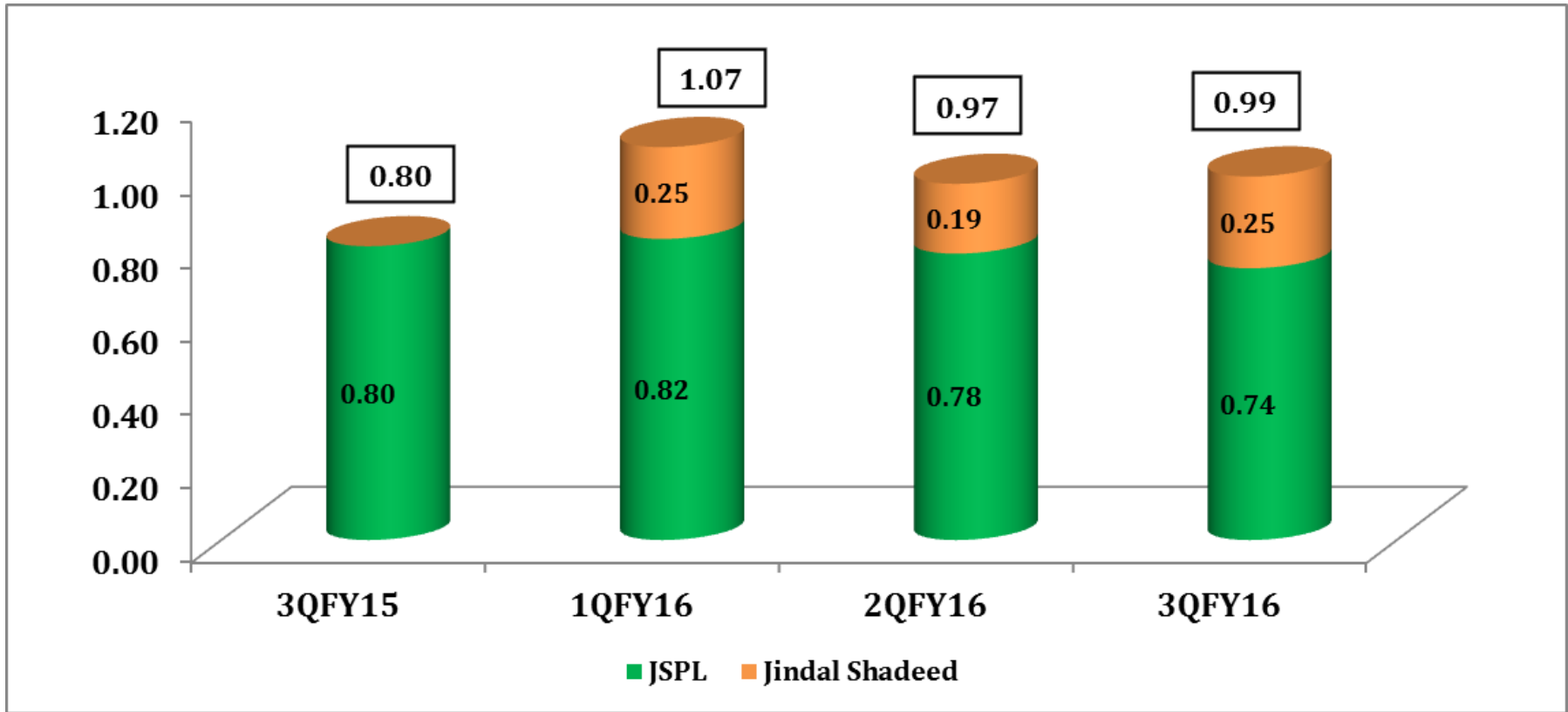
# Consolidated Steel Production



Total Steel Production up 19%\*



# Consolidated Steel Sales Volumes



Total Steel Sales volumes up 23%\* 

# Key Initiatives & Project Updates

## Despatch of 1<sup>st</sup> rake carrying 260m long rails



- JSPL welded and despatched 260 Meter long Rail Panels from its Raigarh Plant.
- Will be used in the Dedicated Delhi – Kolkata freight corridor.
- With this achievement, JSPL has entered into the highly competitive Long Rail segment which commands higher NSRs



## Converted : EAF to NEOF (Zero power furnace)



- JSPL has successfully converted one of its Electric Arc Furnace (EAF) to a basic oxygen type furnace.
- Would result in i) lower Thermal coal requirement (as more hot metal produced through Blast Furnace route will be used) ii) power savings and iii) eliminates consumption of Electrodes.
- This will result in substantial saving in our steel making (liquid steel) cost at Raigarh. .

## Centrade Business Park, Noida



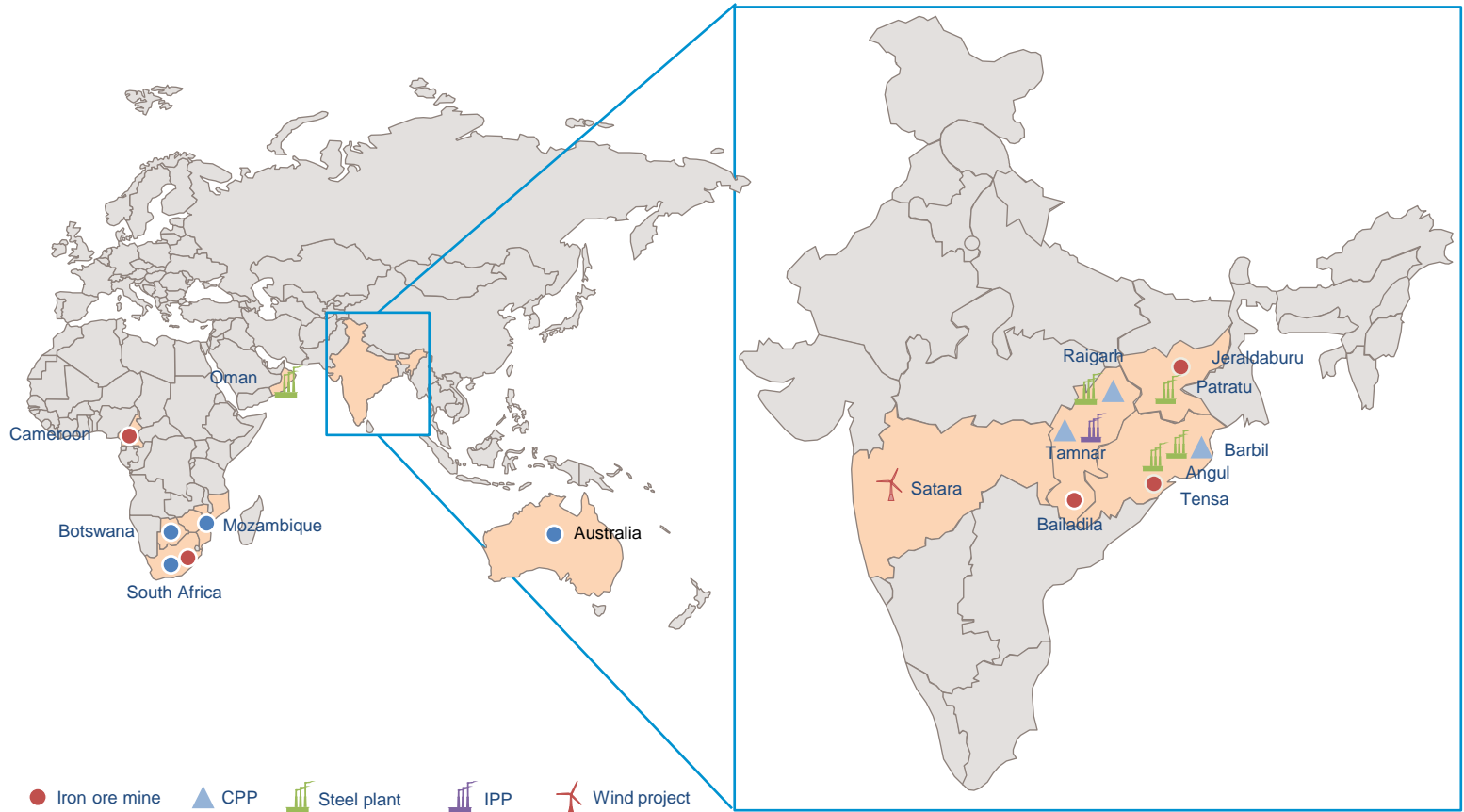


## Dharamshala Cricket Stadium



# Facilities at a glance

# Global Presence in attractive markets



Presence in resource rich regions well connected with evacuation infrastructure



# *Chhattisgarh State*

# *JISPL, Raigarh*















JINDAL  
PANTHER

*Jindal Power Ltd. – 4x600 MW - Tamnar*

JINDAL





# *Odisha State*







- *Developed steel grades for various critical applications like boilers, ship building, petroleum pipes, high strength grades for automotive and earth movers, structural steel for oil exploration platforms, grades for making warships , ballistic launch applications and bullet proof vehicles, stainless steel low thickness plates for nuclear application*

# *Pellet Plant, Barbil*



# *Jharkhand State*





## **Recent Awards & Recognitions**

- ***JSPL-Barbil Pellet Plant awarded with most prestigious JIPM award for TPM –Excellence***
  - ***First pellet plant in the world to be conferred with this JIPM award***
- ***Jindal Shadeed won following laurels***
  - ***Prestigious “Sultan Qaboos Award” for Industrial Excellence by the Ministry of Commerce and Industry on February 9, 2016***
  - ***2016 Steel Manufacturing Product Line Strategy Leadership Award, GCC”, at GIL 2016: Middle East, Dammam, Saudi Arabia on February 10, 2016***
- ***Jindal Shadeed have received 2 Awards from Midrex***
  - ***For the achievement of 5 Million tons of production within 4 years of Operation [2011 – 2014]***
  - ***For the achievement of Exceptional annual operational availability for the year 2014 - 98.51%. (Total 3 plants have received the awards out of 72 Midrex DR Plants in the world, and Jindal Shadeed stands number 2.)***
- ***JSPL Raigarh got placed in Limca book of world records’ for manufacturing longest 121 meter long single piece track rail***
- ***JPL received “Par Excellence Award for 5’S implementation” by QCFI on 7th Nov’15***





## 9 PILLARS OF CSR



### HEALTH

Establishing multiple charitable clinics, hospitals and providing world-class health facilities to its employees and communities.



### INFRASTRUCTURE DEVELOPMENT

Improve quality of life by reducing rural urban divide. Easy access to modern amenities and improve surroundings.



### ENVIRONMENT

Protecting the environment through JSPL's policies and practices.



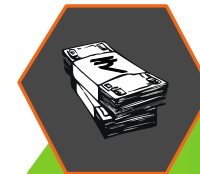
### EDUCATION

Capacity building through education and enabling environment for children to evolve as responsible citizens.



### LIVESTOCK

Improved animal husbandry practices for improve health status of livestock.



### ADMINISTRATIVE EXPENSES



### LIVELIHOOD

Development of self-dependency and encouragement for practical skills for individual community and long term prosperity.



### SPORTS, ART & CULTURE

Channelizing the energy of the youth towards the development of communities by giving opportunity in various activities.



### DOCUMENTATION MONITORING EVALUATION OTHERS



## HEALTH

31359

healthy girls

13945

smiles repaired

2162

children vaccinated

437

safe deliveries

## EDUCATION

8000

vocational trainings completed

5600

employment generated

1027

students provided mid day meals

475

scholarships granted for higher education

180

engineers employed

## INFRASTRUCTURE

9003

people connected by roads in various villages

3350

provided sanitation facilities

1300

enjoy comforts of electricity

1145

have access to safe & clean drinking water

## WOMEN EMPOWERMENT

3500

women entrepreneurs developed

85

farmers engaged in Pisciculture

80

artisans entered main market

11

traditional art families revived

## LIVESTOCK MANAGEMENT

Livestock gifted to village farmers

4500

poultry

1500

goats

430

sheep

Dairy farms established with

1350

cows

13

veterinary camps

## SPORTS, ART & CULTURE

300

budding players scouted and trained

42

villages combed for sports talent. Rural sports and youth clubs promoted

## ENVIRONMENT

260600

trees planted

3700

acres of watershed development

All locations practice rain water harvesting.

100% utilization of fly-ash in Raigard Unit.



## *Award and Accolades for JSPL (2014-15)*

- *National Award for Excellence in Energy Management 2014, CII*
- *National Award for Innovative Training Practices, ISTD Delhi, 2014*
- *Dun & Bradstreet – Infra Award 2014 in Power Category*
- *Chhattisgarh Industrial Health & Safety Award, Govt of Chhattisgarh, 2014*
- *Award for Innovative HR Practices, Global HR Excellence Awards, 2015*
- *Best CSR Practice – Education, Think Media Inc., 2014*
- *Project Excellence Award, Global Symposium, 2014*
- *Procurement Excellence Award: "Outstanding Leader in Procurement" at the 2nd Annual CPO Forum India & Awards 2014.*
- *Innovation in Employee Retention Strategies, Greentech Foundation, 2014*
- *2nd Best in Overall Mining – Mega Mines Group, Annual Safety Fortnight Competitions, 2015*

## Recent Award and Accolades for JPL



## 2 LEAVES AWARD FOR ENVIRONMENT AND ENERGY PERFORMANCE

**2013** International Safety Award with merit 2014 by British Safety Council, UK.  
World CSR Congress Award 2013  
Greentech CSR Award 2013

**2012** Golden Peacock National CSR Award 2012

Ranked No.1 as Wealth Creator in India over a 10- year period (Business World)  
Awarded the Dun & Bradstreet- Rolta Corporate Awards 2011

**2011** Ranked 3rd in the Metals Category of Business World's India's Most Respected Companies Survey  
Received the Forbes Asia's 'Fabulous 50' International Award  
Golden Peacock Innovation Management Awards  
Greentech Award for 1st Position in Metal & Mining Industries  
World HRD Congress CSR Award on women empowerment

**2010** Rated the World's 2nd Largest Value Creator by Boston Consulting Group (BCG), based on Total Shareholder Return from 2005-2009, and the largest Value Creator in Mining and Materials category

Received the Forbes Asia's 'Fabulous 50' International Award  
Golden Peacock Innovation Management Awards  
CSR Excellence Award 2010 by ASSOCHAM for promoting and propagating Corporate Social Responsibility initiatives  
Received the CNBC's Most Promising Entrant into the Big League at IBLA  
National Energy Conservation Award

**2009** Golden Peacock Innovation Award 2009  
Winner of 'Shrishti Green Cube Award 2009  
SAIL HR Excellence Award 2009







SAFETY INDUCTION



ON-THE-JOB SAFETY TRAINING



SAFETY REVIEWS



SAFETY AUDITS / INSPECTIONS



TOOL BOX MEETINGS



SAFETY AWARDS/REWARDS



MEDICAL EXAMINATIONS/ WORLD CLASS PPEs



MOCK DRILLS



**For any information please contact: -**

Mr. D. Balasubramanyam – Head of Investor Relations

Tel: +91 124 6612 000

Mobile: +91 8130755166

Email: - [d.bala@jindalsteel.com](mailto:d.bala@jindalsteel.com)

Mr. Nishant Baranwal – Investor Relations

Tel : +91 124 6612 000

Mobile:+91 8800690255

Email: - [nishant.baranwal@jindalsteel.com](mailto:nishant.baranwal@jindalsteel.com)

*This presentation may contain certain forward looking statements concerning JSPL's future business prospects and business profitability, which are subject to a number of risks and uncertainties and the actual results could materially differ from those in such forward looking statements.*

*The risks and uncertainties relating to these statements include, but are not limited to, risks and uncertainties regarding fluctuations in earnings, our ability to manage growth, competition (both domestic and international), economic growth in India and the target countries for exports, ability to attract and retain highly skilled professionals, time and cost over runs on contracts, our ability to manage our international operations, government policies and actions with respect to investments, fiscal deficits, regulations, etc., interest and other fiscal costs generally prevailing in the economy. Past performance may not be indicative of future performance. We do not undertake to update our forward-looking statements.*

*This presentation is not intended, and does not, constitute or form part of any offer, invitation or the solicitation of an offer to purchase, otherwise acquire, subscribe for, sell or otherwise dispose of, any securities in JSPL or any of its subsidiary undertakings or any other invitation or inducement to engage in investment activities, neither shall this presentation nor the fact of its distribution form the basis of, or be relied on in connection with, any contract or investment decision. The numbers in this presentation are purely indicative and could change later.*

THANK YOU