

Date: September 30, 2025

To,
The Department of Corporate Services,
BSE Limited,
25th Floor, P.J. Towers,
Dalal Street, Mumbai- 400001

Subject: Submission of Investor Presentation

Ref: Regulation 30 of Securities and Exchange Board of India (Listing Obligations & Disclosure Requirements) Regulations, 2015 ('Listing Regulations')

Scrip Code: 538734

Dear Sir/Madam,

Further to our letter dated September 24, 2025, and pursuant to regulation 30 of SEBI (Listing Obligations and Disclosure Requirements), Regulations, 2015, as amended, please find enclosed herewith Investor Presentation that will be made by the representatives of the Company at the Investor/Analyst meet scheduled today i.e. on Tuesday, September 30, 2025.

This is for your information and records.

Thanking you,

Yours faithfully
For Ceinsys Tech Limited

Pooja Karande
Company Secretary &
Compliance Officer
M. No. A54401

Enclosure: As above



Investor Presentation deck

September 2025

Ceinsys Tech Ltd.

Registered Office:

10/5, IT Park, Opposite VNIT, Nagpur 440022, Maharashtra,
India

CIN: L72300MH1998PLC114790

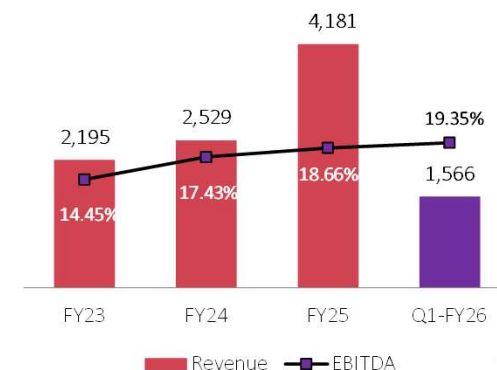
Strictly Private & Confidential

www.cstech.ai

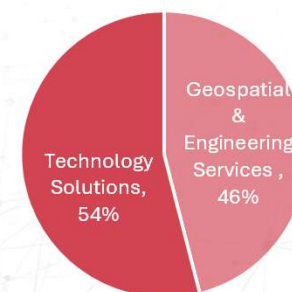
CS TECH Ai Overview

- **27-year legacy of innovation** – incorporated in 1998 and BSE-listed, CMMI-Level 5 firm focused on high-impact technology services.
- **Pure-play focus on Geospatial, Mobility & Emerging Tech** – end-to-end GIS data services, enterprise Web GIS/DSS, and full-vehicle product & industrial automation engineering create a seamless geo-mobility value chain.
- **Strategic expansion** – AllyGrow Technologies (a specialized player in vehicle product-engineering & industrial-automation) was acquired in 2022 to launch the Mobility vertical; the 2024 addition of US-based reality-capture firm VTS brings 3D scanning, digital-twin capability, and a North-American delivery base.
- **Global footprint** – 1,300+ professionals across India, United States, United Kingdom and Germany provide follow-the-sun support and local market proximity.
- **Flagship national programs** – GIS-driven water-infrastructure and equitable-distribution solutions for complex initiatives such as **Jal Jeevan Mission**, backed by proprietary Decision Support Systems.
- **Marquee client roster** – trusted by global utilities, transport authorities, telecom operators, manufacturing OEMs and public agencies for mission-critical projects.
- **Deep, continuing investment in Emerging Tech** – dedicated “Tech-Play” unit advancing AI, ML, IoT, VR/AR, digital twins and embedded electronics for industry-ready platforms.
- **Proven scale & impact** – 15,500 + miles of water network mapped, 650 k miles of hi-res imagery processed, and 5.5 million engineering hours executed for global clients.
- **Comprehensive Manufacturing Solutions** – concept-to-plant services for passenger cars, CVs, off-highway and 2-wheelers accelerate electrification and digital manufacturing programs.
- **Sustainable, future-ready outlook** – Internal investments prioritized for AI-powered automation, smart-city digital twins and next-gen embedded mobility electronics, enabling clients to move up the value chain.

Business Performance *
Operational Revenue (INR Mn) and
EBITDA Margins (%)



FY25 Revenue Break Up (%)



* This business performance will differ from Consolidated Numbers due to intercompany transaction adjustments. JV business performance is not reflected in the company's consolidated numbers

Repeatable, Predictable, Proven. Quarterly Growth driven by Delivery and Demand

Consistent Results in an Inconsistent Market

While most players are struggling with slow procurement cycles, funding winter, and delayed decision-making:

All figures in INR Million



CS TECH Ai has delivered continuous 3 years of positive revenue growth



100+ projects being executed with zero client churn

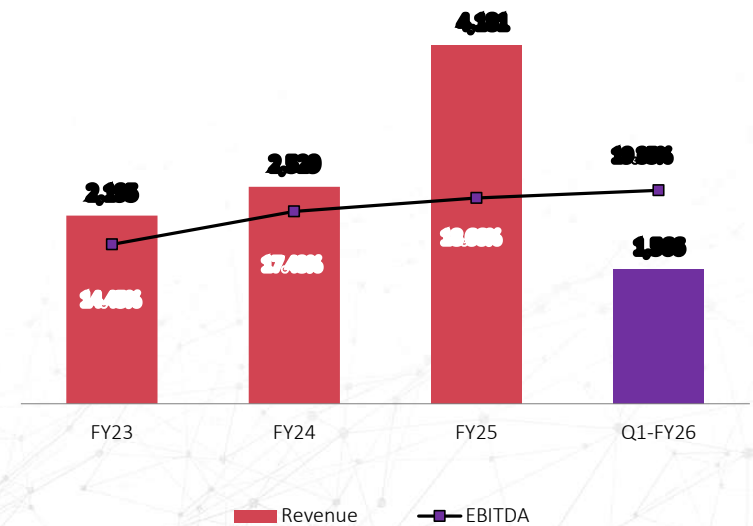


Healthy pipeline across Government, PSU, and Infra Enterprises



Early international traction in MEA despite macro headwinds

Business Performance
Operational Revenue and
EBITDA Margins (%)

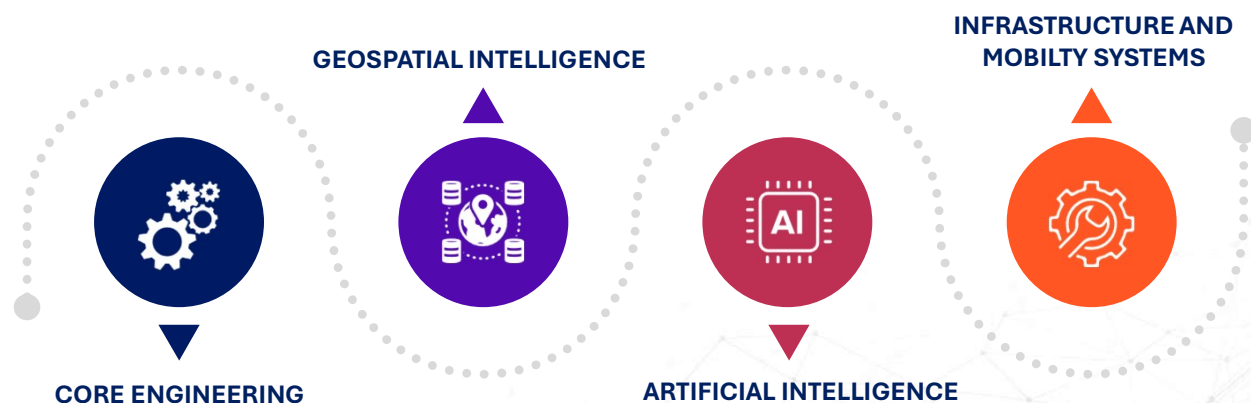


The Current Scenario: The World is Urbanizing, Ageing, and Digitizing Infrastructure must keep up

Today's decisions about cities, utilities, and transport demand real-time, intelligent, and predictive support.

That's where CS TECH Ai comes in - transforming how infrastructure is imagined, built, and maintained.

Unlike any other player, we operate at the intersection of:



CS TECH Ai delivers high-impact solutions for governments, smart cities, utilities, mobility, and industrial assets.

Business credentials & market potential



27 Years +
of Proven Performance



200+ Customers
50% business from
repeat Customers



1,300+
Dedicated and technically
qualified employees



Pure-Play
GIS and TS
Services Company



Global Footprint
Presence across US, UK,
Germany & India



GIS

100K+ Miles
Electrical Network
Processed & analyzed



GIS / ES

35K+ Miles
of Water Network
Designed & Implemented



GIS

650K+ Miles
High Resolution Image Data
for Business Intelligence



GIS

2.2 Mn Sq. Ft.
Infrastructure analyzed



ES

7 Mn + Hours
of Engineering Services
delivered



Order Book
to be executed **INR 12,090 Mn.**
as of 30th June 2025



GIS

Awarded
Prestigious River Linking
Project of **INR 3,810 Mn.**

Finance Budget 2025-26 Announcements for Geospatial Sector-



Jal Jeevan Mission
Extended till 2028 to
achieve 100% coverage



Modernization of land
records, Urban Planning
Design of infrastructure

National Geospatial
mission to be started using
PM Gati Shakti
And many more initiatives
with high funds allocation

GIS : Geospatial Services

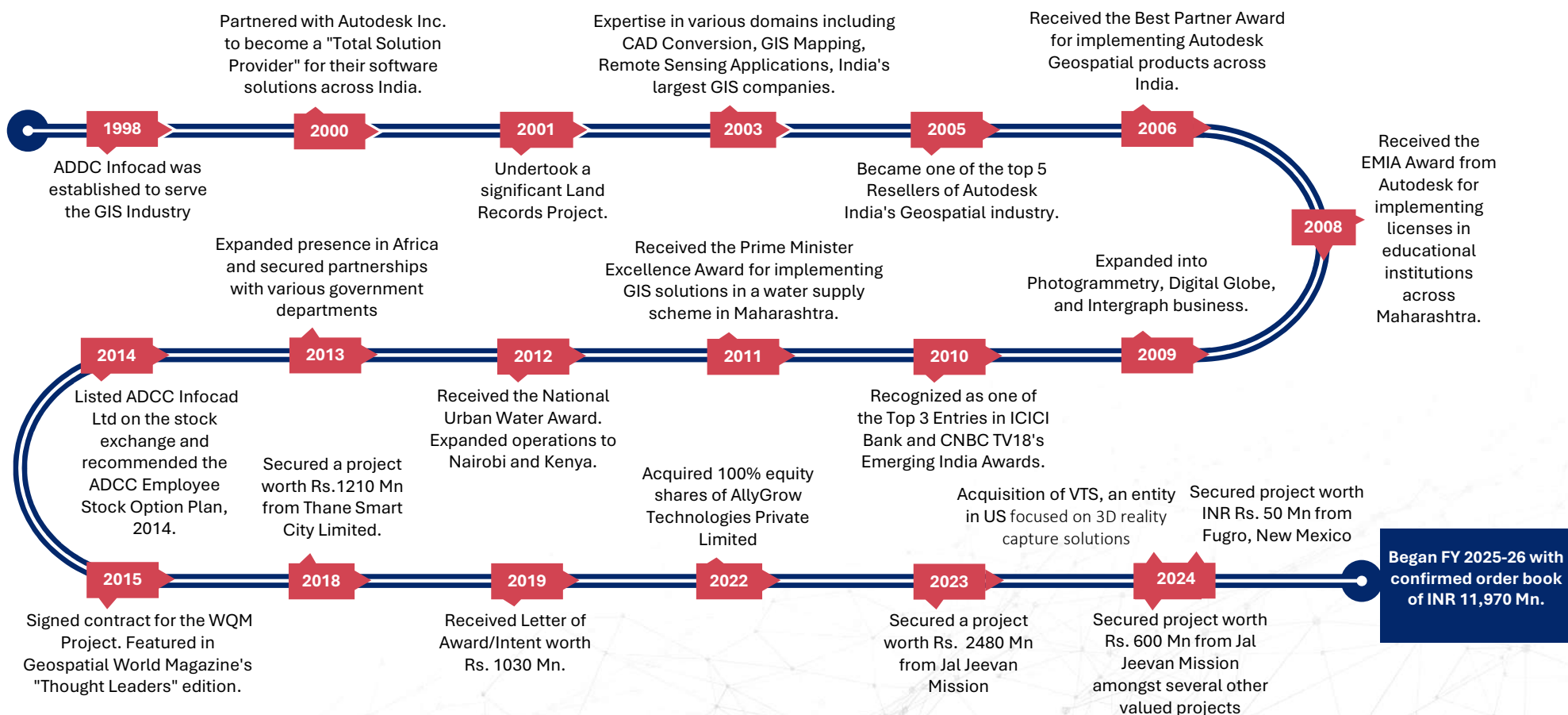
TS : Technology Solutions

ES : Engineering Services

Strictly Private & Confidential



Key Milestones



Board of Directors & Leadership team



Mr. Sagar Meghe- Chairman and Non-Executive Director

Sagar Meghe brings a distinguished legacy of entrepreneurship and institution-building, with deep-rooted experience across education, healthcare, and governance. As Chairman of CS TECH Ai, he plays a key role in shaping the company's strategic direction and institutional alignment. With a long-standing commitment to technology-led development, he champions the company's mission of delivering impactful solutions across geospatial, mobility, and AI-powered infrastructure domains. Sagar is also known for his philanthropic initiatives and belief in enhancing possibilities through inclusive progress, education, and public service.



Mr. Surej KP – Wholetime Director & CEO Designate

Surej KP, a B.Tech (Honors) in Electronics from NIT Calicut and a Harvard-certified Executive Leadership Program graduate, has extensive experience in technology, product engineering, data, and AI. He has held key roles including CEO of Intelliswift (USA), CTO of UST Global (USA), and Vice President at Cognizant (USA), with earlier experience at TCS in India and the USA. Known for his leadership, client management, and strategic expertise, he brings strong integrity and a customer-focused approach to every engagement.



Mr. Kaushik Khona - Managing Director, India Operations

Kaushik Khona brings a broad & accomplished leadership background with over three decades of experience across aviation, pharmaceuticals, agro-processing, textiles, and energy. A Chartered Accountant, Company Secretary, Cost Accountant, & Law graduate, he is known for his strategic foresight, turnaround management capabilities, & disciplined execution. At CS TECH Ai, he leads India operations with a focus on operational efficiency, governance, & business growth. Kaushik previously served as CEO of Go Air & has held senior leadership roles in several flagship companies of the Wadia Group and other industrial conglomerates.



Mr. Prashant Kamat - Vice Chairman and CEO

Prashant Kamat is a proven techno-commercial leader with deep expertise in engineering, manufacturing, & digital transformation. Over a career spanning nearly three decades, he has held leadership roles across global delivery, operations, & business growth. He previously led Mahindra Engineering Services & founded AllyGrow Technologies, a specialized product engineering and manufacturing services firm later acquired by CS TECH Ai. Here, Prashant has been instrumental in expanding the company's presence across geospatial, mobility, & emerging technologies, while aligning execution excellence with long-term strategic priorities.



Dr. Abhay Kimmatkar - Managing Director

Abhay Kimmatkar is a business leader with over two decades of experience in geospatial and infrastructure related technologies. He has played a pivotal role in driving innovation, forging strategic partnerships, and delivering impactful solutions at CS TECH Ai. Abhay has championed the adoption of technologies like GeoBIM, AIoT, and 3D City Mapping, significantly improving operational efficiency. A seasoned technocrat with a PhD in Business and Marketing, he has led initiatives that strengthened the company's position across India's public and private sector ecosystems.

Independent Directors



CA Dhruv Subodh Kaji

C.A. Dhruv Subodh Kaji is a distinguished Chartered Accountant known for his strategic leadership across finance, governance, and business advisory. He has held senior roles including Finance Director at Raymond Ltd. and Executive Director at Pinesworth Holdings. His board affiliations include HDFC Asset Management Co. Ltd., TV18 Broadcast Ltd., CS TECH Ai, and several Welspun entities. With deep expertise in evaluating complex business initiatives, he continues to offer strategic counsel across industries such as media, infrastructure, chemicals, and energy.



Dr. Satish Wate

Dr. Satish Wate is a distinguished environmental expert and policy advisor with over four decades of experience in environmental science, health, and sustainability. A former Director of CSIR-NEERI, he has advised various ministries on public health and environmental strategies. His work spans advanced research in water quality, solid waste management, and environmental biotechnology. He serves on expert committees of the WHO, Ministry of Jal Shakti, and MoEFCC. At CS TECH Ai, he contributes his domain expertise to guide large-scale infrastructure and sustainability-focused initiatives across sectors.



Mr. Kishore P. Dewani

Kishore P. Dewani is a senior Tax Advocate with over four decades of experience in Direct Tax matters along with strong legal & Tax background. He has a Bachelor's Degree in Commerce from Nagpur University. He is a President of the ITAT Bar Association & Treasurer of the Income Tax Bar Association.



Mr. Phaneesh Murthy - Non-Executive Independent Director

Phaneesh Murthy is a global business leader with over three decades of experience in the IT services and consulting industry. He played a pivotal role in transforming Infosys into a global powerhouse and later led iGATE Corporation as CEO, steering its turnaround and growth before its acquisition by Capgemini. At CS TECH Ai, he provides strategic guidance on global expansion, operational scalability, and digital transformation. His expertise lies in driving growth through innovation, client-centric delivery models, and building agile, globally competitive service organizations.



Mrs. Maya Swaminathan Sinha

Maya Swaminathan Sinha is a seasoned civil servant and corporate strategist with extensive experience across trade, infrastructure, and investment promotion. A former Indian Revenue Service officer, she has served with distinction in government roles before transitioning to leadership positions in companies such as IL&FS and the National Investment Promotion and Facilitation Agency (Invest India). At CS TECH Ai, she brings a unique blend of public policy insight and corporate governance acumen, advising on regulatory strategy, ESG frameworks, and sustainable growth initiatives across geographies.

Leadership team



Mr. Vishal Pawar – CMO

Vishal Pawar is the Chief Marketing Officer at CS TECH Ai, with over two decades of global experience in engineering services, branding, and go-to-market strategy. Formerly CEO of AllyGrow Technologies, he has led business growth initiatives, M&A execution, and managed high-performing teams across the automotive and tech sectors. He previously held leadership roles at Tech Mahindra, Mahindra Engineering Services and Mahindra & Mahindra. With a mechanical engineering degree and an MBA in Marketing, he blends technical expertise with strategic marketing to drive sustainable brand and business outcomes.



Mr. Rahul Joharapurkar – COO

Rahul Joharapurkar brings over two decades of experience in geospatial and engineering technology operations. At CS TECH Ai, he oversees India-based delivery, ensuring streamlined execution across Telecom, Utilities, Smart Infrastructure, and AEC sectors. He plays a key role in operationalizing advanced technologies such as LiDAR, BIM, and AI-powered spatial analytics. Known for his execution focus and client-centric mindset, Rahul has been instrumental in scaling teams, improving delivery processes, and ensuring high-impact outcomes across mission-critical projects.



Mr. Prakash Yadav – Senior Vice President (Energy)

Prakash Yadav, Senior Vice President, Energy, is an experienced business and domain expert, specialized in creating business value through technology solutions for Utilities. He comes with more than 22 years of experience in T&D and Power Generation business, and has contributed to the success of business strategies and technology investments. His comprehensive understanding of the operations, regulations, policies, and technologies enables him to deliver enterprise-grade Geospatial and Engineering solutions.



Dr. Manish Ingle – Vice President (Water)

Dr. Manish Ingle has accumulated over 24 years of professional experience. He holds a PhD in Commerce and Management along with a Bachelors degree in Electronics Engineering. He is a member of Institute of Engineers, India (IEI), IMA and IWWA. As a Water Business Unit Head at CS TECH Ai, he plays a significant role in business strategies, conceptualization of new projects on upcoming technologies and team building for water business unit. Throughout his career, he has managed multiple projects, showcasing his capability in handling complex tasks and leading initiatives within the industry.



Mr. Tarun Bisht- Vice President (Product Solutions)

Tarun Bisht has over 10 years of work experience, he has spent more than 5 years at CS TECH Ai as Vice President (Business Development), where he heads the software sales business leading a team of 25 plus- growing to 50 employees. He collaborates closely with various OEMs like Autodesk, Bentley, Siemens, ESRI etc, leveraging his skills to drive growth and innovation. He is passionate about fostering strong business relationships and continuously seeks to expand his knowledge in the industry.



Mr. Vinay Jirgale - CTO (MEG-Nxt)

With 25 years of experience in the Engineering Software domain, he brings a wealth of expertise across various facets of the industry. He has a strong background in digital transformation, business process analysis and re-engineering. He had been instrumental in building new software products for leading product OEMs like Autodesk, Geometric software, PTC, MSC software and Neilsoft. Vinay has extensive knowledge in Digital Thread and Digital Twin technologies, along with CAD/CAM/CAE/BIM/Visualization, GIS/Geospatial, Machine vision, and AR/VR/XR and Industrial Metaverse.



Mr. John Chwalibog– President (Geospatial Americas)

John Chwalibog leads CS TECH Ai's geospatial business across the Americas, bringing over 27 years of experience in geospatial technologies, business development, and strategic growth. He has held leadership roles at Trimble, FARO Technologies, Zeiss, and Matterport, and founded VTS, a startup focused on 3D reality capture solutions. John is known for scaling operations, forging strategic partnerships, and driving innovation in AEC, telecom, and utility sectors. At CS TECH Ai, he oversees market expansion, customer engagement, and execution excellence across the region.



Mr. Ramadasu Venkata Tanguturi – Vice President (Emerging Technologies)

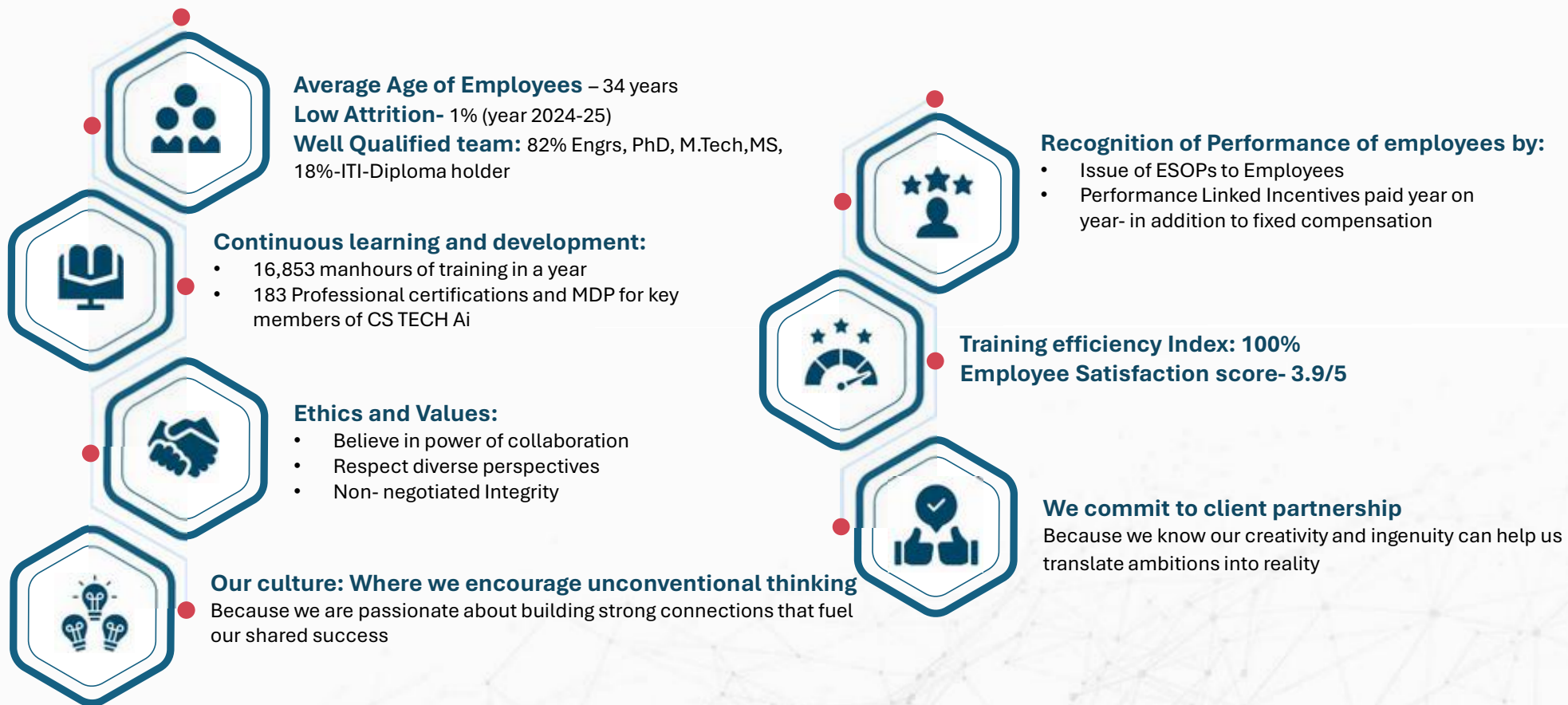
Ramadasu is a post graduate engineer with 30 plus years of immense MNC experience in Automotive, Defense, Aero, Medical and Transportation domains. He has played a pivotal role in setting up Captive R&D centres for various MNCs & provided thought leadership in Infotainment, ADAS systems, Defense, Aero & Medical electronics. Ramadasu specializes in processes aligned with ASPICE, functional safety engineering and Cybersecurity aspects.



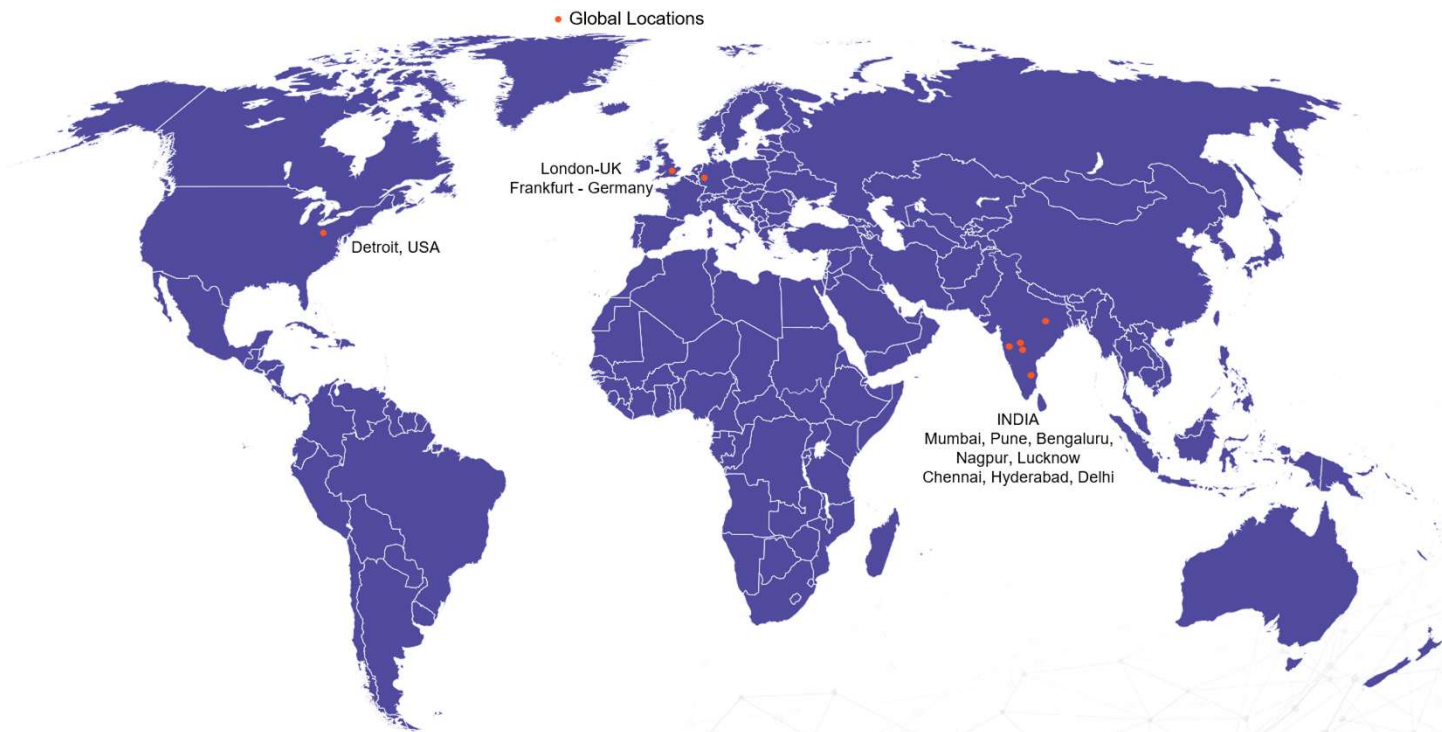
Mr. Anand Paranjape – Vice President (Mobility Operations)

Anand Paranjape leads the Mobility delivery/operations at CS TECH Ai, bringing over 30 years of experience in engineering services, product development, and manufacturing services. He has held leadership roles at Bajaj Auto, Mahindra Engineering, and Tech Mahindra, and was instrumental in the growth of AllyGrow Technologies where he led the presales activities. Anand is known for establishing client-centric delivery models & executing them with operational precision.

Our Human Capital - A Key strength

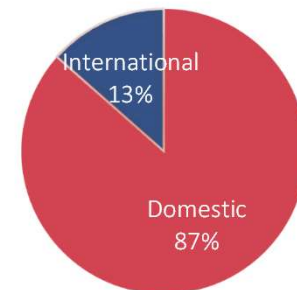


Geographical Presence



REVENUE SPLIT – FY25

GEOSPATIAL & ENGINEERING SERVICES



TECHNOLOGY SOLUTIONS





Sector and Services Overview

www.cstech.ai

Strictly Private & Confidential

Problem & Opportunity



1 Infrastructure planning is outdated, slow, and fragmented

2 GIS systems are passive and underutilized

3 Data sources (satellites, drones, IoT) are under-leveraged

4 Manual decision-making leads to cost, inefficiency, and risk



Opportunity

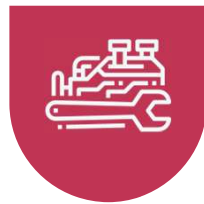
We use **AI + Geospatial Intelligence** to drive smarter and faster decisions at scale

What we do differently

A full-stack geospatial AI platform powering intelligent infrastructure.



Real-time Data
Integration from drones,
satellites, sensors



Actionable insights for
planning, maintenance,
and operations



AI-driven **Digital Twins**
of assets, cities, utilities



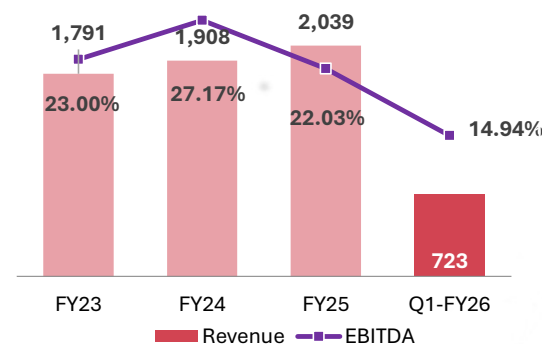
Visual dashboards for
Smart Decisioning

We don't just build tech —we engineer outcomes.

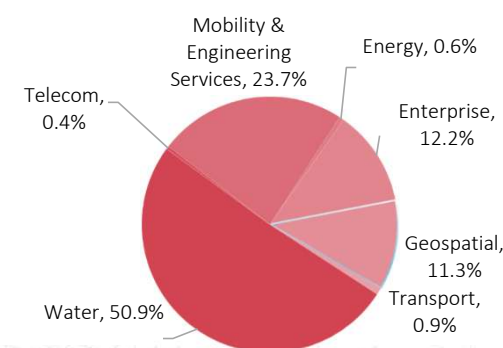
Services Overview: Geospatial, Mobility, Emerging Tech

- Over two decades, CS TECH Ai has helped governments and enterprises worldwide harness spatial intelligence for planning, compliance, and asset management.
- Geographic information and geospatial analytics now underpin how organizations comprehend, monitor, and model real-world change.
- Core industries served on the geospatial side include Water, Energy, Transportation, Oil & Gas, Telecom, and Land & Natural Resources.
- The firm designs and deploys tailored geospatial platforms that turn location data into faster, more informed operational decisions.
- In parallel, its Mobility vertical delivers full-cycle vehicle and manufacturing engineering—concept design, CAE validation, digital factory planning, and robotics—for 2/3-wheelers, passenger cars, CVs, and off-highway equipment.
- The mobility vertical also specializes in automotive seatings & interior development. These services are also offered in a form of Joint Venture – AllyGram (70% owned by CS TECH Ai & 30% by Grammer AG) to Grammer AG.
- Advanced capture technologies such as LiDAR, UAV photogrammetry, laser scanning, and high-density mapping ensure precision inputs for every geospatial engagement.
- Ongoing investment in digital twins, AI/ML, connected-vehicle IoT, and embedded electronics keeps both geospatial and mobility offerings future-ready.

Business Performance
Operational Revenue (INR Mn) And EBITDA Margin (%)



FY25 Geospatial & Engineering Services Segmental Mix



Geospatial : Industries covered



Water

- Non-Revenue Water Management
- IoT Solutions for Water Supply Management
- Water Infrastructure Management
- Project Management Consultancy
- Detailed Design & Consultancy



Energy

- Powerline Design & Modelling
- Digital Twin
- Grid Automation
- Operational Data Infrastructure
- Vegetation/ROW Management
- Managed Services



AEC & BIM

- Infrastructure Modeling
- BIM
- Infrastructure Management
- Digital Project Management System



Oil & Gas

- GIS & Engineering
- Delivery Route Optimization
- Operational Analytics
- Unified Pipeline data management enterprise solution
- Digital Twin



Transportation

- Asset Monitoring & Management System
- GIS & Engineering
- Detailed Design & Consultancy
- Project Supervision & Audit
- Digital Project Management System
- Digital Navigation



Telecom

- Network & Fibre Planning
- GIS & Engineering
- Digital Twin
- WebGIS Enterprise Solution

Geospatial : Service offerings



Geospatial Services

- Feasibility Modelling
- Predictive Analytics & Risk Estimation
- Change Management
- Impact Analytics



Geospatial Analytics

- Feasibility Modelling
- Predictive Analytics & Risk Estimation
- Change Management
- Impact Analytics



Engineering Support

- As-Built Drawings
- Base Map Creation
- L-Section & Cross Section creation
- Quantity Take Off
- Design & Planning
- 3D Model, Elevation & Sections



Digital Enterprise

- Application Design, Development & Management
- Intelligent Decision Support Systems
- Geoportals & Dashboards
- Cutting Edge Technology Implementations: Big Data, IoT, AI/ML



Consulting Services

- Energy Management Consultancy
- Project Management Consultancy
- BIM Management Consultancy
- Water Management Consultancy

Geospatial: Equipment & Technology Used

Via Tech Lidar Technology

Digital Video Recorder
Asset & Pavement View Cameras



Global Positioning System



Arial LiDAR Mapping



3D Road Geometry Maps



Front Laser Mounting Beam along with Side Projection lasers

- Enables full Traverse Profiles

ViaPPS : POS LV from Applanix



ViaPhoto360 specifications



Geospatial : Featured Offerings for Smart Cities

Smart Connectivity

- Transport
 - Traffic Planning
 - DPR
 - Road Asset Management
 - Digital Twin
- Telecom
 - 5G Network Modeling
 - Integrated 3D Models
 - Digital Twin
 - Utility Dashboards



Urban Planning

- City Development Plan
- BIM
- Digital Twin
- Master Plan



Energy Management

- Network Planning
- 3D Line Maps
- ODI
- IoT
- Street furniture & Vegetation Management



Water Management

- Water Infrastructure Management
- Non-Revenue Water Management
- Water Quality Management
- IoT



E-Governance

- Cadastral Data management-Parcel Modernization
- Fleet Management
- Municipal/City GIS
- Natural Resources Management



Disaster Management

- Emergency Planning
- Emergency Response
- Recovery Support
- Hazard Mitigation Planning



GIS & Engineering Surveys | Data acquisition, Modelling & Simulation | Base Maps | Scan to Model | Image Interpretation and classification

Structural design & Strategic Planning| As-Built Mapping | Corridor Design & Network Modelling & Mapping | Asset Management | Vehicle Tracking System | Decision Support System

Network Modeling| Road Asset Management | Pavement, corridor & Bridge Management | Asset monetization

Comprehensive Development Plan

D/O MS implementation | DR & Roll -up | Operational Data Infrastructure| Grid Automation

Hydraulic Modelling | PMC| Water Audit

Data model & development| E-integration | Change Detection| Enterprise Security| DC-DR|Geoportal

Risk Analytics | Change Management | Impact Analytics

Digital Project Management System | SCADA | IoT Based Command Control Center | Capacity Planning | Facility Management System

Customized web-based Enterprise Solutions

Partners



Platforms



Technology Stack

Mobility : Industries covered



Passenger Vehicles

- Interior Systems
- Complete Seat Systems
- Body Systems
- Exterior Systems



Commercial Vehicles

- Cabin Interiors
- Seat Mechanisms and Structure
- Cabin Systems
- Vehicle Frames



Off-Highway Vehicles

- Agricultural, Construction, Material-handling equipment
- Cabin Interiors Design
- Seating Systems
- BIW Cabin Structures
- Powertrain Mounting Systems



Two/Three Wheelers

- Vehicle Body
- Vehicle Aggregates
- Electrical / Electronic Systems

Mobility : Service offerings



Styling

- Benchmarking
- Style Definitions
- Sketching
- Rendering
- Regulatory Compliance



Concept Development

- Concept Definitions
- Engineering Feasibility
- Surface Development
- Ergonomic Checks
- Fixing Strategy



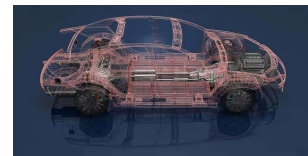
Design & Validation

- Engineering Design
- GD&T Plan
- Virtual Validation
- Engineering Proto Release



Manufacturing Engineering

- Tolerance Analysis
- Pre-Series Manufacturing
- Pre-Production Support
- Plant Layout
- Processing Studies
- Process Validation



PLM





- Strategy
- Implementation
- Integration
- Migration



Industrial Automation

- Assembly Line Design
- Detailing
- BOM
- Build Support

Mobility : Featured Offerings – End to End Product Development Solutions

<p>Vehicle Interiors</p> <p>Seating Systems</p> <p>Body in White</p> <p>Vehicle Exteriors</p> <p>EES Systems</p> 	<p>Cabin Interiors</p> <p>Cabin Exteriors</p> <p>Vehicle Frame and Components</p> <p>EES Systems</p> 	<p>Cab and Operator Environment</p> <p>Structures & Attachments</p> <p>Hydraulic & Pneumatics</p> <p>EES Systems</p> 	<p>Interior Systems</p> <p>Auxiliary Units</p> <p>Floor Systems</p> <p>Accessories</p> 	<p>Vehicle Frame</p> <p>Vehicle Aggregates</p> <p>EES Systems</p> 	<p>Seating Systems</p> 
--	--	--	--	---	--

Benchmarking, Style Definitions, Sketching, Rendering, Document Regulatory Requirements

Concept Definitions, Engineering Feasibility Checks, A Surface Development, Ergonomic Checks

A Surface Check, Packaging Studies, DMU, Master and feasibility section creation, RPS Check, Fit Function Requirement Check

Engineering Design (DFM, DFA, DFS checks), GD&T Plan , Virtual Validation, Engineering Proto Release

Design Modifications, CAD Modelling, Re-Validation, Tooling Release

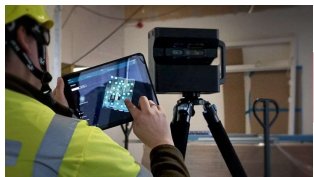
Pre-Series Manufacturing, Pre-Production Support

Plant Layout, Processing and Cycle Time Studies, Process Validation

Assembly Line Design and Simulation, Detailing, BoM, Build and Installation Support

Emerging Tech : Featured Offering: AI/ML based platform*

The Process



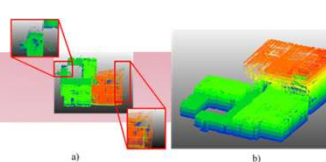
Point Cloud Upload

Upload and manage scan data



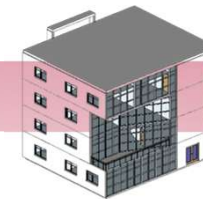
Validation

Ensure accuracy and quality



Automated Processing

Clean and prepare point clouds



BIM Generation

Convert to 3D building models



Deliverables

Digital Twin

Targeted Industry Segments



GIS- Road, Telecom



ACE/BIM



AEC-MEP



Medical



Gaming



Other Industrial

*Note – All Images are representative * Platform Under Development



Technology Solutions

www.cstech.ai

Strictly Private & Confidential

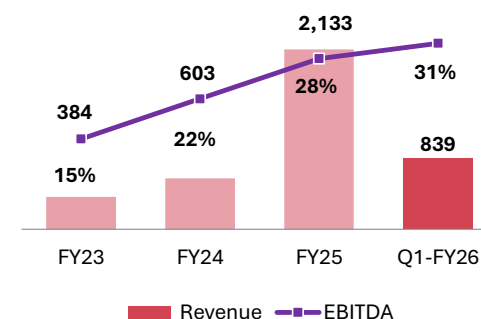
Technology Solutions Overview

Technology Solutions include IoT, Products and Platform Services, Manufacturing solutions and DATA

CS TECH Ai has developed and adapted to various tech solutions including IoT that merges live sensor feeds with project data for a 360° view of operations, risk, and progress. The company also provides various tech solutions on the Tech platforms of Autodesk, Bentley, Esri, Aveva and others. It has also tied up with various technology partners for providing manufacturing solutions and Data driven BI dashboarding and data mining and processing capabilities.

- **Smart-utility IoT suite** monitors water, powerlines, pipelines, and city assets in real time—leak detection, asset-health, and predictive maintenance—via edge sensors, SCADA links, and cloud dashboards.
- **Open, device-agnostic architecture** blends legacy SCADA with new LPWAN/LoRa nodes, streaming into WebGIS analytics for planners, operators, and mobile field crews.
- **Proven scale:** national NRW programs, and state-wide water networks already run on our IoT platform, reducing losses and boosting uptime.
- **Integrated Command Control Centre (ICCC)** – role-based dashboards, mobile alerts and real-time KPIs enable rapid decisions during routine ops or emergency events.
- **Digital Project Management System (DPMS)** creates a Common Data Environment that fuses 3D/4D/5D models, schedule, and cost—driving transparency on megaprojects
- **Core DPMS modules** – analytical dashboards, resource & asset management, PMIS, and LiDAR-based corridor mapping – shorten decision cycles and cut rework across infrastructure and transport builds.
- **Continuous R&D in AI/ML & digital twins** along with immersive 4D/5D visualization keeps platforms evolving and tightly integrated for end-to-end lifecycle insight.

Business Performance
(Technology Solutions)
Operational Revenue (INR Mn) and EBITDA Margins (%)



Tech stack

IOT/IIOT implementation

Technology Partner



Endress+Hauser

Product & Platform Solutions



Data Engineering





Strategic Overview

Go To Market Approach



Market Penetration Plans ▼

- INDIA:
 - Expand Govt Empanelment's
 - Infra & Mobility sector partnerships
- INTERNATIONAL:
 - Strategic alliances in MEA, ASEAN
 - GIS consulting firms as channel partners



Leverage specific Government Initiatives: ▼

- Jal Jeevan Mission receives continued government funding and has been extended till 2028 to achieve 100% rural water coverage.
- National Geospatial Mission to build core geospatial infrastructure and datasets.
- Government push to modernize land records, urban planning, and infrastructure design.
- India targets 340 GW of renewable capacity by 2030, driving demand in water and clean energy sectors.



Key Acquisitions to support future growth:

- AllyGrow's acquisition enabled entry into mobility services, leveraging GIS and autonomous driving convergence.
- VTS acquisition established our presence in the US geospatial telecom sector.
- Additional acquisitions planned across Geospatial, Mobility, and Tech domains.
- Investing in emerging tech—AI solutions and embedded electronics—to fuel future growth.



Financial Overview

Historical Consolidated Financial Performance

PARTICULARS (INR Mn)	FY22	FY23	FY24	FY25
Operational Revenue	2,029	2,195	2,529	4,181
Total Expenses	1,807	1,878	2,089	3,401
EBITDA	222	317	441	780
EBITDA Margins (%)	10.94%	14.45%	17.43%	18.66%
Other Income	17	24	36	117
Depreciation	30	45	52	82
Finance Cost	92	84	47	25
Profit Before Share of Profit of joint Venture & Tax	116	212	378	789
Share in Profit of joint Venture	19	77	118	106
PBT	135	289	497	895
Tax	40	(20)	147	263
PAT	95	309	350	632
PAT Margins (%)	4.69%	14.07%	13.84%	15.13%
Other Comprehensive Income	(3)	19	3	4
Total Comprehensive Income	92	328	353	636
Diluted EPS (INR)	8.12	20.02	22.52	35.27

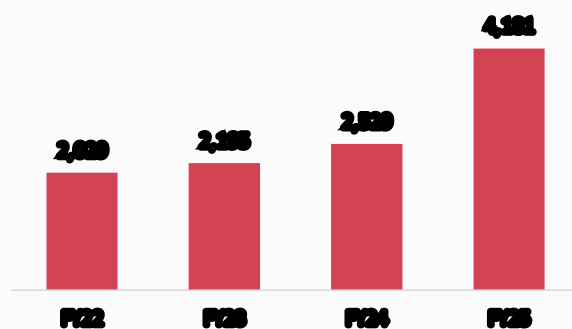
Historical Consolidated Balance Sheet

PARTICULARS (INR Mn)	FY22	FY23	FY24	FY25
Assets				
(1) Non-current Assets				
(A) Property, Plant And Equipment	240	199	238	447
(B) Capital Work-in-Progress	-	-	-	8
(C) Investment Property	-	-	-	8
(D) Goodwill	200	200	200	262
(E) Other Intangible Assets	9	2	1	83
(F) Other Intangible Under Development	-	-	-	21
(G) Financial Assets				
Investments	186	264	267	220
(ii) Trade Receivables	21	21	31	25
(iii) Other Financial Assets	52	35	22	78
(H) Non-Current Tax Assets (Net)	33	63	85	-
(I) Deferred Tax Assets (Net)	28	87	107	155
(J) Other Non-current Assets	19	21	19	13
Total Non-current Assets	788	892	970	1,320
(2) Current Assets				
(A) Inventories	10	44	6	5
(B) Financial Assets				
(i) Investments	-	-	170	-
(ii) Trade Receivables	1,814	1,595	1,666	2,533
(ii) Cash And Cash Equivalents	140	324	111	125
(iii) Bank Balances Other Than (ii) above	127	106	180	1499
(iv) Loans	-	-	-	-
(v) Other Financial Assets	24	25	33	55
(C) Current Tax Assets (Net)	25	48	57	76
(D) Other Current Assets	59	65	65	164
Total Current Assets	2,200	2,206	2,289	4,457
Assets held for sale	-	31	2	-
Total Assets (1+2)	2,987	3,129	3,261	5,777

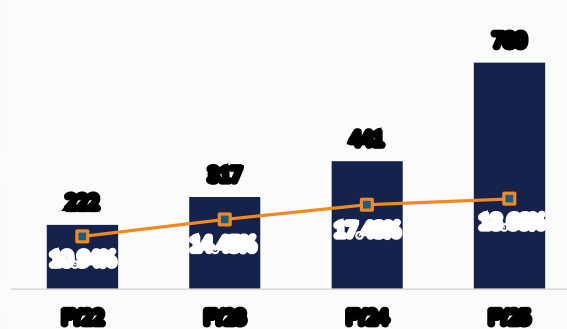
PARTICULARS (INR Mn)	FY22	FY23	FY24	FY25
Equity And Liabilities				
(1) Equity	1,708	1,983	2,341	4,119
(A) Equity Share Capital	154	154	163	174
(B) Other Equity	1,474	1,829	2,178	3,945
(C) Non-Controlling Interest	80	-	-	-
(2) Non-current Liabilities				
(A) Financial Liabilities				
(i) Borrowings	4	9	8	8
(ii) Lease Liabilities	14	14	24	55
(B) Provisions	-	1	10	13
Total Non-current Liabilities	18	24	42	76
(3) Current Liabilities				
(A) Financial Liabilities				
(i) Borrowings	600	538	39	399
(ii) Lease Liabilities	10	8	20	30
(iii) Trade Payables	463	332	505	747
(iv) Other Financial Liabilities	66	72	116	160
(B) Provisions	23	33	29	44
(C) Current Tax Liabilities (Net)	-	3	2	158
(D) Other Current Liabilities	98	136	167	45
Total Current Liabilities	1,261	1,122	878	1,582
Total Equity And Liabilities (1+2+3)	2,987	3,129	3,261	5,777

Consolidated Financial Performance

REVENUES (INR Mn)



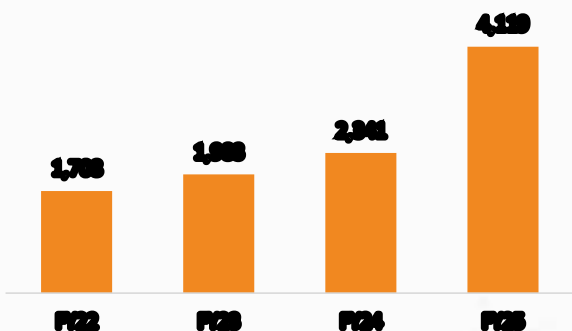
EBITDA (INR Mn) & EBITDA MARGINS (%)



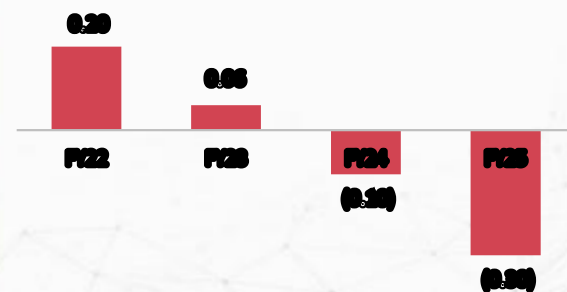
PAT (INR Mn) & PAT MARGINS (%)



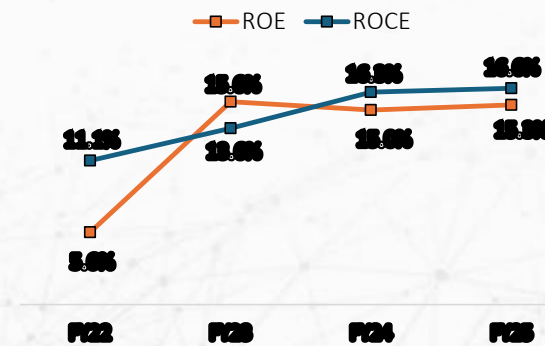
NETWORTH (INR Mn)



Net Debt to Equity

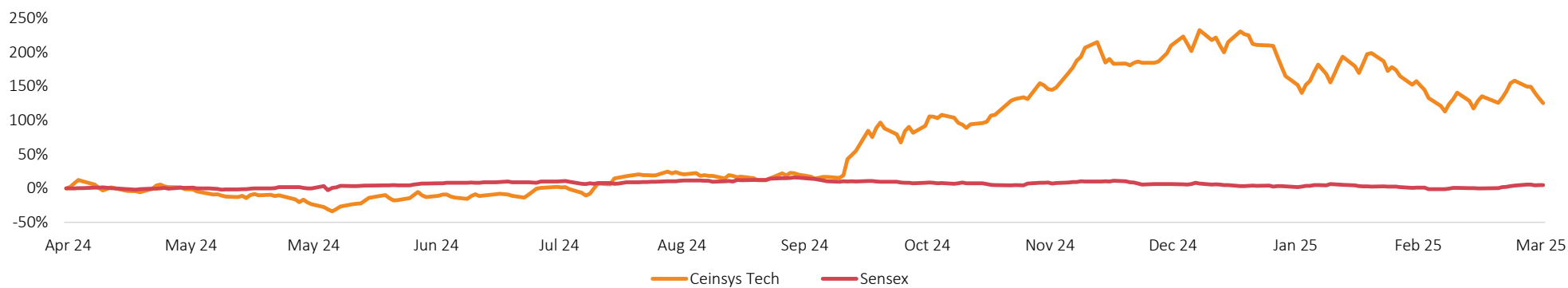


ROCE & ROE (%)



Capital Market Information

1 Year Stock Performance up to 31st March 2025

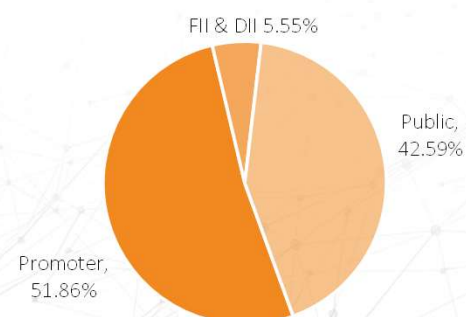


PRICE DATA (AS ON 31st March, 2025)

INR

Face Value	10.0
CMP	1,362.35
52 Week H/L	2,105.0/396.5
Market Cap (INR Mn)	23,760.95
Shares O/S (Mn)	17.4
Avg. Vol. ('000)	58.5
Number of Shareholders other than Promoter	23,771 Approx

Shareholding Pattern (As on 31st March, 2025)



Disclaimer

~~Ceinsys Tech Limited~~

No representation or warranty, express or implied, is made as to, and no reliance should be placed on, the fairness, accuracy, completeness or correctness of the information or opinions contained in this presentation. Such information and opinions are in all events not current after the date of this presentation. Certain statements made in this presentation may not be based on historical information or facts and may be "forward looking statements" based on the currently held beliefs and assumptions of the management Ceinsys Tech Limited ("Company "), which are expressed in good faith and in their opinion reasonable, including those relating to the Company 's general business plans and strategy, its future financial condition and growth prospects and future developments in its industry and its competitive and regulatory environment.

Forward-looking statements involve known and unknown risks, uncertainties and other factors, which may cause the actual results, financial condition, performance or achievements of the Company or industry results to differ materially from the results, financial condition, performance or achievements expressed or implied by such forward-looking statements, including future changes or developments in the Company 's business, its competitive environment and political, economic, legal and social conditions. Further, past performance is not necessarily indicative of future results. Given these risks, uncertainties and other factors, viewers of this presentation are cautioned not to place undue reliance on these forward-looking statements. The Company disclaims any obligation to update these forward-looking statements to reflect future events or developments.

This presentation is for general information purposes only, without regard to any specific objectives, financial situations or informational needs of any particular person. This presentation does not constitute an offer or invitation to purchase or subscribe for any securities in any jurisdiction, including the United States. No part of it should form the basis of or be relied upon in connection with any investment decision or any contract or commitment to purchase or subscribe for any securities. None of our securities may be offered or sold in the United States, without registration under the U.S. Securities Act of 1933, as amended, or pursuant to an exemption from registration there from.

This presentation is confidential and may not be copied or disseminated, in whole or in part, and in any manner.

~~Valorem Advisors Disclaimer~~

Valorem Advisors is an Independent Investor Relations Management Service company. This Presentation has been prepared by Valorem Advisors based on information and data which the Company considers reliable, but Valorem Advisors and the Company makes no representation or warranty, express or implied, whatsoever, and no reliance shall be placed on, the truth, accuracy, completeness, fairness and reasonableness of the contents of this Presentation. This Presentation may not be all inclusive and may not contain all of the information that you may consider material. Any liability in respect of the contents of, or any omission from, this Presentation is expressly excluded.

~~Valorem Advisors also hereby certifies that the directors or employees of Valorem Advisors do not own any stock in personal or company capacity of the Company under review.~~

For further details please contact our Investor Relations Representative:

VALOREM ADVISORS

Mr. Anuj Sengal

Tel: +91-22-49039500

Email: ceinsys@valoremadvisors.com

Investor Kit Link: <https://valoremadvisors.com/ceinsys>



Thank You

Global

USA, UK, Germany

India

Mumbai, Pune, Nagpur, Hyderabad,
Bengaluru, Lucknow, Delhi, Chennai



www.cstech.ai