

SEIL/Sec./SE/2025-26/33**August 7, 2025**

The Manager
Listing Department
National Stock Exchange of India Ltd
Exchange Plaza, Bandra Kurla Complex
Bandra (East), MUMBAI 400 051
Fax # 022-2659 8237/8238/8347/8348
Symbol: SCHNEIDER

The Secretary
BSE Limited
Phiroze Jeejeebhoy Towers,
Dalal Street
MUMBAI 400 001
Fax # 022-2272 3121/2037/2039
Scrip Code No. 534139

Sub: Investor Presentation on Unaudited Financial Results for 1st quarter ended June 30, 2025

Dear Sir(s)/ Madam,

In continuation of our letter no. **SEIL/Sec./SE/2025-26/29** dated **August 1, 2025**, regarding schedule of investor conference call, please find enclosed herewith the investor call presentation on the Company's Unaudited Financial Results for the 1st quarter ended June 30, 2025, approved by the Board of Directors in their meeting held on August 7, 2025.

This presentation will be made available on the Company's website i.e. <https://infra-in.se.com/en/investor/annual-reports-financials.jsp>.

We request you to kindly take the above on record.

Thanking you.

Yours Sincerely,

For **Schneider Electric Infrastructure Limited**

(Sumit Goel)
Company Secretary & Compliance Officer

Schneider Electric Infrastructure Limited

Corp. Office: 9th Floor, DLF Building No.10.Tower C, DLF Cyber City, Phase II, Gurgaon – 122002, India; Tel: +91 124 7152300; Fax.: +91 (0) 124-422 2036; www.schneider-infra.in

Regd. Office: Milestone-87, Vadodara - Halol Highway, Village Kotambi, Post Office Jarod Vadodara -391510, Gujarat; Tel: +91 02668 664300 Fax: +91 664621; CIN: L31900GJ2011PLC064420

Schneider Electric Infrastructure Limited

Q1, FY26

7th August, 2025

Life Is On



Vision

“SEIL will lead the *new digitized energy world*, offering our Customers and Partners, *innovative connected products & solutions*, ready for the then power distribution’s *elevated expectations*.

Our *balanced business models, superior quality & efficient supply chain* will keep our growth and profitability resilient and sustainable.”

Mission

Our mission is to be *a digital partner for sustainability and efficiency*.
We believe that *Life is On* everywhere, for everyone and at every moment.

Life Is On

Schneider
Electric

Market Outlook

Market Dynamics | Shaping the Future

Mega Trends

Green Energy

AI & Digitalization

Mobility

BESS



GROWTH DRIVERS



RE¹ accounted for **78.9%** of all capacity additions in Q1 FY25



RE accounts for **50.08%** of total installed electricity capacity



Installed DC³ capacity stood at **1,263 MW** | ~3.6x since 2020



Digital Economy contributed **13.4%** to the national income in FY25



EVPCS⁵ grew to **26,367** in FY25
CAGR of **72%** (FY22-FY25)



Passenger traffic at Indian airports increased by **6.6%** in Q1 FY26



500 GW Renewable Energy Capacity Goal



Intermittent nature of RE posing challenges to leading to rise in ESS⁷



FUTURE



India's hydrogen demand to reach **8.8 MTPA²** by 2032



DC Capacity expected to reach **3-4 GW** by 2030



~**1.3 million** EVPCS will be required in India by 2030



India's BESS⁸ capacity to increase to **236 GWh** by 2032



GOI POLICIES

- **Expected ₹14,147 Cr Solar Transmission Scheme** to integrate 9 GW solar power to National Grid
- **100GW of nuclear energy by 2047** | 20,000 Cr for Nuclear Energy Mission
- **National Green Hydrogen Mission** | 19,744 Cr for 5 MMTPA production

- **India AI Mission** | 10,000+ Cr outlay for building indigenous AI infrastructure
- **RDSS Scheme** | 3 Lac+ Cr outlay to improve quality of power
- **76,000 Cr PLI⁴ Scheme** for Semiconductors

- **UDAN⁶**: Regional connectivity to 120 new destinations & carry 4Cr passengers
- **PM E-Drive Scheme** | 10,900 Cr Outlay – Demand Incentives & Charging Infra
- **National Rail Plan** | blueprint to make Indian Railways "future-ready" by 2030

- **VGF⁹ Scheme** | 5,400 Cr outlay approved for 30 GWh of standalone
- **PLI ACC¹⁰ Scheme** | 18,100 Cr Outlay – manufacturing capacity of 50 GWh for ACCs
- **Waiver of ISTS¹¹ Charges** for BESS for up to 12 years

SE Actions



Regulatory engagements
CEA, IESA, IEEMA



Product Launches
Tailored innovation for emerging markets



Customer Engagements
Partnering with emerging players



Aligning Talent
around key strategic segments

Our Wins

Core Wins | Key Success across Segments

Mobility

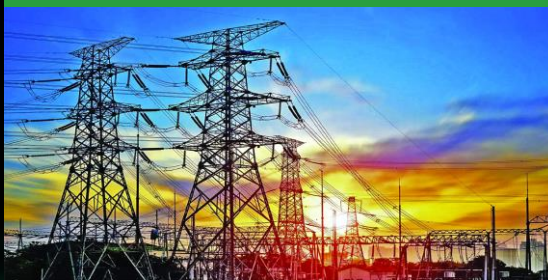


33kV GIS Panels ,25kV GIS panels with CRP¹
SAS²,RTU³,SCADA

Energizing Metro Rail Transit in Western India

- Largest order for 33kV GIS in transportation in India

Power & Grid



40 MVA Power Transformers

Lighting up One of the leading Discoms in Western India

- Customer trust enabling wins and paving way for future opportunities

Water



Oil Distribution Transformers
Medium Power Transformers

Powering Hydro-Electric plant in Central India

- Continuous Customer Engagement leading to recurring business

Bundled Wins | Solutions for Success

MMM



6.6kV AIS panels with RIRO¹ SAS²

Energizing prominent Steel manufacturer in India

- Consistent wins building a strong foothold for future opportunities

Data Center



11kV AIS panels
11kV RMU with EcoCare

Transforming Reliability at Scale for India's Premier Data Center

- Proven Techno Commercial expertise enabled us to secure phase 2 order

Power & Grid



E-House - 33KV GIS, 11KV AIS Motorized RIRO¹, RTU³ & SCADA

Electrifying One of the largest Utilities in Northern India

- Credible Installed base which gives us a competitive edge

Sustainable Wins | Technology for Tomorrow

Solar Energy



8.8 MVA Inverter Duty Transformers

Enabling a Solar energy pioneer to shape a Cleaner future

- Strong reference creation for upcoming projects from this customer

Solar & Wind Energy



Transformers with Ecostruxure transformer expert ,H₂ Sensor and EcoCare Advanced subscription

Driving Digital transformation in Renewable Energy

- EcoCare accelerating conversions by unlocking top opportunities across key segments

Power & Distribution



Smart RM AirSeT with T-300
11kV RMU

Partnering with leading DISCOMs to reduce carbon footprint

- First reference of Smart RM AirSeT Order with FRTU (T-300) in India

Offer Update : 33kV , 3150A Air-Insulated Switchgear (AIS)

Now upto
3150A



Value proposition

Product designed for Medium Voltage applications up to 36kV and for higher rating 3150A, featuring **withdrawable** vacuum breakers, **robust** Internal arc protection, forced air cooling, and **Smart** monitoring



Key Benefits

Safety

Internal Arc tested: **AFLR¹ 31.5 kA / 1s**
High degree of operator safety

Efficiency

CB²roll on floor design, compact
Digitally connected

Simplicity

Easy access, Closed door operation
QR³ code access

Reliability

Longer lifetime



End Market



Renewables



Mining, minerals & metals



Financial Performance

Strong Momentum in Orders

910 Cr
+42.1%
Orders

622 Cr
+4.8%
Sales

241 Cr
-1.5 pts
GM

67 Cr
-2.5 pts
EBIT

41 Cr
-1.5 pts
PAT

1635 Cr
+25.9%
Backlog

Strong Order Growth
Good traction in orders

Steady Sales growth
Moderate growth on
account of spillovers and
project delays

Future Readiness
Capacity expansion initiatives
on track

Strategic Levers

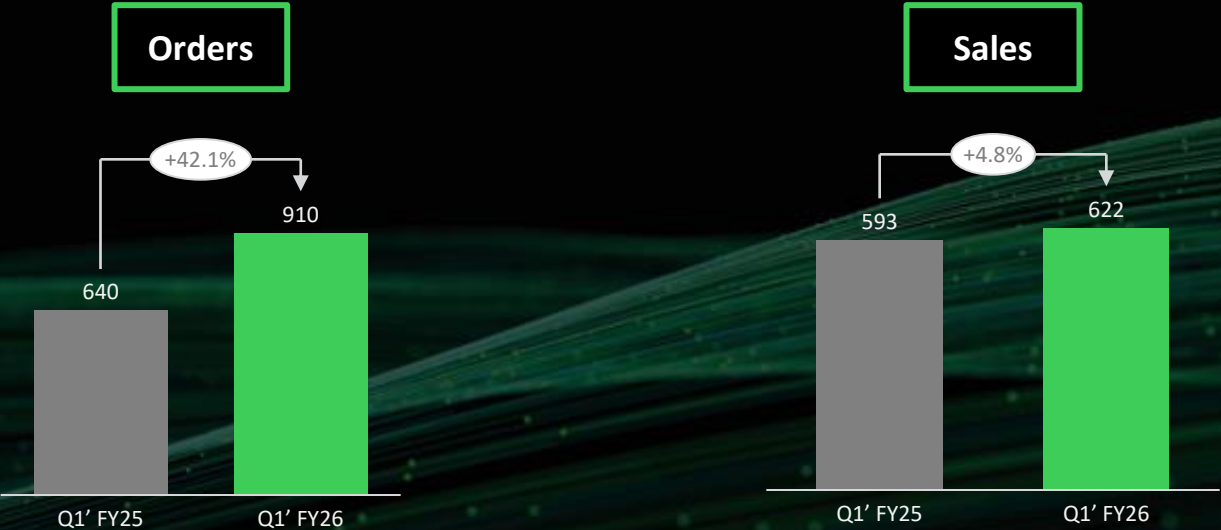
Accelerate Segments
Leverage emerging segments
& Strengthen resilient segments

More Services
Focus on Modernization, Digital
services & Remote asset monitoring

Promote Partners
Distributors & Panel Builders

Good Traction in orders with Better Order Mix

Figures in INR Cr.



Order Backlog on 30th June'25 at INR 1,635 Crores (+25.9% YoY)

P&L Statement – Q1'FY26

Figures in INR Cr.

Particular	Q1 FY26		Q1 FY25		YoY (%)	Margin Change
	INR Cr.	%	INR Cr.	%		
Sales	622		593		4.8%	
Other Income	4	0.7%	3	0.4%	65.6%	
Total Sales	626		596		5.1%	
Material Costs	385	61.9%	357	60.1%	7.9%	
Gross/ Material Margin	241	38.8%	239	40.3%	0.9%	-1.5pts
Employee Costs	87	13.9%	78	13.1%	11.8%	
Other Expenses	81	13.0%	77	13.0%	4.9%	
EBITDA	74	11.8%	84	14.2%	-12.7%	-2.4pts
Depreciation	7	1.1%	6	1.0%	18.6%	
EBIT	67	10.7%	78	13.2%	-15.0%	-2.5pts
Finance Cost	11	1.7%	13	2.2%	-18.0%	
Profit before Exceptional Items	56	9.0%	65	11.0%	-14.4%	-2.0pts
Exceptional Items	-	0.0%	-	0.0%		
Profit Before Tax	56	9.0%	65	11.0%	-14.4%	-2.0pts
Current tax	15	2.5%	18	3.1%		
Deferred tax	-1	-0.1%	-1	-0.2%		
Total Tax Expense	15	2.4%	17	2.8%		
Profit After Tax	41	6.6%	48	8.2%	-14.9%	-1.5pts
Oth. Comprehensive Income/(Loss)	1	0.1%	-0	0.0%		
Total Comprehensive Income	42	6.8%	48	8.1%	-12.8%	-1.4pts

Life Is On

Schneider
Electric